

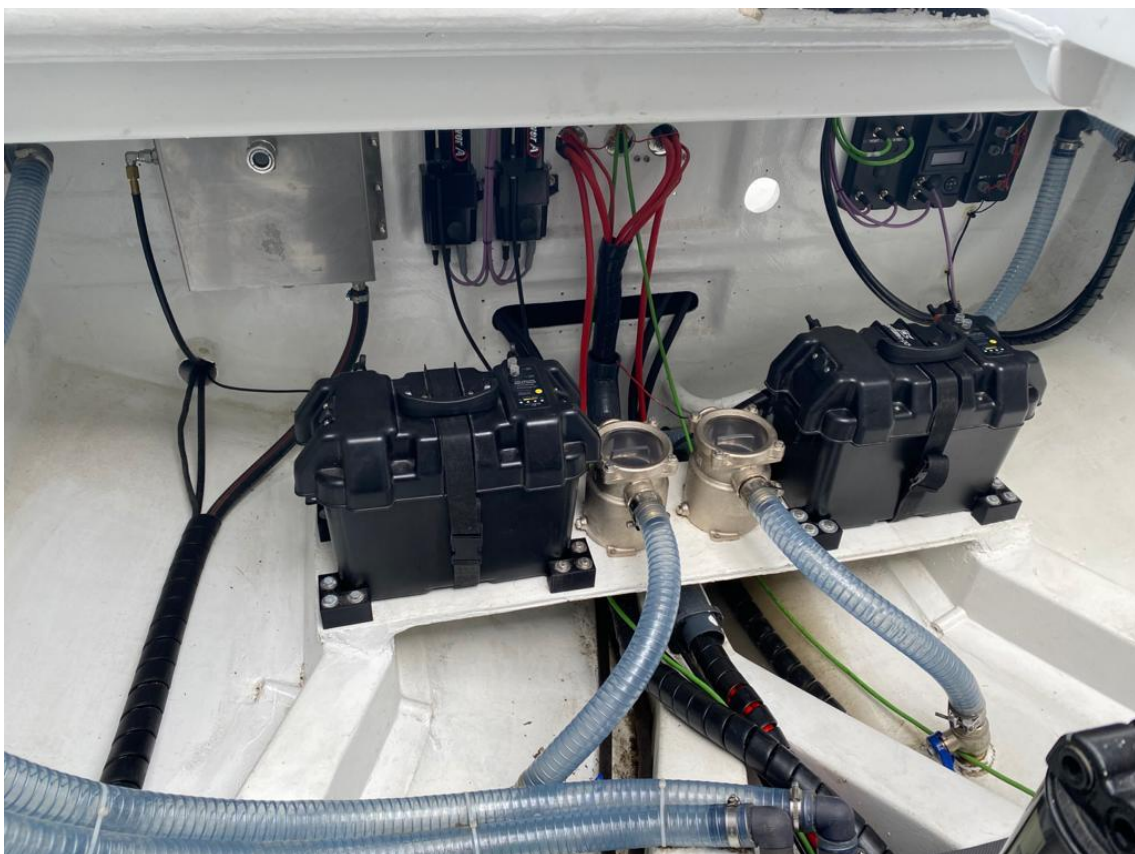
Damen Interceptors are a specialised type of craft, designed for ultra-high-speed interception and insertion missions, while also being capable and effective in a medium-speed patrol and surveillance role.

Type	DAMEN Interceptor 1102
Built	New and never used
Dimensions	10.90 x 2.50 x 1.50 mtrs
Draft	0.70/0.90 mtr
Hull material	E-glass & carbon reinforced epoxy
Main engines	2x 6.6 L. MDS (MarineDiesel) VGT 500 engines
Output	1000 hp total at 3500 rpm
Stern drive	Konrad model 660 (rear mount)
Speed	± 55 knots max.
Passenger capacity	For 4 persons
Crew capacity	For 2 persons
Fuel oil capacity	0.48 m ³
Class	Not classed









MarineDiesel VGT500

373 kW (500 bhp) @3600 rpm

All MarineDiesel VGT Common-Rail engines are based on the 6.6L V8 configuration and are designed to be as compact and light weight as possible while maintaining durability and serviceability. The VGT500 is intended for light, very high speed vessels. Laptop based diagnostics tool is available for all VGT and TSC engines. J1939 and NMEA2000 CAN communication.



General Data

Model	MD-VGT32
Number of cyl	8
Displacement	6.6L
Bore X stroke	103 X 98 mm
Compression ratio	16:18:1
Valves per cyl	4
Firing order	1-2-7-8-4-5-6-3
Combustion system	DI Common rail
Engine type	V8
Aspiration	Variable geometry turbo
Charge air cooling	Air to water
Max crankcase press kPa	0.5

Physical Data

Length, mm	779
Width, mm	825
Height, mm	973
Weight dry, kg	510

Power / Torque Curve

