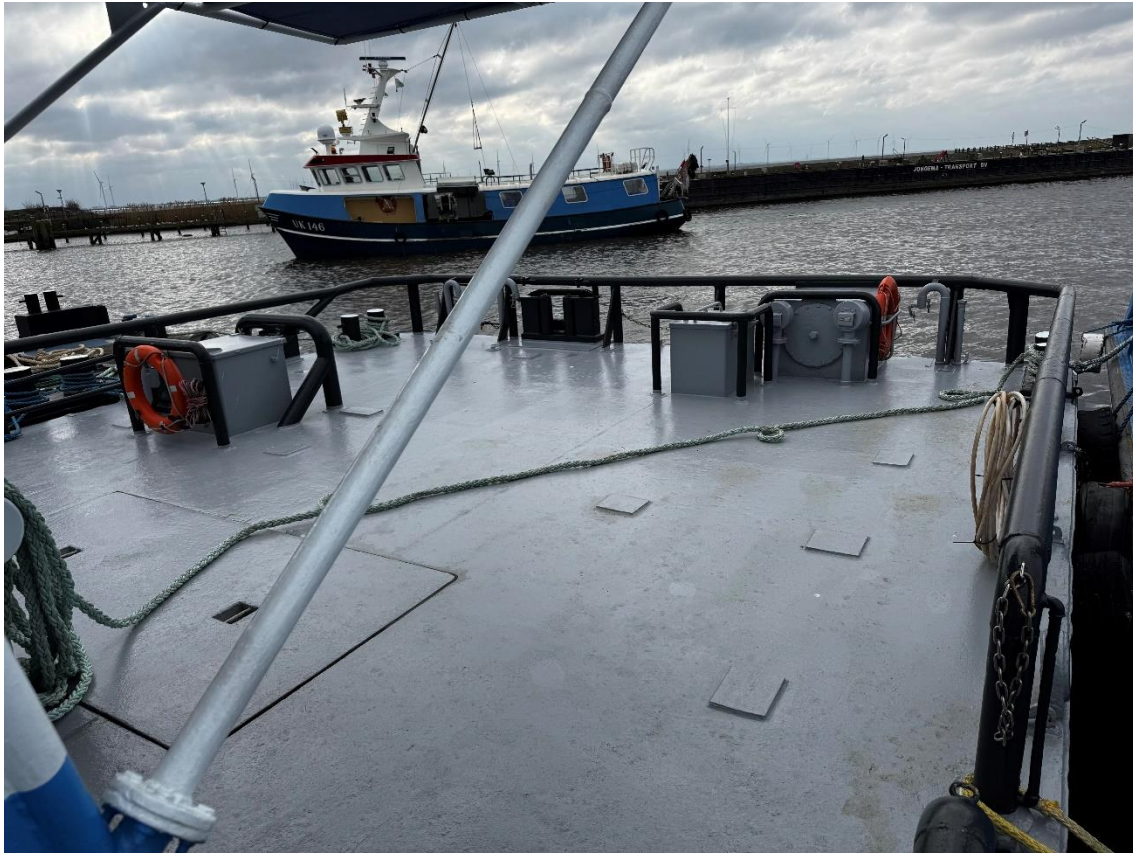


This workboat is suitable for harbour duties and dredging assistance.

Type	Workboat
Built	1985, the Netherlands
Dimensions	18.42 x 8.04 x 2.50 m
Draft	2.00 m
Airdraft	4.80 m
Tonnage	GRT 60 / NRT 18
Propulsion	2x Fixed pitch propellers in nozzles
Main engines	2x Caterpillar, type 3406 DITA (rebuild 2024)
Output	691 hp total
Gearboxes	2x ZF
Speed	± 8.5 knots
Bollard pull	± 9 tons
Leight weight	± 120 tons
Deck equipment	Deck crane Effer 55 TXM 2S Hydraulic deck pins AH winch P=20 tons Towing bitt Bow roller Rubber bow fendering Moonpool
Free deck area	100 m ²
Deck load	139 tons
Main generator	John Deere, 60 kVA
Harbour generator	15 kVA
Tank capacities	Fuel oil 6 m ³ Own consumption Fuel oil 64 m ³ Transfer Fresh water 12 m ³ Transfer
Accommodation	Day accommodation only.
Nav./comm. equipment	GPS, 2x VHF, echosounder, AIS
Class	National Class









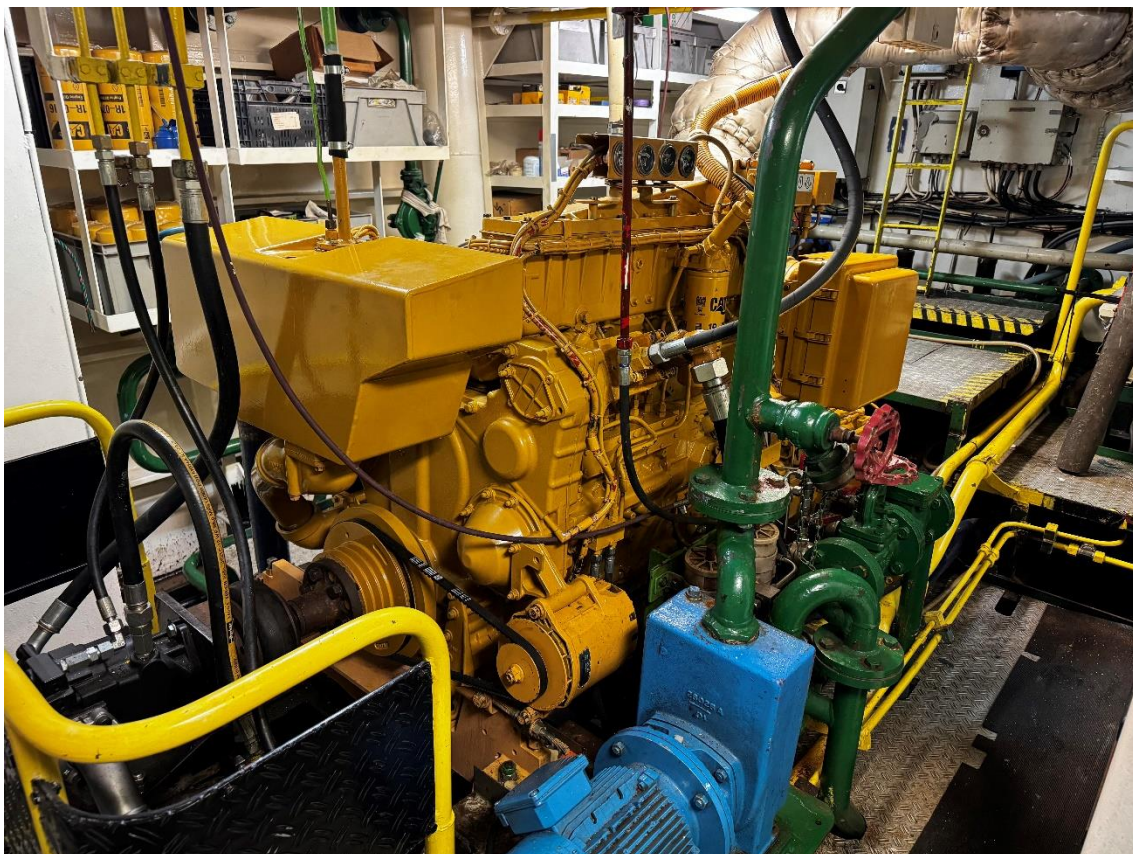




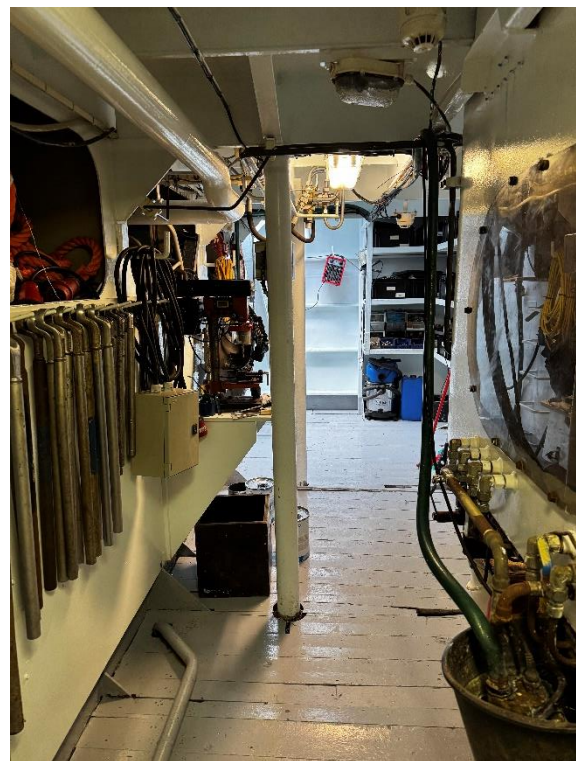






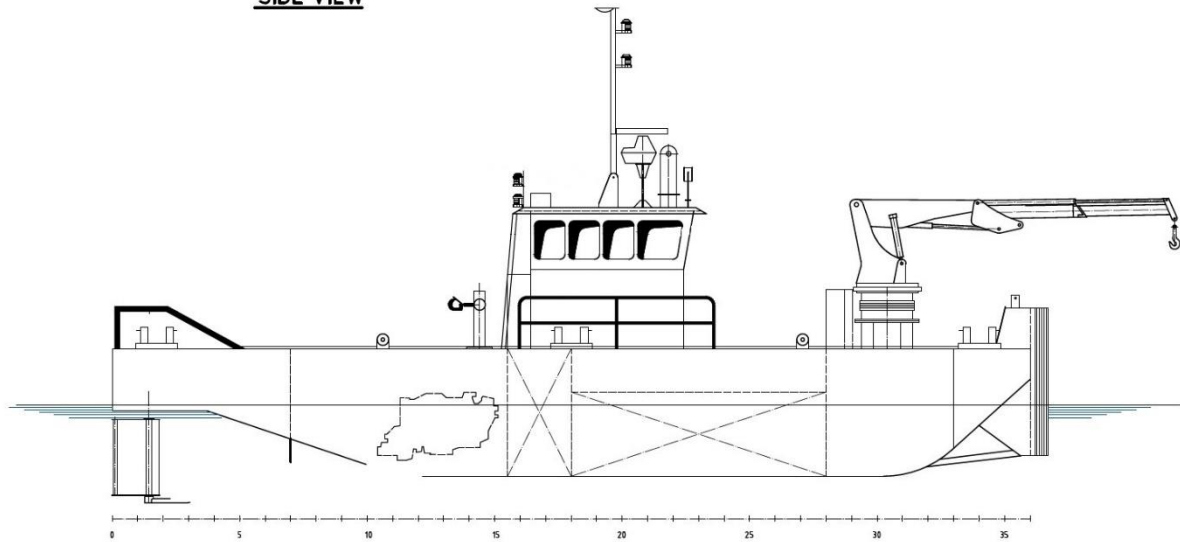
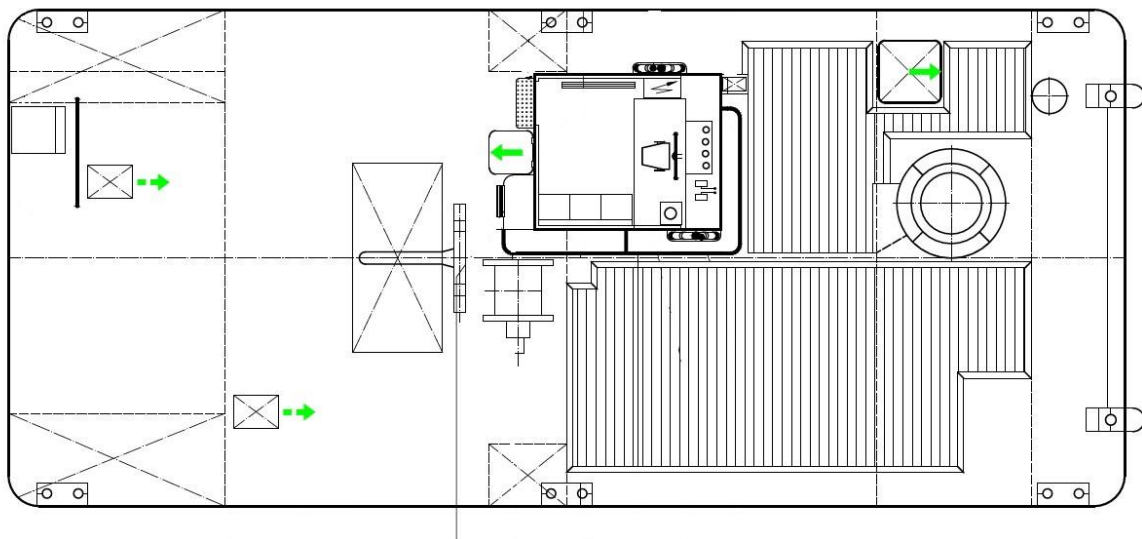










SIDE VIEWMAINDECK

BELOW MAINDECK