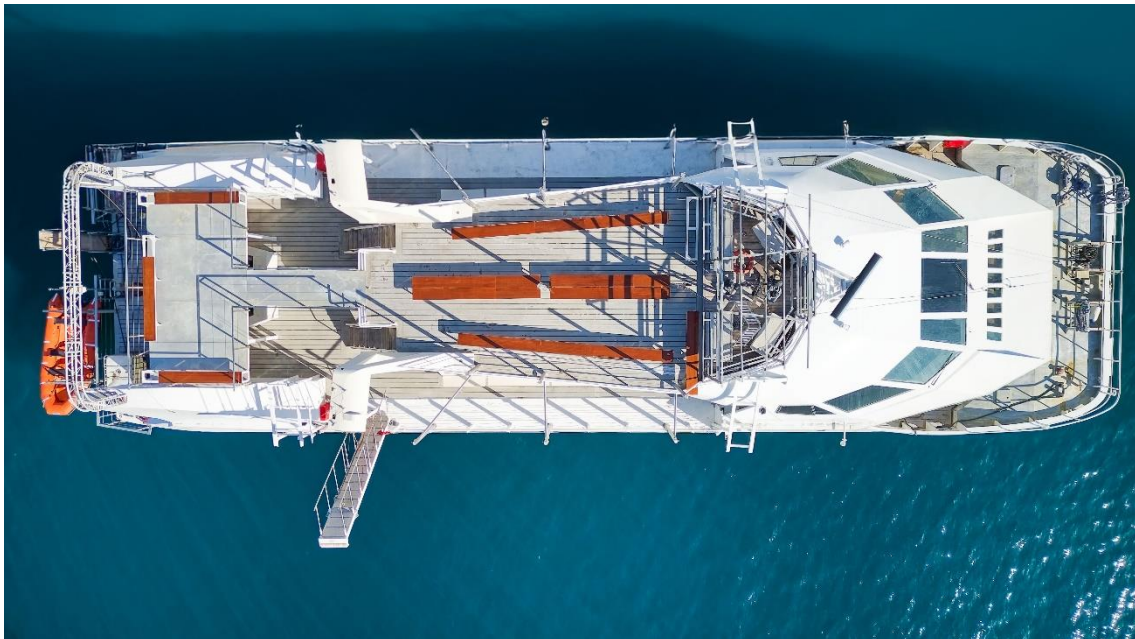
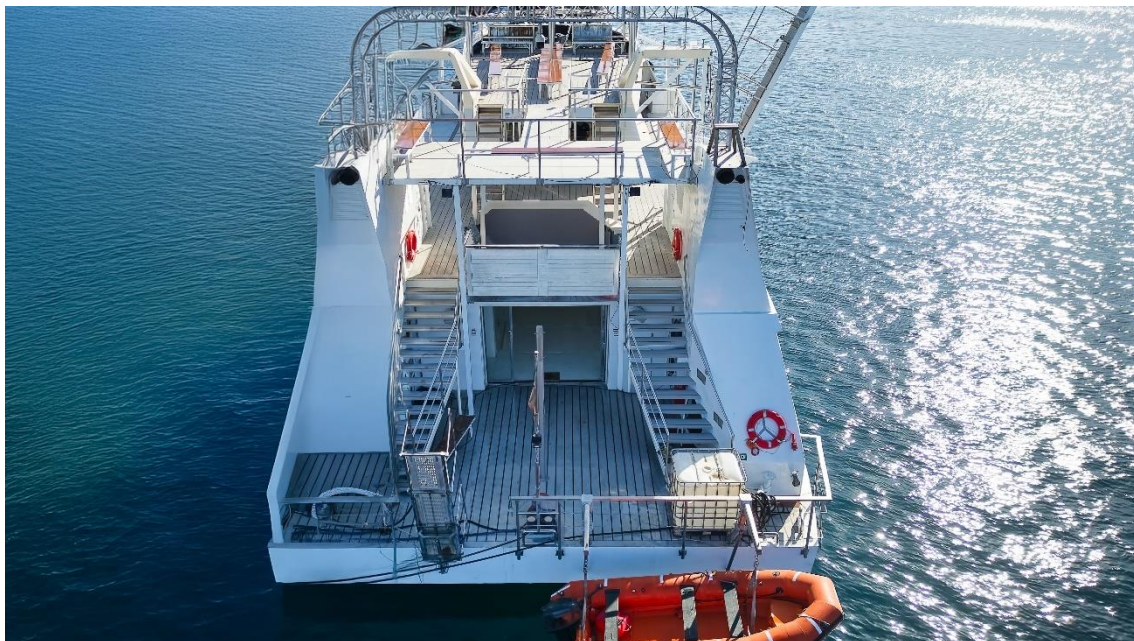
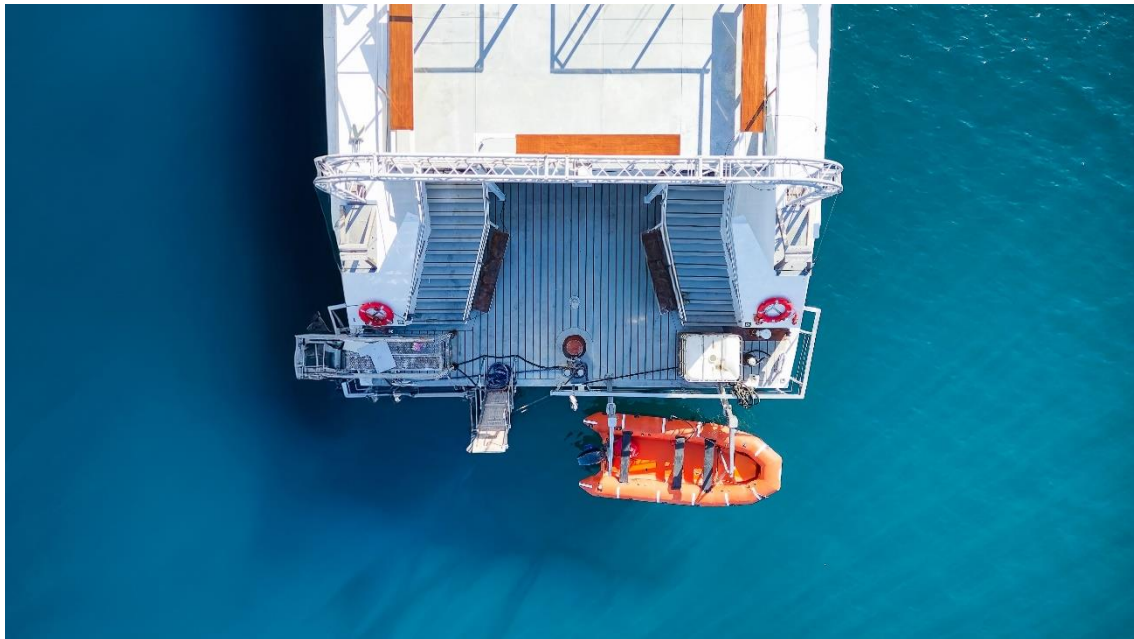


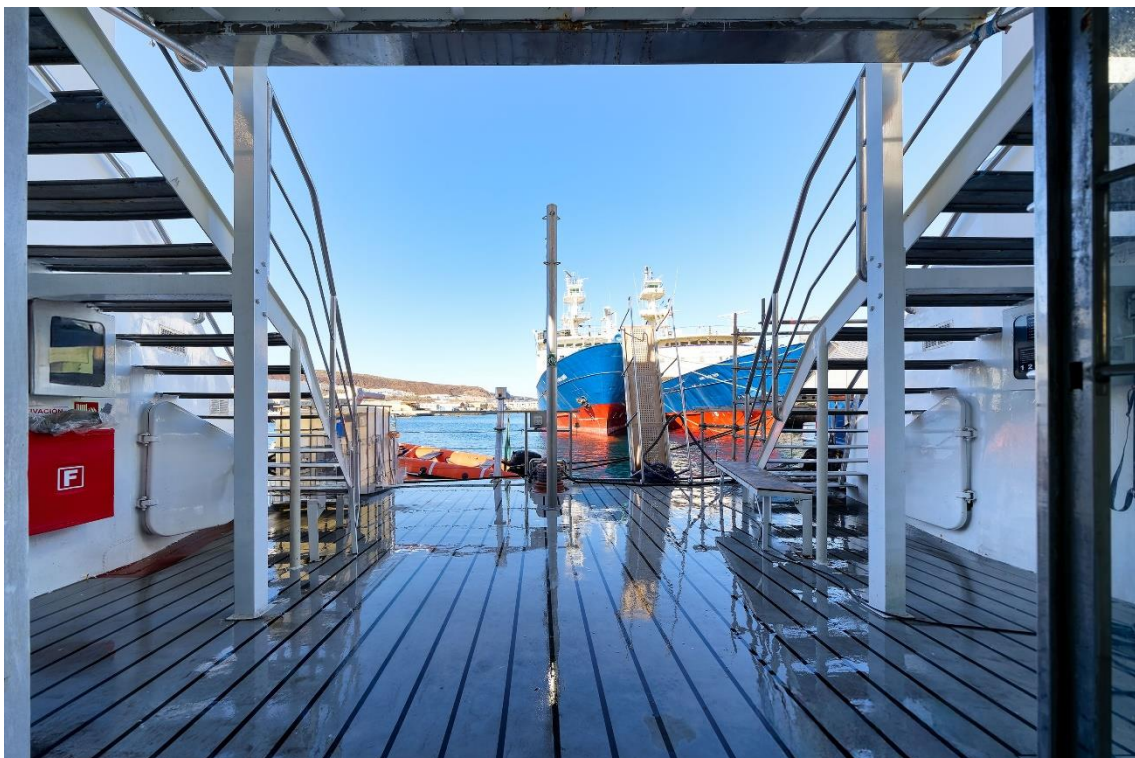
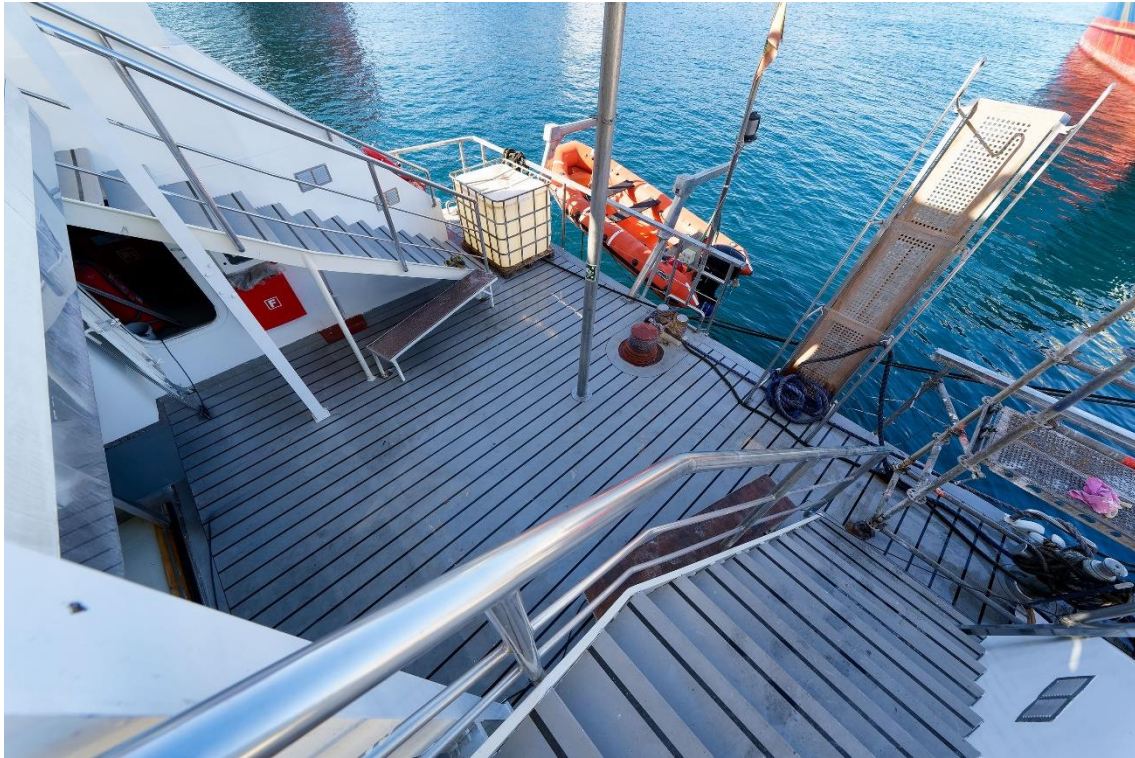
Presently no seats present, however we have enclosed some drawings with 3 options for seating capacity of respectively 375, 338 or 270 passengers.

Type	Glass Bottom Passenger catamaran
Built	1992, Italy
Dimensions	36.30 / 33.67 x 10.60 x 3.60 m
Draft	2.30 mtrs
Material	Steel hull, aluminium superstructure
Tonnage	425 GT / 127 NT
Propulsion	2x Schottel pump jets, type SPJ 130 II (fully overhauled 2022)
Main engines	2x Deutz, type MWM-TBD 234 V 12 (fully overhauled 2017)
Output	1548 hp total
Gearbox	Reintjes, type WVS 334
Speed	± 13 knots
Autonomy	400 nautical miles at cruising speed
Bilge pumps	2x Lenti, type 430 m ³ /hr, 32 mtrs head
Waste water treatment	KG Hamann wassertechnik
Generators	2x Kohler, type 70EFOZD, fully overhauled in 2019
Output	2x 88 kVA, 70 kW, 133 A, 380 V, 50 Hz
Alternators	2x Stamford, type UCM 274023
Tank capacities	Fuel oil 8880 ltrs Fresh water 8380 ltrs Black water 8930 ltrs
Passenger capacity	No seats installed (see below drawings for renderings)
Accommodation	Day accommodation only.
Nav./comm. equipment	Autopilot, gyro compass, gyro control unit, magnetic compass, plotter, AIS, radar, Watch keeping receiver, HF transmitter, HF receiver, VHF
Class	RINA ✕100 – A - 1.1 - NAV S ; TP With Special Notations ✕ IAQ-1 and ✕AUT UMS Classification Passenger vessel Class C as per EU Directive, under Spanish Flag for capacity of 350 passenger.
Remark	Vessel in a well maintained condition. In present condition no passengers seats fitted.



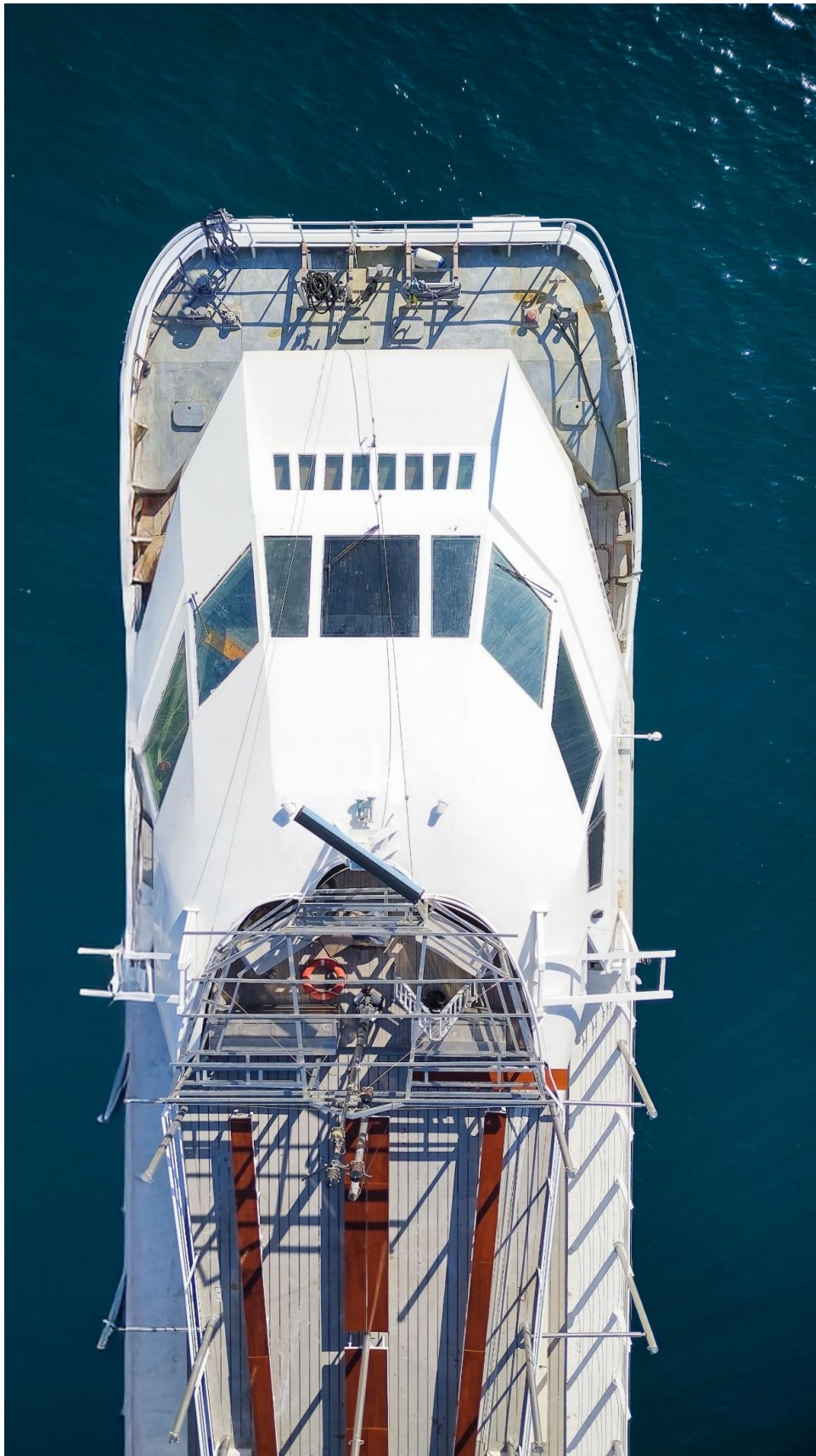




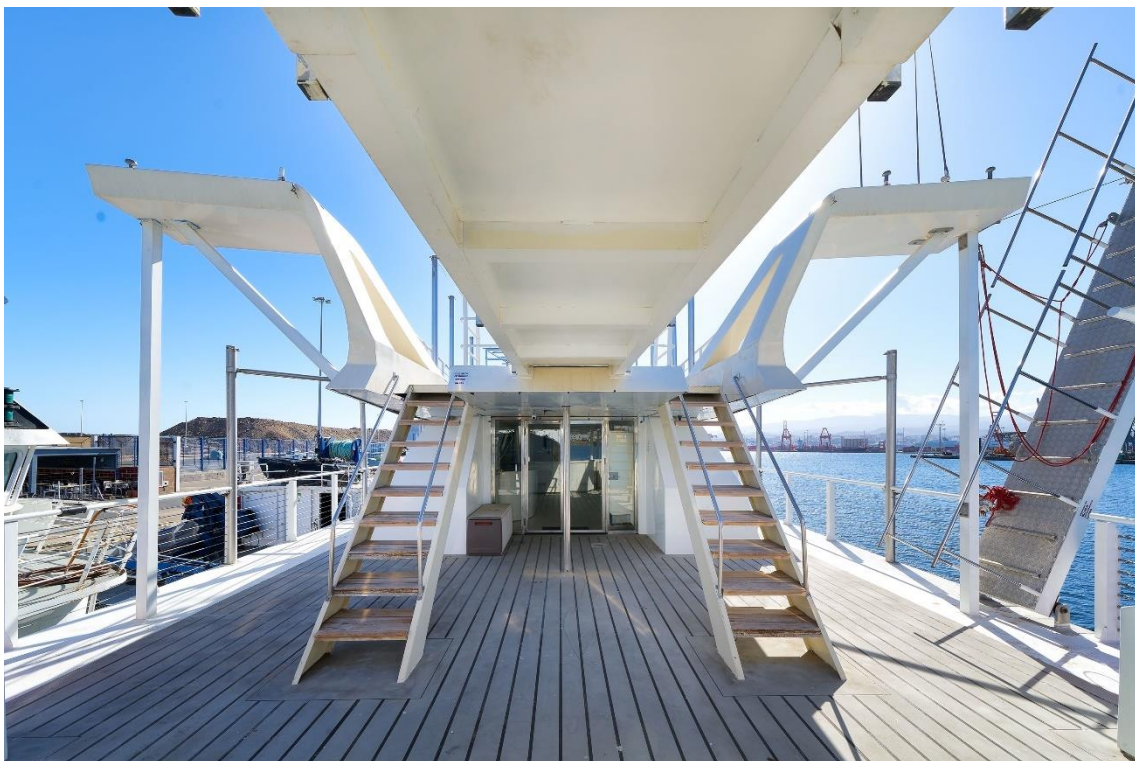












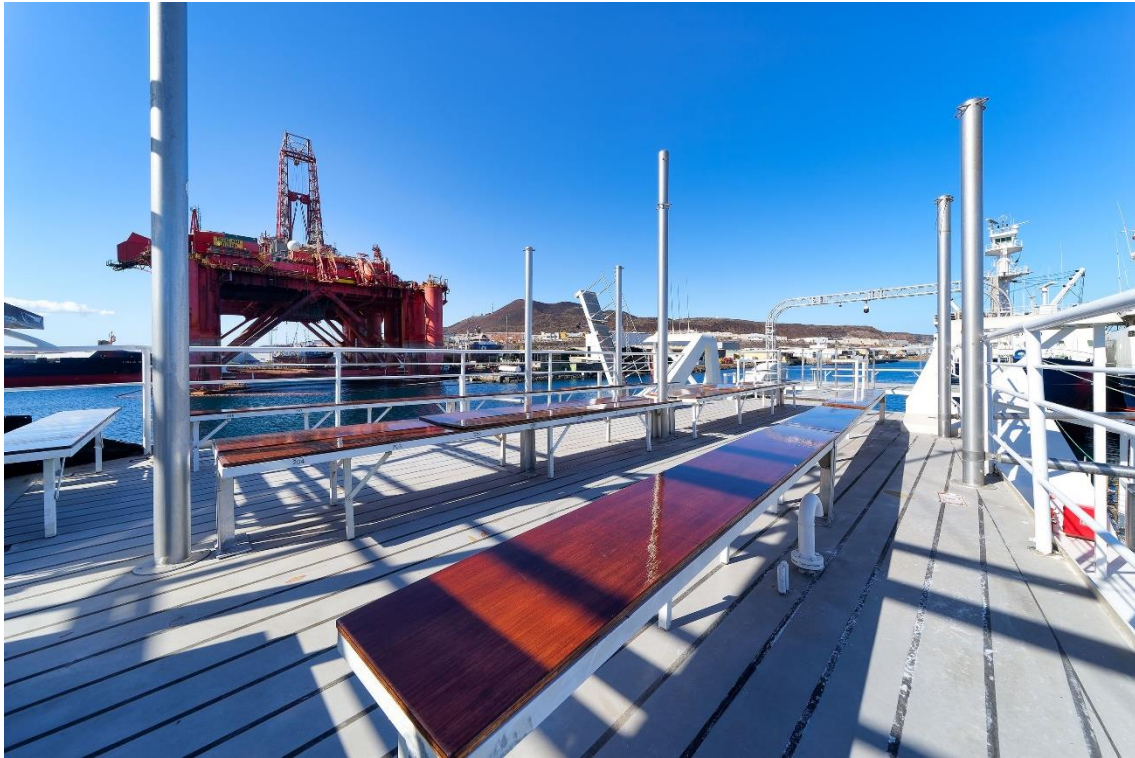






































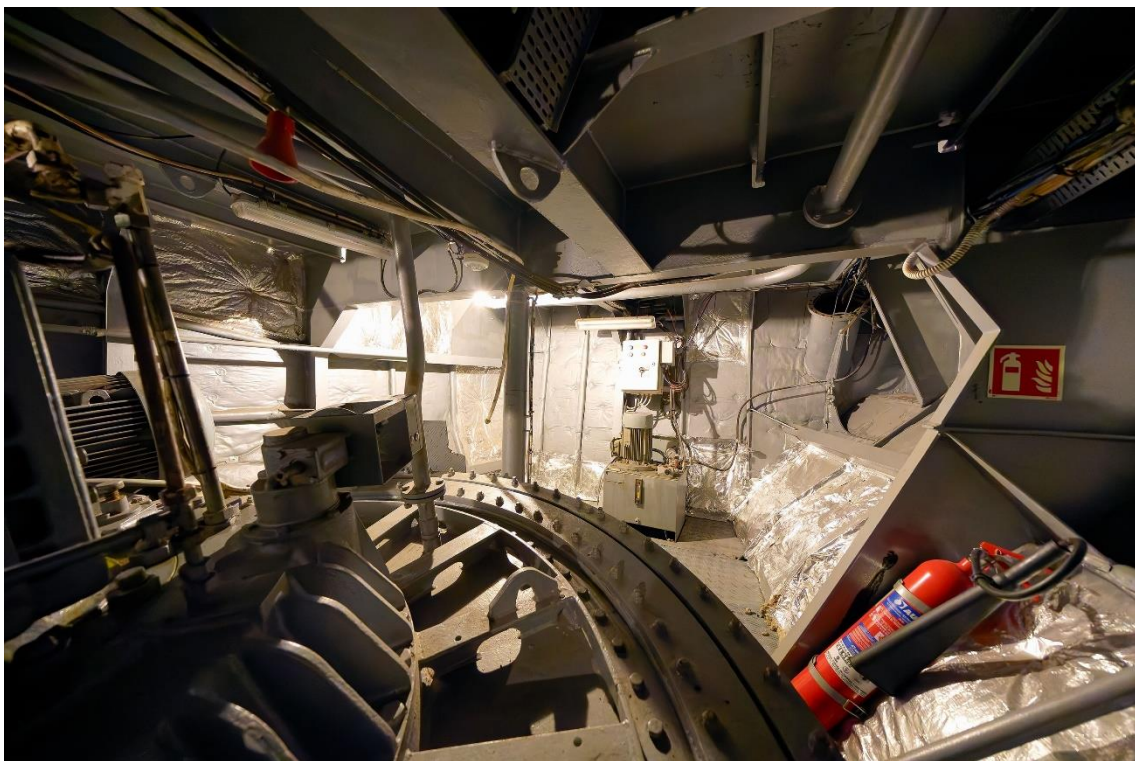






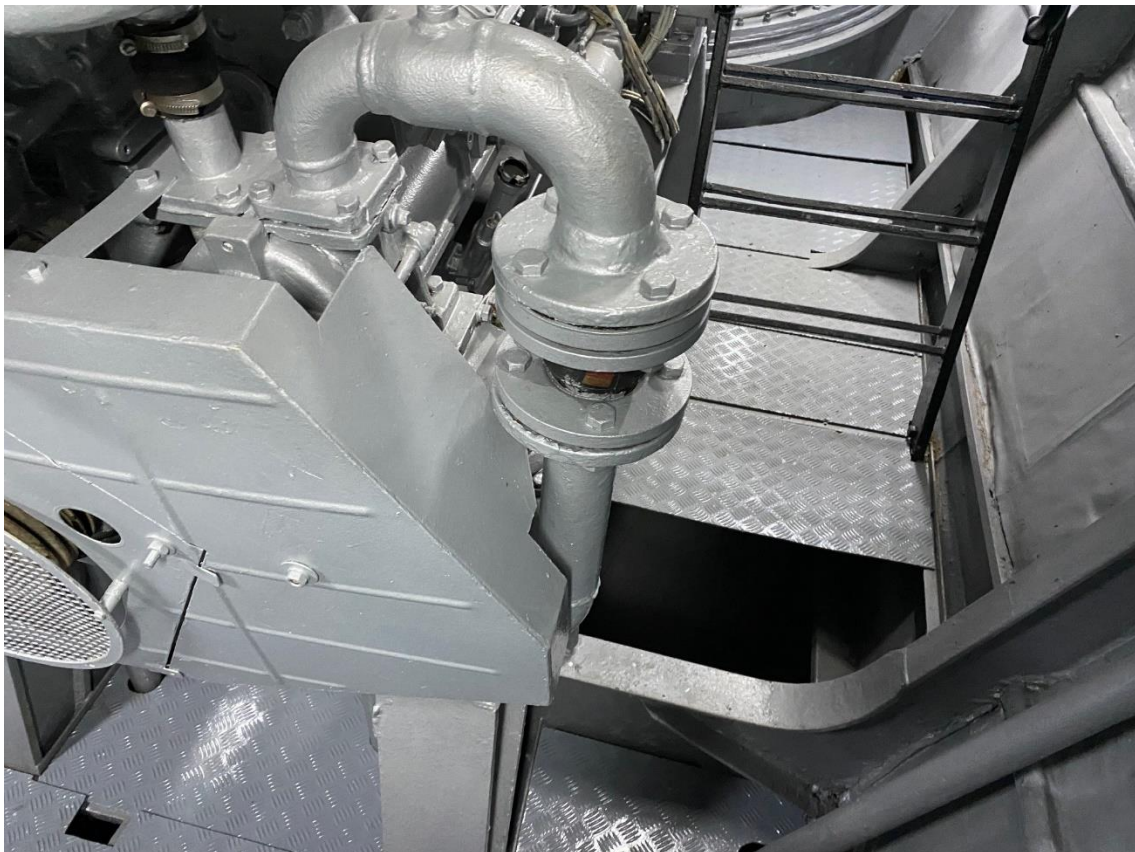








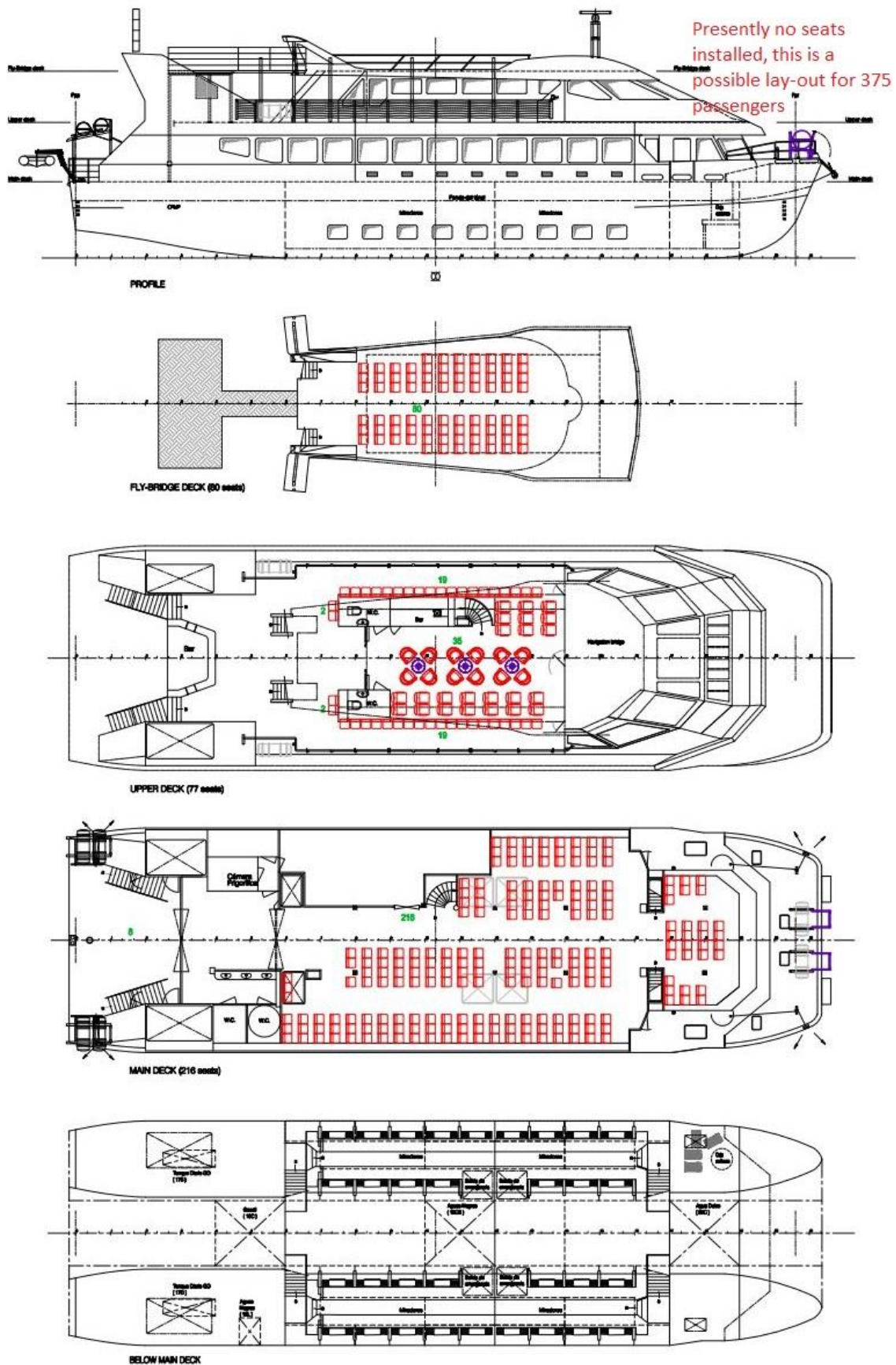






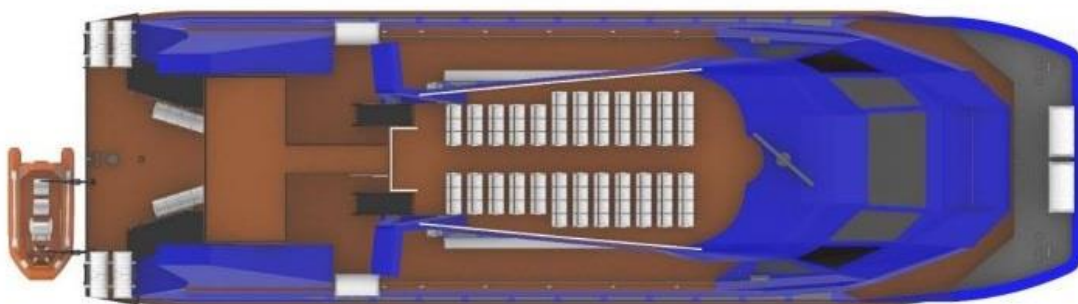
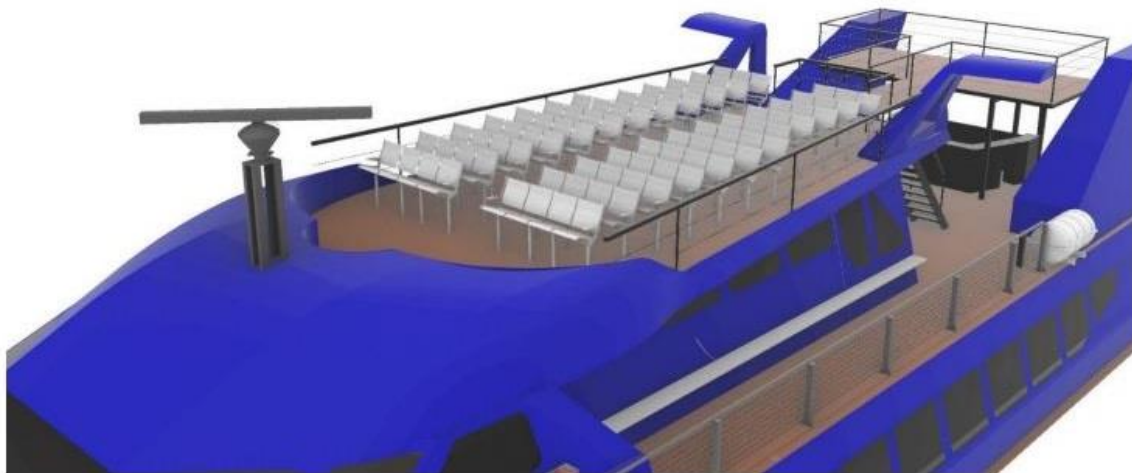


PASSENGER CATAMARAN (Glass Bottom)



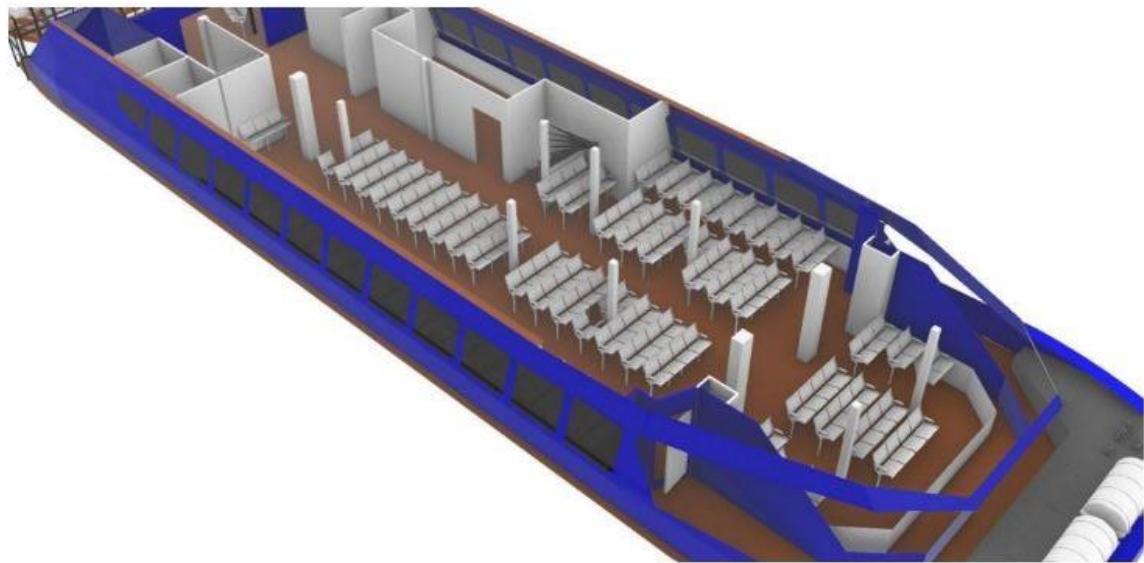
FLY-BRIDGE DECK (80 standard seats)

Presently no seats installed, this
is a possible lay-out for total 338
pax



MAIN DECK (216 standard seats)

Presently no seats installed, this is
a possible lay-out for total 338 pax



UPPER DECK (42 standard seats and 35 vip seat)

Presently no seats installed, this is a possible lay-out for total 338 pax

