

# Multi Cat 2712

'YN571880'



## GENERAL

Yard number  
Building yard  
Basic functions

Classification

571880 (Damen Shipyards Hardinxveld)  
Albwardy Damen (U.A.E.)  
Anchor handling, dredger service, supply,  
towing, pushing, transport, hose handling  
Bureau Veritas;  
I ✱ Hull • MACH  
Offshore support vessel  
Tug (design bollard pull 31 ton)  
Anchor Handling  
Unrestricted navigation  
• AUT-UMS  
IMO tier II certified

Emission regulations

## DIMENSIONS

Length overall	27.27 m
Beam overall (Incl. tires)	12.45 m
Beam moulded	11.50 m
Depth moulded	3.90 m
Draft min	2.85 m
Draft maximum	3.05 m
Deck area	150 m <sup>2</sup>
Deck load	10 t/m <sup>2</sup>
Gross Tonnage	299
Deadweight	150 t

## TANK CAPACITIES

Fuel oil	108.0 m <sup>3</sup>
Fresh water	31.3 m <sup>3</sup>
Sewage	10.5 m <sup>3</sup>
Dirty oil	1.7 m <sup>3</sup>
Lubrication oil	1.5 m <sup>3</sup>
Bilge water	4.1 m <sup>3</sup>
Hydraulic oil	2.3 m <sup>3</sup>
TW tanks	43.0 m <sup>3</sup>

## PERFORMANCES (trials)

Bollard pull	32.3 t
Speed	10.2 kn

## PROPULSION SYSTEM

Main engines	2x Caterpillar, C32 TTA ACERT – B-rating
Single engine power	895 bkW @ 1800 rpm
Total Power	1790 bkW, 2400 bhp
Gearboxes	2x Reintjes, WAF 573L, 7.091:1
Propulsion	2x Promarin, fixed pitch propellers
Propeller diameter	2x 1900 mm in Optima nozzle
Bow thruster	1x Veth, VT-180, 184 kW, electrical driven

## AUXILIARY EQUIPMENT

Generator sets	3x Caterpillar, C7.1, 118 kW, 147 kVA, 50 Hz, Parallel operated 4x 55 kW load sensing pumps
Hydraulic power	Azcue
Pumps	1x Westfalia OTC-2, 1150 l/hr
Fuel oil separator	Cooling channels and boxcoolers
Cooling systems	1x Selmar, Blue Sea 3500
Sewage treatment system	Chilled water system
HVAC	Damen Marine Service (Tier III prepared)
Silencers main engines	LED
Lighting	

## DECK LAY-OUT

Anchor	2x 300 kg HHP (1 spare)
Anchor winch (hydraulic)	1x Kraaijeveld, KAB-1-H-17.5D
Deck crane fore	1x HS Marine, AKC 290 LHE3, 11.3 t @ 16.5 m, 25.1 t @ 8.3 m
Deck crane aft	1x HS Marine, AKC 290 LHE3, 11.3 t @ 16.5 m, 25.1 t @ 8.3 m
Anchor handling winch	1x Kraaijeveld, KA-20-H-TR,
Capacities	100 t @ 3 m/min pulling force 1 <sup>st</sup> layer 150 t brake holding force 1 <sup>st</sup> layer Wire capacity Ø 44 mm x 650 m
Towing winch	1x Kraaijeveld, KA-20-H-TR,
Capacities	50 t @ 10 m/min pulling force 1 <sup>st</sup> layer 100 t brake holding force 1 <sup>st</sup> layer Wire capacity Ø 36 mm x 650 m
Towing pins front	1x DMC, double pin type with chain stopper
Bow roller	Length 5700 mm, Ø 1000 mm, SWL 130 t
Stern roller	Length 2000 mm, Ø 750 mm, SWL 110 t
Tugger winch	1x Dromec, HPV-12000, SWL 12 t @ 20 m/min

## ACCOMMODATION

Comfortable heated and air-conditioned accommodation for 7 persons in two double crew cabins and three single officer cabins. A combined galley and mess is provided. Sanitary facilities and stores are fitted. The technical space is fitted below wheelhouse. A deck store with entrance from main deck is placed in front of the wheelhouse.

## NAUTICAL AND COMMUNICATION EQUIPMENT – GMDSS A3

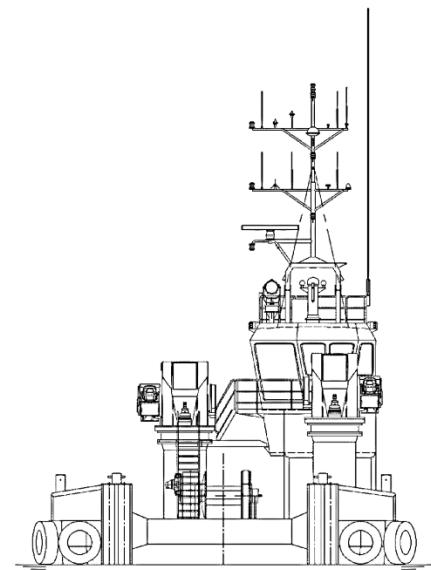
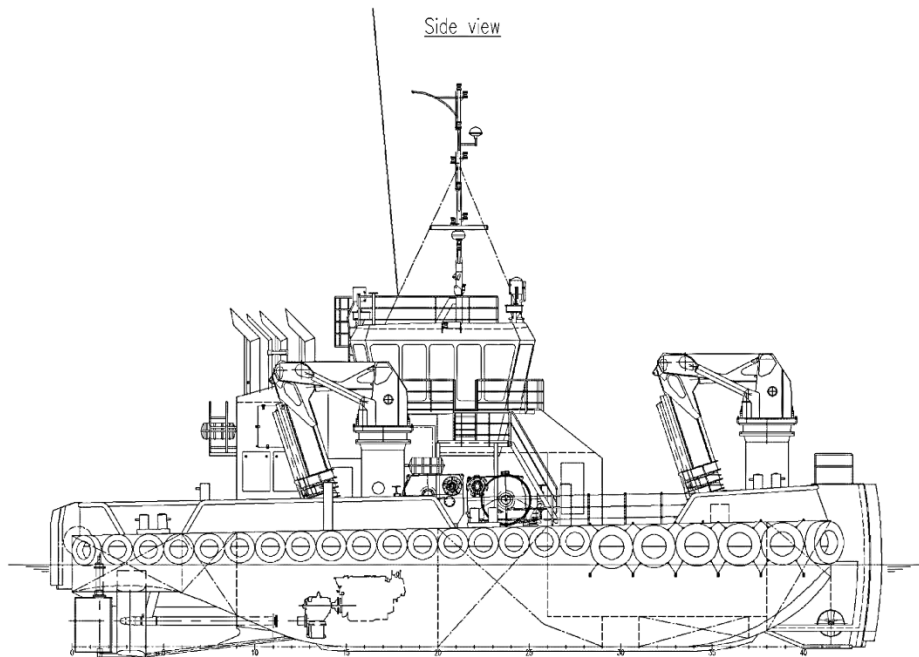
Searchlight	2x Pesch, 2000 W
Radar system	1x Furuno, FAR-1518BB
Magnetic compass	1x Cassens & Plath, Reflecta 1
Autopilot	1x Simrad, AP-70
Gyro compass	1x Tokyo Keiki, TG-8100
GPS	1x Furuno, GP-170
AIS	1x Furuno, FA-170
Echosounder	1x Furuno, FE-800
Speedlog	1x Skipper, EML-224
Intercom	1x Phonetech, CIS-3101
Watch alarm	1x Marble, MS-421B
VHF / DSC	2x Cobham, RT-7222
Handheld VHF	2x Jotron, TR-30
SSB	1x Cobham, Sailor 6310
Inmarsat - C	2x Cobham, Sailor 6110
Navtex	1x Furuno, NX-700B
Radio / TV aerial	1x Seasystems, SEAS-6000

# Multi Cat 2712

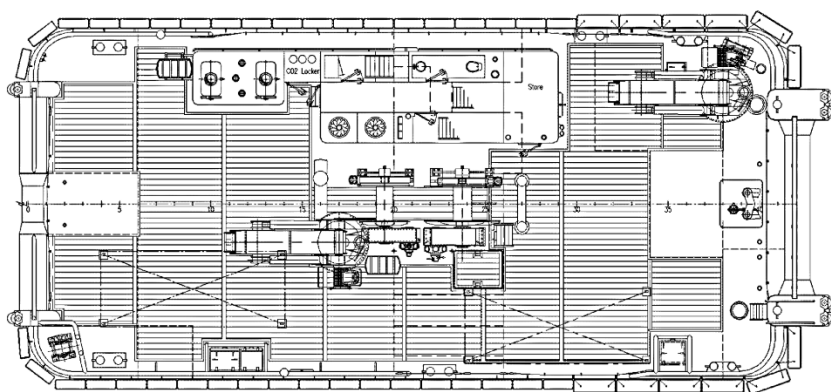
'YN571880'



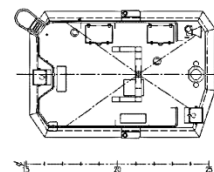
Side view



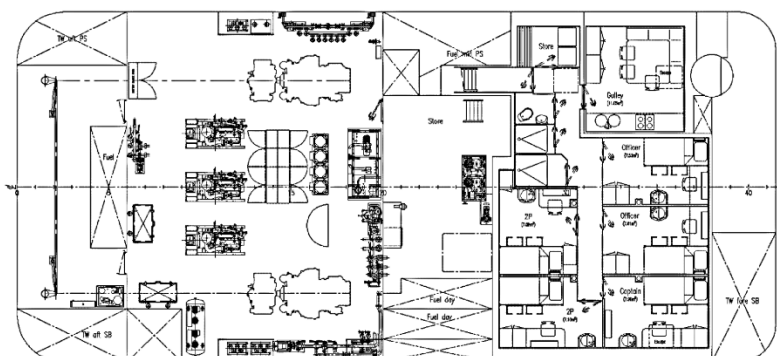
Maindeck



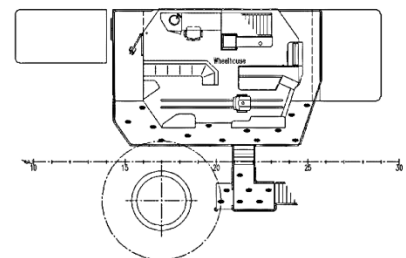
Top deck



Below Maindeck



Wheelhouse deck  
7550 above base



**DAMEN**

Damen.com

© No part of the leaflet may be reproduced in any form, by print, photo print, microfilm, or any other means, without written permission from Damen Shipyards Group





**DAMEN**

Damen.com

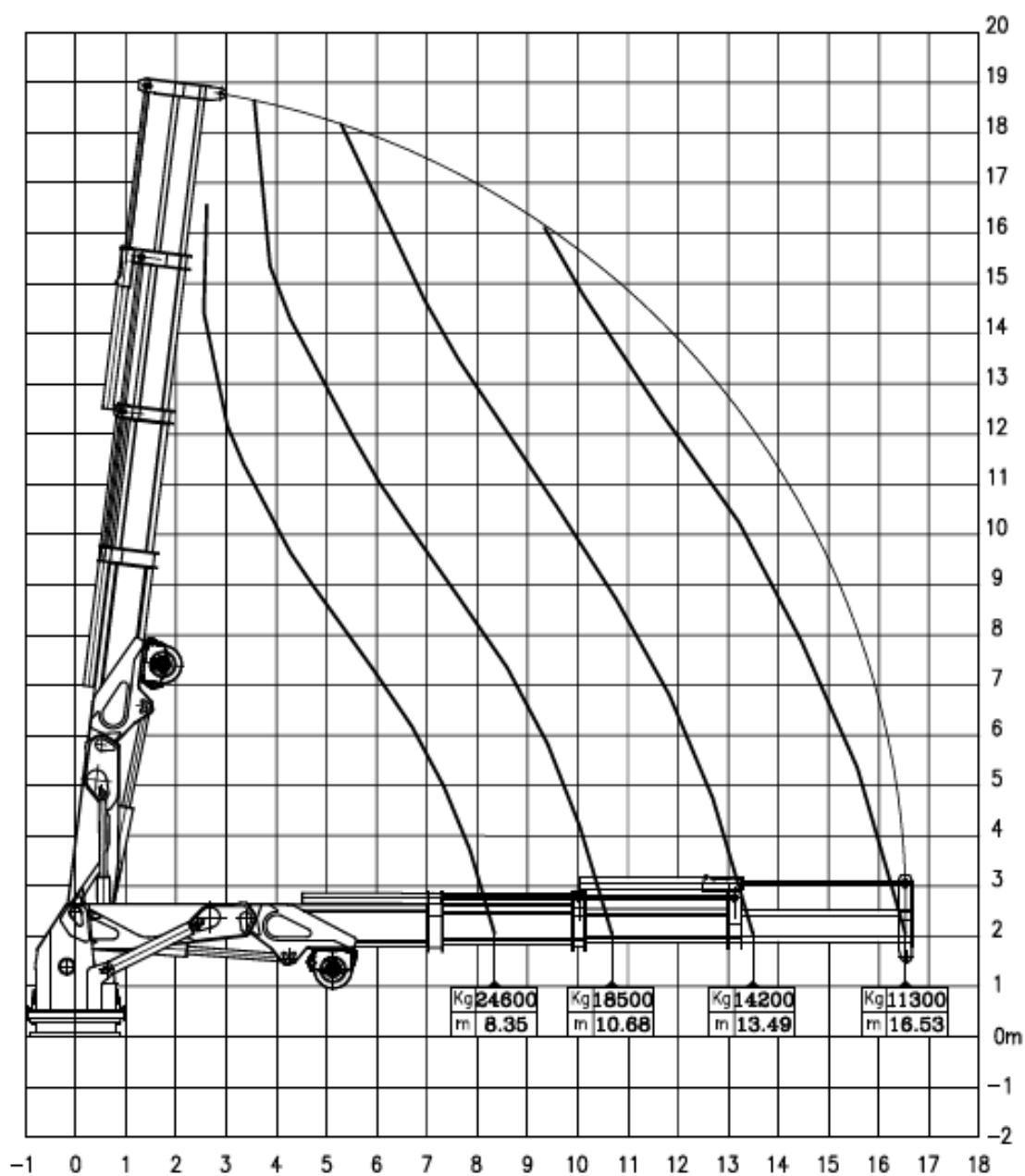
© No part of the leaflet may be reproduced in any form, by print, photo print, microfilm, or any other means, without written permission from Damen Shipyards Group



# WORKING DIAGRAM with HOOK

Max Permitted Heel/trim Angles 5°/2°

**HS MARINE**



## Marine Crane model AKC 290 LHE3

DESIGN STANDARD  
BV NR 526 DT R03 E (July 2021)  
SHIPBOARD CRANE (harbour or sheltered water use)  
 $\psi_0 = 1.03$  (duty category II),  $\psi_{cz}$  min = 1.15  
Wind speed = 25 m/s

**DAMEN**

Damen.com

© No part of the leaflet may be reproduced in any form, by print, photo print, microfilm, or any other means, without written permission from Damen Shipyards Group