



**Unprecedented maritime
solutions for tomorrow, today**

DAMEN
OCEANS OF POSSIBILITIES



Welcome to Damen

On behalf of my family, and all our colleagues throughout the group, it is my pleasure to welcome you to the world of Damen. Within the pages of this brochure, we are proud to showcase our products and maritime solutions and to share our story with you.

Damen was founded, as a relatively small enterprise, by my grandfather and great uncle in 1927. My father, Kommer Damen, took the lead in 1969 and since that time the company has grown into an international organisation, employing over 12,500 people in 35 countries. While much has changed in the years since then, the driving force behind our success remains the same – our clients.

Our commitment to providing our customers with a quality solution they can depend on remains at the core of what we do and is a source of pride to our people.

Today, the delivery of relevant solutions increasingly means a sustainable solution. As a family business, with a long-term view, sustainability is a matter close to our hearts as we take responsibility for securing a future for the next generations, as you will see in these pages.

At Damen we are working hard to further maritime sustainability in all that we do. We are streamlining our processes and evolving our products. We are boosting efficiency with digital connectivity and integrating increased circularity to ensure minimal environmental impact throughout the lifetime, and beyond.

Most of all, though, we are listening. The development of Damen, our products and services, results from what you tell us you require for your business to thrive. That will never change. As we look towards the future, we look forward to continuing to innovate and creating the solutions that work for you.

Arnout Damen
CEO
Damen Shipyards Group



» Connecting your world
with our passion for vessels

The Damen family
Shipbuilders since 1927

Our mission

Becoming the most sustainable and connected shipbuilder in the world.

Our vision

At Damen, we believe that oceans, seas, lakes and rivers offer humanity a growing range of possibilities in the areas of trade, food, energy and recreation.

We offer unprecedented maritime solutions for this through design, shipbuilding, ship repair and related services.

We offer versatile platforms to connect the world and enable you to be successful.

Innovative ships that inspire and raise the standard in terms of safety, reliability, efficiency, ease of use and – crucially – sustainability.



Our core values

It is always our aim to do the very best that is possible; to be merely adequate is insufficient. This philosophy runs through everything we do. Our goal of exceeding expectations extends beyond the delivery of services and products to include quality, sustainability and safety.



Fellowship

We believe firmly in our team – but also in the strength of the individual – working together as One Damen. Together with you and with our industry partners, we form close collaborations focused on ensuring your total satisfaction.



Craftsmanship

In the previous century, we revolutionised shipbuilding. Thanks to standardisation and serial production, we were able to supply our customers faster with better ships. More than ninety years and 7,000 ships later, those pillars are unchanged. Their importance is only increasing with the rising need for maritime sustainability and digitalisation. It is not efficient to find new solutions for every single ship to get them green and connected.



Stewardship

As a family business we look to the long-term. Our goal is to secure the future for the next generations. We achieve this by greening our vessels – and the processes by which we create them. We believe passionately that, in order to ensure the opportunities presented by our waters for the next generation, we must utilise them as efficiently and responsibly as possible. This is why we aim to become the most sustainable shipbuilder in the world. Our ambitions lie in circularity and zero emissions sailing.



Entrepreneurship

We strive to understand your business and to help you add value to it as a trusted partner. We offer ship-as-a-service concepts, in which you pay for use and not for ownership, as well as a range of financial services tailored to your requirements. In this way we can support you over the entire product lifecycle; from design, engineering, construction and maintenance to the recycling of our ships.

Damen started out in 1927, a family-owned company amongst the shipbuilding community on the river Merwede in the Netherlands. Today, we are still there on the same river banks, still a family company. With over 35 yards and service hubs all over the world, however, our focus is global.

We are well-known for our unique newbuild philosophy; the construction of standardised vessels for stock. This means we are able to deliver your assets in the fastest possible timeframe. And, with RD&I undertaken over successive generations of series production, you can count not just on continual evolution, but on reliable performance.

The commonality and reliability of our portfolio equals reduced maintenance requirements, providing you with maximum vessel uptime, and resulting in the lowest possible total cost of

ownership over the lifecycle. We take pride in this and make sure that the same reliability and craftsmanship is applied also to our extensive range of marine components and the ship repair and conversion services that we deliver.

Building on this firm foundation, we are looking towards the future, to the next generations. Our mission is to support our clients around the world with cutting-edge solutions that enable them to harness the growing potential of the maritime industry in a responsible manner.

We are proud of our achievements in accelerating maritime sustainability over the past years. Working together with you, and industry partners throughout our sector and beyond, we have developed a wide range of reduced emissions solutions. There is much still to be done in ensuring a sustainable maritime future and the work we do today is of critical importance. It is our aim to deliver today the vessels and solutions that will secure a clean, circular and secure tomorrow.

Proud to offer you the best solution

Standardised designs
Proven technology

High resale value
Guaranteed performance

Interchangeability
Of spares and equipment

Vessels in stock
Short delivery times

Worldwide network
Local presence

Integrated support services
Entire lifecycle support



Summer School organised
by Foundation Damen Support

Taking our responsibility seriously

Over the years Damen has grown into a large organisation with a global footprint. With such a position comes responsibility. Damen takes very seriously its obligation to the communities in which it operates, and to society as a whole.

Together with its partners, Damen works towards a range of socially relevant topics such as innovation, lifelong learning and environmental sustainability. The topic of sustainability has, in recent years, become a matter of great strategic importance for the group. We have made it one of our four goals, together with digitalisation, operational excellence and increased customer-centricity, themes which are overlapping and mutually supportive of one another.

Examples of this philosophy in action include a wide range of social sponsorship activities, supporting local events, associations and sports clubs in proximity to our yards and offices. We are also proud to lend support to local development projects. For example, Damen Song Cam Shipyard organises an annual corporate social responsibility programme. Damen Shipyards Cape Town, meanwhile, supports start-ups in South Africa, furthering local employment and helping development of a sustainable industry in the country.

Recently, we have created the Foundation Damen Support to provide help for colleagues in times of crisis. The Foundation was begun at the outbreak of the Russia-Ukraine war to support colleagues displaced by the conflict. Since then, it has also provided assistance to those affected by natural disaster in other parts of the world.

To further develop sustainable and social themes, it is essential we coordinate our efforts with other stakeholders working towards the same challenges. This includes those in authority. For that reason, we have opened new office locations in The Hague and Brussels where we can maintain close lines of communications with governmental bodies, to advance the causes of our industry and of a sustainable world secured for future generations.



» Innovation

Innovation has always been an important theme at Damen. The standardised shipbuilding concept and the Sea Axe Hull attest to that. Today, with our industry facing the challenges of energy transition and increasing maritime sustainability, we continue to provide relevant, cutting-edge solutions. Examples include the Damen Air Cavity System (DACS) that reduces a vessel's resistance in the water, resulting in significant fuel and emissions reductions. We are also conducting wide-ranging research programmes, together with industry partners, improving efficiency and minimising the impact on the environment, for example, reducing noise and vibrations to a minimum.

» Research

The standardised shipbuilding concept has significant implications for Damen's RD&I activities. Building series of vessels has enabled Damen to develop extensive RD&I programmes that ensure continual knowledge and product portfolio evolution and enable the adoption of robust and reliable breakthrough technologies.

» The vessel factory

At Damen shipyards all over the world, the standardisation process is most evident in the production of tugs. State-of-the-art equipment and facilities are applied to the construction of proven, reliable vessels in the fastest possible timeframe.

» Modularisation & one-offs

Standardisation does not imply a set approach with no flexibility. Damen is also experienced in the production of custom one-off vessels. Additionally, an extremely wide range of modular options is available for the standardised ship portfolio, ensuring vessel optimisation whatever the task.



The Damen standard

Damen is internationally renowned for its unique shipbuilding philosophy. The Damen standard is about providing clients with the fastest possible delivery of proven, reliable technology. The benefits of this approach are wide and include minimal maintenance and low total cost of ownership.

Setting standards in sustainability

The Damen standard is also about paving the way to increased maritime sustainability. Applying our series-based approach to shipbuilding we are able to offer advanced, fully-electric and hybrid propulsion systems for our vessels. Our research and development department plays a prominent role in the assessment and application of alternative fuels in cooperation with leading research institutes and industry partners.



Compliance because we care

Damen is committed to be fully compliant with applicable rules and regulatory standards. Not only because it is required, but also because we care. We see this as an integrated component of our corporate social responsibility. This includes amongst other things anti-corruption, adhering to export control restrictions & sanctions, respecting human rights, and maintaining a safe and secure workplace for all. These standards do not exist in isolation and complying with each of them remains of great importance to Damen. Always and everywhere.

» Smart sustainability

Aware that our products carry the potential to impact the environment, we do everything we can to minimise this. Environmental sustainability is a primary focus of our activities. A number of our products fall within the range of our dedicated Damen Green Solutions business unit.

» Clean and green

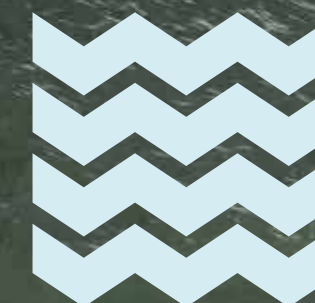
In line with the long-term view we take, Damen has made concerted efforts towards making its workplaces clean and green. Investment in modern equipment, a mindful approach to energy consumption and a responsible use of cleanly produced electricity are just a few examples of the steps we are taking in this direction.

» Safe place to work

Our commitment to safety is not only applied on board a Damen vessel, it is an important part of our workplace philosophy. Close attention is paid to equipment, workplace layout, the logistical flow of operations and the maintenance of best practice at all times.

» Code of conduct

Not wanting to leave things to chance, we have developed a code of conduct, setting out in detail the steps we take to maintain compliant behaviour in all our global operations. The code stipulates the behaviour demanded when working with Damen; as an employee and as a supplier. The code of conduct serves as basis for our compliance programme throughout the entire organisation.





» Design

Damen vessels are developed in close cooperation with our customers. We are always listening to their feedback in order to incorporate their ideas into the next generations of our vessels.

» Newbuild

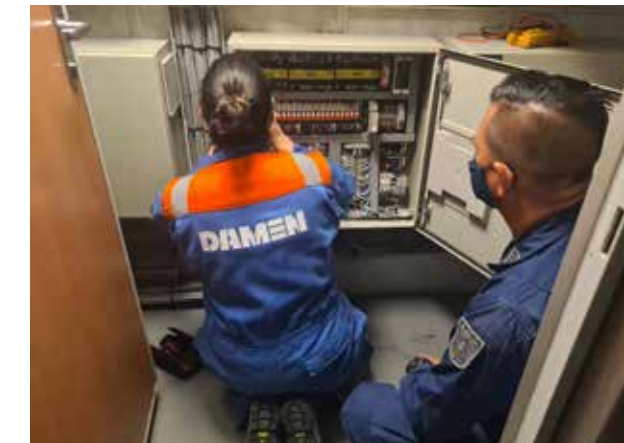
Since the beginning, we have built over 7,000 vessels at our yards and the yards of our partners all over the world. As well as proven designs from our portfolio, these have included many examples of custom vessels, tailored to specific client requirements.

» Ship equipment

Having equipment that is tailored to the requirements of your vessel is essential for ensuring optimal performance. The systems that are vital for propulsion, manoeuvring and other critical functions include nozzles, winches, controls and steering and rudder systems. Their performance has a significant impact on our customers' onboard experience and that is why Damen designs and manufactures this equipment in-house.

» Services

Damen offers a wide-ranging portfolio of customer support services, covering the vessel's complete lifecycle. From financing at start-up, through construction, maintenance and 24/7 support, right through to recycling at end of life. And, with a global network of Service Hubs, we are able to ensure that there is always someone available to support you in your time zone.



Complete lifecycle

Wherever there's water, there's Damen. It's not just words, it's our business model. With multi-market operations we apply our values of quality craftsmanship, proven technology and low total cost of ownership across the entire maritime spectrum.



Operating globally

Damen has grown from a single shipyard on the banks of the river Merwede in the Netherlands, into a truly global company. From the beginning, we have believed that to care for our customers, we must be close to them. This philosophy has led us to expand internationally. Today, Damen operates over 35 shipyards and 20 companies in 20 countries, supported by a worldwide sales and service network.

» Acting locally

With Damen Technical Cooperation (DTC), you can build your Damen vessel at a yard of your choice, anywhere in the world. DTC can provide designs and licences, materials packages and building support, either individually or in combination.

» Joint ventures

In seeking to be close to our clients, Damen operates in close collaboration with customers in key locations. Working together with local industry, often in joint ventures, we aim to provide a consistently high level of service wherever we operate.

» 12,500 employees

Across all of its locations, Damen has over 12,500 employees. Given the diversity of the Damen product portfolio, the work can be challenging. However, it is also fun, with a lot of freedom, responsibility and opportunities for both personal and career development.

» Damen Shiprepair

With a network of repair yards located strategically around the world, Damen Shiprepair offers a comprehensive range of maintenance, repair, refit, conversion, and decommissioning/disposal services, primarily to seagoing vessels. Additionally, Damen Shiprepair offers flexible harbour and voyage repair options, to assist you wherever you are in the world.

GLOBAL PRESENCE AND SUPPORT

Founded in the Netherlands

Founded in 1927 in Hardinxveld in the Dutch province of South Holland, Damen is a true Dutch company at heart. The values we started out with – reliability, quality craftsmanship, value for money and building close relationships with customers – remain a strong part

of our culture today; a culture that we have taken to the world. Damen operates over 35 newbuild and repair yards, plus Service Hubs, sales offices and marine components facilities in 20 countries across six continents.





» Knowledge transfer

Whether the construction of a vessel locally is necessary to meet local content requirements, or to gain access to remote locations, the result is the same: the transfer of shipbuilding knowledge and development of local industry.

» Access to proven designs

DTC offers access to proven, standard designs from Damen's extensive portfolio, combined with the flexibility to meet specific requirements.

» Flexible approach

The flexibility extends to the DTC process, which can include everything from the licence and basic design to comprehensive support during the build, as required.

» Building support

Support during the construction scope is tailored to the client's requirements, covering anything from welding to senior management.

» From the outset

We are on hand from the start with access to attractive financing and support during the tender/bid phase.

» Yard upgrades

DTC is even able to help upgrade the local yard with state-of-the-art technology in preparation for the project.

» Short delivery times

We maintain an extensive supply of standard parts and components, ensuring rapid delivery.

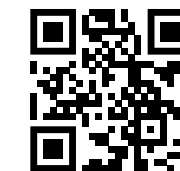


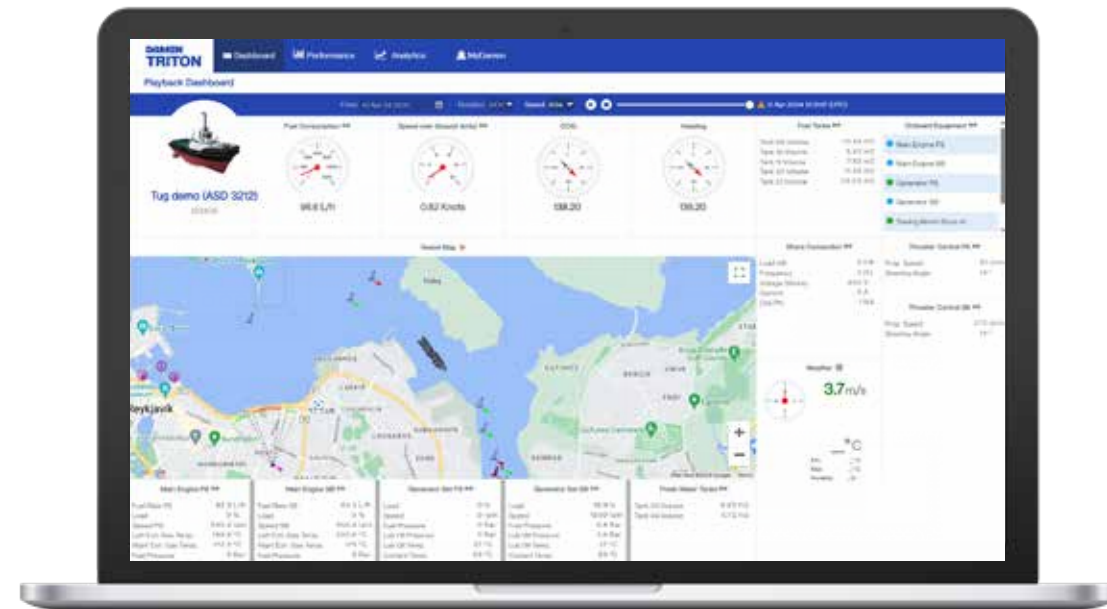
Offshore Patrol Vessel (OPV) DN2000



Damen Technical Cooperation

Damen Technical Cooperation (DTC) delivers everything from licencing and vessel design to a complete materials package for the Damen vessel portfolio. If required, DTC also provides construction support and even shipyard upgrades. This highly flexible option results in a valuable technology transfer and allows owners to combine Damen quality with the benefits of local production.





Damen Digital Solutions

In this age of digital connectivity, Damen builds digital twins of the vessels we build. These twins in computers contain all the elements that the real ship consists of. A digital twin is not only the copy of the design in a computer, it is connected to all of the sensors in the real ship. Operators at the ship owners' office can log in to their vessel and see real time where she is navigating. More importantly, they can see particulars of the vessels' performance and condition. At Damen Digital Solutions, we provide this service to vessel owner's, even for vessels that are not Damen-built. We call this system Damen Triton.

» Facilitate integration

Digital twins create the possibility to test the integration of equipment into the network aboard in advance. In the test facility at Damen headquarters in Gorinchem, we simulate equipment performance. This provides a reliable prediction of performance under heavy loads.

» Remote monitoring and control

Smarts sensors enable the detection of changes in performance at an early stage. Thanks to connectivity of the system, the whole vessel can be monitored from the ship owner's office. Utmost care is taken to protect the internet connections of vessels. User authentication and protection from cyber criminals is of the highest level in Damen Triton.

» Performance improvement

Damen Triton provides data indicating fuel consumption, temperature, power output, speed or amount of load moved and more. This enables the onboard Chief Engineer and Captain to optimise these variables to achieve optimal efficiency. This can also be monitored from ashore.

» Financial benefits

The way Damen Triton predicts the need for maintenance, while motivating the crew and ship owner to operate at optimal output, reduces downtime and provides constant insight about the vessels' condition and value. Investors have more security about return on investment. Digitalisation with the Damen Triton digital twin sets new frontiers in the maritime industry: to achieve unprecedented efficiency with minimal downtime.

» Reporting

Damen Triton can generate a wide variety of reports that give you valuable insight into your operations. These include:

Emissions report

This is important for the Energy Efficiency Existing Ship Index (EEXI) and Carbon Intensity Indicator (CII).

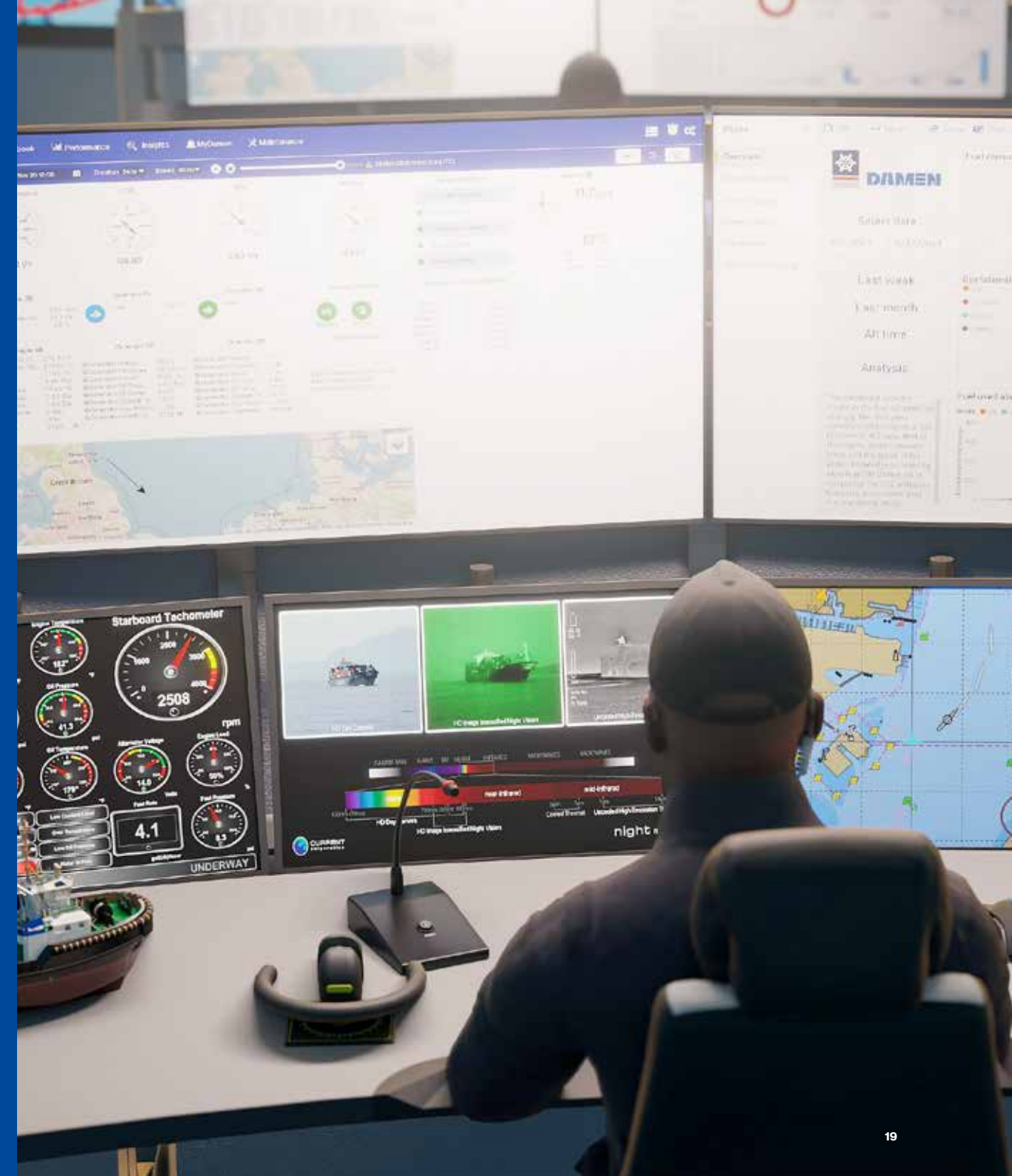
Fuel report

Fuel consumption is combined with the operational profile of the ship, which helps to show where efficiency can be gained.

E-ship report

This shows energy use in relation to the availability of power from the battery bank.

DAMEN
TRITON





Research, Development & Innovation

Our RD&I programmes have led to many ground-breaking innovations. Commitment to continuous improvement reduces the environmental impact of our products over the entire lifecycle. Digitalisation of Damen products and services is an important part of our efforts. The potential of big data, almost limitless computational power and cloud computing enable us to develop life-like simulation models, used to predict vessel performance. Damen acts at the forefront of knowledge and innovation, enhancing sustainability and digitalisation.

» Hydromechanics programmes

Research programmes aim to improve the performance, operability, safety and efficiency of our vessels. Our focus is on the reduction of energy and power demand, by exploring air lubrication, developing fit for purpose designs, testing them for operational conditions and investigating safe manoeuvring and autonomous navigation.

» Structures & production

Our research focuses on optimisation of structural engineering, efficient and innovative application of materials and further efficiency of production at the yards. By developing digital twins we can review the implication of different structural designs, which helps us to develop safe, reliable and high quality products that can be produced, operated and maintained in an efficient and sustainable manner.

» Mechanics & systems

Investigating and developing ways to implement alternative fuels, advanced drivelines and energy saving techniques on our ships is another critical focus in our research, in order to reduce harmful emissions. Ultimately, this can result in a zero emission and zero downtime ship.

» Electrics

Damen aims to develop zero emissions unmanned vessels. By focussing on energy management, we examine the ways in which electrical systems and electrical energy storage on board work together efficiently. The objective is to create an 'optimal system of systems' to allow for a modular approach in fully electric ship design. Hardware and software in the Loop (HiL/SiL) analysis is used to test and optimise systems at an early stage.

» Automation

Technological developments set the path towards remote control and autonomous ships. We continuously investigate seamless integration of machinery and navigation automation. Exploration of sensing technology and assessment of situational awareness will lead to increased levels of automation in the near future.

» Sound & vibration

Understanding the physics of sound and vibration is critical in meeting today's needs for a safe and comfortable working environment on board and thus sustainable shipping. We develop prediction models for silent ships, both on board as well as underwater. Damen is one of very few shipyards to perform its own measurements with our Class accepted system for underwater radiated sound measurements.

» Advanced solutions for multiple sectors

Damen has specialised programmes to cater to the particular needs of the dredging and naval sectors. Our extensive knowledge of sand-water mixture behaviour places our research department alongside the world's leading design offices of dredge pumps and other dredging equipment. Being a key player in the Dutch naval ship-building cluster, Damen Naval aims its RD&I efforts at developing high-end ships for navies around the world.





» Market

Damen is active across the entire spectrum of maritime industries. From harbours and terminals to offshore support, from dredging to renewable energy, and from superyachts to defence and security.

» A solution for every situation

Within each of the sectors in which we operate, Damen strives to deliver flexible, versatile vessels to meet the diverse requirements of our customers. This versatility applies also to our standardised vessel portfolio. Through the application of a range of proven, modular solutions we are able to deliver vessels that do exactly the job you need them to do.

» Engineering

Whether designing cutting-edge new vessels or improving our tried and tested existing product range, Damen's dedicated team of more than 1,000 engineers strives for progress and the highest possible quality.

» Materials

We consistently apply the highest quality of materials to the vessels we build, in steel, aluminium or composite. Together with our designs and generations of RD&I, the high standard of materials we use provides the foundation for the quality of our vessels.

Damen has been building ships since 1927, when it first started in the Netherlands. Today, the Damen Shipyards Group operates shipyards all over the world and has delivered over 7,000 vessels.

In the early 1970s, Kommer Damen introduced the Damen standardised shipbuilding concept.

The unique approach to shipbuilding practiced by Damen provides customers with the fastest possible delivery of proven, reliable vessels at competitive prices.

» Global coverage

From humble beginnings in the Netherlands, Damen now operates shipyards all over the world, ensuring that, wherever our clients are, we are always close by.

» Building for stock

Building standardised vessels in series enables Damen to keep its products in stock. For customers this means that they can take delivery of their new vessel in record time.

» Sales network

Like our customers, our sales network is international. From our headquarters in the Netherlands our sales teams cover the entire globe. Additionally, we operate regional sales offices in key locations throughout the world.

Design & newbuild

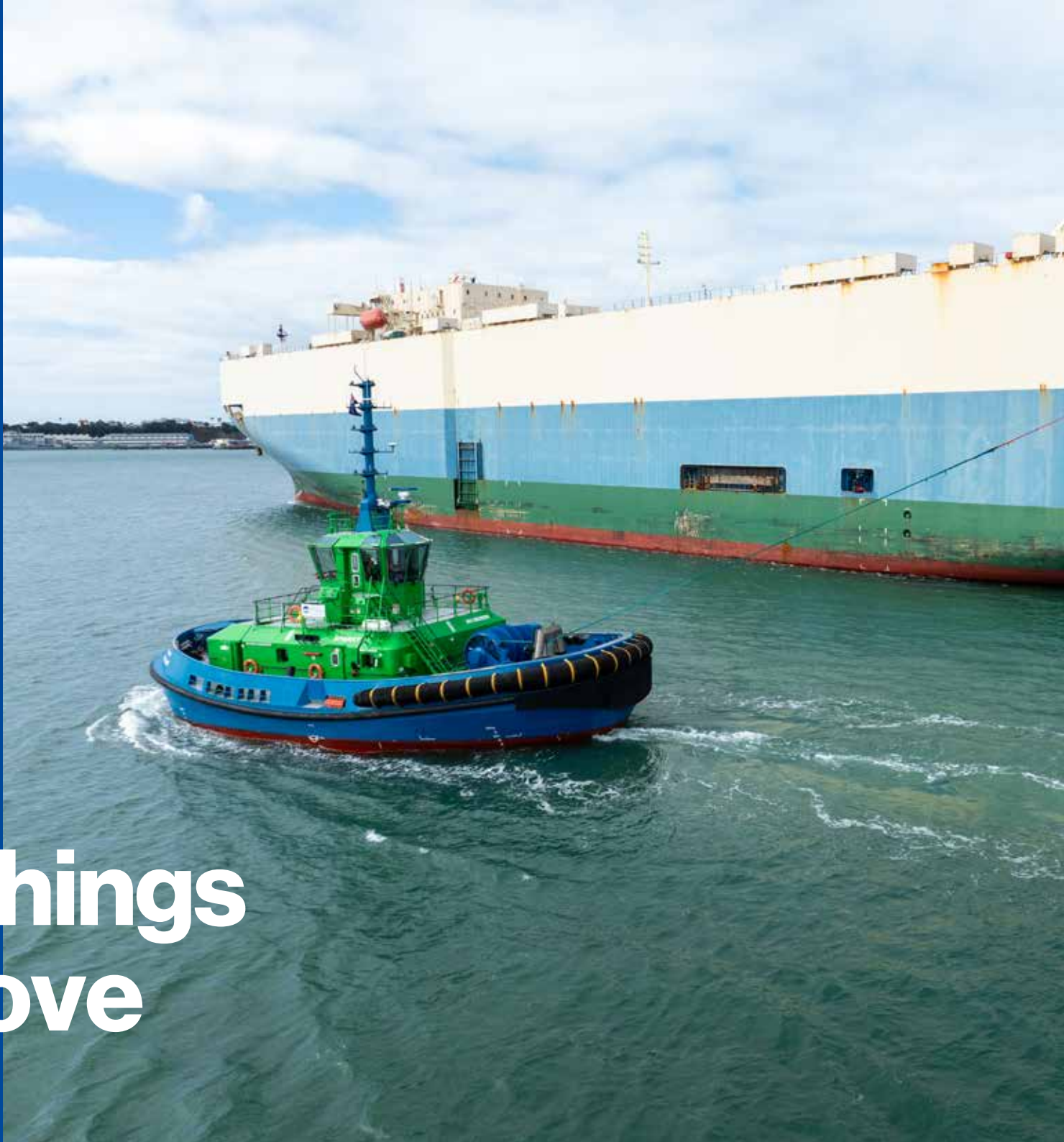


Damen has delivered vessels for operations in harbours and terminals since our beginnings. Damen vessels of today benefit from generations of experience and lessons learnt.

Our vessels have continued to evolve, maintaining relevance for the modern port. They're focused on sustainability, too. Harnessing cutting-edge innovation and digital connectivity, we are preparing our vessels for a cleaner future.

HARBOUR & TERMINAL

Keeping things on the move



Tugs

Damen tugs embody a mix of new designs and proven technologies, placing the future on a solid foundation. Our offer combines safety and sustainability with excellent performance, reliability and high value over the vessel's lifecycle.

- › Electric Tugs
- › Fuel Flexible Tugs
- › Azimuth Stern Drive Tugs
- › Reversed Stern Drive Tugs
- › Ice Class Tugs
- › Stan Tugs

Workboats

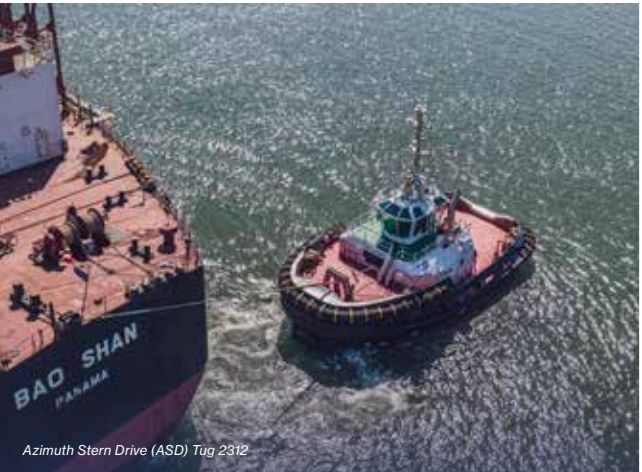
Damen's workboat range is diverse, with a wide ranging scope that includes pilotage, construction and maintenance capabilities, as well as dredgers to keep harbours accessible and create new berthing capabilities.

- › Utility Vessels
- › Multi-Purpose Vessels
- › Multi Cats
- › Shoalbusters
- › Pushbusters
- › Cutter Suction Dredgers
- › Trailing Suction Hopper Dredgers
- › Water Injection Dredgers

Support vessels

To guarantee optimum versatility, our portfolio includes a range of support vessels with the capacity to work in many arenas, including harbours and terminals.

- › Stan Tenders
- › Stan Pilots
- › Stan Pontoons
- › Multi-Purpose Pontoons
- › Spill Pontoons
- › Transshipment Crane Barges
- › Stan Bunker Barges
- › Stan Hopper Barges
- › Dredgers
- › Search & Rescue Vessels
- › Fire Fighting Vessels
- › Modular Jetties
- › Floating Dry Docks
- › Modular Floating Dry Docks



Azimuth Stern Drive (ASD) Tug 2312



Azimuth Stern Drive (ASD) Tug 2111



Stan Pilot 1905



Multi Cat 3515



Reversed Stern Drive (RSD) Tug 2513



Trailing Suction Hopper Dredger (TSHD) 2500 Port & Maintenance



Azimuth Stern Drive (ASD) Tug 2811



Cutter Suction Dredger (CSD) 500

As the world looks increasingly at the potential of renewable energy, offshore projects continue to have an important role. Damen's solutions, including those developed with partners, aim to cover the broad range of duties encountered in the offshore wind industry.

OFFSHORE WIND

Energising the future



Installation

A range of practical vessels designed to perform their specialist wind farm construction related duties.

- › Utility Vessels
- › Anchor Handling Tug Suppliers
- › Fast Crew Suppliers
- › Research Vessels
- › Cable Laying Vessels
- › Offshore Carriers
- › Multi Cats
- › Pontoons & Barges
- › Offshore Freighters
- › Service Operations Vessels
- › Heavy Lift Vessels
- › Multibusters

Maintenance

Once a wind farm is operational, keeping the energy flowing is essential. To that end, Damen offers a range of products to facilitate both scheduled and emergency maintenance requirements, swiftly and safely.

- › Fast Crew Suppliers
- › Utility Vessels
- › Service Operations Vessels
- › Multi-Purpose Vessels
- › Multi Cats
- › Multibusters

Support

A selection of vessels to support wind farm operations, including versatile workboats.

- › Utility Vessels
- › Shoalbusters
- › Multi Cats
- › Pontoons & Barges
- › Crane Barges
- › Multibusters



Floating Offshore Wind Support Vessel 400 Concept



Offshore Carrier (DOC) 8500



Fast Crew Supplier (FCS) 2710 Hybrid



Multibuster 8020



Multi Cat 3713



Fast Crew Supplier (FCS) 2710



Utility Vessel (UV) 3911



Offshore Carrier (DOC) 8500

Damen's comprehensive Offshore Energy portfolio has a strong focus on both safety and performance. We have developed our offshore-related product range in close cooperation with our customers and knowledge partners within the industry.

The result is an offering covering everything from survey to construction, through production and maintenance to decommissioning.

OFFSHORE ENERGY

Sophisticated safety, reliability & performance



Survey & exploration

A sophisticated range of vessels with the capabilities to perform a range of surveys, including seismic, hydrographic and oceanographic.

- › Research Vessels
- › Seismic Research Support Vessels
- › Cable Laying Vessels

Construction

A diverse array of vessel types offering solutions for projects including subsea construction, towage, crew supply and accommodation.

- › Utility Vessels
- › Anchor Handling Tug Suppliers
- › Platform Supply Vessels
- › Offshore Support Tugs
- › Inspection, Repair & Maintenance Vessels
- › Construction Support Vessels
- › Service Operations Vessels
- › Pipe Laying Vessels
- › Pontoons & Barges
- › Floating Cranes

Production

To support the goal of any energy project, Damen's portfolio provides a multi-faceted selection of vessels to cover everything from well stimulation to accommodation.

- › Fast Crew Suppliers
- › Inspection, Repair & Maintenance Vessels
- › Buoy Laying Vessels
- › Oil Spill Response Vessels
- › Well Stimulation Vessels
- › Offshore Accommodation Vessels
- › Safety Standby Vessels
- › Pontoons & Barges

Decommissioning

The Damen Decommissioning Series specialises in three core areas – topside decommissioning, platform removal and subsea cleaning.



Platform Supply Vessel (PSV) 5000 IRM



Platform Supply Vessel (PSV) 3300



Fast Crew Supplier (FCS) 5009



ROV Support Vessel (RSV) 8318



Fast Crew Supplier (FCS) 5009



Buoy Laying Vessel 8317



Fast Crew Supplier (FCS) 7011



Service Operations Vessel (SOV) 9020



Multibuster 8020

Damen has a well-established reputation in the delivery of defence and security vessels. Damen Naval, for example, has nearly 150 years' naval experience, resulting in more than 400 successful ship deliveries. The Damen Defence & Security portfolio offers vessels stretching from 7 to 200 metres and features exceptional examples of seakeeping, speed and reliability.

DEFENCE & SECURITY

Securing our seas



Combatants

Damen's combatant ships have consistently demonstrated their prowess in action with navies worldwide. Our diverse range includes:

- › Air Defence & Command Frigates
- › Anti-Submarine Warfare Frigates
- › Multi-Purpose Frigates
- › Sigma Multi Mission Frigates
- › Sigma Light Frigates And Corvettes
- › Sigma Fast Combatants
- › Crossovers

Patrol vessels

Covering a spectrum from fisheries protection to piracy prevention, Damen's patrol range comprises:

- › Offshore Patrol Vessels Coast Guard
- › Offshore Patrol Vessels Military
- › Inshore Patrols/Stan Patrols
- › Fast Crew Suppliers Patrol
- › Interceptors
- › Rigid Hull Inflatable Boats

Amphibious series

Bridging naval and land operations, Damen's amphibious portfolio supports diverse scenarios, from military activities to disaster relief efforts.

- › Custom Built Amphibious Ships
- › Enforcer Landing Platform Docks
- › Landing Ships
- › Landing Craft

Auxiliaries

Defense and security extend beyond combat and, for that reason, Damen offers a versatile series of auxiliary vessels.

- › Custom Built Naval Auxiliaries
- › Joint Support Ships
- › Logistic Support Vessels
- › Multi-Purpose Support Ships
- › Hydrographic Survey Vessels
- › Multi-Role Auxiliary Vessels
- › Multi-Role Aviation Training Vessels
- › Sail Training Vessels
- › Tugs



Offshore Patrol Vessel (OPV) 1900



Joint Logistic Support Ship



Multi-Purpose Support Ship (MPSS) 7000



Fast Crew Supplier (FCS) 4008



Ocean-going Patrol Vessel



Multi Role Auxiliary Vessel (MRAV) 1600



Landing Craft Vehicle Personnel (LCVP) 1604



Interceptor 1503



Air Defence and Command Frigate



Rigid Hull Inflatable Boat (RHIB)

A part of Damen since 1991, Damen Yachting has grown into the largest superyacht facility in the Netherlands. Combining Damen's professional shipbuilding experience with Amels' luxury yachting expertise, Damen Yachting is the master yacht builder behind Amels superyachts, Xplorer expedition yachts, Yacht Support vessels and major refits.



YACHTING

Luxury experiences without parallel



Refit & Warranty

Discover 25 years of non-stop, first-class refit experience at Damen Yachting. The refit team maintains and updates both Amels yachts and all other brands.

Masters of Time

Amels offers superyachts of the absolute highest quality and finish, both true one-off Full Custom yachts or yachts from the innovative Amels Limited Editions range with fast delivery and high customisation.



Infinite Adventures

Xplorers are the world's leading long-range luxury expedition yachts with outstanding capability to enjoy the world's most spectacular and remote destinations, combining the best of the Amels luxury superyachts range with Damen's high-tech shipbuilding know-how.



Unlimited Possibilities

Superyacht owners take their support vessels from the purpose-built Yacht Support range all over the world to complement their yachts – providing helicopter, dive, security and other tailor-made solutions.



With its Dutch roots, Damen has a natural insight into water management. We combine this with a listening ear to gain an in-depth understanding of your operations. With this, we are able to tailor our proven, standard dredgers and dredging components to your needs. Following this approach, Damen is proud to support dredging contractors all over the world.

DREDGING

Shaping the world



Dredgers

Damen's dredger range is diverse, from stationary modular dredgers to self-propelled Trailing Suction Hopper Dredgers, fit for maintenance, marine aggregate and capital dredging projects. The standard dredger range can be customised effortlessly using the wide scope of our available options.

- › Cutter Suction Dredgers
- › DOP Dredgers
- › Trailing Suction Hopper Dredgers
- › Marine Aggregate Dredgers
- › Dredger Crane Barges

Dredging systems

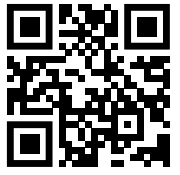
Many in-house designed dredging components are available, either as standalone products, or integrated into fit-for-purpose dredging tools as complete dredging systems.

- › DOP Pumps
- › Trailing Suction Pipes
- › Booster Stations
- › Water Injection Dredgers
- › Dredge Pumps
- › Dredge Valves
- › Dredging Components
- › Dredging Instrumentation

Support vessels

Providing support to the dredging industry is in the DNA of Damen's workboat portfolio, stretching back to the earliest days of standardised shipbuilding.

- › Shoalbusters
- › Multi Cats
- › Stan Tugs
- › Stan Pontoons
- › Modular Pontoons
- › Stan Tenders
- › Pushbusters
- › Stan Hopper Barges
- › Split Hopper Barges



Marine Aggregate Dredger (MAD) 3500



Trailing Suction Hopper Dredger (TSHD) 2000



RSD-WID 2915



DOP Dredger 250



Trailing Suction Pipe (TSP) 500



Cutter Suction Dredger (CSD) 450



Booster Station (BS) 500 Electric



Multi Cat 1004



Trailing Suction Hopper Dredger (TSHD) 1000



DOP Dredger 200

The needs of each public transportation service are unique. Therefore, we tailor our approach to your requirements. We provide not only a vessel in tune with your needs, but a comprehensive support package designed to ensure your success.

PUBLIC TRANSPORT

Connecting people in comfort



Passenger ferries

For people travelling on the waterways Damen offers a range of safe, comfortable City Ferries, Water Buses and Fast Ferries.

- › Fast Ferries
- › Water Buses
- › City Ferries

Passenger/Car ferries

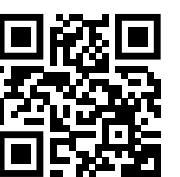
The portfolio features vessels from small passenger ferries to large ferries that can also carry vehicles.

- › RoPax Ferries
- › Fast RoPax Ferries
- › Modular Ferries
- › Road Ferries (Double Ended)

Support

Besides ferries of all kinds, Damen can deliver jetties, docking facilities and link spans to fully optimise your public transport infrastructure.

- › Modular Jetties
- › Link Spans
- › Landing Platforms
- › Mooring Pontoons
- › Charging stations



RoPax Ferry 6716



Ferry 2306 Electric



Road Ferry 6819 Electric



Road Ferry 13022



Fast Ferry 4212



Ferry 3508



Fast Ferry 4212



Road Ferry 8117 Hybrid



Modular Ferry 3012



Landing Pontoon

Our seagoing transport vessels pair the experience of years in operation for our clients with cutting-edge innovation. The result is a range of vessels offering flexibility, high quality, and excellent loading capabilities.

The vessels also feature a wide range of options for increased efficiency and sustainability, such as hybrid PTO PTI, space fore and aft for batteries, improved shore connection capabilities, preparation for wind assisted ship propulsion, and preparation to sail on 100% bio-diesel, and a wide range of options for increased efficiency and sustainability.

SEAGOING TRANSPORT

Versatility on the waves



Seagoing cargo vessels

Our cargo vessels can work in all kinds of waters worldwide. These versatile ships provide efficient loading for any type of dry, project, or bulk cargoes.

- › Combi Freighters
- › Combi Coasters
- › Container Feeders
- › Offshore Freighters
- › Stan Landers
- › RoRo Vessels
- › Stan Pontoons

Tankers

Our tankers are ideal for the transportation of a diverse range of liquid cargoes.

- › Oil Tankers
- › Chemical Tankers
- › Shallow Draught Tankers
- › Liquefied Gas Carriers
- › Stan Tankers
- › Bunker Barges

Supporting offshore logistics

Many of the vessels in our portfolio have the capacity to support offshore logistics operations. These include:

- › Offshore Carriers
- › Heavy Lift Vessels
- › Shoalbusters
- › Pontoons & Barges



Container Feeder 800



Tanker 8000



Tanker 8000 SD



Combi Freighter 5000



Liquefied Gas Carrier 6300



Combi Freighter 8200



Heavy Lift Vessel 1800



Offshore Carrier (DOC) 8500

Concordia Damen is the world's leading builder of vessels tailor-made for operating on rivers and other inland waterways. Whatever the application, Concordia Damen has a solution. And whether the customer is in Northern Europe or South America, we will work with them to ensure that they have the vessels that meet all their requirements.

Concordia Damen achieves this by listening to and learning from its clients, taking their experiences and local knowledge and combining them with its expertise and the latest innovations in shipbuilding technology. Concordia Damen is committed to maximising the lifetime sustainability of its vessels while minimising the total costs of ownership for its customers.

INLAND SHIPPING

Maritime craftsmanship for the hinterland



Inland vessels

Concordia Damen offers a range of inland waterway vessels based around hybrid power sources driving electrical propulsion systems. Customers can choose from a variety of solutions designed to reduce emissions including those using dual fuel, hydrogen and LNG energy sources.

- › Dry Cargo Vessels (container and bulk)
- › Tankers (chemical and mineral)

Pushers

Concordia Damen has extensive experience in the design and build of inland waterway pushers, both for pushing barges and for harbour and manoeuvring operations.

- › Convoy Pushers handling up to 50,000 tonnes dwt
- › Harbour Pushers

River cruise

Concordia Damen has set a new standard for inland river cruising comfort and sustainability. Its next generation vessels have features including hybrid propulsion systems with zero-emissions battery drives and best-in-class hotel power management.

- › Four-deck River Cruisers up to 450 pax
- › Canal River Cruisers from 80 up to 175 pax
- › Day Cruise Vessels

Inland transport

Concordia Damen offers a range of cargo transport solutions for inland waterways. Whether a vessel is for operations on narrow canals or the largest rivers, Concordia Damen has proven solutions to meet any requirement.

- › Class I: Channel vessels up to 38m
- › Class II: Channel vessels from 55 to 70m
- › Class II: Channel vessels from 80 to 86m
- › Class IV: Rhine vessels from 86 to 135m
- › Class Vb: Convoys up to 280m
- › Class VI: Rhine max vessels up to 135m

Class-approved vessels are available in both tanker and dry cargo configurations.

Innovation

Concordia Damen is recognised as a leading force in pushing the boundaries of innovative and sustainable shipbuilding. All its vessels feature the latest advances in hull design and low-emission propulsion systems.

- › Hydrogen propulsion
- › Battery powered
- › Optimised hulls for minimum resistance

Concordia
DAMEN



CDS Tanker 110



ICTA Tanker 120-1750



CDS Pusher 2010



CDS Dry Cargo 110



A-Rosa Sena

Damen offers a comprehensive range of pontoons and barges that enjoy a reputation for flexibility, high quality, excellent seakeeping and attractive pricing. As well as standard designs to facilitate speed of delivery, we also provide customised models to meet specific requirements. Our focus is the provision of the best possible solutions for our customers, whatever their needs.

PONTOONS & BARGES

Engineered functionality



Stan pontoons

Sturdy vessels built to proven designs for the toughest conditions and engineered to be loaded to the maximum. Plug & play options and standardised lengths per beam size.

- › Stan Pontoons
- › Ice Class Pontoons
- › Shallow Draught Pontoons
- › Modular Pontoons

Crane barges

Tailor-made floating cranes to meet operational requirements.

- › Transshipment Crane Barges
- › Heavy Lift Crane Barges
- › Dredger Crane Barges
- › Crawler Crane Barges
- › Custom Built Crane Barges

Custom built pontoons and barges

In close collaboration with clients and project partners we design pontoons and barges for special purposes to meet particular specifications.

- › Accommodation Barges
- › Mooring Pontoons
- › Spill Pontoons
- › Water Maker Barges
- › Module Offloading Pontoons
- › Submersible Barges
- › Floating Docks

Hopper barges

A diverse range of box shaped Hopper Barges with prepared options, as well as Split Barges.

- › Hopper Barges
- › Split Barges

Bunker barges

Barges for transport or storage of fuels, fresh water or other kinds of liquids.

- › Bunker Barges
- › Storage Barges



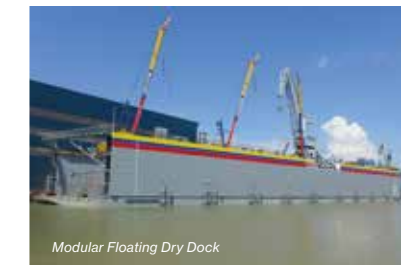
Stan Pontoon 9127



Crane Barge 6324



Stan Pontoon 14040



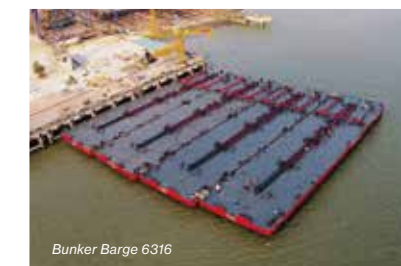
Modular Floating Dry Dock



Stan Pontoon 4111



LR 1600 at a Stan Pontoon 7120



Bunker Barge 6316



Crane Barge 4518

To date, we have delivered over 200 fishing vessels. Damen's fishing portfolio is diverse, covering a wide range of applications and methods. Our vessels are developed in close cooperation with customers and designed to fish in the most economical and environmentally sustainable way possible.

FISHING

Blending innovation with tradition

Fishing vessels

A range of vessels covering a broad scope of fishing operations.

- › Beam Trawlers
- › Twin Riggers
- › Fly Shooters
- › Stern Trawlers
- › Shrimp Trawlers
- › Purse Seiners
- › Long Liners
- › Factory Trawlers
- › King Crab Fishers
- › Fish Collecting Vessels

Shellfish dredgers

Especially designed for work in shallow waters, while maintaining excellent seakeeping behaviour.

- › Mussel Dredgers
- › Oyster Dredgers
- › Razor Shell Dredgers

Research

Vessels to support and perform various research operations, including seismic, hydrographic, oceanographic and fishery surveys.

- › Fishery Research Vessels



Factory Trawler



Beam Trawler



Stern Trawler



Twin Rigger/Flyshooter



Beam Trawler



Crab Catcher



Mussel Dredger



Oyster Dredger



Razor Shell Dredger



Fishery Research Vessel

The growth of the aquaculture industry is significant in many countries presently and looks set to continue into the future. Damen supports the safe, clean development of a reliable industry, both inshore and offshore, with standard-setting solutions.

AQUACULTURE

Feeding the future



Fish handling operations

Our portfolio includes vessel designs for the transport and treatment of fish.

- › Live Fish Carriers
- › Utility Vessels
- › Fish Harvesting Vessels
- › Stan Pontoons

Infrastructure installation, maintenance and removal

Damen's workboat heritage ensures our solutions for heavy duty and daily aquaculture operations are robust, safe and reliable, both inshore and offshore.

- › Multi Cats
- › Stan Pontoons
- › Utility Vessels
- › Stan Tugs

Support and transport

A number of standard vessels from the Damen portfolio can offer support services such as feed supply, crew transport and towage.

- › Feed Carriers
- › Fish Feed Barges
- › Combi Freighters
- › Fast Crew Suppliers
- › Stan Tugs
- › Stan Tenders
- › Stan Pontoons
- › Crane Barges



Multi Cat 2712



Fish Feeding Vessel 3300



Landing Utility Vessel (LUV) 2208



Multi Cat 2712



Live Fish Carrier



Aquaculture Support Vessel 2409



Fast Crew Supplier (FCS) 2710



Combi Coaster 2400

Damen works with maritime authorities and vessel owners and operators to provide the products they need to safeguard the environment. We have a wide range of vessels on offer, covering fire fighting, pollution control, patrol activities and research duties.

SAFETY & CONTROL

Ensuring safety at sea



Emergency response

Safety is of paramount importance. This is why Damen has developed a range of vessels to safeguard life and the environment. Highly effective and economic propulsion systems are combined with dedicated equipment to ensure safety and rescue capabilities.

- › Oil Spill Recovery Vessels
- › Multi-Purpose Vessels
- › Buoy Laying Vessels
- › Safety Standby Vessels
- › Water Making Barges

Search & Rescue

Damen's experience in seakeeping performance is put to use in lightweight, manoeuvrable, Search and Rescue Vessels that can get quickly to the scene of emergency and take people to safety.

- › Search & Rescue Vessels



Search and Rescue (SAR) 1906



Stan Patrol 4207



Stan Patrol 5009



Oil Recovery Vessel 8313



Utility Vessel (UV) 3911



Oil Spill Response Vessel (OSRV) 1050



Multi Purpose Vessel (MPV) 8116



Offshore Patrol Vessel (OPV) 2400

Damen Civil provides a range of maritime construction solutions and services covering the interface between ship and shore. We combine the strength of global standards with local personnel and content. This philosophy of knowledge transfer results in practical solutions creating and expediting the development of local industry, skills and employment.

CIVIL

A bridge from ship to shore



Shipyards

Damen Civil is active in the development of new and existing shipyards for customers worldwide. It aims to create the best possible facilities, assisting clients to improve their performance capabilities. Close cooperation between Damen Civil and the customer during development, design and construction forms a long-lasting relationship that is in the interests of both parties.

Damen can help you in a number of ways, whether it's constructing a new yard from scratch, or adapting an existing one. From concepts & consultancy to construction, with Damen you have the one-stop solution to bring your shipyard to life.

Docking systems

Damen Civil also has experience with all kinds of docking systems: graving drydocks, floating drydocks, shiplifts, slipways, and boat hoists (marine travelifts) as well as transfer areas widely used at Damen's own shipyards. Damen Civil can assist with the design & engineering as well as the construction of all such docking solutions.

Concepts & Consultancy

Damen Civil offers a wide range of consultancy services. From site surveys to desk studies such market studies, shipyard layout designs, and CAPEX calculations, to a full feasibility package; it all starts with a concept.

Civil Works

As a partner to its clients, Damen Civil provides technical assistance or acts as a turnkey contractor, designing and constructing the entire project. Damen Civil always considers local circumstances and aims to work with the local population as far as possible. And, as a supplier of vessels all over the world, Damen Civil has become expert in transporting all types of materials and equipment direct to the construction site. Damen offers an extensive range of civil and architectural works related to shipyards. This includes large halls, workshops, jetties, docking systems, offices, etc., all fully compliant with local regulations and conditions, and built with Damen quality.

- › Floating Drydocks
- › Graving Drydocks
- › Marine Travel Lifts
- › Slipways
- › Ship Lifts
- › Transfer Areas
- › Outfitting Quays
- › Jetties/Finger Piers
- › Production and Repair Halls
- › Warehousing And Workshops
- › Sheds and Storage
- › Offices and Training Centres



As well as being renowned for the production of standardised vessels, Damen has an excellent track-record in the production of customised, one-off vessels, designed exactly to each client's specific requirements. With our experience across all maritime sectors, we offer the flexibility to meet your needs, whatever they may be.

SPECIALS

In a class of their own



Sail training vessels

Steel clippers for the best nautical and navigational sail training possible.

- › Stad Amsterdam
- › Shabab Oman II
- › Cisne Branco
- › Polang 8

Hybrid RoRo ferries

LNG-Hybrid, 149-metre RoRo Ferries.

Icebreakers

Advancing scientific, strategic, environmental and economic interests for the Australian Antarctic Division.

- › RSV Nuyina

Multi-purpose pontoons

Customised, semi-submersible load-handling solutions.

- › Terra Marique

Nuclear cargo vessels

Secure cargo transportation.

- › Sigrid

Fishery inspection, surveillance and research vessels

Protection of fishing stocks in Angolan territorial waters.

- › Baía Farte

Multibusters

All-round, flexible, stable and robust workboats for both offshore and inshore operations.

Multi-role Aviation Training Vessels

Diverse training and support duties for the Royal Australian Navy.

- › Sycamore

Fire Fighting vessels

Special design for the canals and low bridges in Amsterdam, the Netherlands.

- › Jan Van Der Heyde IV



Sail Training Vessel 2630



Multi Purpose Pontoon 8017



Fishery Research Vessel 7417



Nuclear Cargo Vessel 1600



Multibuster 8020



RoRo Ferry 129626



Multi-role Aviation Training Vessel 2300



Fire Fighting vessel 1804



Antarctic Supply Research Vessel (ASRV)

MAIN NEWBUILD YARDS

» Damen Shipyards Gorinchem | Head Office & Damen Shipyards Hardinxveld



» Damen Song Cam Shipyard



» Damen Dredging Equipment



» Albwardy Damen



» Damen Naval



» Damen Yichang Shipyard



» Damen Shipyards Cape Town



» Damen Shipyards Antalya



» Damen Shipyards Maaskant



» Damen Shipyards Galati



» Damen Yachting

Damen Shiprepair



Damen Shiprepair has over 300 years of experience in providing maintenance, repair, conversion and refit services to vessels of almost every kind, all over the world, from its strategic yard locations, at sea or in port. We carry out over 1,500 projects annually, applying the Damen core values of craftsmanship, flexibility, reliability, client focus and a desire to exceed all expectations.

» Our service

Shiprepair yards offer ship owners a comprehensive range of services, from standard drydockings for scheduled maintenance or damage repair right up to extensive refit and conversion projects. Our dedicated sales team can assist you in preparing your specification.

» Anywhere, anytime

Shiprepair operates eleven shipyards all over the world. This includes yards in NW Europe as well as yards in the Caribbean and the Middle East. Our facilities vary in scope from those with full size drydocks and covered facilities, to smaller yards more practical for coastal and inland vessels. Two of our drydocks are amongst the biggest in the world.

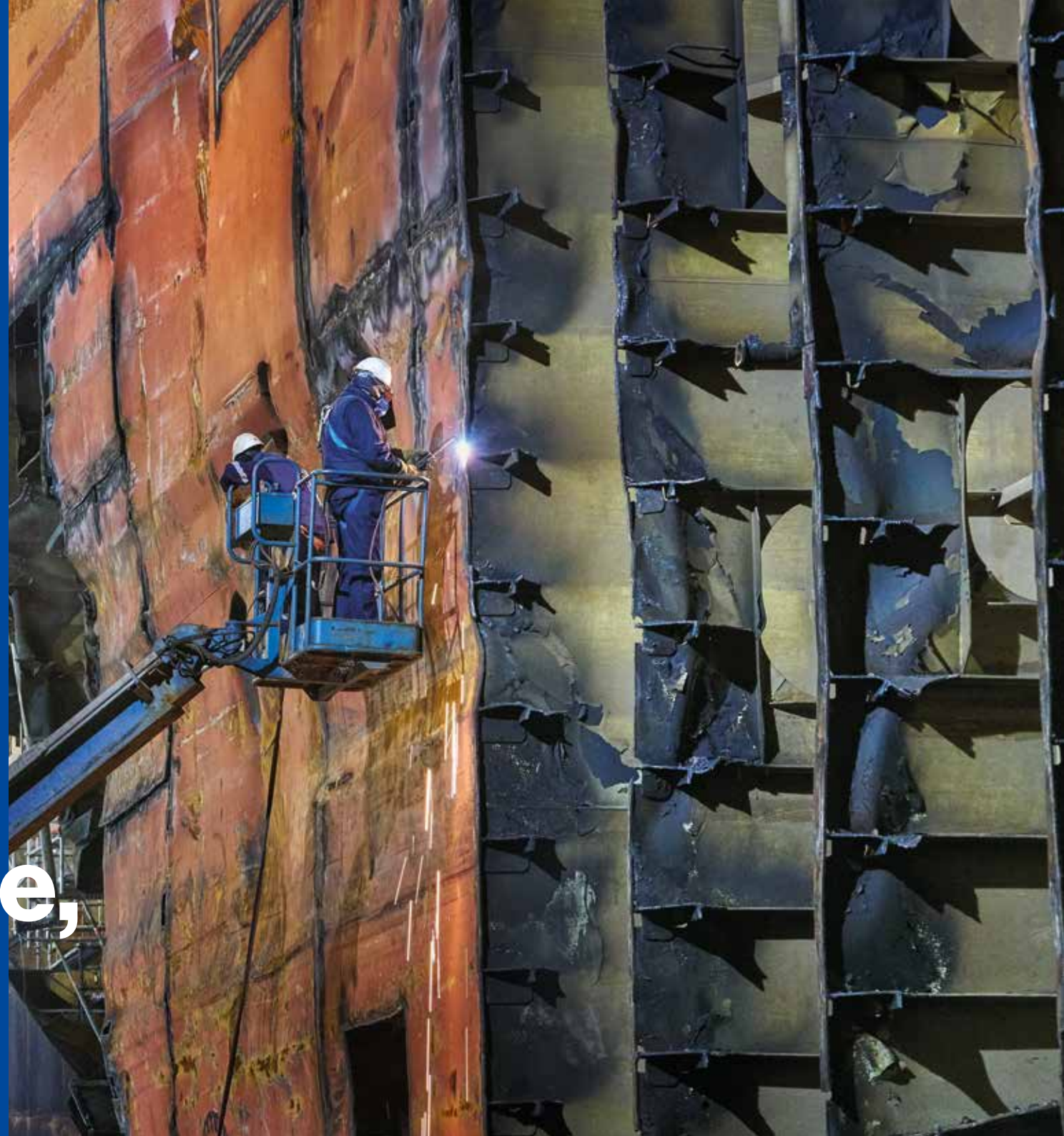
» One stop shop

We are able to design, engineer, procure and execute all kinds of projects – from a small pipe repair on the deck of a tug to the complete refit of a jack-up rig and everything in between.

Our reputation for repair and maintenance is based on delivering short lead times, high quality work and minimal vessel downtime. We are well-versed in the maintenance and repair of everything from small vessels to offshore installations. There is always a shiprepair yard nearby and a drydock available for your vessel. Alternatively, our mobile repair squad will come to you.

REPAIR & MAINTENANCE

Anywhere, anytime



» Repair

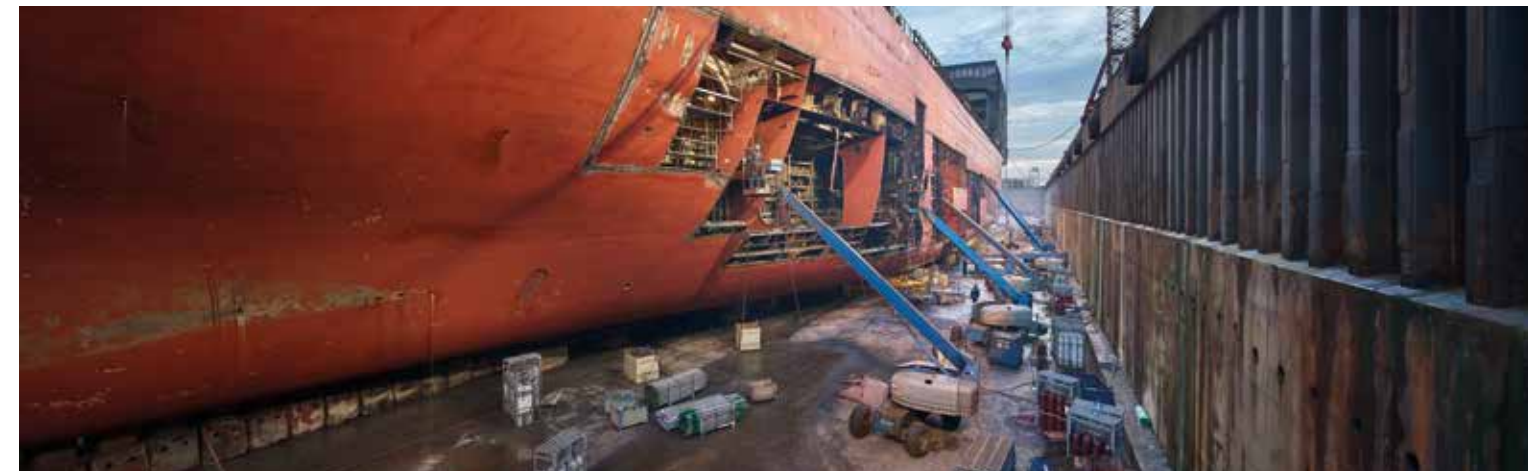
We ensure a quick, safe and reliable service to get you underway again as soon as possible. We have extensive experience of every conceivable type of damage, whether it be caused by collision, flooding, fire or malfunctioning equipment.

» Maintenance

Maintenance is crucial in order to meet a vessel's operational requirements and comply with classification rules and regulations. We are able to take on the most challenging projects in the shortest possible time frames. Projects are planned within a fixed schedule, to the highest quality standards and according to budget.

» Harbour & Voyage

Damen Shiprepair Harbour & Voyage (DSHV) was established in 2015 to complement the work of our yards. Operating from multiple locations around the world, DSHV offers 24/7, 365 day a year global repair, modification and training services to enable optimal uptime of your fleet.



We have years of experience, highly skilled project teams and extensive facilities for carrying out the design, engineering and execution of all kinds of conversion and refit projects. From container ships to FPSOs and from dredgers to offshore support vessels, our Shiprepair yards are there to carry out the most complex projects.

CONVERSION, REFIT & DECOMMISSIONING

Bringing new life & purpose to your vessel



» Conversion

We can provide you with reliable, efficient and innovative conversion services. Through our experience and passion we have successfully converted countless vessels. Benefit from our lessons learned – from the conversion of a container carrier into a pipe-laying vessel to the conversion of a jack-up drilling rig into an accommodation platform.

» Refit

Every ship ages. A refit can turn back the hands of time and give you a completely refreshed vessel in compliance with the latest regulations and equipped with the latest innovations. We have a long track record of successful refits, lifetime extensions and rejuvenation programmes.

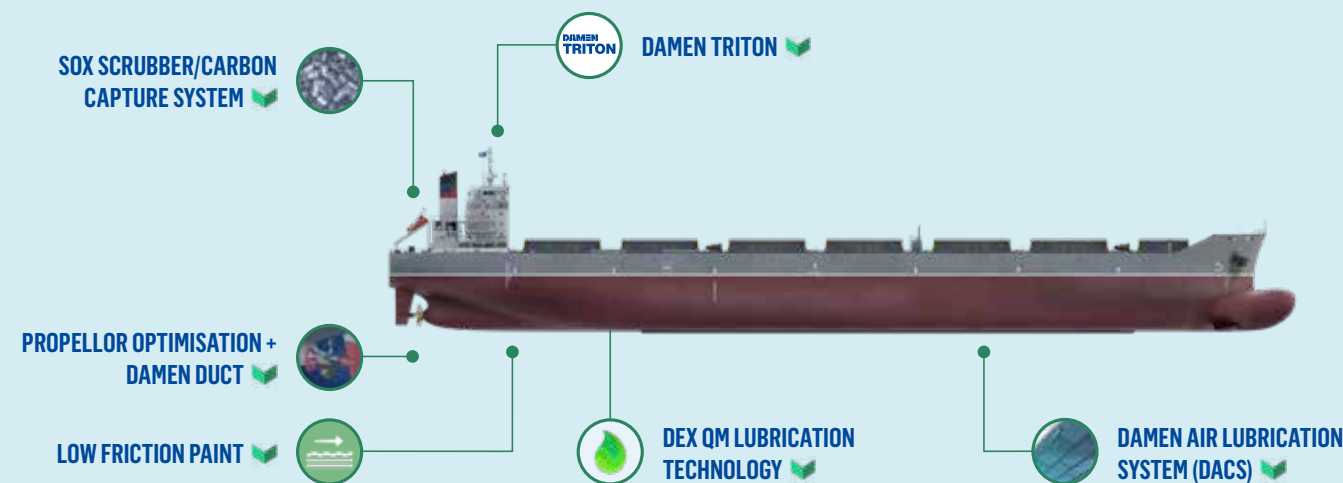
» Decommissioning/disposal

Shiprepair is your secure, reliable partner in the dismantling and recycling of vessels and large offshore structures. Benefit from the knowledge we can offer at various yards, including high-standard health, safety, environment and quality performance for the decommissioning of fixed and floating offshore structures and ship recycling works. Our yard in Rotterdam Botlek holds official EU and Dutch accreditation as a Ship Recycling Yard. Additionally, we are able to handle NORM (Naturally Occurring Radioactive Material).



» Green solutions

We offer a range of solutions to make your vessel more sustainable, reduce emissions, and save fuel. You can save costs and, at the same time, make your vessel future-proof. With current IMO and EU regulations, it's necessary to take action. Damen provides best-in-class solutions to decarbonise your vessel and achieve lower emissions. We offer a unique combination of expertise, proven technology, financial services, and installation support. Moreover, our digital solutions will make fuel consumption reporting very straightforward.



Damen Shiprepair operates from eleven shipyards on three continents and worldwide through our Harbour & Voyage team. Each Shiprepair yard has its own unique history and character. In common, however, is their shared commitment to reliability and high quality.

SHIPREPAIR

Every market,
any vessel



Europe

The Netherlands

- Damen Shiprepair Rotterdam
- Damen Verolme Rotterdam
- Damen Shiprepair Vlissingen
- Damen Shiprepair Amsterdam
- Damen Shipyards Den Helder
- Damen Shiprepair Harlingen
- Damen Shiprepair Oranjerwerf
- Damen Maaskant

France

- Damen Shiprepair Brest
- Damen Shiprepair Dunkerque

Caribbean

- Damen Shiprepair Curaçao

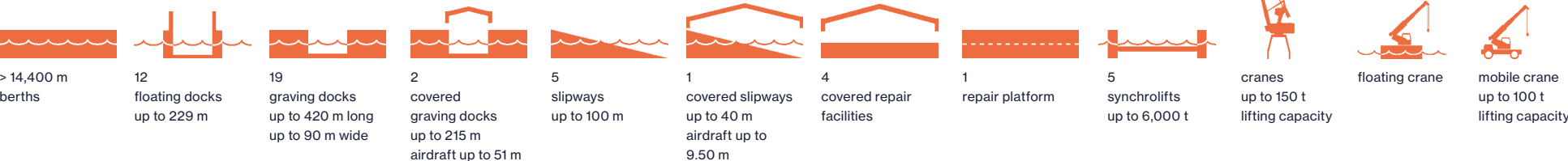
Middle East

United Arab Emirates

- Albwardy Damen

Worldwide

- Damen Shiprepair Harbour & Voyage



MAIN SHIPREPAIR YARDS

» Damen Shiprepair Rotterdam - location Schiedam



» Damen Shiprepair Rotterdam - location Botlek



» Damen Shipyards Den Helder



» Damen Shipyards Maaskant



» Damen Shiprepair Harlingen



» Damen Shiprepair Oranjewerf



» Albwardy Damen Sharjah



» Damen Shiprepair Curaçao



» Damen Shiprepair Dunkerque



» Damen Shiprepair Brest



» Damen Shiprepair Amsterdam



» Damen Shiprepair Vlissingen

Equipment



» Damen Marine Components

Having tailored hardware, software and services in propulsion, manoeuvring and performance is essential for efficient and safe sailing. Damen Marine Components (DMC) designs and manufactures a range of operations-critical systems that significantly improve your vessel's performance and your onboard experience. These include nozzles, winches, controls and steering and rudder systems for any market, such as inland navigation, yachting, defence, fishery, dredging, and short sea.

We design and produce our equipment in our own research and production facilities in the Netherlands, China and Poland with a team of experienced engineers, production staff and sales specialists. As part of Damen Shipyards Group, DMC can base its designs on the performance data of previously built ships – data not normally available to equipment manufacturers. We use this in combination with our in-house experience and ecosystem of ship owners and vessel operators, research institutes and other partners. Together, these form the knowledge-base that underpins our premium product portfolio, which is used by shipyards and shipowners around the world.

» Nozzles

Using our innovative spinning production method we create nozzles up to 7.5 metres in diameter. These nozzles, with only a single weld on the inside, are stronger, of better quality, and faster to manufacture than conventional multiple weld nozzles. DMC's Optima nozzle has been the best-running nozzle type for pushers, tugs,

icebreakers, dredgers, coasters, fishing vessels, and workboats since 1998. In 2023 we re-engineered it. The updated Optima generates up to 3.4% more forward and backward thrust, offers reduced sound levels, and significantly reduces vibrations.

» Steering systems

DMC offers a complete range of hydraulic steering systems for vessels with up to eight rudders. No matter what class a ship may be, we can provide standardised solutions generating up to 1,600 kNm torque, and custom solutions for heavier systems. Our compact systems are renowned for their durability and performance, including our ICE Class manoeuvring systems.

» Rotor Manoeuvring System (RMS)

Using an RMS contributes significantly to the sustainability of any type of inland navigation vessel (newbuilds and refits). Due to the improved course stability (especially in strong crosswinds) and reduced drag in shallow waters, ships outfitted with an RMS can sail more efficiently with less steering movements. For an empty, unloaded vessel, this leads to significant fuel savings and lower emissions.

» Winches

From towing winches to anchor winches, deck equipment from DMC is designed to keep on doing its job under the most extreme conditions, and with minimal maintenance.

» Rudders

A safe course depends on reliable rudders. Our rudder portfolio covers the entire spectrum, and we have suitable rudders for all seas, rivers and canals.

From 1 to 100 m², we supply rudders in all sizes for all ship types. Options are available to enhance the performance or to extend the lifespan of our rudders, such as our Asymmetric Rudder Technology (ART™) and Silent Bulb.

» Flex Tunnel

The Flex Tunnel is a retractable tunnel specifically designed to increase the propulsion efficiency of inland vessels. The vacuum between the tunnel and the nozzle creates a constant water supply to the propeller, which increases a vessel's operational performance when sailing in shallow waters or unloaded. Combined with XR rudders and a Hydro Spoiler, you can further optimise your vessel's operational performance.

» Control & Monitoring

Within DMC Dynamics we design, develop and produce control and monitoring systems for every class of vessel. From rudder indicators and oil quality monitoring sensors to systems that give insights into steering characteristics and CO₂ emissions, DMC Dynamics offers a wide range of continuous and data-driven insights. These digital tools lead to increased safety and efficiency on board any ship.

» Anchors & Chains

Damen Anchor & Chain Factory (AKF) supplies high-quality anchors, reliable chains and custom-built towing equipment. Our large stock ensures that your downtime is kept to a minimum. Our Lloyds approved testing equipment includes four test benches for proof and break loading from 100 to 2,000 tonnes.



Services



Damen Services is the one-stop-shop for your maritime needs. We offer everything to get you going, keep going, and stay ahead. We support you throughout the entire lifecycle of your assets.

Integrated logistics support

- › Reliability, availability and maintainability analysis
- › Reliability centered maintenance analysis
- › Logistic support analysis

Delivery at yard - handover

- › Warranty support
- › My Damen
- › Dedicated support

Getting started

Combined services package

- › Ship delivery
- › Initial spare parts package
- › Vessel operating manual
- › Training
- › Maintenance management solutions

Keeping you going

Long-term service agreement

- › Parts
- › Technical assistance, consultancy
- › Maintenance execution
- › Repair and conversion
- › Refit

» Service Hubs

To respond to your needs locally, Damen Services has been expanding its Service Hub network since it was established in 2014. This local presence enables our skilled engineers to reduce response time significantly.

» Warranty support

Customer satisfaction is of utmost importance to us. Customers can reach out to a dedicated service team 24 hours a day, seven days a week. As well as having access to Damen via our mobile app, customers are visited by a Damen technician, regardless of whether there is an issue or not.

» Getting started

Damen Services is able to tailor its service packages to meet specific requirements. In this way we ensure our customers can begin their operations as soon as we deliver their vessel on location.

» Keeping you going

Downtime is becoming more and more expensive. Damen Services' portfolio enables reduction of downtime, either upfront via taking over the entire maintenance strategy or via quick intervention if a malfunction occurs.

» Innovation & sustainability

Damen Services puts great effort into innovating and responds to the rapidly changing world with the continuous development of our services. This includes an expanding focus on digitalisation and sustainability.



Damen Financial Services



Damen Financial Services (DFS) acts as an investor, asset owner and product developer. With its range of financial and operational services, DFS aims to provide clients with full-service maritime solutions and to create the financial tools necessary to enable Damen's strategic objective of becoming the most sustainable maritime solutions provider.

» Streamline Your Course

With DFS Damen extends its offering beyond the delivery of a vessel, providing financing opportunities as well as operational support.

» Supplier's credit

With this, DFS provides a post-delivery loan for vessels with a construction period of less than twelve months and/or stock vessels.

» Buyer's credit

This financial vehicle is for larger, more complex projects such as vessels with a longer lead time exceeding 12 months.



» LeaseCo

LeaseCo facilitates post-leasing financing for a standard Damen stock vessel.

» DFS Lease

This arrangement facilitates leasing of sustainable maritime assets such as zero and near-to-zero emission vessels.

» Damen Trading

Damen Trading is the specialised sale and purchase broker within Damen. Over the years, Damen Trading has gained extensive experience in vessel brokerage and trade-in services. The result, for customers, is a comprehensive service before, during and after the acquisition of a vessel.

» Joint ventures

For projects requiring close collaboration, DFS is able to participate in joint venture partnerships.



Shoalbuster



Waterbus 2907 Hybrid/Electric



Fast Crew Supplier (FCS) 7011



Azimuth Stern Drive (ASD) Tugs

» **Head Office**
Gorinchem *

» **Newbuild Yards**
Albwardy Damen, United Arab Emirates **
Concordia Damen Shipbuilding *
Damen Dredging Equipment *
Damen Maaskant * **
Damen Naval *
Damen Shipbuilding Rotterdam *
Damen Shipyards Antalya, Turkey
Damen Shipyards Cape Town, South Africa
Damen Shipyards Changde, China
Damen Shipyards Den Helder * **
Damen Shipyards Galati, Romania
Damen Shipyards Gdynia, Poland
Damen Shipyards Gorinchem *
Damen Shipyards Hardinxveld *
Damen Shipyards Koźle, Poland
Damen Song Cam Shipyard, Vietnam
Damen Yachting*
Damen Yichang Shipyard, China

» **Shiprepair Yards**
Albwardy Damen, United Arab Emirates **
Damen Maaskant * **
Damen Shiprepair Amsterdam *
Damen Shiprepair Brest, France
Damen Shiprepair Curaçao
Damen Shiprepair Dunkerque, France
Damen Shiprepair Harbour & Voyage *
Damen Shiprepair Harlingen *
Damen Shiprepair Oranjerwerf *
Damen Shiprepair Rotterdam *
Damen Shiprepair Vlissingen *
Damen Shipyards Den Helder * **
Damen Verolme Rotterdam *

* company based in the Netherlands
** both newbuild and repair activities

» **Service Hubs**

Africa
Damen Services Africa | Cape Town
Damen Services Nigeria | Port Harcourt

Americas
Damen Services Brazil | Rio de Janeiro
Damen Services Canada | Victoria
Damen Services Central America | Panama

Asia & Middle East
Damen Services Bangladesh | Dhaka
Damen Services Middle East | Sharjah | Dubai
Damen Services South East Asia | Haiphong

Australia
Damen Services Australia | Brisbane

Europe
Damen Services Netherlands | Gorinchem
Damen Services United Kingdom | Southampton
Damen Services Germany | Hamburg

» **Supporting Companies**
Bawat Damen *
Damen Anchor & Chain Factory (AKF) *
Damen Cargo Vessels *
Damen Digital Solutions *
Damen Engineering Gdansk, Poland
Damen Green Solutions *
Damen Marine Components *
Damen Marine Components Gdansk, Poland
Damen Marine Components Jiangyin, China
Damen Schelde Marine Services Singapore
Damen Schelde Marine Services Vlissingen *
Damen Technical Cooperation *
Damen Trading & Chartering *
Damen Trading Suzhou, China
Marine Design Engineering Mykolayiv, Ukraine
Marine Engineering Galati, Romania
Knud E. Hansen, Denmark
Niron Staal *

» **Business Cooperations**

Americas
C&C Marine & Repair, United States of America
Cotecmar, Colombia
Astilleros Navales Ecuatorianos (Astinave), Ecuador
ASTIMAR 1, Mexico
Blount Boats, United States of America
Bollinger Shipyards, United States of America
Breau Brothers, United States of America
Conrad Industries, United States of America
Derecor Shipyards, United States of America
Eastern Shipbuilding Group, United States of America
Great Lakes Shipyards, United States of America
GulfShip, United States of America
LaShip, United States of America
North American Shipbuilding, United States of America
Platypus Marine, United States of America
Servicios Portuarios Integrados, Argentina
SDSM, Suriname
Tampa Ship, United States of America
Wilson Sons, Brazil

Asia
189 Shipbuilding Company, Vietnam
Bason Shipyards, Vietnam
Dumas Tanjung Perak Shipyard, Indonesia
Ha Long Shipyard, Vietnam
Khulna Shipyards, Bangladesh
Pha Rung Shipyard, Vietnam
Song Cam Shipbuilding, Vietnam
Song Thu Corporation, Vietnam

Europe
Baku Shipyard, Azerbaijan
Coastal Workboats, United Kingdom

Middle East
Gulf Craft, United Arab Emirates
Karachi Shipyards & Engineering Works, Pakistan

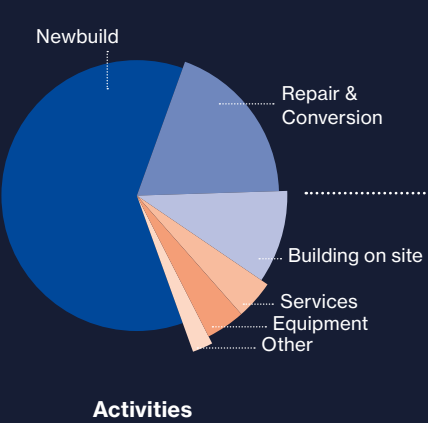
35
Yards Worldwide

200 Vessels in stock
1500 Repair & maintenance jobs per year

150 Deliveries per year
7000 Vessels delivered
1000 Vessels built on site



12 Service Hubs Worldwide
12500 Damen employees
100+ Active in countries



Founded in 1927

DAMEN

Annual Turnover 3,1 Billion Euro

INTEGRATED SERVICE SOLUTIONS

Streamline Your Course

At Damen, we understand that navigating the complex and ever-evolving business landscape can be challenging for our clients. Based on our vision of circular, cradle-to-cradle building, we offer ship-as-a-service concepts, in which you pay for use and not for ownership, as well as a range of financial services tailored to your requirements. In this way we offer integrated services designed to streamline your course during your vessel's lifecycle.

Damen provides a diverse range of services to get you going, keep you going, and let you stay ahead. These include flexible financing, trading in, delivery support, crew training, maintenance services, spare parts and component services, 24/7 emergency support, ship repair, refit and conversion, and even chartering services. Our integrated approach allows us to optimise efficiency, reduce costs, and minimise downtime, ultimately enabling you to focus your core objectives with confidence. Whatever challenge is ahead, you can trust that we will streamline your course.

+31 183 63 99 11
info@damen.com
damen.com



DESIGN | NEWBUILD | EQUIPMENT | SERVICES | REPAIR, CONVERSION & REFIT

Damen Shipyards Group owns all intellectual property rights (including amongst other things copyright) as used in this brochure – © Damen Shipyards Group 2024. No rights can be derived from the information with regard to dimensions, characteristics or performances of any of the products & services shown. Except with the prior express written permission of Damen Shipyards Group, nothing in this brochure and its content may be distributed and/or commercially exploited.

MARKETS

- › Harbour & Terminal
- › Offshore Wind
- › Offshore Energy
- › Defence & Security
- › Yachting
- › Dredging
- › Public Transport
- › Seagoing Transport
- › Inland Shipping
- › Pontoons & Barges
- › Fishing
- › Aquaculture
- › Safety & Control
- › Civil
- › Specials



Transport to Cutter Suction Dredger (CSD) 600



DAMEN

damen.com

BRO-1-0012412