

Stan Tug 1606

STANDARD



PICTURE OF SIMILAR VESSEL

GENERAL

| | |
|-----------------|--|
| Basic functions | Towing, mooring, pushing and survey operations |
| Classification | Bureau Veritas I ✱ HULL • MACH Tug Coastal Area |
| Painting | Epoxy paint system |

DIMENSIONS

| | |
|----------------|-------------------------------|
| Length overall | 16.76 m |
| Beam overall | 5.94 m |
| Depth at sides | 2.54 m |
| Draught aft | 2.25 m |
| Displacement | 90 t |
| Scantlings | Hull 10 mm, sheerstrake 20 mm |

TANK CAPACITIES

| | |
|---------------------|---------------------|
| Fuel oil | 14.2 m ³ |
| Fresh water | 1.1 m ³ |
| Sewage | 0.7 m ³ |
| Bilge water/ sludge | 0.5 m ³ |

PERFORMANCES

| | |
|--------------|---------|
| Bollard pull | 16.0 t |
| Speed | 10.9 kn |

PROPULSION SYSTEM

| | |
|---------------|--|
| Main engines | 2x Caterpillar C18 TA/A |
| Total power | 894 bkW (1216 bhp) at 1800 rpm |
| Gearboxes | 2x Reintjes WAF 264L 4.5:1 |
| Propellers | 2x Kaplan II fixed pitch |
| Nozzles | 2x 1350 mm Van de Giessen "Optima" with stainless steel innerrings |
| Rudders | 2x streamlined double plates |
| Steering gear | Powered hydraulic 2x 45°, with rudder indicator |

AUXILIARY EQUIPMENT

| | |
|--------------------|---|
| Generator set | Caterpillar C2.2 NA, 230/400 V, 20.3 kVA, 50 Hz |
| Alternator 24 V | 2x main engine driven |
| Battery sets | 2x 24 V 200 Ah with changeover, 1x 24 V 80 Ah |
| Alarm system | Engines, gearboxes, bilge alarm, fire detection engine room |
| Bilge pump | Electrically driven Azcue CP-40, 15 m ³ /h at 2.2 bar |
| Fuel oil system | Duplex filters, water separator and emergency stopping oil supply |
| Cooling system | Closed cooling system |
| Water system | Electrically driven fresh water hydropore 24 V |
| Fresh water heater | 230 V, 30 liter |
| Ventilation | Mechanical ventilation in engine room, 10.500 m ³ /h |

DECK LAY-OUT

| | |
|------------------|---|
| Anchors | 2x 80 kg Pool (High Holding Power) |
| Chain | 100 m shortlink, 12.5 mm diameter |
| Anchor winch | Electrical for one anchor |
| Ø Crane | Heila HLM 3-2S 0.5 ton at 6.9 meter |
| Ø Capstan | 1.3 ton at 9 m/min |
| Ø Coupling | 2x manually operated 25 ton each |
| winches/bollards | |
| Towing hook | Mampaey disc type, SWL 250 kN/ 25 ton |
| Life raft | On top deck / Ø second life raft |
| Push bow | Cylindrical rubber fender 380 mm diameter |
| Fendering | Continuous rubber D-fender around hull 200 x 200 mm |

ACCOMMODATION

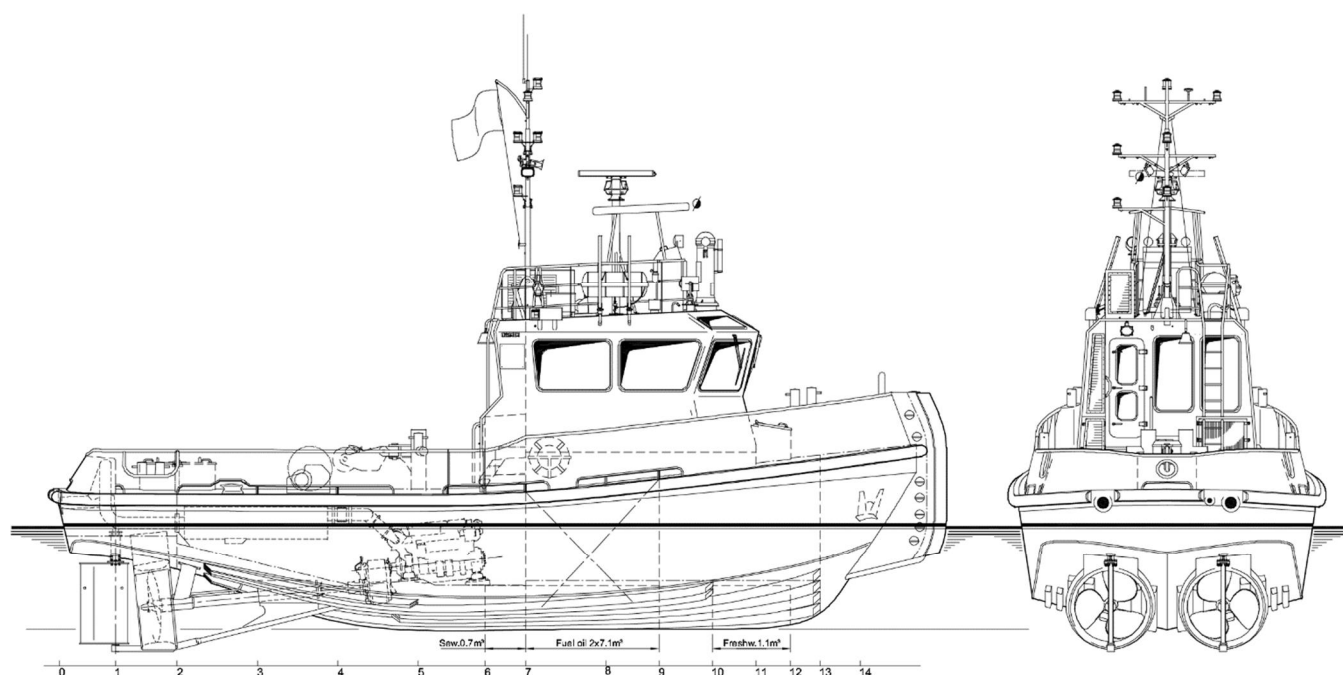
The accommodation is completely insulated and finished with durable modern linings, acoustical ceiling in the wheelhouse and a floating floor. The air-conditioned wheelhouse is fitted with a corner settee with table and a control position. Below deck a galley, sanitary facilities, store and Ø crew cabin for 4 persons are provided. Windows are fitted in aluminium frames.

NAUTICAL AND COMMUNICATION EQUIPMENT

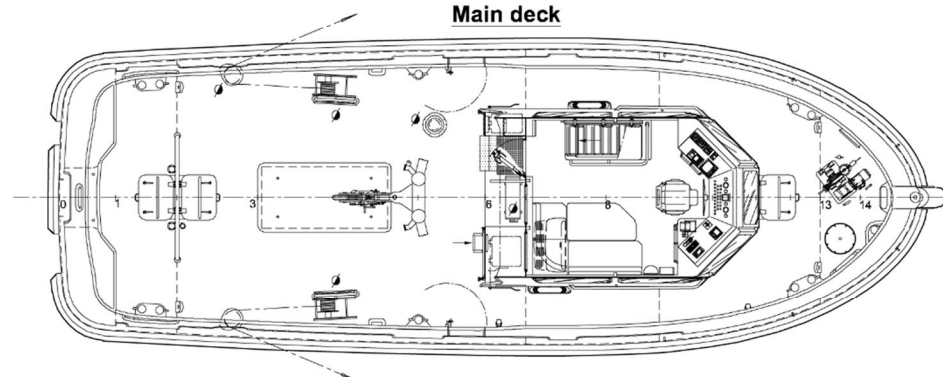
| | |
|-----------------|---|
| Searchlight | Pesch 250 W |
| Horn | Electric Ebuki E90 |
| Radar | Furuno FR-8065 or Furuno FAR 1518-BB |
| Compass | Cassens & Plath, type Kotter |
| GPS | Furuno GP-39 or Furuno GP-170 |
| Echosounder | Furuno FCV-628 or Ø Furuno FE-800 |
| VHF | Sailor Compact 6248 or Ø 2x Sailor Compact 6222 DSC |
| Ø VHF hand-held | 2x Jotron TR-30, GMDSS approved |
| Ø Navtex | Furuno NX-700B |
| Ø AIS | Furuno FA-170 |
| Ø EPIRB | Jotron TRON-60S |
| Ø Sart | Jotron Tronsart |
| Ø GMDSS area 1 | MED approved equipment |

Stan Tug 1606

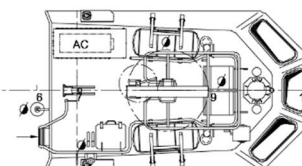
STANDARD



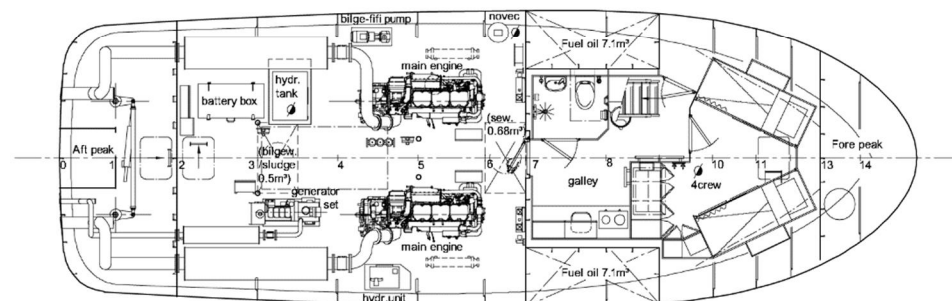
Main deck



Top deck



Below Main deck



DAMEN

Damen.com

© No part of the leaflet may be reproduced in any form, by print, photo print, microfilm, or any other means, without written permission from Damen Shipyards Group