

DAMEN STAN TENDER 1200

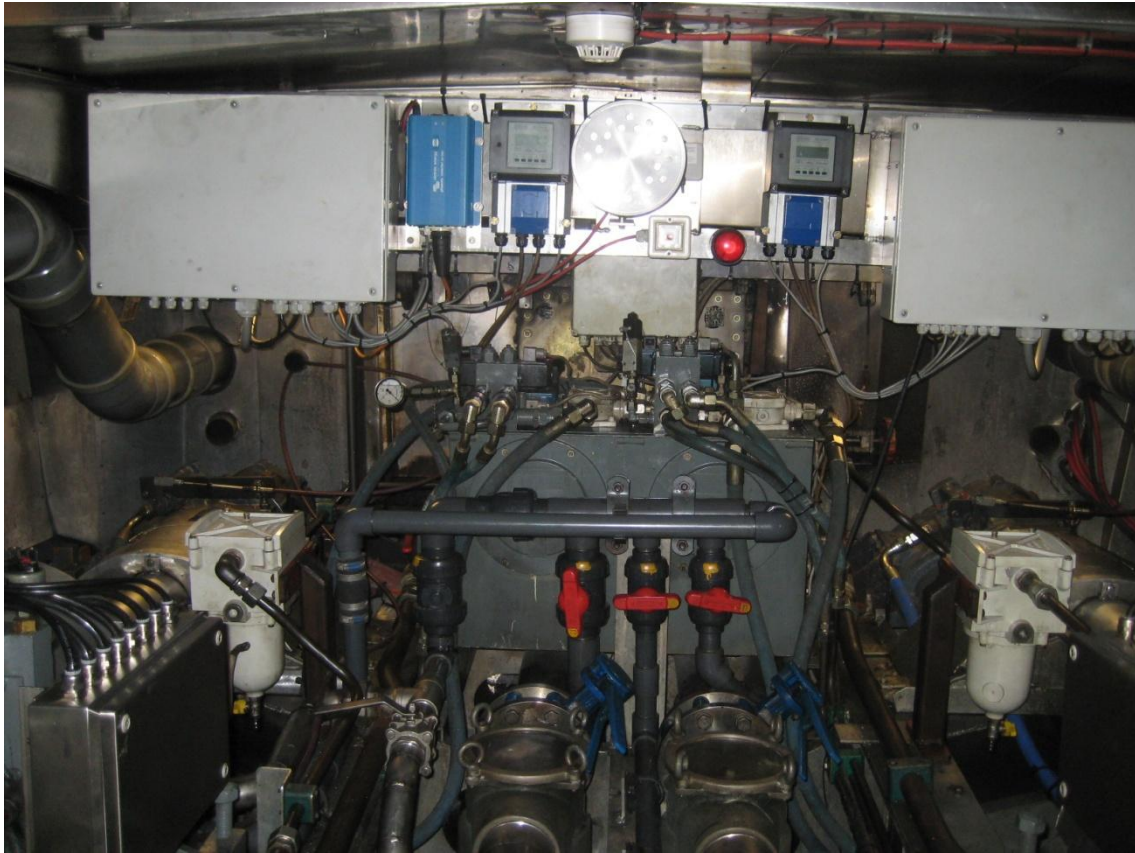
Type	DAMEN Stan Tender 1200
Built	1997, Damen Shipyards, The Netherlands
Dimensions	12,00 x 4,20 x 1,80 mtrs
Draft	1,00 mtr max.
Material	aluminium both hull and superstructure
Propulsion	two fixed pitch propellers
Main engines	2x MAN (SB overhauled 2010, PS overhauled 2012)
Output	800 bhp at 2100 rpm
Speed	25 knots
Gearboxes	2x Twin Disc, type MG 5111 V
Equipment	bilge pump 1x 12,5 m ³ /hr and 1x Gusher 4,5 m ³ /hr
Tank capacities	fuel oil 1,05 m ³
Passenger capacity	for 6 persons
Nav./comm. equipment	turn indicator, 2x VHF, radar
Remark	Vessel is in a good condition.
Position	The Netherlands

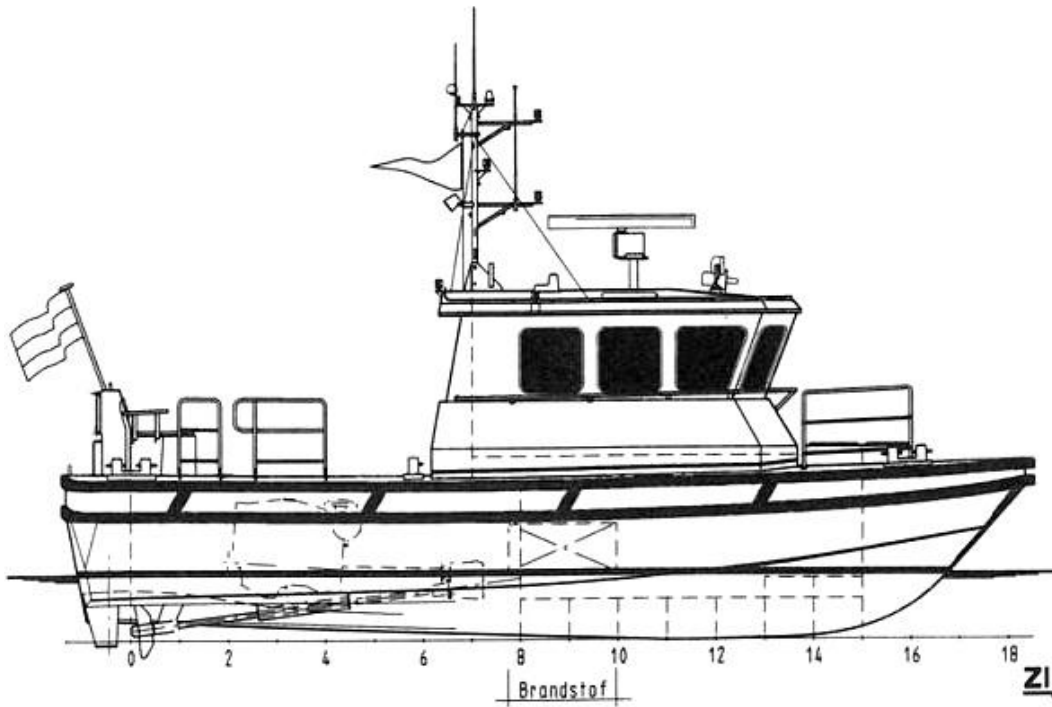




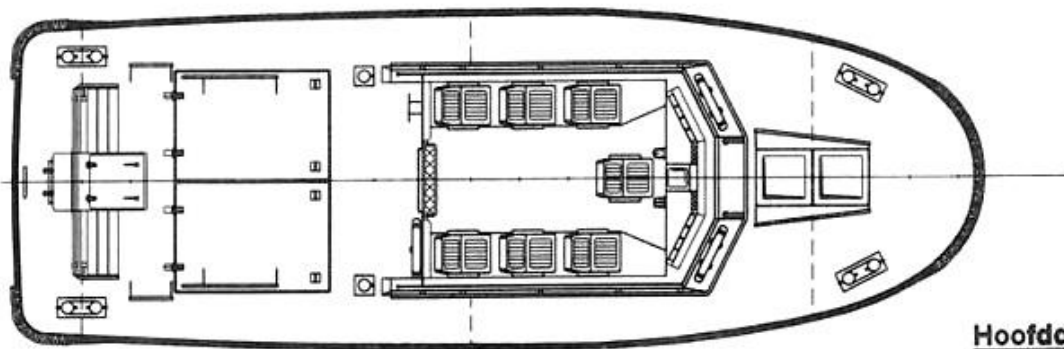




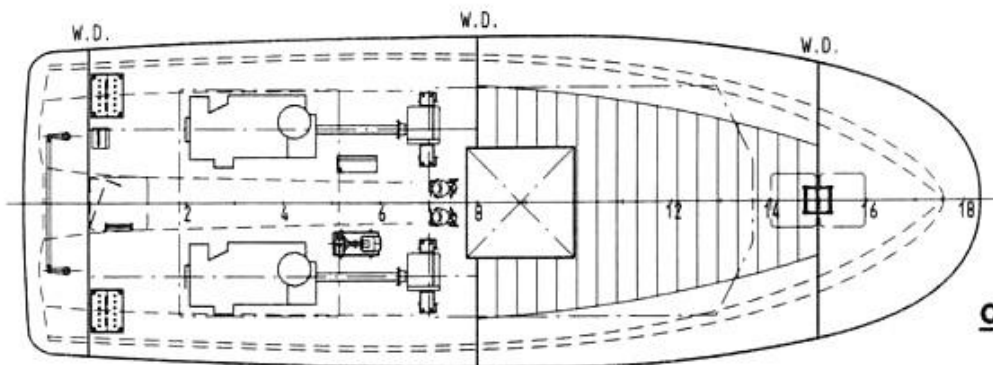




Zijaanzicht



Hoofdek



Onder Hoofdek