

*Tugboat suitable for towing, mooring and firefighting operations.*

|                          |   |
|--------------------------|---|
| Type                     | Reversed Stern Drive Tug 2513   |
| Built                    | 2019  |
| Dimensions               | 24.73 x 13.13 x 4.95 m  |
| Draft                    | 5.50 m aft  |
| Propulsion               | 2x Rolls Royce thrusters, type US 2555  |
| Main engines             | 2x MTU, type 16V 4000 M63L-1A   |
| Output                   | 6008 bhp total at 1800 rpm  |
| Forced ventilation       | 60.000 m <sup>3</sup> /hr   |
| Exhaust emission         | IMO Tier III compliant  |
| Speed                    | ± 12.9 knots ahead<br>± 12.6 knots astern   |
| Bollard pull             | ± 72.6 tonnes ahead<br>± 68.0 tonnes astern   |
| Displacement             | 525 tonnes (98% consumables)  |
| Deck equipment           | Anchor winch, hydraulic 10 m/min.<br>Towing winch, hydraulically driven split drum 31 ts pull up to 11 m/min.,<br>reduced pull up to 38 m/min., 175 ts brake  |
| Fendering                | Cylinder + block bow fender, D-fender side/aft  |
| Generator set            | 2x Caterpillar, type C4.4 TA, 81 kVA, 400 V, 50 Hz  |
| Generator service pumps  | 2x Azcue CA 50/3A 20 m <sup>3</sup> /h at 2.35 bar  |
| Bilge water pump         | Azcue CA 32/0.5 3.6 m <sup>3</sup> /h at 1.1 bar  |
| Fuel pump                | Azcue BR-41-10 12 m <sup>3</sup> /h at 1 bar  |
| Fuel oil purifier        | 2x CJC, PTU3 27/81 3x FA/BLA 27/27  |
| Cooling system           | Closed box cooling system   |
| Fresh water pressure set | Azcue MO-31/10  |
| Hydraulic system         | Double main engine driven pumps   |
| FiFi equipment           | 2 monitors, 1200 m <sup>3</sup> /hr each<br>Fifi pump set Caterpillar C32   |
| Tank capacities          | Fuel oil 77.4 m <sup>3</sup>  |
|                          | Fresh water 10.2 m <sup>3</sup>   |
|                          | Bilge water 6.0 m <sup>3</sup>  |
|                          | Sewage 6.0 m <sup>3</sup>   |
|                          | Dirty oil 2.5 m <sup>3</sup>  |
|                          | Lubrication 2.5 m <sup>3</sup>  |
|                          | Urea 3.0 m <sup>3</sup>   |
| Accommodation            | For 4 persons, completely insulated and finished with durable modern<br>linings, sound absorbing ceiling in the wheelhouse and floating floors.<br>Air-conditioned wheelhouse, accommodation and switchboard room.<br>Accommodation above main deck with a captain's cabin, chief<br>engineer's cabin, one double crew cabin, pantry, mess/dayroom and<br>sanitary facilities. The superstructure is mounted resiliently to reduce<br>noise levels. |
| Nav./comm. equipment     | Radar, compass, autopilot, satellite compass/GPS, echosounder, speed<br>log, 2x VHF, Navtex, AIS, EPIRB, SART, Anemometer.  |
| Class                    | Bureau Veritas I ✱HULL •MACH Tug Unrestricted Service AUT UMS<br>INWATER SURVEY COMF-NOISE3, COMF-VIB 3 Fire Fighting Ship 1<br>- Waterspray  |







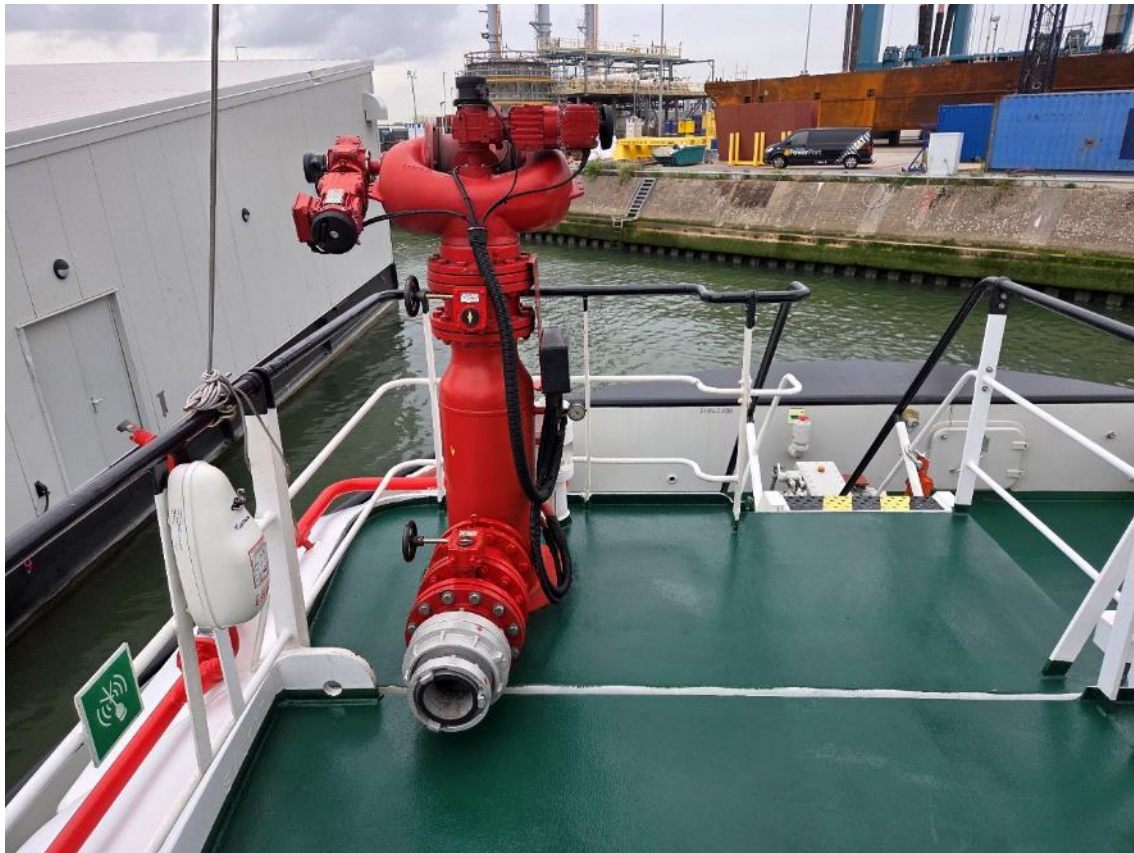


















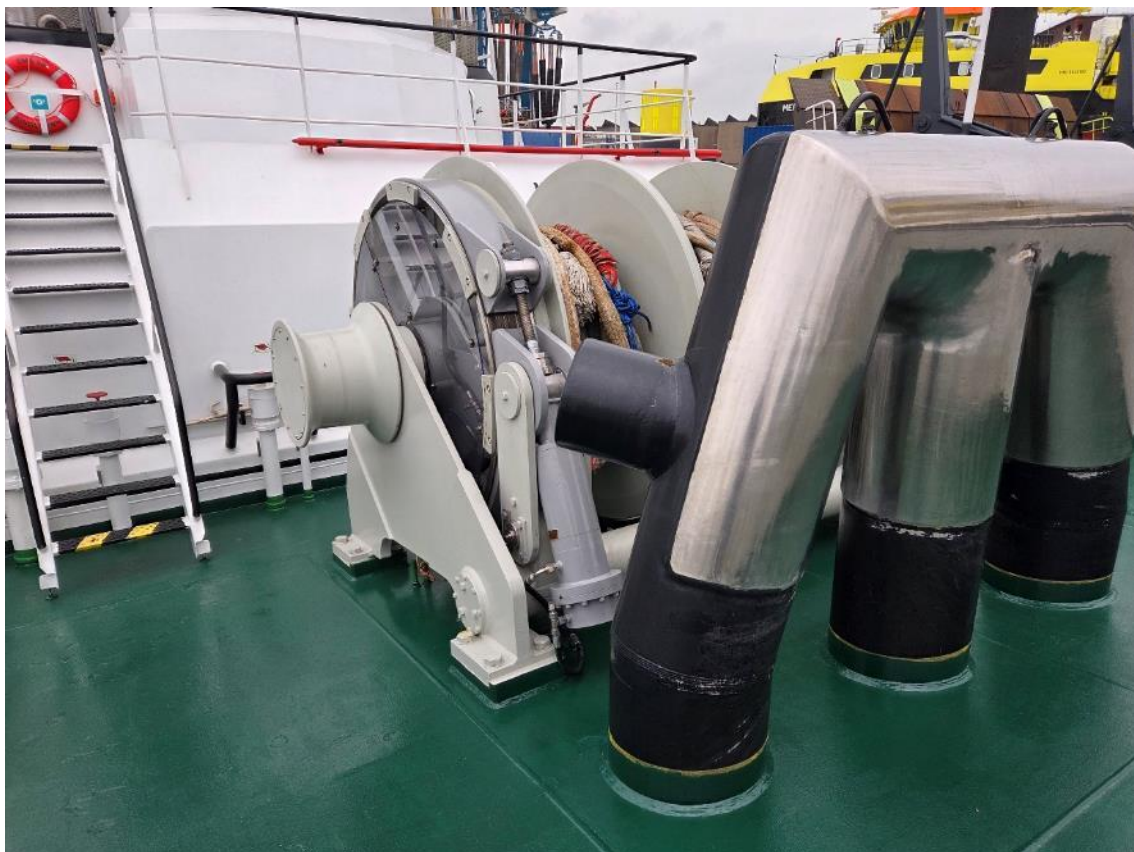




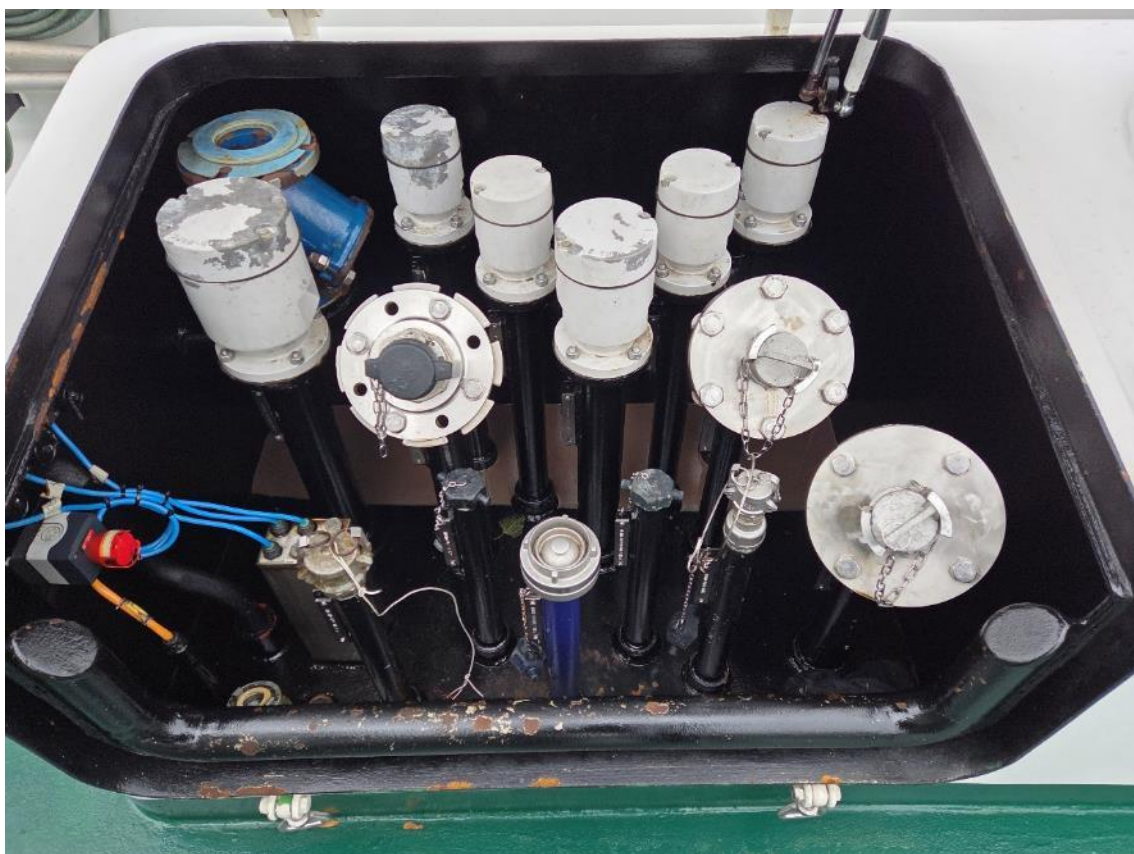




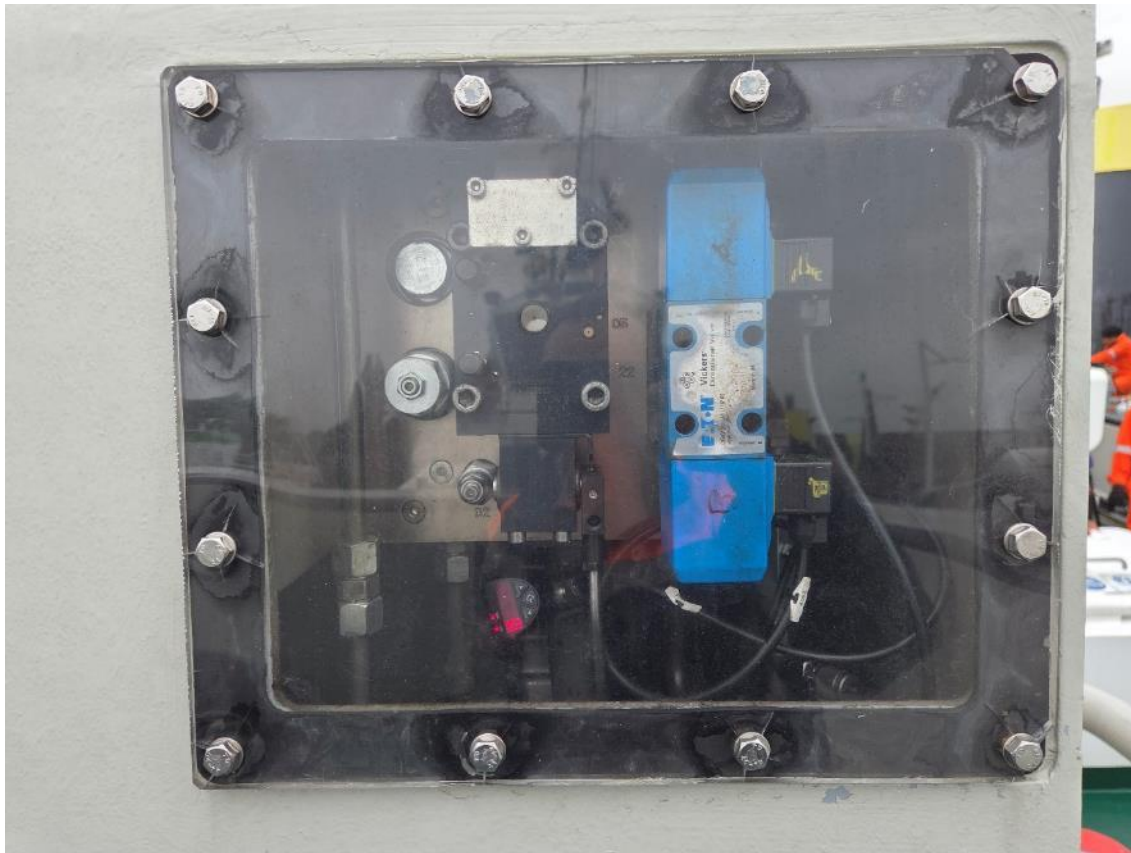




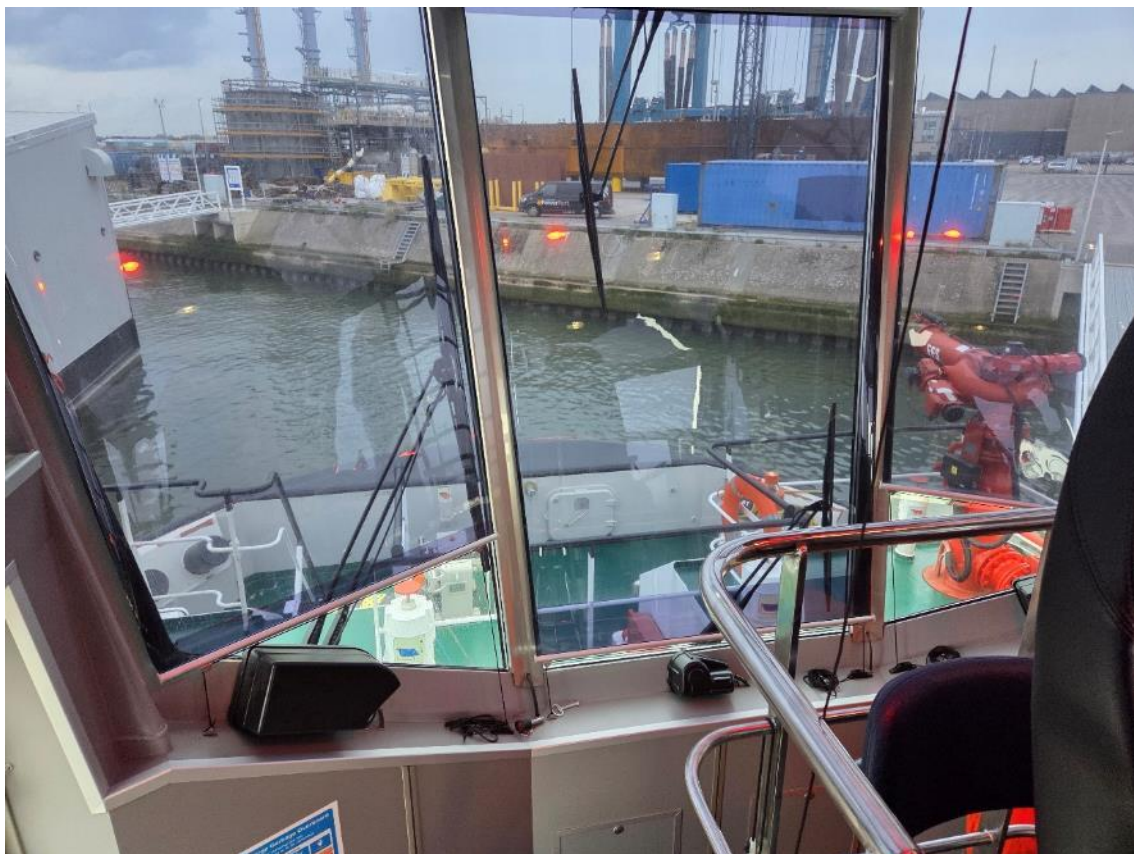














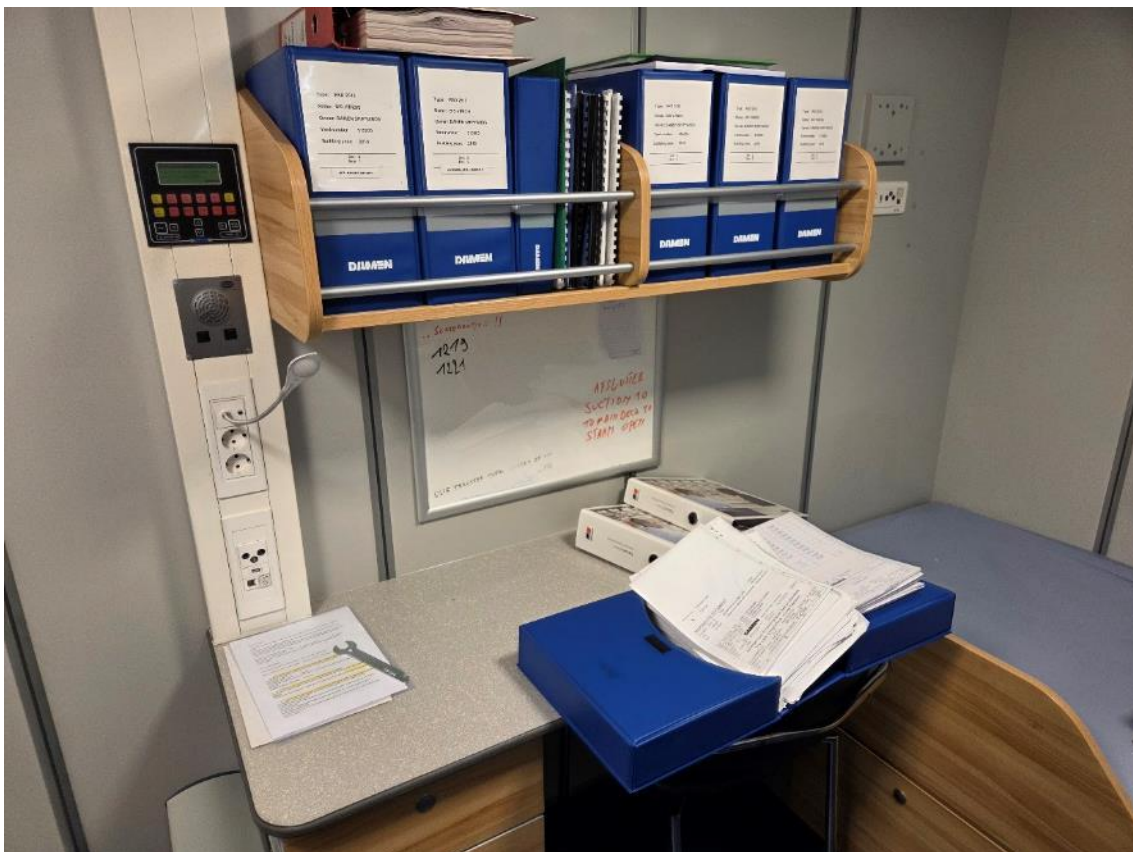










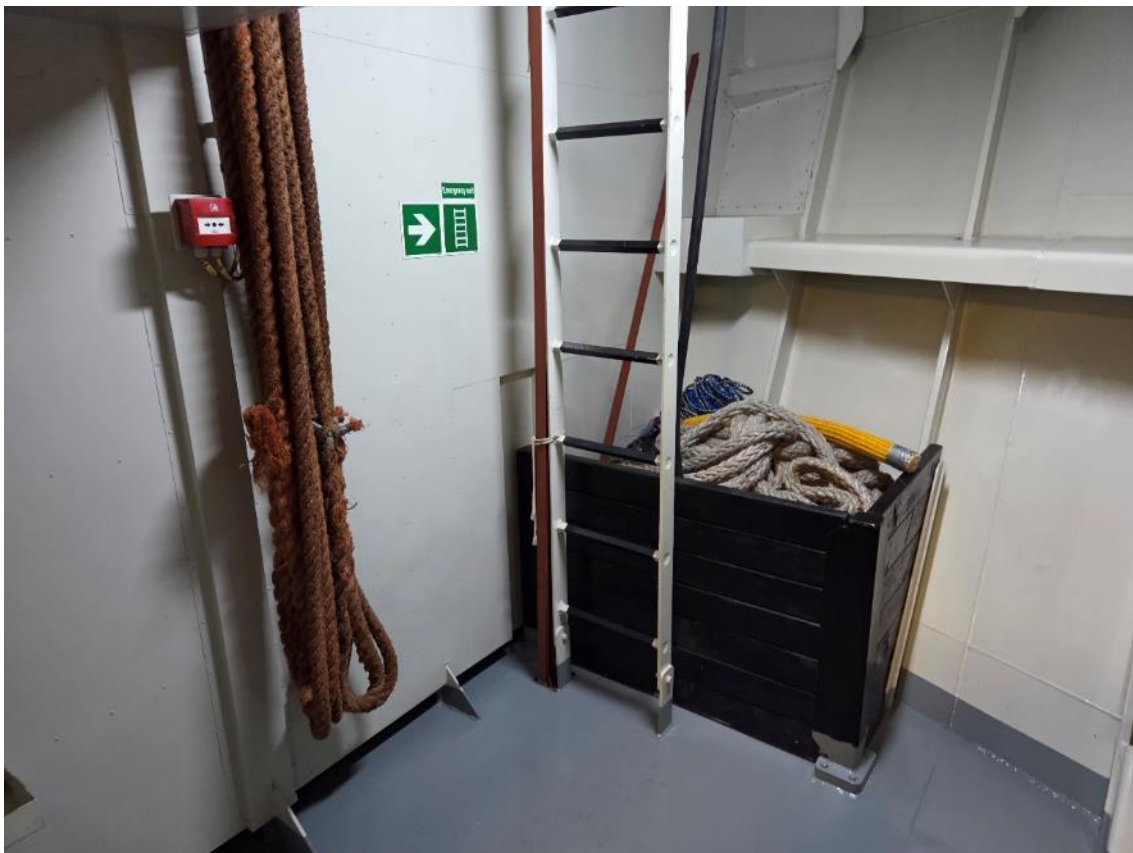












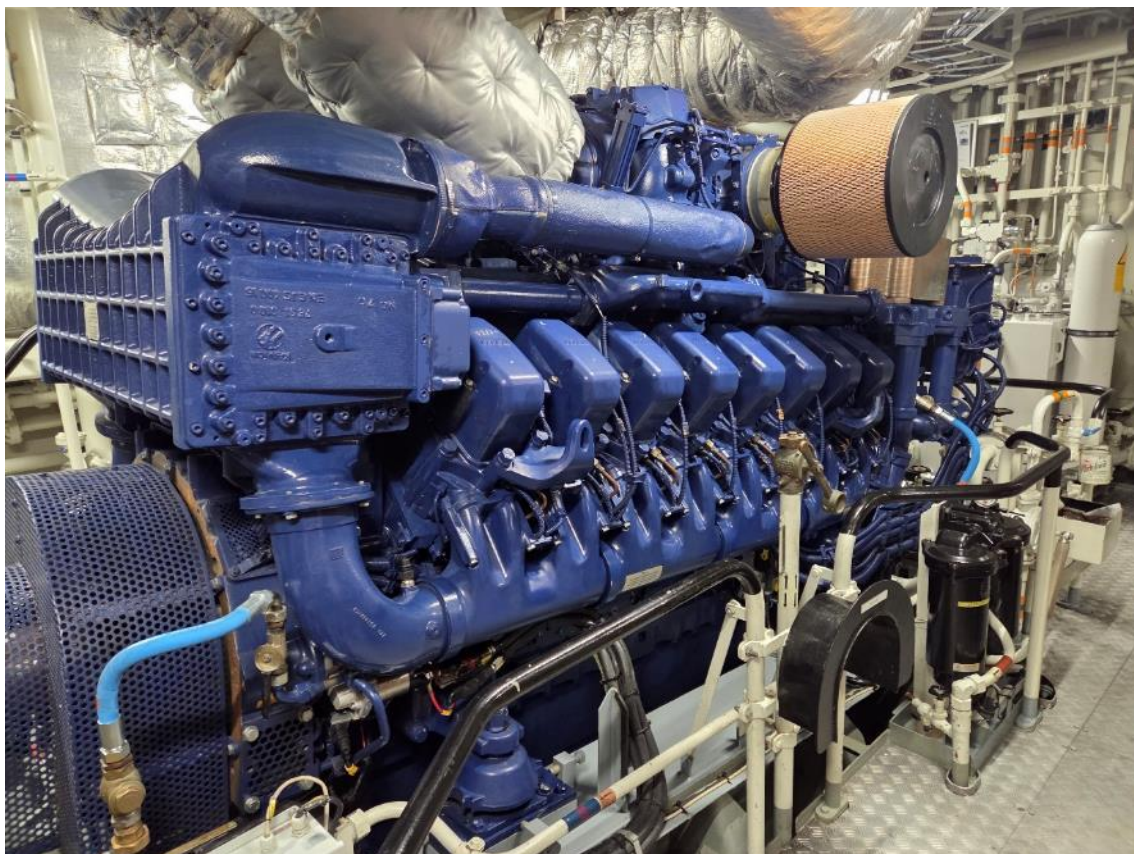




























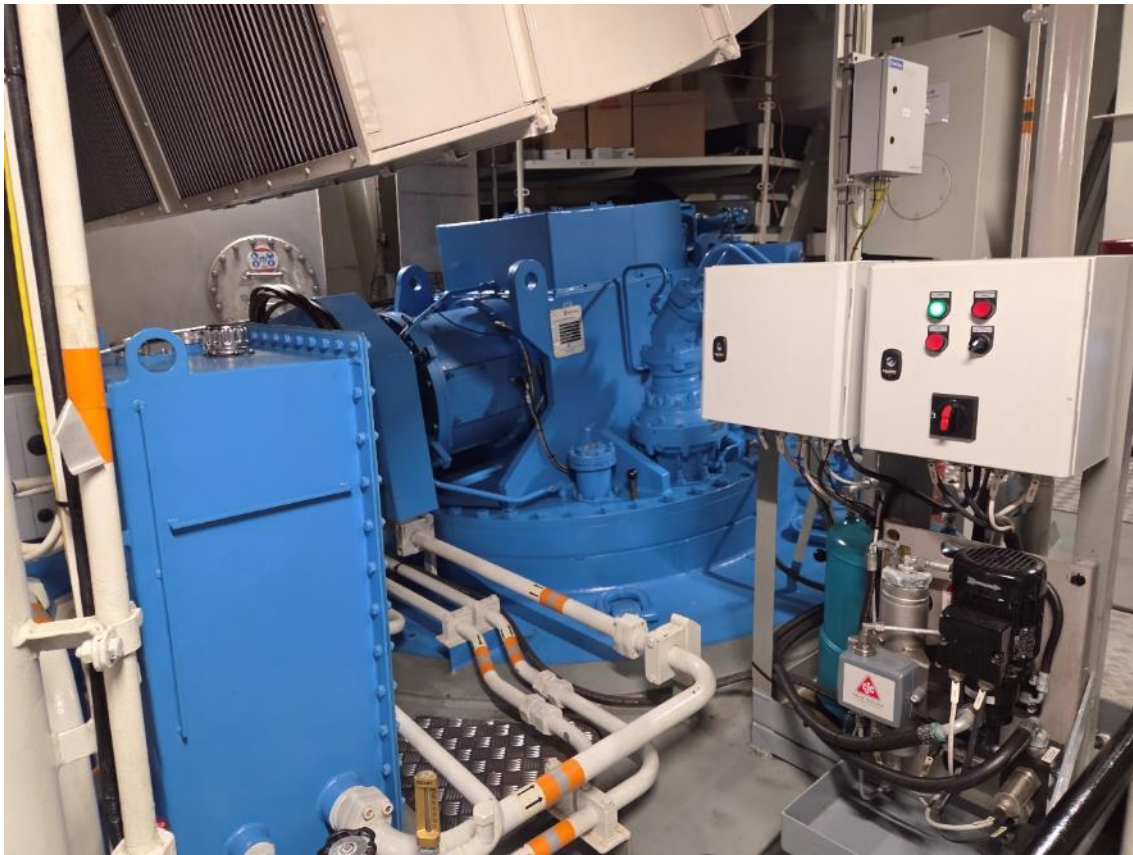




















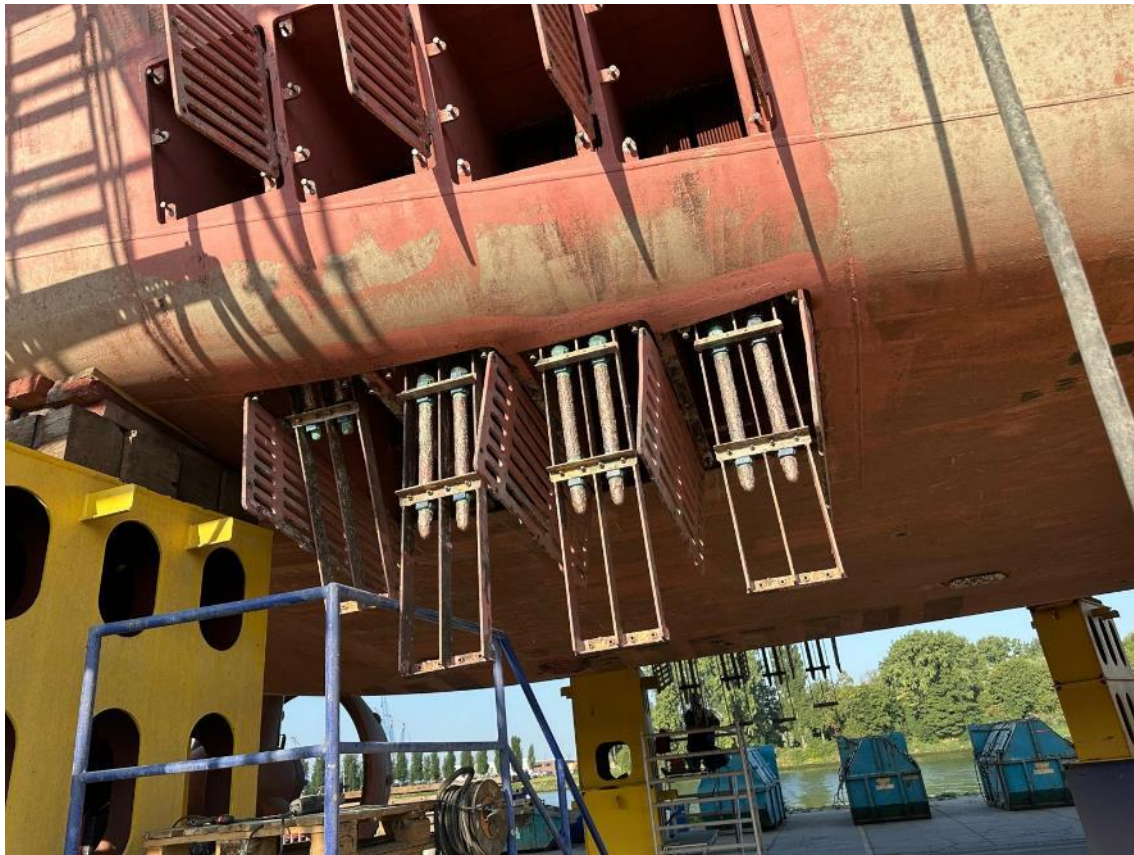




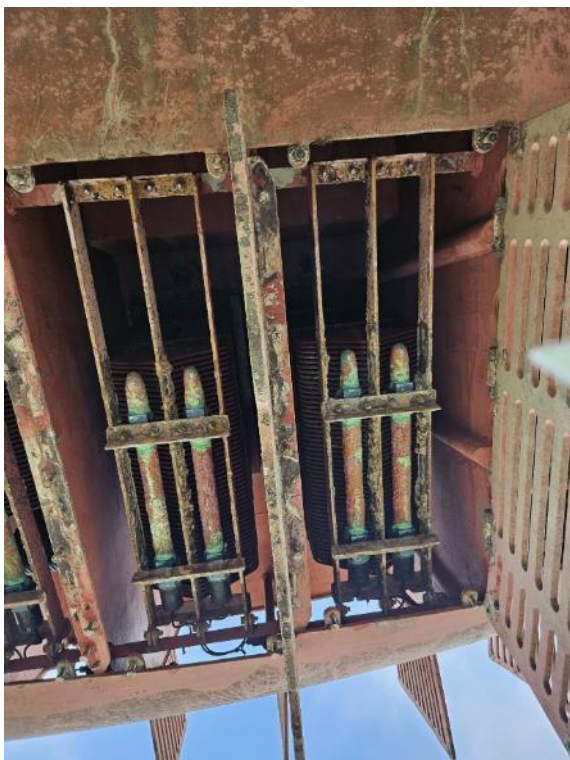
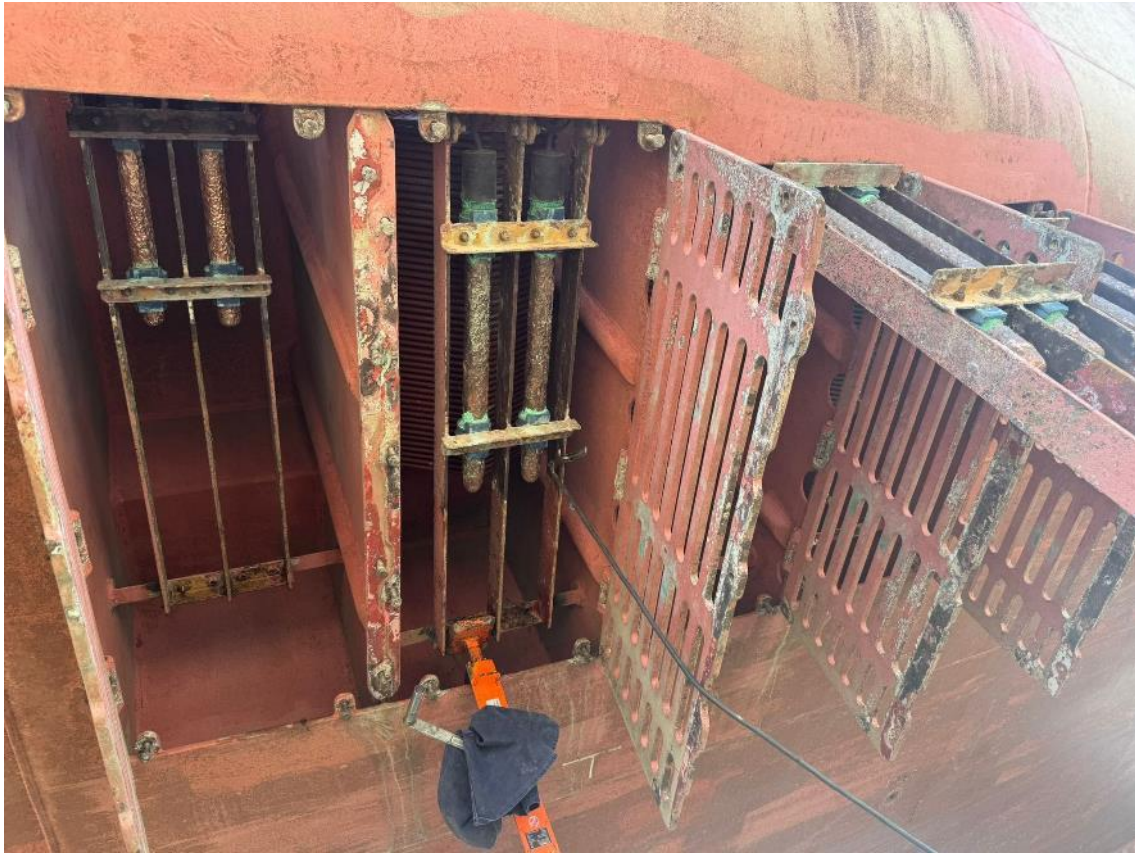




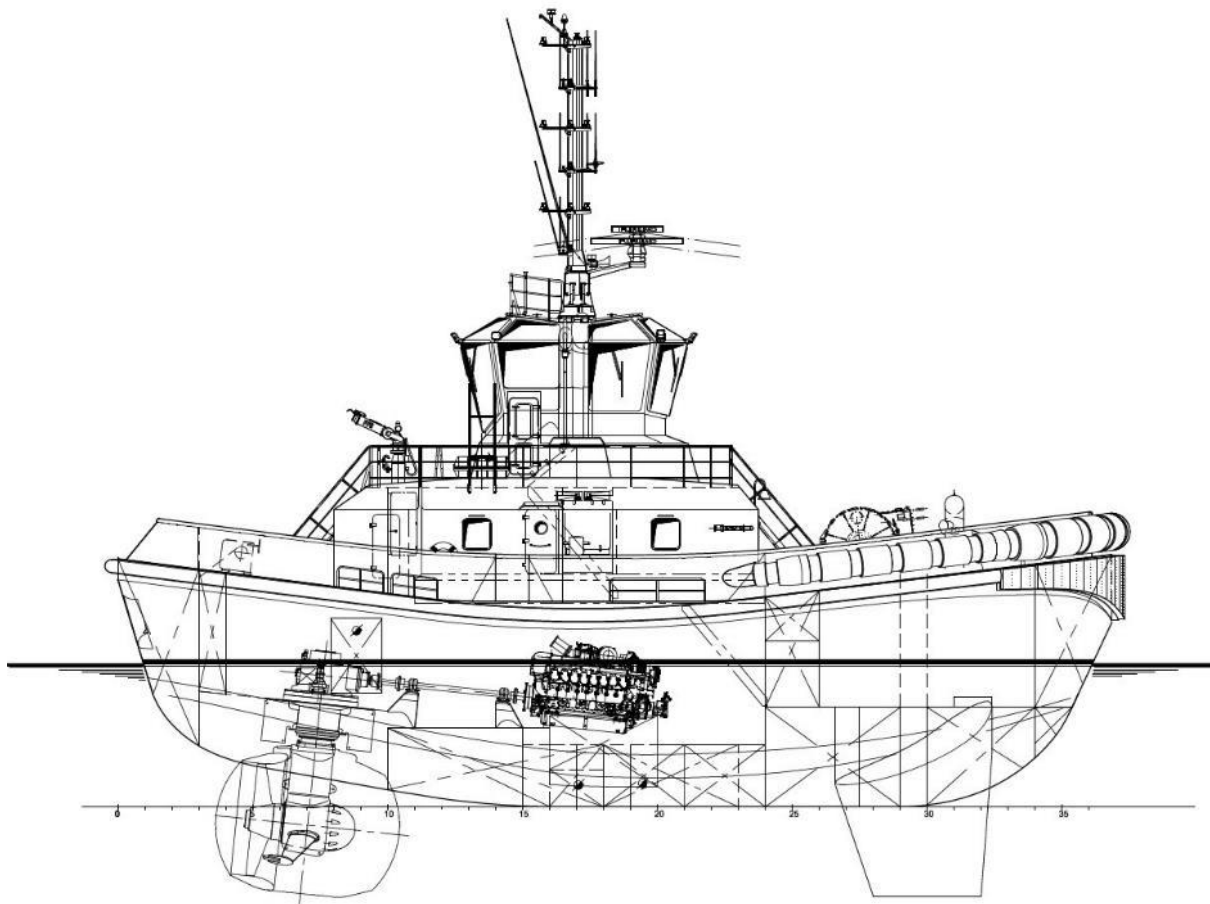
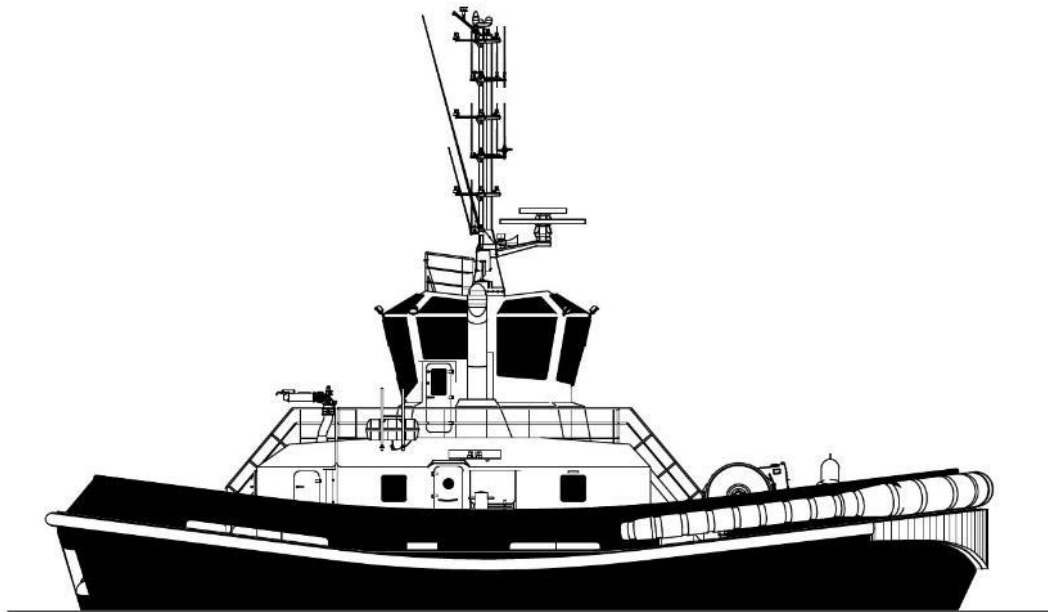


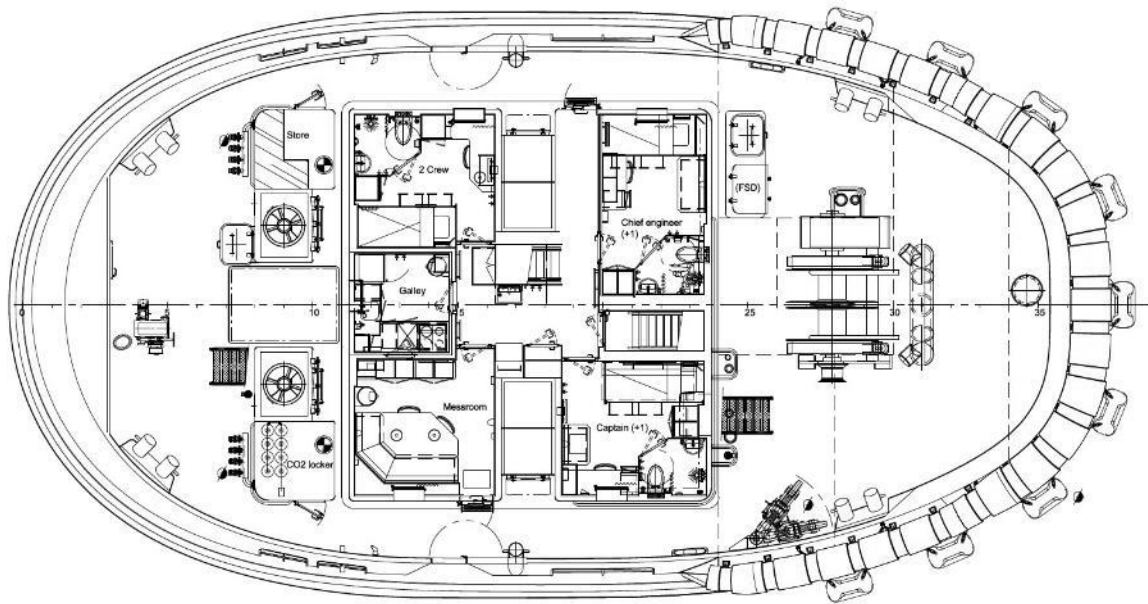
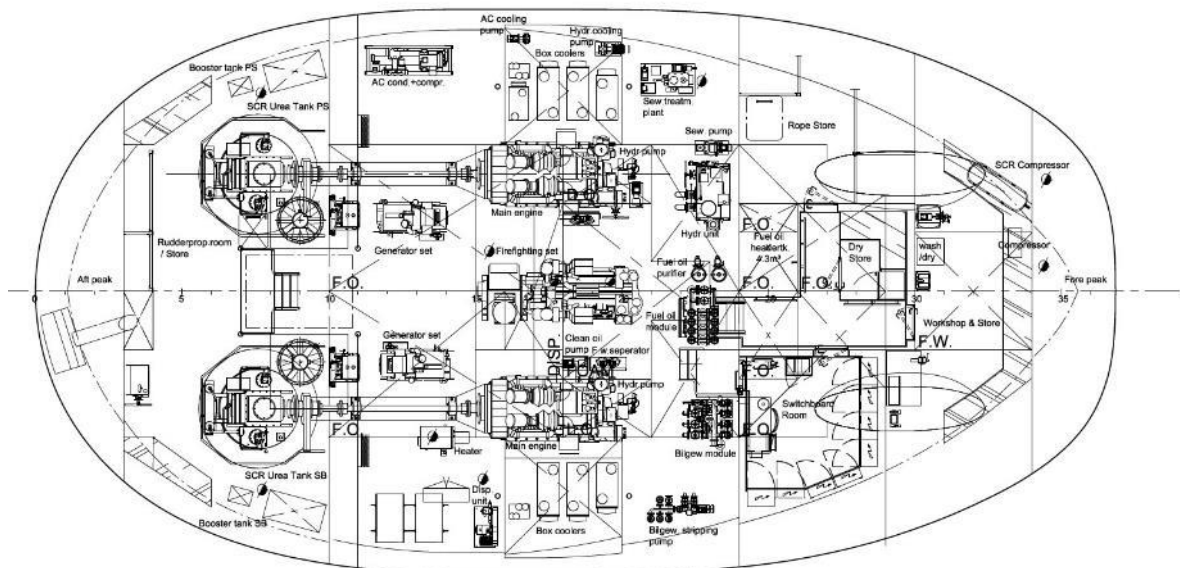






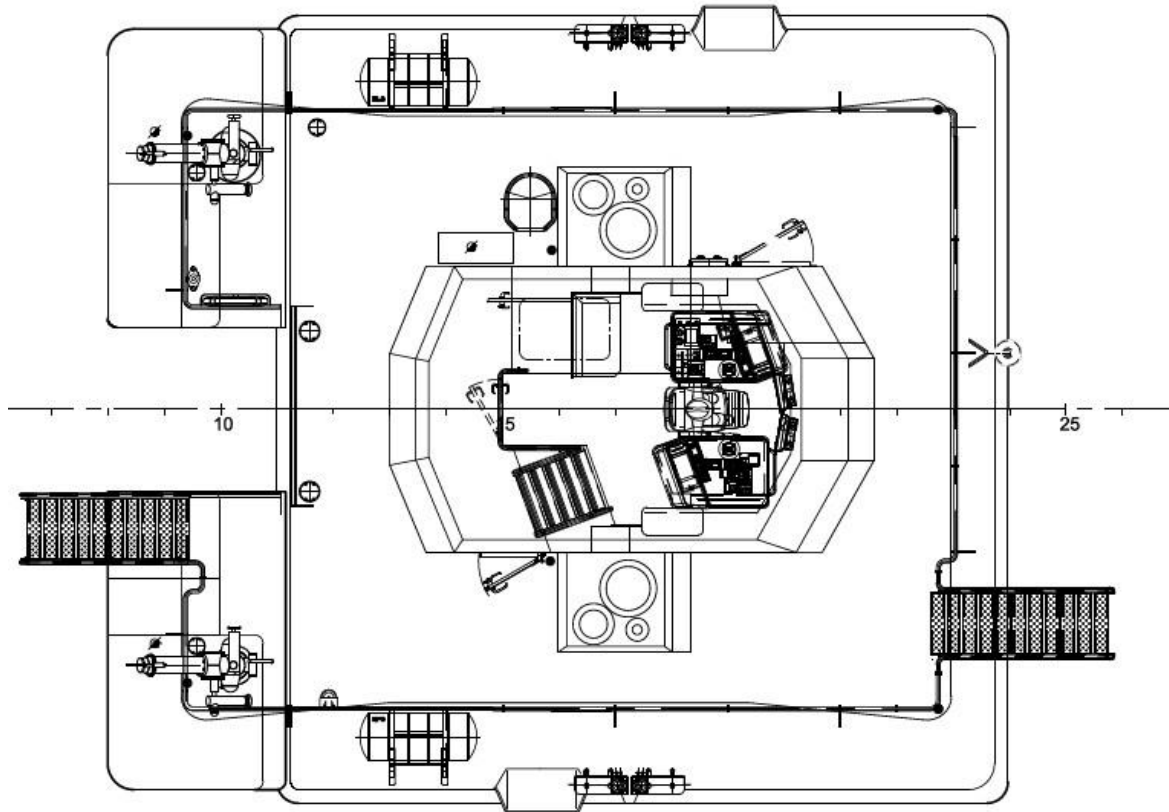


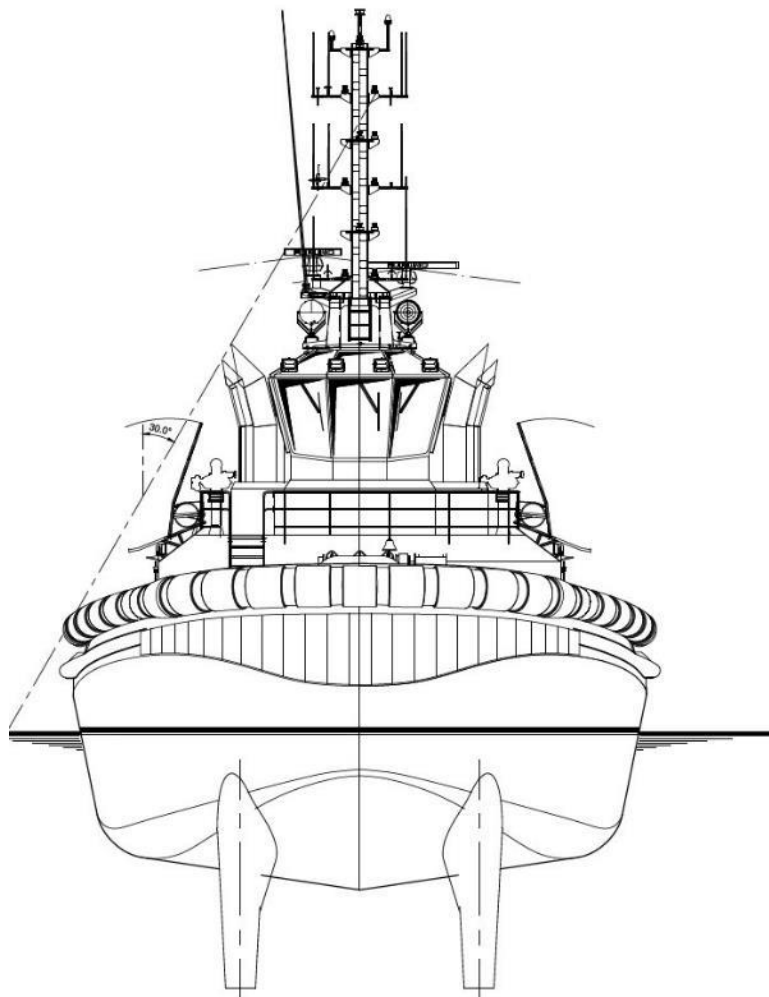


**Main deck****Below Main deck**



## Bridge deck





### Top deck

