

Dredging

DAMEN



Table of contents

Dredging shapes the world	3
Founded in The Netherlands	4
Design & Building philosophy	5
In-depth knowledge	6
Sustainability	6
Standardisation	7
Building on stock	7
Trading & Chartering	8
Damen Technical Cooperation	8
Financing and leasing	9
Top quality	10
Crew safety and comfort	10
Mission equipment	14
Fit for purpose	15
The dredging portfolio	16
Maintenance dredging	18
Capital dredging	20
Aggregate dredging	22
Environmental dredging	24
The dredging portfolio	26
Damen shiprepair & conversion	38
Damen Services	40
A broad scope of vessels	42

The Dutch have lived below sea level for centuries. We respect the sea, whether we fight against her waves or sail across her oceans. For both we need ships: purpose-built, thoroughly researched, proven over time and outfitted with the latest innovations. Damen builds those ships.

When it comes to dredging, Damen delivers the complete range of vessels and services needed for the job. Our dismantable Cutter Suction Dredgers have extremely short delivery times and, like our Trailing Suction Hopper Dredgers, are based on the latest technology, research and design.

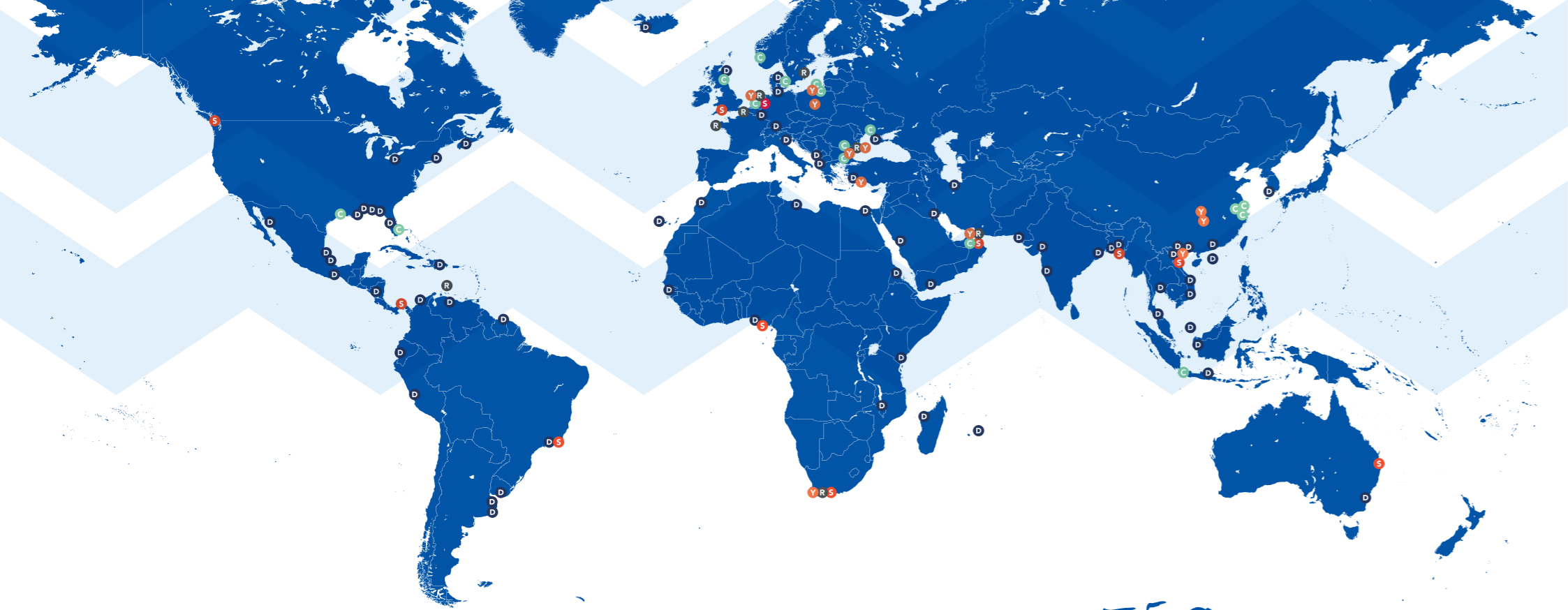
As Damen is a total solution provider, we deliver also all the auxiliary equipment, such as booster stations, pipelines and instrumentation to optimise the dredging process.

In addition, we build dedicated dredging support vessels, such as Multi Cats and Shoalbusters, Stan Tugs and Survey Vessels.

To ensure the continuous and smooth operation of our clients' dredging systems, Damen Services offers repair, maintenance and training facilities from Service Hubs around the world.

Dredging shapes the world





GLOBAL PRESENCE AND SUPPORT

Founded in the Netherlands

Founded in 1927 in Hardinxveld in the Dutch province of South Holland, Damen is a true Dutch company at heart. The values we started out with – reliability, quality craftsmanship, value for money and building close relationships with customers – remain a strong part

of our culture today; a culture that we have taken to the world. Damen operates over 35 newbuild and repair yards, plus Service Hubs, sales offices and marine components facilities in 20 countries across six continents.



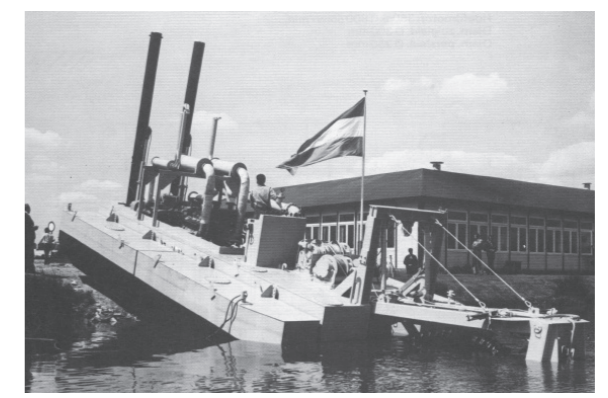
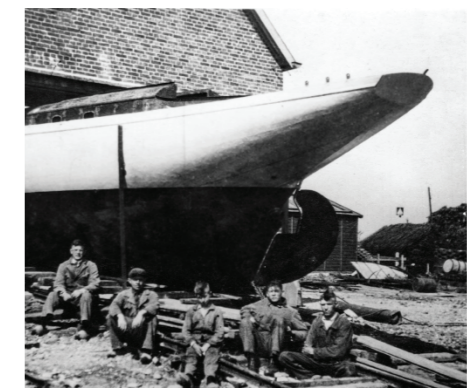
- Y Damen newbuild yard
- R Damen Shiprepair yard
- D Damen Technical Cooperation yard
- S Damen Service Hub
- C Damen Company

THE DAMEN STANDARD

Design & Building philosophy

Damen has been refining its shipbuilding skills and craftsmanship for more than 90 years. Our Chairman Kommer Damen is a true pioneer in the maritime industry, having introduced the standardised shipbuilding concept back in 1969. He understood that this concept gave Damen customers the benefit of being able to order vessels from stock, ensuring a swift delivery.

Extensive R&D and input from our customers over the generations means that Damen vessels continually evolve and improve. Damen vessels are based on proven designs and guaranteed to be built to the highest quality standards, resulting in unbeatable performance, which in turn leads to maximum uptime and the lowest total cost of ownership.



DAMEN'S BACKBONE

In-depth knowledge

All Damen dredgers benefit from thorough R&D and, with research taking place on successive generations of standard dredgers, continual product innovation is guaranteed.

A dedicated research team investigates dredge processes in Damen dredgers. This results in a knowledge centre which ensures that

the latest developments in dredging technology are applied in standard dredging products. Continuous improvements in the equipment makes the standard dredgers efficient, environmentally friendly and safe.

Based on the research of the dredging process and understanding the requirements results in innovative solutions for challenging demands.



THROUGH THE ENTIRE LIFECYCLE

Sustainability

The maritime industry recognises the increasing focus on environmental sustainability. With operations close to shore and in major urbanised areas, the environmental impact that the dredger has needs to be minimised.

Damen has developed, tested and delivered a range of electrically driven dredge pumps, as well as electrically powered dredgers. These electric

drives effectively reduce emissions and noise levels and minimise environmental risks.

Moreover, Damen fits out all its dredge pumps with a mechanical shaft seal, which does not require additional greasing. Damen continues to work towards reducing the environmental impact of dredging.

KEY TO SUCCESS

Standardisation

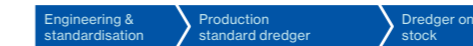
Building standard dredgers in series gives our clients fast access to proven, reliable technology. Our standard designs can be tailored to individual client needs via modular construction, ensuring you of the dredger you need, whatever challenge you are facing. Standard designs can always be equipped with various options to suit specific tasks.



Benefits of standardisation

- Fast response to customer requests
- Competitive pricing
- Short delivery times due to stock hulls
- Reliable, tested and proven technology
- Continuous product development
- Interchangeability of ships, crew, spares
- Lower maintenance costs
- Guaranteed performance
- Benchmark for the industry

Damen standard



Standard dredgers built on stock

PROVEN DESIGN, SHORT-TERM DELIVERY

Building on stock

Keeping our standardised dredgers on stock enables us to deliver them to you in record time. From initial order,

customisation and trials, the dredger can be delivered to you in a matter of a few short months or even weeks.



Conventional shipbuilding

Offer Order Engineering Start production Trials & deliveries



BUYING AND SELLING
Trading & Chartering

Damen Trading is the specialised sale and purchase broker within Damen. Over the years, Damen Trading has gained extensive experience in vessel

brokerage and trade-in services. For customers, this results in a comprehensive service before, during, and after the acquisition of a vessel.

THINK GLOBAL, ACT LOCAL

Damen Technical Cooperation



Damen can assist customers in building Damen vessels locally via Damen Technical Cooperation (DTC).

This highly flexible option results in a valuable transfer of technology and enables owners to enjoy Damen quality combined with the convenience of local production.

Since DTC was established, over 1,500 vessels have been produced locally in more than 60 countries worldwide. Damen can deliver everything from the licence and vessel design to a full material package and if necessary, turnkey solutions based on client requirements. DTC's scope covers the entire Damen portfolio.



Design & Licences
 Basic and/or detailed designs provided
 License/royalty for multiple series
 Proven design



Material packages
 Renowned suppliers
 Materials on stock
 Advanced logistics



Building assistance
 Assistance on-site
 Enhance shipyard skills
 Transfer of knowledge/technology

FINANCIAL SERVICES

Financing and leasing

Damen Financial Services offers a wide range of financing arrangements for all types of Damen vessels, equipment, and products.

Supporting all kinds of clients

Damen Financial Services supports everything from start-up companies to large entities, as well as government bodies.

Relevant financial solutions

For complex and larger projects, a buyer's credit is applied. For smaller, standard projects a supplier's credit is more feasible. Additionally, our customers are able to lease Damen vessels via Damen family-owned leasing companies. For special purpose companies, Damen Financial Services can provide support through project finance. This is based on projected cash flows related to contracts and anticipated contracts.

Strong financial network

For more than 40 years, Damen Financial Services has dedicated itself to arranging export loans and leasing facilities. During this period, we have developed long-standing relationships with national and international commercial banks, export credit insurers (e.g., the Dutch Export Credit Agency Atradius), investors and multilateral institutions.

Some of the major benefits are:

- ▶ Saving costs due to favourable loan durations, down payments, and interest rates relative to local market conditions.
- ▶ A user-friendly service. Damen Financial Services will arrange the most suitable financial package on behalf of our clients. This includes assisting with the application and required documentation and conducting the necessary risk assessments.
- ▶ Our market knowledge and financing experience offers access to a wide range of relevant financial solutions.





IN ALL DETAILS

Top quality

Top quality means a robust, fit for purpose design. Top quality is mastering every detail, without losing track of the overall concept. Damen makes all its dredgers and

dredging components ready for heavy-duty operations. Our design fundamentals are reliability and durability – keys to making every dredging job a success.

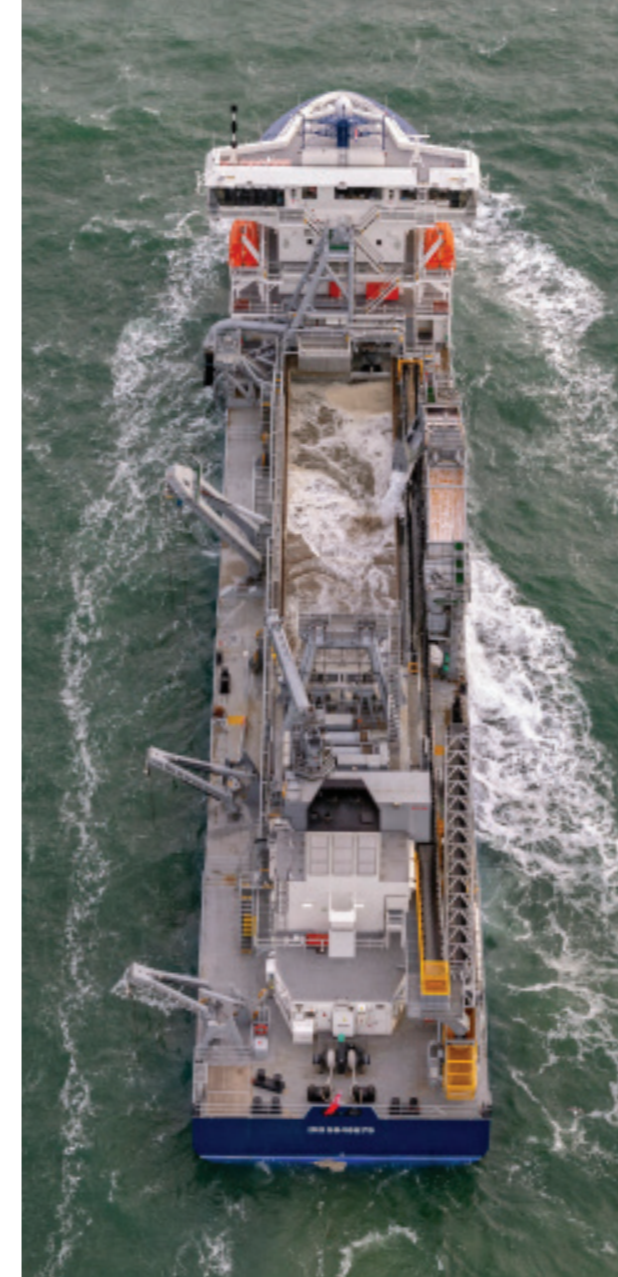
ALWAYS TOP OF MIND

Crew safety and comfort

Safety is an important driver in all that we do. The dredging business is no exception. Besides safety, crew comfort is a key focus. This is why our dredgers are spacious, with comfortable control cabins and bridges as well as ergonomic layout of workspaces with clear lines of sight.



YOUR PARTNER FOR SHAPING YOUR DREDGING JOB



FOR ALL DREDGING OPERATIONS

Mission equipment



Maintenance dredging

- › Maintaining harbours and ports at depth
- › Keeping navigation channels open
- › Beach nourishment for coastal protection
- › Keeping inlets at hydropower dams clean



Capital Dredging

- › Creating a new harbour
- › Reclaiming land from the sea
- › Expansion of existing harbours



Aggregate Dredging

- › Offshore mining of sand and gravel
- › Onshore mining of sand and gravel
- › Deep sea mining



Environmental Dredging

- › Removing polluted sediment in harbours
- › Cleaning lakes and shores at industrial sites



WHATEVER THE JOB

Fit for purpose

Whatever dredging job you are doing, there is a Damen dredger and the necessary equipment to tackle it - all designed with harsh operating environments in mind. The long-term presence of Damen in the various segments of the dredging industry has resulted in a wide range of standard dredgers and auxiliary vessels which can be customised effortlessly.

Your operations can be enhanced using customised dredgers

- › Trailing Suction Hopper Dredgers can be equipped with customised hopper discharge equipment;
- › Cutter Suction Dredgers can be delivered or retrofitted with options such as anchor booms or spud carriage pontoons, boosting their operational efficiency;
- › DOP Dredgers are designed as modular constructions of limited unit size and weight and can be transported to remote areas smoothly;
- › Marine Aggregate Dredgers are designed to fit your operational profile keeping loading time and sailing speed first, ensuring timely tidal harbour access.

The dredging portfolio

1 Stationary Suction Dredgers

- › Sand mining
- › Capital dredging
- › River maintenance

2 Trailing Suction Hopper Dredgers

- › Harbour maintenance
- › Capital dredging
- › Deep sea mining
- › Beach nourishment

3 DOP dredgers

- › Hydro power dam maintenance
- › Environmental clean ups
- › Sand mining

4 DOP dredge pumps

- › Barge unloading
- › Sand mining
- › Environmental clean-up
- › Creating building pits

5 WID dredging systems

- › Mass flow sediment removal

6 Multi Cats

- › Anchor-handling
- › Floating pipe line-handling
- › Cutter teeth replacement

7 Booster Stations

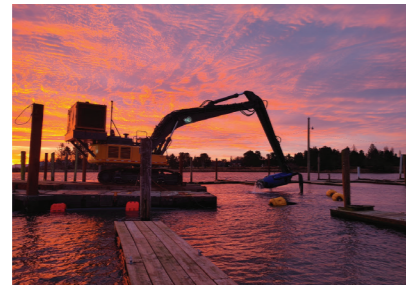
- › Increase discharge distances



Maintenance dredging

Maintenance dredging ensures optimal access to existing navigation channels and continued operations of hydropower dams. The aim is to combat the effects of rivers, currents and tides which would otherwise silt up with the constant ebb and flow of tides and currents.

The solution lies in using lightly manoeuvrable Trailing Suction Hopper Dredgers or stationary Cutter Suction Dredgers to keep things flowing. For the deep inlets of hydropower dams DOP dredgers are the perfect tool.





Capital dredging

Capital dredging involves reclaiming new stretches of land from the water. This includes creation and expansion of harbours.

Capital dredging is necessary as seaborne trade continues to grow and in order to accommodate patterns of urban development.



Aggregate dredging

A growing world economy and population requires a constant supply of sand and gravel. This continuous demand for construction materials requires a constant feed of aggregates.

The aggregate dredging industry operates inland mining pits as well as offshore activity.

Efficient offshore operations take into account the full operational profile, including sailing distances, loading times and restrictions, in order to ensure efficiency in transshipment.

For onshore mining, Damen supplies various dredgers, catering for diverse dredging depths and material hardness.





Environmental dredging

Dredging has a role in helping to safeguard the environment. For example, cleaning up contaminated sediment from waterways. These contaminated sediments can be removed to be cleaned or stored. Key features during environmental

clean-up include achieving the highest possible mixture concentration and minimal turbidity. Precision dredging can be achieved using the right tools and instrumentation for the job, resulting in a safe environment for the crew as well as for local residents.





Available options

- › Anchor booms
- › Spud carriage pontoon
- › Day accommodation
- › Deck crane
- › Navigation package
- › Communication package
- › Wedge piece
- › Swivel hose
- › Heavy duty cutter
- › Increased dredging depth
- › Dredge pump production measurement
- › Position visualisation
- › Class certificate

CSD range

Depth	up to 25 m
Dredge pipe diameter	from 250 - 650 mm
Mixture capacity	up to 7,000 m ³ /h
Installed power	up to 3,938 kW
Total weight	up to 660 t

Some 25 years after the introduction of the best-selling Cutter Suction Dredger range, an all-new Cutter Suction Dredger family has been launched. The CSD450 and CSD600 of the new range are available, the CSD400 is the next of the new series in production.



Available options

- › Emission control IMO tier III and ULEV
- › Hybrid propulsion
- › Self-discharging installation
- › Degassing system
- › Instrumentation packages
- › Non-radioactive production measurement
- › Additional accommodation space
- › Deck crane



TSHD Port & Maintenance range

Depth	up to 25 m
Dredge pipe diameter	up to 700 mm



TSHD Multi Purpose range

Depth	up to 30 m
Dredge pipe diameter	up to 900 mm
Hopper volume	3,000 - 5,600 m ³

ARMED TO THE TEETH

Cutter Suction Dredger series

The Damen standard CSD range consists of six types of dredger. These stationary vessels include an ergonomically designed operating cabin, a main pontoon housing the diesel engines and dredge pump, plus side pontoons, the cutter ladder and the spud poles. This modular

design ensures practical transport. Moreover, the compact size and weight result in practical dismantling and reassembly on the jobsite.

The CSDs are well powered – the power balance is such that all functions of the dredgers can be

operated simultaneously. The modern computer controlled Caterpillar diesels engines have been selected on low fuel consumption and low emission values. They are connected to a closed fresh water cooling system using box or plate coolers.

MAINTAINING THE RIGHT DEPTH

TSHD series

Using extensive in-house and in-depth dredging expertise, our engineers have designed the Trailing Suction Hopper Dredgers (TSHD) from the user's perspective; from 1,000 m³ to 5,000 m³. Efficient in operation and practical in maintenance, they are the most advanced and sustainable TSHDs

we have ever built. Standard, but customizable for your specific operation. It is everything you need to carry out your own dredging activities. This includes all the benefits of operating your own vessel: flexibility and efficiency, twinned with the right

balance between OPEX and CAPEX. We offer a Port & Maintenance THSD range, to keep your port and maintenance dredging tasks up to date. And a Multi Purpose THSD range, to provide you with the power and hopper capacity to take on a wide range of dredging operations.



Available options

- › Various suction heads
- › Electrically and hydraulically powered DOPs
- › Diesel hydraulic power packs
- › Diesel & electrically driven jet water packs
- › Mixture hoses with and without floats
- › Discharge piping on land and afloat
- › Hydraulic hoses including quick couplings
- › Dredge pump production measurement



DOP pump range

Depth	unlimited
Dredge pipe diameter	from 200 - 450 mm
Mixture capacity	up to 4,000 m ³ /h
Installed power	up to 400 kW
Total weight	up to 9.4 t



VERSATILITY IS KEY

DOP submersible dredge pumps

Damen offers a complete range of heavy-duty submersible dredge pumps. These compact DOP pumps are directly powered by either a hydraulic or an electric motor, mounted in a protective casing.

A highly efficient, wear-resistant dredge pump with a large spherical passage is at the heart of the DOP pump. It has excellent suction properties and reaches extremely high mixture densities.

The DOP pump has been designed for highly abrasive dredging environments. It is user friendly and easy to maintain. With over 550 units sold the DOP submersible dredge pump has become the standard in the dredging industry.



DEEP DREDGING

DOP dredgers

The DOP Dredgers come in different sizes, and can each be delivered in four different configurations, depending on the dredging depth as well as on the sand mining method required. Key to the DOP Dredger is its modular

design, enabling easy transport, local construction of the pontoons and practical later additions following an increased dredging depth. The DOP dredger is of a simple design which is the result of using standard

dredging components, smartly made for quick reassembly even in remote locations. The submersed dredge pump maximises the dredge production.



Available options

- › Additional pontoons and ladder extension for increasing dredging depth
- › Wire suspended DOP with sand mining head
- › Rigid hinged cutter ladder for cutter unit
- › Dredge pump production measurement
- › Position visualisation
- › Navigation package
- › Mixture hoses with and without floats
- › Discharge piping on land and afloat
- › Hydraulic hoses including quick couplings



DOP dredger range

Depth	up to 50 m
Discharge pipe diameter	from 150 - 350 mm
Mixture capacity	up to 2,400 m ³ /h
Cutter power	up to 47 kW
Length	15 - 45 m



Available options

- › Bottom doors
- › Spud poles for quick mooring
- › Instrumentation packages
- › Self-emptying system with inboard discharge pump and bow coupling
- › Different type of dry unloader machine



MAD range

Depth	up to 60 m
Trailing pipe	up to 900 mm
Hopper volume	3,500 - 8,000 m³



EFFICIENT MARINE AGGREGATE DREDGING

MAD series

Damen has developed a dedicated range of Marine Aggregate Dredgers (MAD) for the offshore mining of sand and gravel. Using our knowledge and experience designing vessels for the offshore industry, we have paid

particular attention to the optimization of the hull design, which has resulted in the aggregate dredgers having excellent seakeeping performance. Our in-house designed trailing pipe, underwater dredge pump and

screening towers ensure efficient dredging operations. The vessel is also able to autonomously unload the dry cargo to shore.



Available options

- › Remote control
- › Separate double walled fuel tank
- › Priming unit
- › Hydraulically operated rubber ring gate valves
- › Pontoon-based floating booster



Booster Station range

Pipe Diameter	250 - 750 mm
Production	1,000 - 10,000 m³/h
Installed power	up to 2,240 kW
Unit weight	up to 70 t

BRIDGING THE GAP

Booster stations

All booster stations are fitted out with an electric drive or a radiator-cooled diesel engine, which have a constant power over a large speed range. The direct driven dredge pump is identical to those in CSDs.

Booster stations are the ideal tool to bridge large discharge distances to a spoil field, either as single station or with multiple boosters working in series. The design of the booster station frame is based on container sizes,

enabling practical hoisting and transport. The dredge pump drive is mounted in a casing; the dredge pump is directly accessed for easy maintenance.





Available options

- › Trailing suction pipes
- › Submersed and in board dredge pumps
- › DynaCover outer pump casing
- › Degassing systems
- › Dredge valves
- › Drag heads
- › Turning glands
- › Cardan and single hinges
- › Jet water monitors
- › Overflows
- › Dredge monitoring systems

Trailing pipe range

- Pipe diameter 350 - 900 mm
- Pumps / valves low/medium/high pressure



Available options

- › Dredge pump performance
- › Dredge pump production measurement
- › Position visualisation
- › Remote control
- › Online connectivity
- › Survey systems
- › CCTV systems
- › Control & automation



BUILD YOUR OWN DREDGER

Trailing suction pipe packages

Complete trailing pipe packages are shipped around the globe for newbuilds or retrofits of trailing suction hopper dredgers. The dredging mission equipment is designed for a specific vessel,

making use of a range of standard components. At the heart of each dredger is a Damen in-house designed dredge pump, cast in wear resistant materials, fitted out with a maintenance friendly mechanical seal.

The dredging package may include any hopper loading or discharging component including dredge valves and overflows, all according to the hopper dredgers specific operational profile.



EFFICIENCY IS KEY

Dredging instrumentation

In building a more sustainability world, efficient dredging is the key in any dredging job. Yet due to the nature of the job, the operator is basically blinded during the operation, making the best efficiency point hard to obtain. Dredging instrumentation makes the invisible visible for the operator, lending a pair of eyes on

the functionality of the dredging equipment, the efficiency of the dredge pump, or preventing under- and over-dredging. Valuable process parameters are shown on screen enabling the operator to optimise the production. With online connectivity, real life data can be analysed from any other place in the world.

Damen can deliver dredging instrumentation, spanning everything from a simple dredge pump monitoring vacuum transmitter, to a comprehensive, state-of-the-art package combining data from all aspects of the operation. All dredging instrumentation is available for newbuilds as well as retrofits.





WID range

Depth	up to 20.0 m*
Width	up to 14.5 m*
Total flow	up to 10,500 m ³ /h*
Footprint	up to 28 m ² **

*Depend on vessel and dredging conditions



Available options

- ▶ Deck crane
- ▶ Nautical and communication equipment
- ▶ Survey equipment
- ▶ Fuel transfer provisions
- ▶ Dredge plough
- ▶ WID system

Multi Cat range

Length	10 - 37 m
Beam	4,5 - 17,7 m
Bollard pull	2 - 50 t
Speed	7 - 11 knots
Draught max	1.3 - 3 m

COMPACT PACKAGE TURNS YOUR VESSEL INTO A DREDGER
Water Injection Dredgers

A Water Injection Dredger (WID) aims to remove sediment by injecting it with a large quantity of pressurised water. The bottom sediment, being silt or fine sand, will lift and be removed by

current, gradient or tidal movement. The WID gear can be integrated on a new vessel, or it can be retrofitted to an existing one. The design of the various components is such that it is

delivered as a modular dismountable feature. As a result, flexibility is added to the primary tasks of the vessel. The plug and play system can be installed easily without docking.

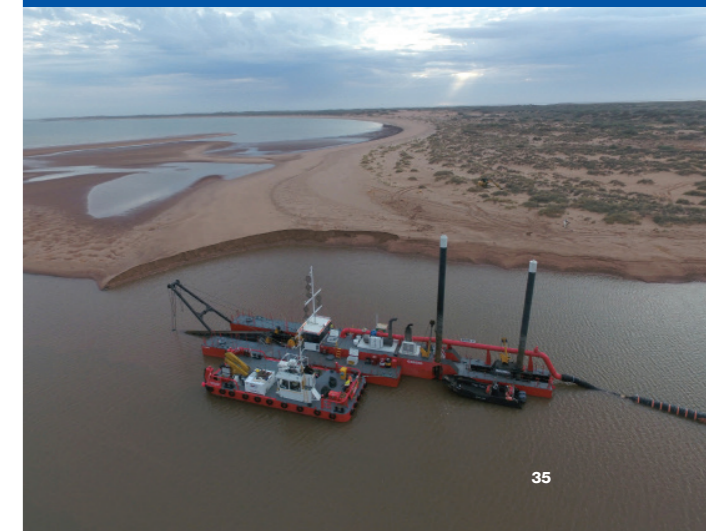


EFFICIENT DREDGE ASSISTANT
Multi Cats

The Multi Cat is a reliable workboat fit for a variety of tasks in the dredging environment. Its large, flush deck space is optimised to accommodate gear such as dredge anchors and

discharge piping. It is fitted out with a crane for tasks such as delivering supplies and spares to dredgers. From the wheelhouse the crew has 360° visibility. All jobs can be handled

with minimal crew. This shallow draught workhorse can do its job effortlessly in harbours and shallow waters. The Multi Cat is strongly constructed and is fitted out with heavy fendering.





Available options

- › Deck crane
- › Rainbow nozzle
- › Vacuum relief valve
- › Search light
- › Communication package
- › Flow meter
- › Local construction

PSD specifications

Depth	8 m
Dredge pipe diameter	350 mm
Mixture capacity	up to 2.000 m3/h
Installed power	287 kw
Total weight	30 t



Dredging Mission Equipment



COST-EFFECTIVE DREDGING

Plain Suction Dredgers

Plain suction dredgers are ideal for dredging operations where heavy mechanical excavation, such as cutter heads, is not necessary. These dredgers are designed to maximize sand output while minimizing capital,

operational, and maintenance costs. Powered by diesel engines and equipped with an inboard dredge pump and jet water pump, they operate efficiently by using intuitive controls. The operators benefit from added

comforts, including air conditioning, heating, sunscreens, and chair suspension. These features ensure efficient performance without requiring extensive training.

YOUR PARTNER IN MAINTENANCE AND CONVERSION

Damen shiprepair & conversion



In addition to shipbuilding and ship design, Damen offers a network of 13 repair and conversion yards worldwide. With drydocks up to 420 x 80 metres, handling 1,500 repair

and maintenance jobs annually. The facilities are spread throughout Europe and in Singapore, South Africa, the Americas and the UAE, for your convenience and flexibility.

➤ REPAIR ➤ CONVERSION ➤ REFIT ➤ MAINTENANCE ➤ HARBOUR & VOYAGE

CASE 1:

Conversion to dual fuel hopper dredger

Damen Shiprepair Dunkerque converts the 8,500 m³ trailing suction hopper dredger Samuel de Champlain. The hopper was built in 2002 with a diesel-electric burning MGO propulsion system. Now, it will run on dual-fuel combining LNG and MGO. The turnkey package includes engineering, procurement and

changing the generators to dual-fuel models as well as the installation of onboard LNG storage facilities. The conversion, the first of its kind in Europe, is part of an EU-supported initiative to promote LNG propulsion in short-sea vessels operating along the European Atlantic coast.



CASE 2:

Building your dredger on your local yard



A local yard for the construction of your dredger may be at the top of your priority list. Damen can either deliver the complete design plus a components package to this yard of your choice. Or Damen can supply the dredging mission equipment, drives, project management, field service assistance or any other support you need for the design of your local naval architect.

Whatever the dredging equipment package exactly comprises, together we will ensure that the end result meets the highest standards. Dedicated project management works closely together with the local industry and supplier network. This stimulates local employment opportunities and boosts the regional economy, with a well performing dredger as result.

LIFECYCLE SUPPORT

Damen Services



Damen Services cares for your fleet with a wide-ranging portfolio of customer support and after-sales services covering a vessel's complete lifecycle.

Where you need us, when you need us; we support you from deployment to decommissioning. Our diverse service options help you achieve your up-time and reliability goals whilst ensuring low lifecycle costs. Our global service network and availability guarantee a swift response.

START-UP GETTING YOU GOING

DEPLOYMENT KEEPING YOU GOING



Ship Delivery

Through our worldwide service support network and knowledge of transport contracts, we offer comprehensive logistics to handle own-keel, heavy-lift, towage, and semi-submersible transport deliveries.



Fleet Support

Our fleet support solutions make sure you can concentrate on your core business. We help you in achieving a reliable performance through offering remote support, the use of technological developments and total lifecycle support.



Warranty Support

Our philosophy of building long-term relationships with our clients extends to providing excellent warranty support. During the warranty period, we regularly visit our clients to ensure satisfaction with our products. In the event of a problem arising, we are well-placed to solve it swiftly.



Training

Our training programmes help to ensure your employees are skilled, motivated, and committed. This approach helps you to reach the all-important goals of reduced operational costs and improved vessel uptime.



Technical Documentation

Our professional and experienced in-house team provides all the technical documentation you need for safe, smooth and efficient operation that maximises the life of your vessel.



Integrated Logistics Support

Integrated Logistics Support (ILS) helps you to improve availability and maintainability of your fleet and assets.



Technical Assistance

Damen Services delivers the technical assistance to ensure optimal performance throughout the entire lifecycle of your vessel. Our specialities cover problem solving, short, well organised docking periods and high quality maintenance and repair.



Parts & Equipment

Damen Parts Services offers competitive prices and efficient deliveries. Over the years we have built up strong purchasing power and a considerable supplier network. Thanks to our network of global Service Hubs, we can guarantee short response times.



Repair & Conversion

Our established global sales network provides you with dedicated repair and conversion contacts to assist, whatever your requirements may be.



Services Portal

The Damen Services Portal is an online platform that makes it easy for everybody involved in operating, maintaining and managing vessels to stay on top of their job.

GLOBAL PRESENCE



» Service Hubs

Europe

Damen Services Netherlands | Gorinchem
Damen Services Germany | Hamburg
Damen Services United Kingdom | Southampton

Africa

Damen Services Africa | Cape Town
Damen Services Nigeria | Port Harcourt

Asia & Middle East

Damen Services Bangladesh | Dhaka
Damen Services Middle East | Sharjah | Dubai
Damen Services South East Asia | Haiphong

Americas

Damen Services Brazil | Rio de Janeiro
Damen Services Canada | Victoria
Damen Services Central America | Panama

Australia

Damen Services Australia | Brisbane

Worldwide Service Hubs

Damen's Service Hub network grew rapidly over the past few years. At present there are more than ten hubs on five continents. We continuously enhance our services in regions without proximity to a Damen Shipyard, but where Damen vessels are operating. Local presence enables our skilled engineers to respond faster than ever to your needs.

A broad scope of vessels

General Summary

Damen Shipyards Group operates over 35 newbuild and repair yards, plus Service Hubs, sales offices and marine components facilities, employing 12,500 people worldwide. Damen has delivered over 7000 vessels in more than 100 countries and builds some 175 vessels annually. Due to its unique, standardised ship-design concept, Damen can guarantee consistent quality.

How we build

Damen's focus on standardisation, modular construction and keeping vessels in stock leads to short delivery times, low total cost of ownership, high resale values and reliable performance. Furthermore, Damen vessels are based on thorough R&D and proven technology.

Products and services

Damen offers a wide range of products including tugs, workboats, naval and patrol vessels, high speed craft, cargo vessels, dredgers, vessels for the offshore industry, ferries, pontoons, and superyachts.

Colophon

© 01-2025

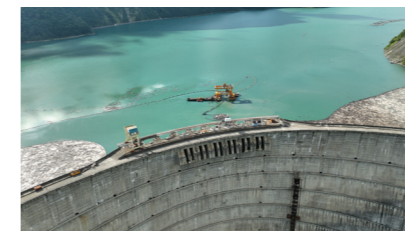
Damen Shipyards Group is the copyright owner of this brochure - © Damen Shipyards Group 2025. All rights reserved. Except with the prior express written permission of the Damen Shipyards Group, this brochure and its content may not be distributed and/or commercially exploited.

If you have any comments on our brochures, please let us know: info@damen.com

For nearly all vessel types, Damen offers a broad range of services, including maintenance, spare parts delivery, training, and the transfer of (shipbuilding) know-how. Damen also offers a variety of marine components such as nozzles, rudders, winches, anchors, anchor chains and steel works.

Damen Shiprepair

Damen Shiprepair has a worldwide network of fourteen repair and conversion yards of which ten are located in North West Europe. Damen Shiprepair has more than 40 floating (and covered) drydocks, including the longest at 420 x 80 metres, and the widest at 405 x 90 metres, as well as slopes, ship lifts and indoor halls. Projects range from the smallest simple repairs through to class compliance, maintenance, complex refits and the complete conversion of large offshore structures. Damen Shiprepair completes around 1,500 repair and maintenance jobs annually, both at yards, as well as in ports and during voyages executed by our dedicated Harbour & Voyage team.





DAMEN

Damen Shipyards Group
Avelingen-West 20
4202 MS Gorinchem

P.O. Box 1
4200 AA Gorinchem
The Netherlands

+31 (0)183 63 99 22
info@damen.com

Find out more on [damen.com](https://www.damen.com)