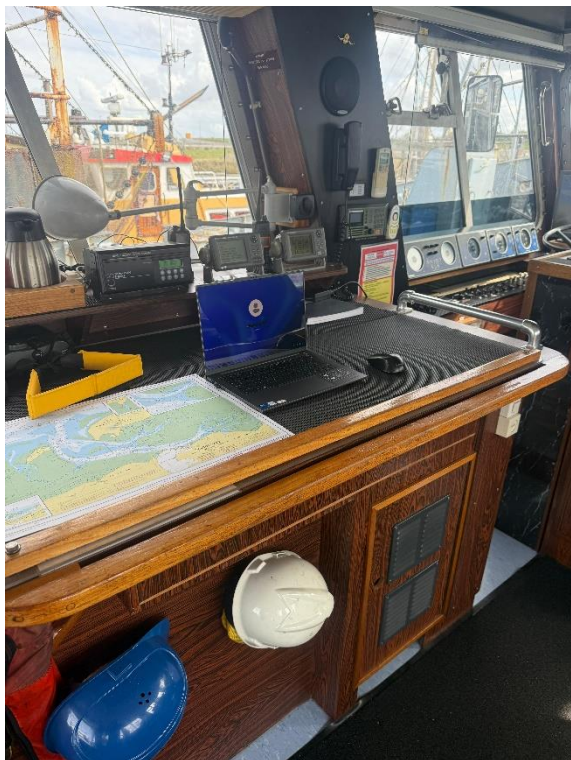


This vessel is suitable for survey operations, crew transport, traffic control, patrol duties, dive support, guard and transport.

Type	Shallow draft multipurpose survey crew tender
Built	1986
Dimensions	23.70/ 22,86 x 5.08/4.08 x 2.92 m
Draft	1.60 m max.
Air draft	6.20m
Hull material	Steel hull, aluminium superstructure
Displacement	Max. 60,250/ min. 48.400 (Netherlands inland tonnage register)
Tonnage	GT/ NT 43.30 (UK register)
Propulsion	2x 360 °C thrusters
Main engines	2x Mitsubishi
Output	550 hp total
Speed	Service speed ± 10 knots Maximum speed ± 14 knots
Free deck area	6 x 4 m aft
Deck equipment	Hydraulic Seacrane 1600 kgs at 2.20 m with winch Electric anchor winch Electric capstan Deck hatch to storage area below main deck
Aux. engines	27 kVA, 220/380V, 50 Hz
Tank capacities	Fuel oil 4.5 m ³ Fresh water 1.5 m ³ Waste water 1.5 m ³
Passenger capacity	Seating for 15 passengers, two cabins with double berths, mess-room, galley, washing-shower facility.
Nav./comm. equipment	Satellite compass, magnetic compass, 2x radar, 3x GPS, 2x echosounder, 3x VHF/DSC, 2x chart plotter with AIS, weather station, autopilot.
Class	MCA workboat code CAT 2 – 60 nm/ EU Inland water waters certificate workboat – EU zone 3 and 4, Netherlands zone 2 and rivers Rijn, Waal and Lek.
Remark	Moon pool for survey equipment.

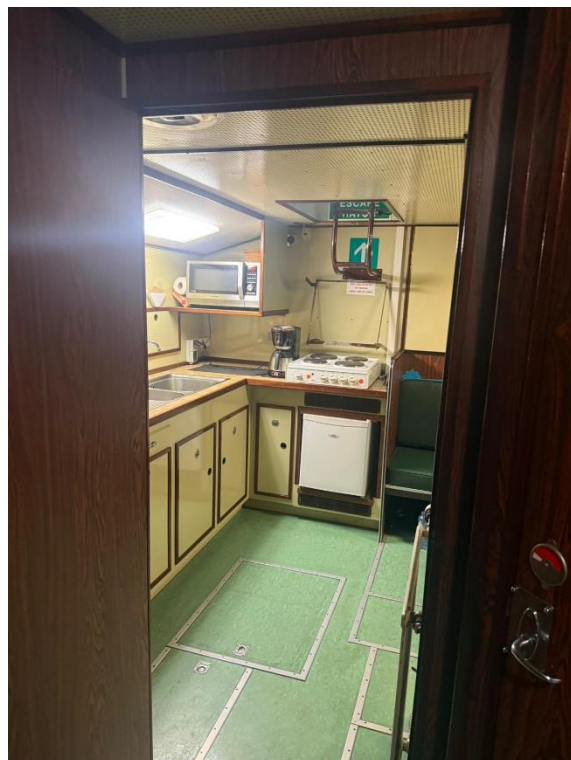




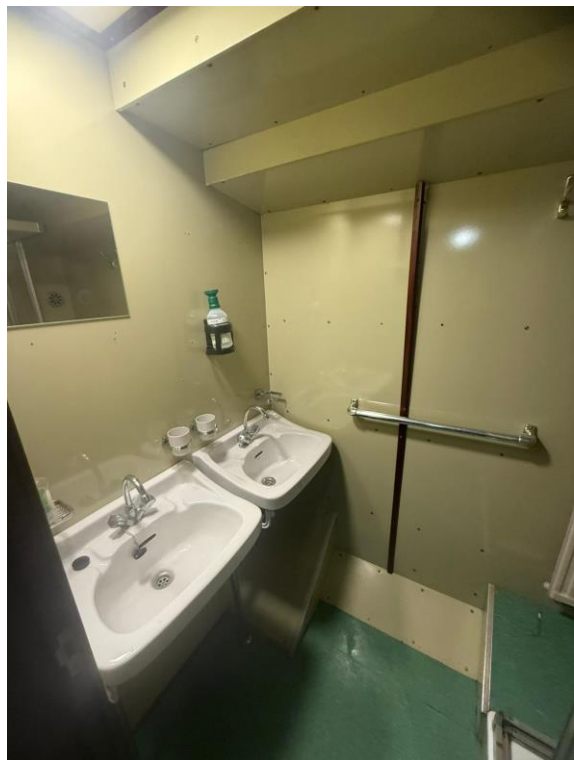


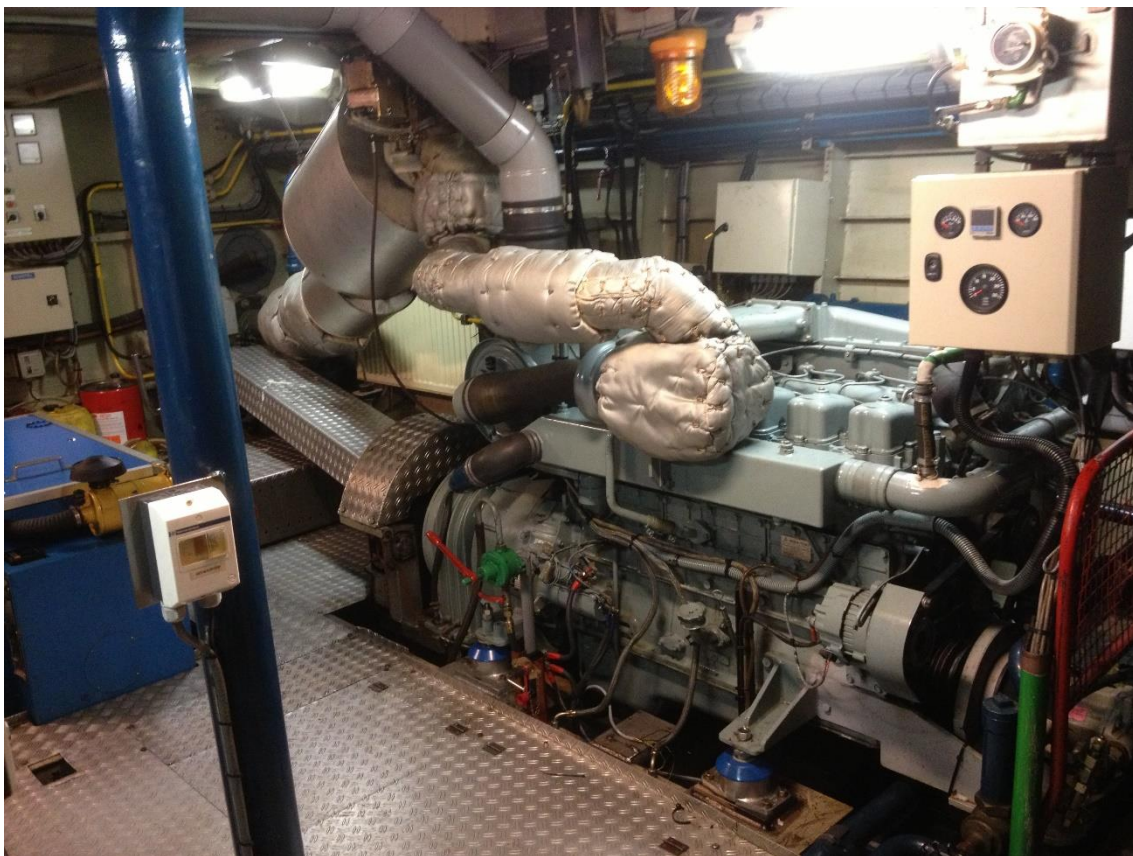
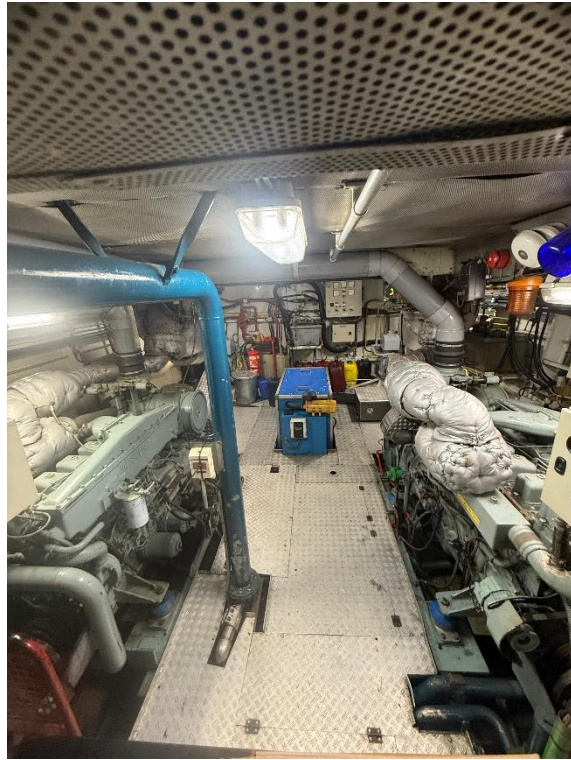
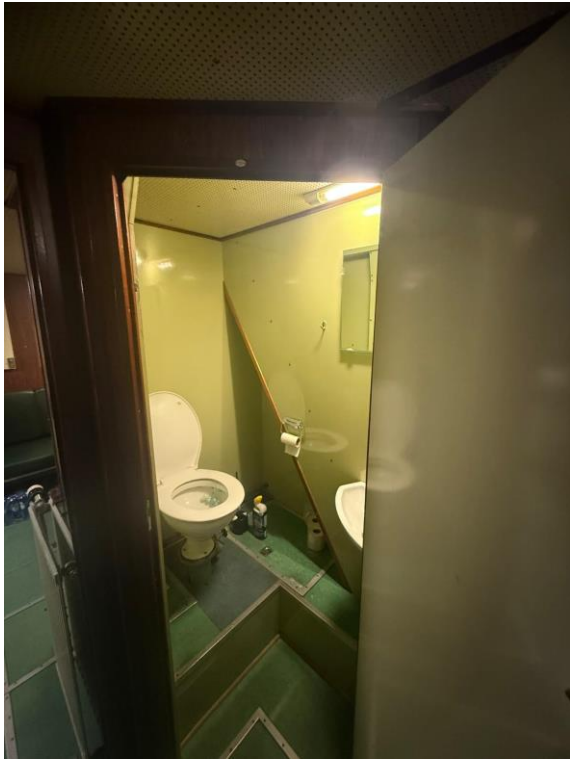


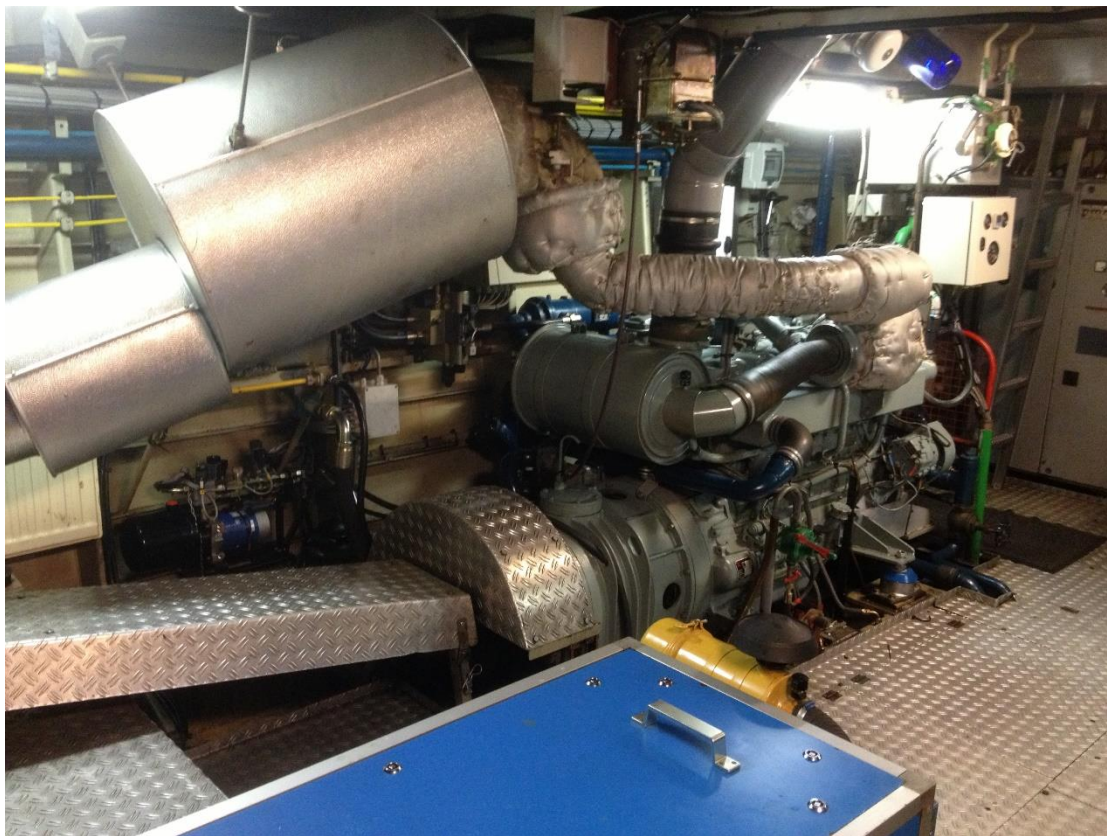
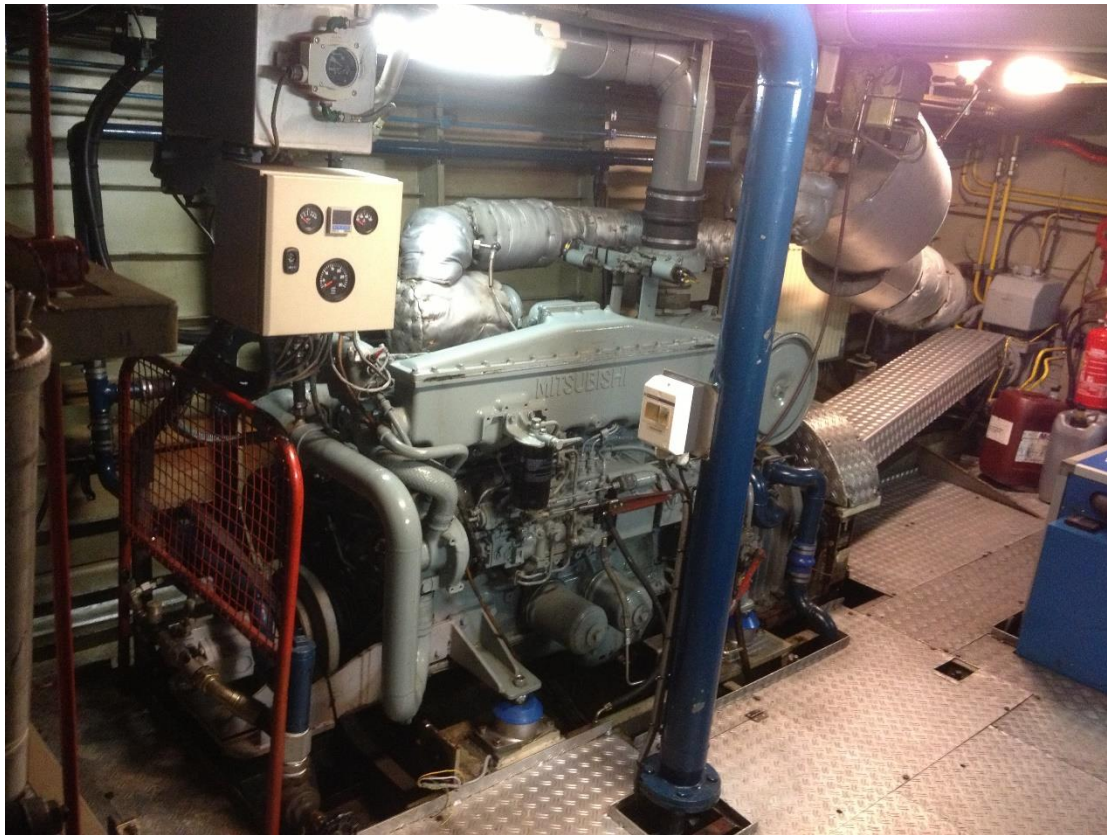






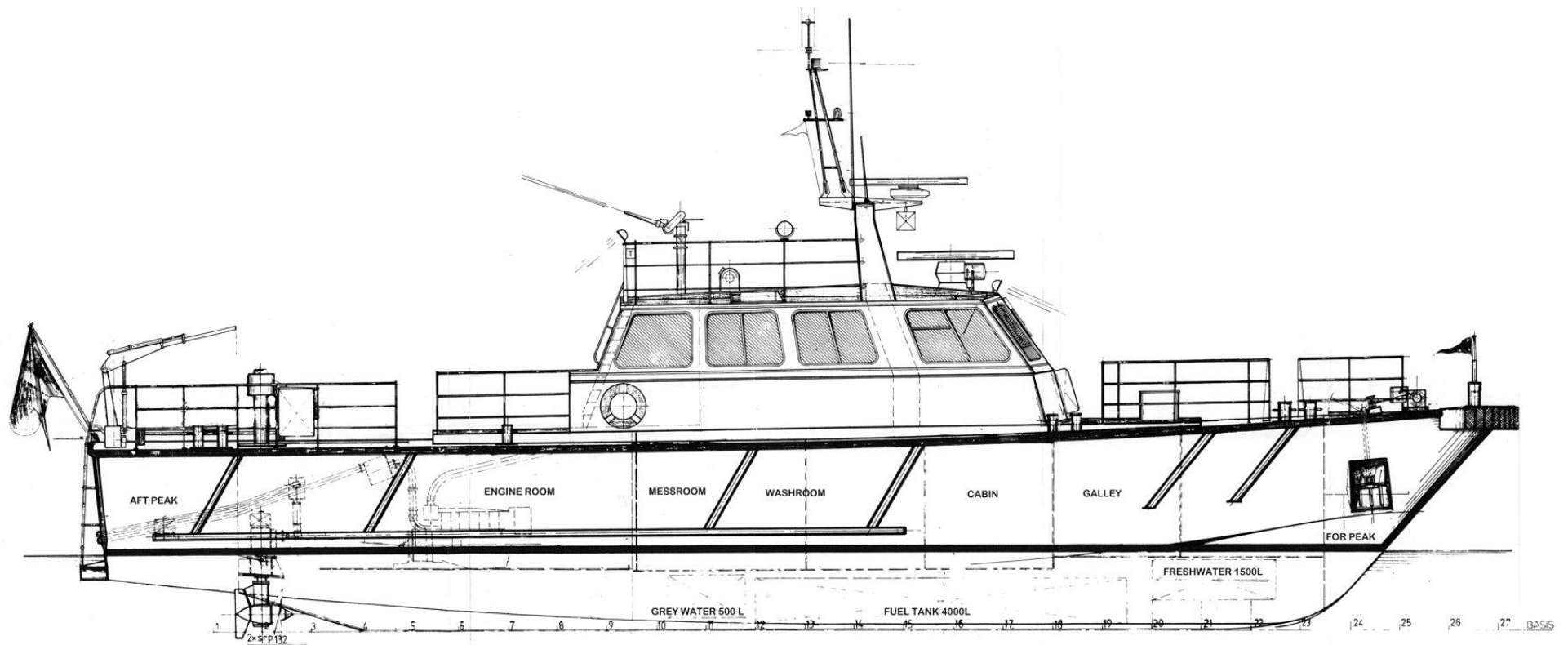


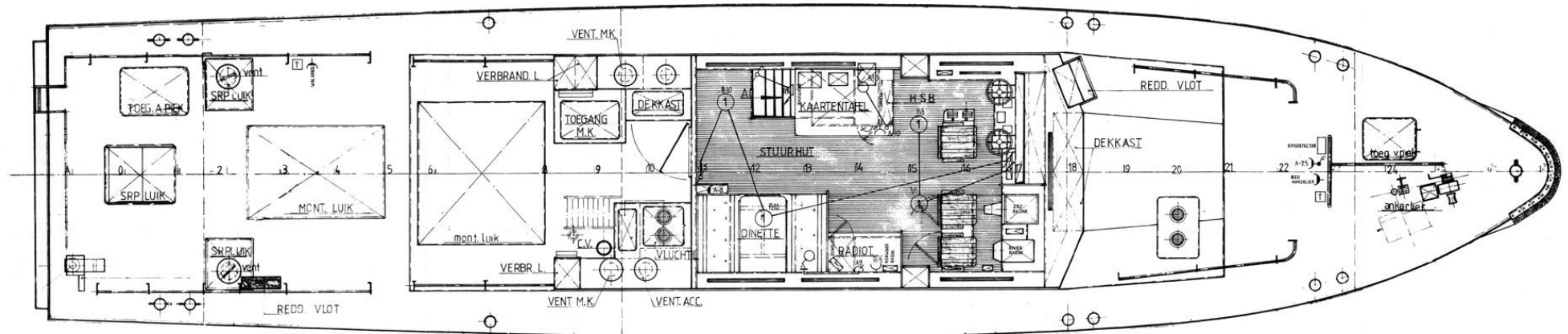












(original drawing, present lay-out is with 15 seats as per photos)

