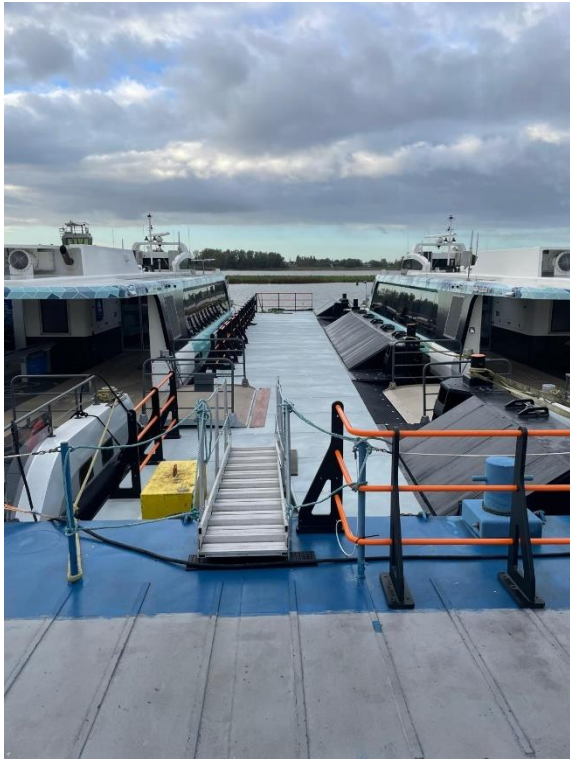


This jetty is suitable to use in coastal waters, harbours and inland waters.

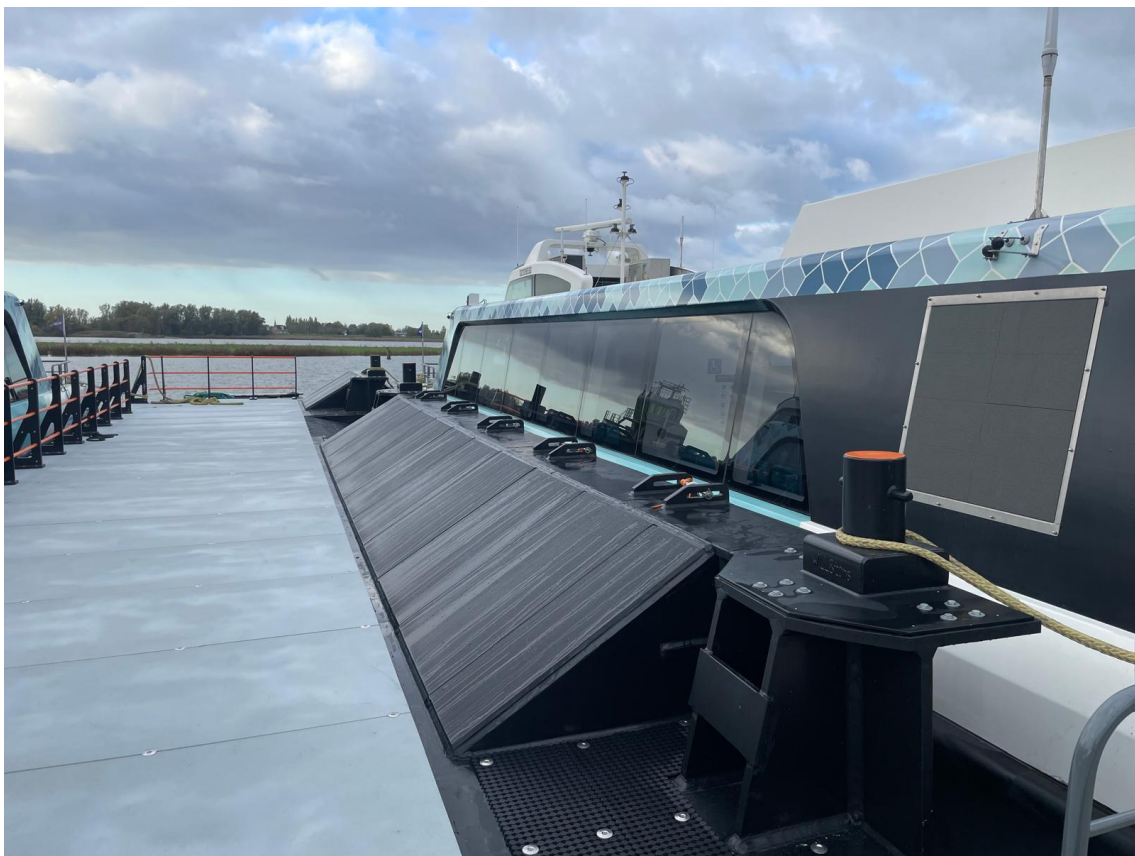
Type	DAMEN HDPE pontoon 3006
Built	2025
Dimensions	32.20 x 5.50 x 1.80 m
Draft	0.50 m
Freeboard	1.30 m
Free deck space	116 m ²
Deadweight max.	42 tonnes
Deck load	0.5 tonnes/m ²
Deck	GRP grating or anti-slip
Sea water conditions	0°C +35°C
Outside air temperature	-40 °C +60 °C
Wave height	0.60 m (zone 3 EU inland)
Towing brackets	One aft, one forward
Bollards	4 pcs. max. 8 tonnes load
Draught marks	At fore on PS and SB every 20 cm
Boarding platform	A wearing plate on top of the HDPE deck
Spud pole foundations	2x
Fendering	Combination of HDPE and pneumatic rubber fender
Flooring	High-traffic wear-resistant anti-slip solution
Class	No classification certificates
Remark	New and never used











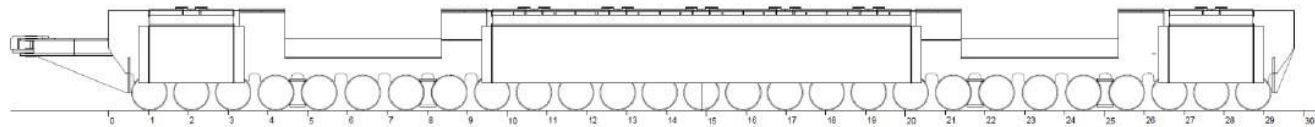




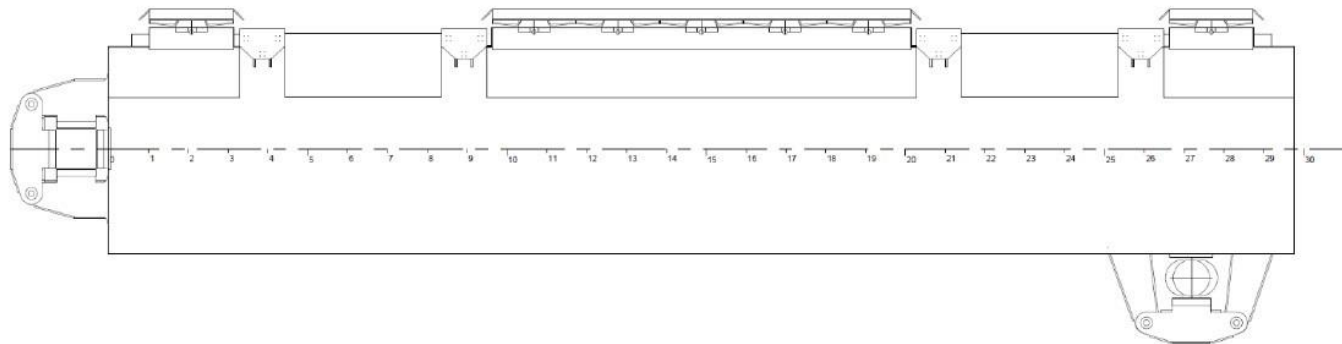




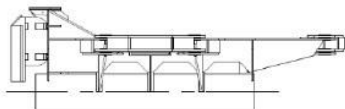
SIDE VIEW



TOP VIEW



AFT VIEW



FRONT VIEW

