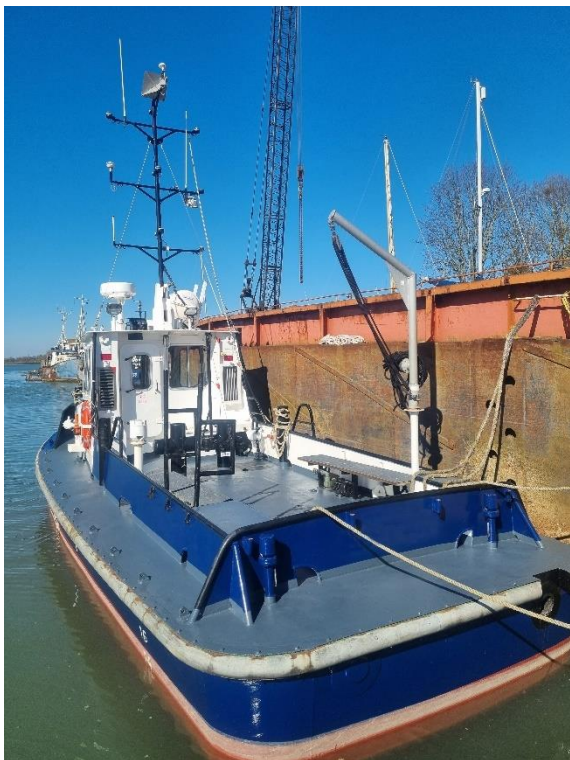
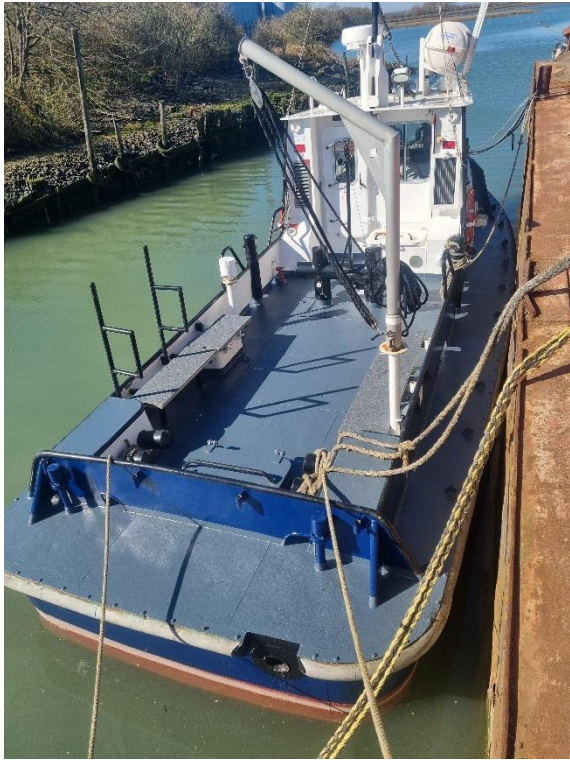


This tugboat is suitable for towing, mooring, line handling and passenger transport. She has had a very sheltered life and has barely been used and is almost in as new condition internally and externally. The tug has been recently drydocked during which hull was painted as per below photos.

Type	DAMEN Pushy Cat 1204
Built	2008
Dimensions	12.29 x 4.13 x 2.00 m
Draft	1.40 m
Propulsion	Single screw in nozzle
Main engine	Caterpillar, type 3056 TA/C
Output	165 hp at 2100 rpm
Gearboxes	Twin Disc, type MG 5050, ratio 3:1
Rudders	2x 15 mm single plate
Steering gear	Hydraulic 2x 45° + rudder indicator
Speed	± 8.2 knots
Bollard pull	± 2.1 tonnes
Displacement	33 tonnes
Deck equipment	Anchor (2x), towing hook SWL 70 kN
Battery sets	2x 24 V, 200 ah, changeover facility
Alarm system	Engine, gearbox, bilge alarm
Bilge and fifi system	Sterling VW20, 24 m ³ /hr at 10 m.w.g. and deck and engine room hydrant.
Fuel oil system	Water separator, emergency stop
Cooling system	Closed cooling system
Tank capacities	Fuel oil 2.7 m ³
	Sewage 0.4 m ³
Accommodation	The heated wheelhouse is completely insulated and finished with durable modern lining, acoustical Dampa ceiling, floating Bolidt floor and is equipped with a Helmsman seat, a small settee and fold-up seat. On aft deck two wooden benches are fitted.
Nav./comm. equipment	Compass, radar, chartplotter/echosounder, GPS, VHF, Anemometer
Class	Lloyd's Register 100 A1 Launch Extended Protected Waters Service [✱] LMC MCA Marine Guidance Note MGN 280(ML) Category 3 (Workboat Code)
Remark	Both engine and gearbox are resiliently mounted.



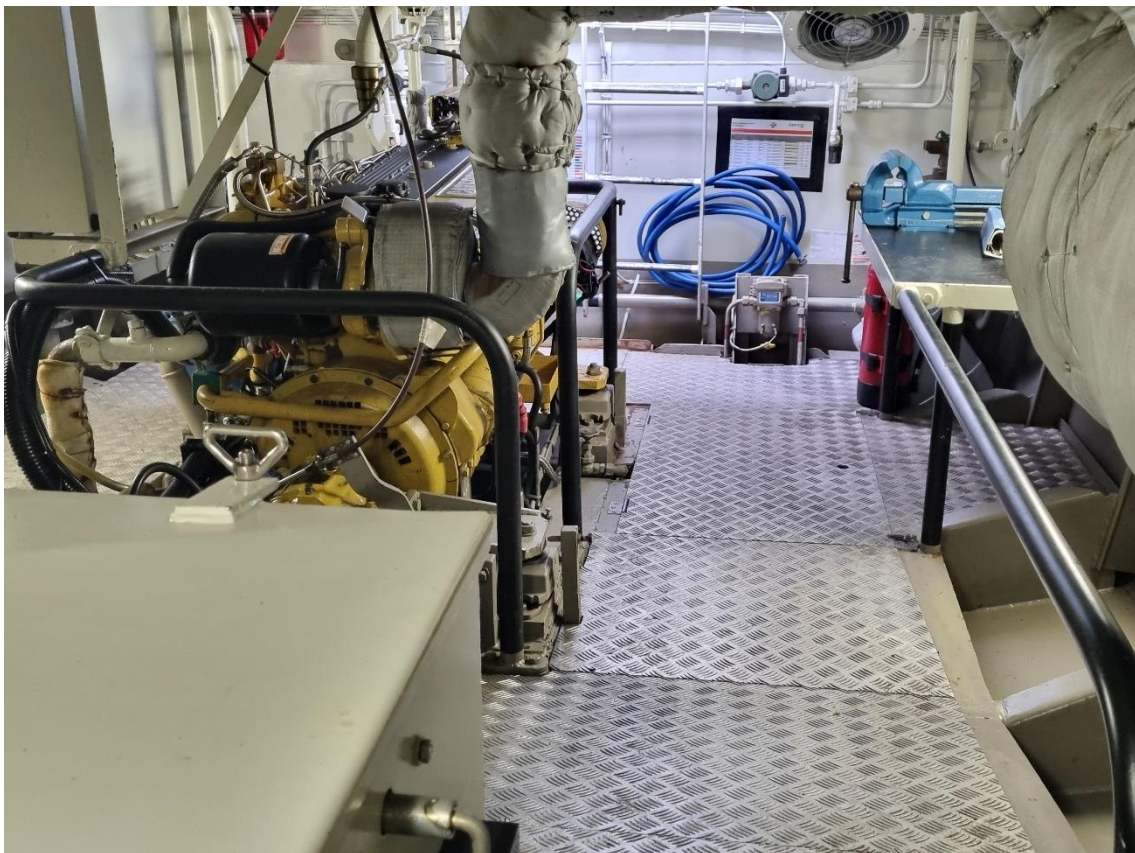


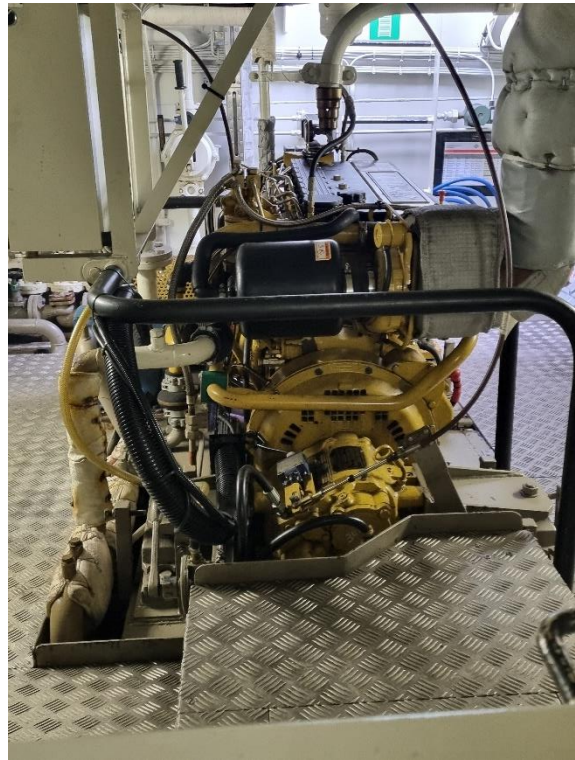


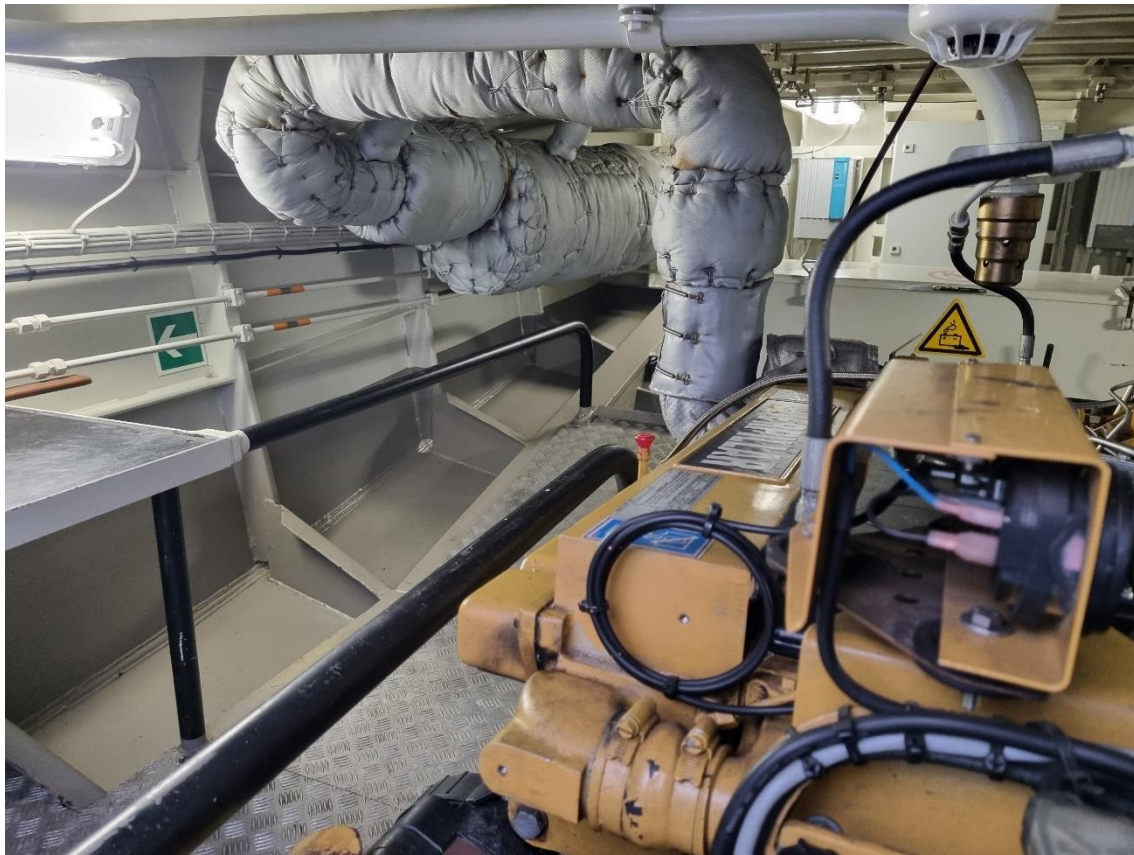
















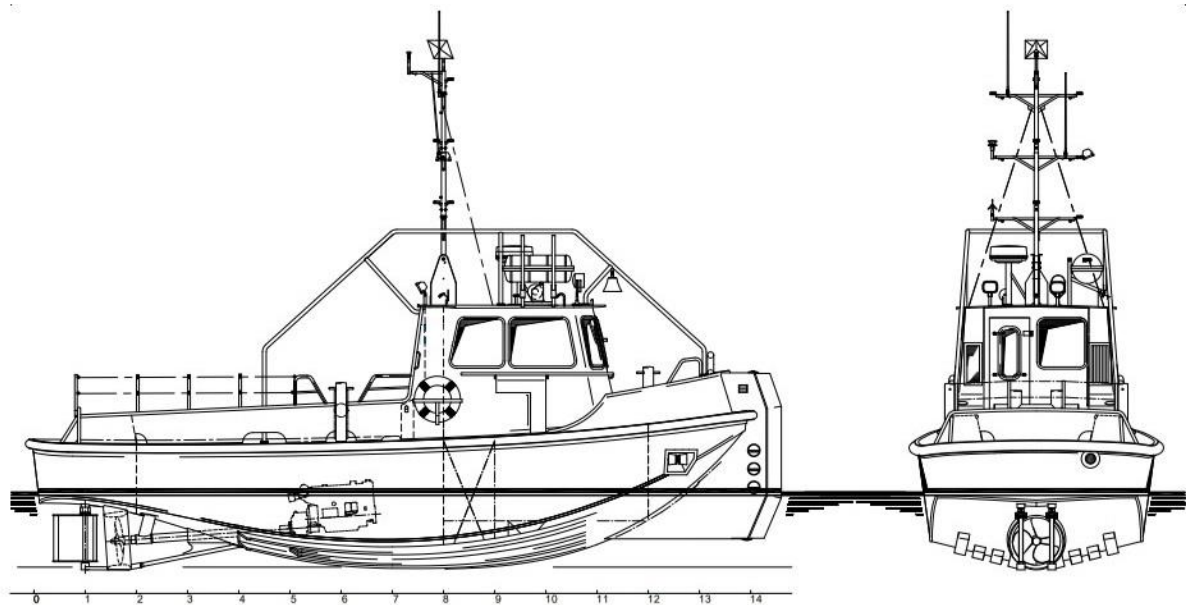




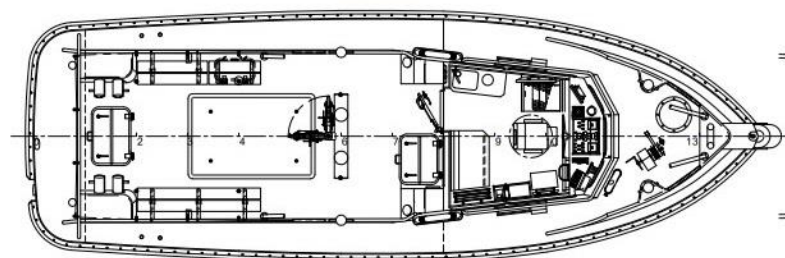




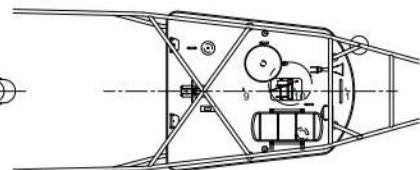




Maindeck



Topdeck



Below Maindeck

