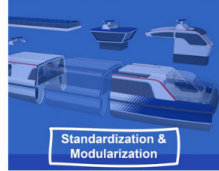




OSV Expertise Center



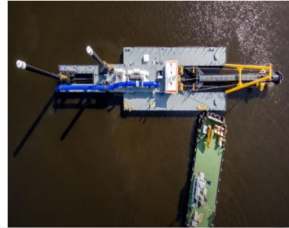
Design Development



Standardization & Modularization



Information Center



SharePoint

There is no limit to perfection in mastering new knowledge and skills



MDEM - Engineering Services Department



DAMEN OSV EXPERTISE CENTER

An example of successful cooperation

More than 17 years MDEM has been creating outstanding projects delivering high quality basic and detailed engineering for the maritime industry, as well as providing additional digital services for Damen Shipyards Group.

This is possible due to the team efforts of unique experts and experienced professionals contributing to the projects and doing their best to meet the expectations of our Clients and partners. Our key players and teamleaders know the key to success that is high-level expertise together with continuous

improvement and a teamwork as a basement for all our achievements.

The simple question follows – how to save the knowledge and distribute it within the company? And the solution is to use SharePoint sites

to collect and share the information as well as store it in a structured and user-friendly manner. Therefore, all MDEM departments use SharePoint sites as a main source of information containing standards and solutions required for the projects and training purposes. These sites are regularly updated by our trainers and lead engineers to set up and improve the knowledge database to share it with the colleagues. The knowledge database includes standard solutions, lessons learned inspired by projects results, presentations of technical innovations, new services overviews provided by the company managers. Additionally, it contains general standards and Class Rules, international conventions, shipyard standards, handbooks), etc. To make it user friendly we've implemented quick access to the most frequently used topics and created the site map for the fast search. The site map gives an idea of the database structure that could be easily acknowledged and used by engineers and trainees.

As being mentioned, the knowledge database in addition to technical information contains presentations of various Damen divisions and departments. No wonder our company cooperates with those departments, or they are even our Clients. In these notes we would like to introduce to our readers the OSV Expertise Center – such an important structure in Damen however not well-known. MDEM Project managers and leading experts collaborate on the regular basis with colleagues from Expertise Center for the wide range of disciplines. The main idea of the EC is to provide essential expertise and capabilities for project work, fostering the creation and implementation of technically standardized solutions.

During the project workflow our colleagues from the Expertise Centre share and use their knowledge about general project management, interface management and above all dedicated technical expertise to mitigate business risks and to contribute to a successful project. EC plays a leading role in standardization and modularization upstream and downstream.

OSV Expertise Center is the information center where technical questions can be asked, the product feedback is obtained and the lessons

learned are captured and converted into best practices to be used then during the tender and execution phases.

The Expertise Center is focused on the following points:

- Technical Specialists (providing technical expertise in complex technical issues related to Naval Architect, Mechanical & Systems, standardization, etc).
- Project Coordinators (coordination with all suppliers and comakers in Mechanical, Electrical & Automation, Steel system & outfitting issues).
- Manufacturing Engineers (support and supervision during the construction at shipyards).

MDEM team interacts with experts from the Design and Proposal, Standardization & Modularization, and the Information Center, creating concepts and proposals for the Clients. In order to be on the same page with colleagues and to keep track on the innovations, our engineers and managers regularly communicate with the managers of the Expertise Center. They share the insights, inform about the updated standards in use and investigations for raising work efficiency, discuss the challenges on various projects, and get together to think about the best solutions for upcoming projects.

In addition, our lead engineers and project managers cooperate with managers of the Expertise Center for the naval architect issues, general arrangement, complicated and very specific calculations, Class approval, equipment supply, yard support and so on. Our experts are requested either for ship concept or technical proposals to the Client, as well as for the scope definition, general calculations, ship construction technology, etc.

No doubt that there is no limit for improvement in mastering new knowledge and development. Moreover, everyone acknowledges the Damen principles, such as “teamwork is key to success” and also “we trust our colleagues and partners and are open about what we do and how we do it”. So, the interaction with OSV Expertise Center team is a good example of successful cooperation. <<