

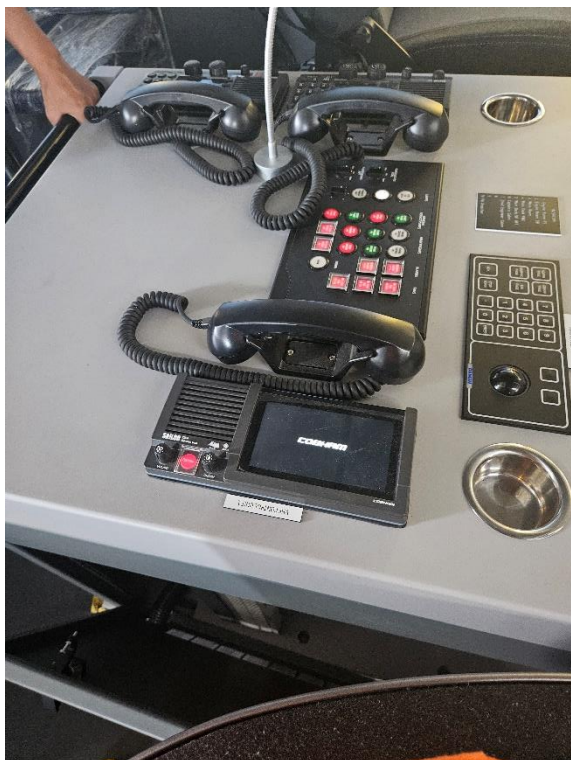
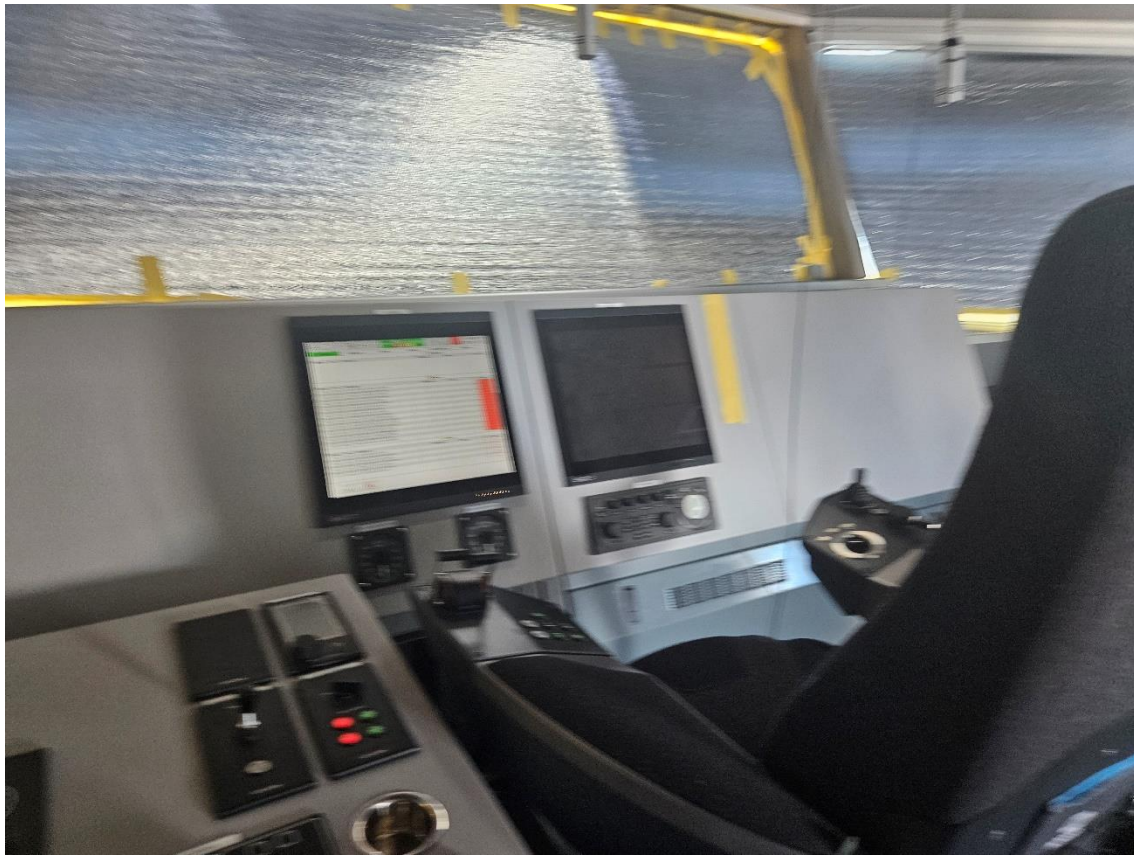
This CTV is suitable for transport of personnel and cargo. The Twin Axe design ensures low resistance, high sustained speed in waves and superior sea keeping characteristics.

Type	DAMEN FCS 2710
Built	2025, new and never used
Dimensions	26.80 x 10.50 x 4.30 m
Draft	2.30 m
Material	Aluminium, both hull and superstructure
Tonnage	GRT 235
Deadweight	30 tonnes maximum
Cargo deck area	90 m ²
Deck load	1.5 t/m ²
Deck cargo	20 tonnes maximum
Propulsion	2x Fixed pitch propeller
Main engines	2x Caterpillar, type C32 TTA
Output	2899 bhp total
Gearboxes	2x Reintjes, type ZWVSA (two speed)
Bow thrusters	2x 64 kW, hydraulically driven
Speed	± 25 kn
Range	1.200 nm
Generator sets	2x 38 ekW
Network	24 V dc, 400/230 V 50 Hz, AC
Fuel transfer pumps	2x pump, electrically driven
Engine room ventilation	One fan in each engine room, 8000 m ³ /hr each
Air-conditioning	89.000 BTU/hr
Fire extinguishing	Novec 1230 in engine rooms
Fendering	Heavy-duty bow fender, rubber 'D' type at sides
Tank capacities	Fuel oil 30.5 m ³
	Fresh water 3.5 m ³
	Sewage 0.5 m ³
	Bilge water/dirty oil 0.4 m ³
Accommodation	At main deck personnel area, crew cabins, wet gear room, pantry, messroom, sanitary spaces. Storage at lower deck.
Passenger capacity	24 (industrial personnel)
Crew capacity	4
Nav./comm. equipment	Radar, AIS, compass, autopilot, echo sounder, GMDSS A2
Class	Bureau Veritas I ✕Hull •MACH Light Ship / Fast Utility Vessel Sea Area 3



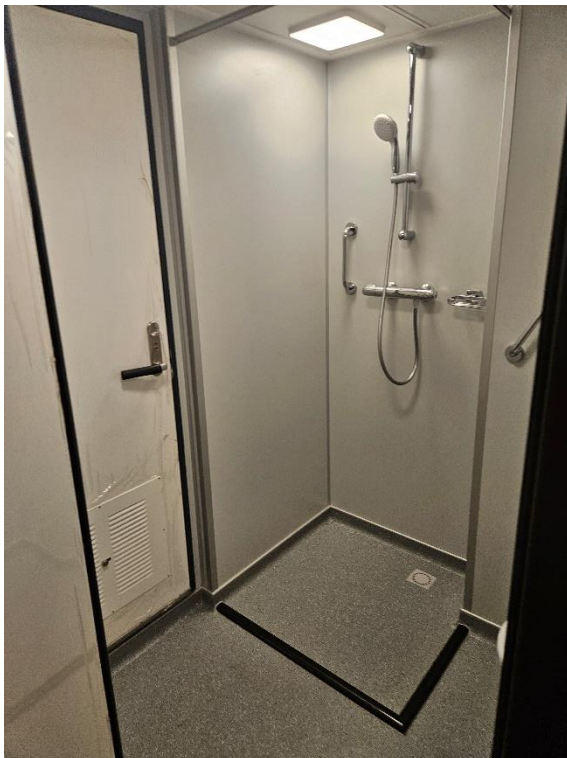
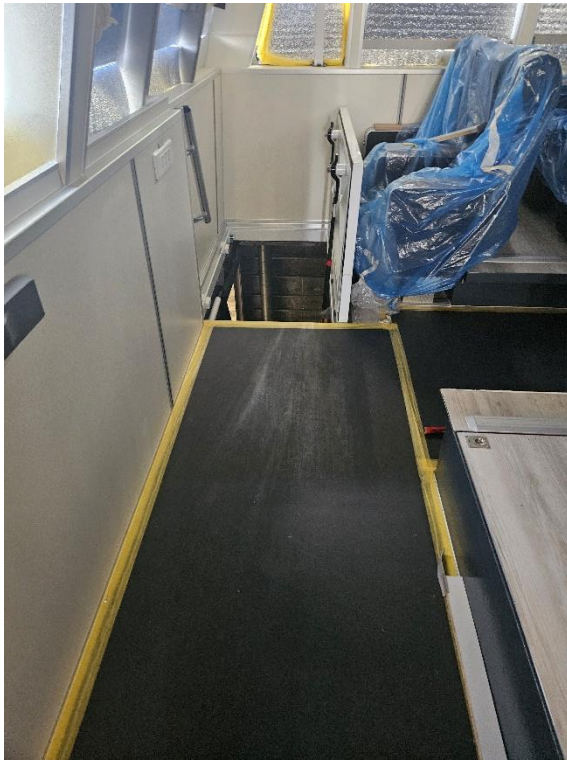


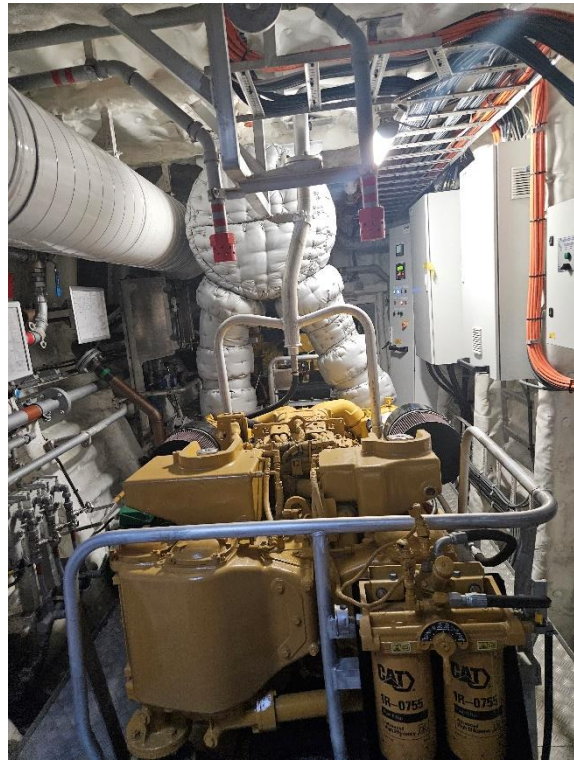
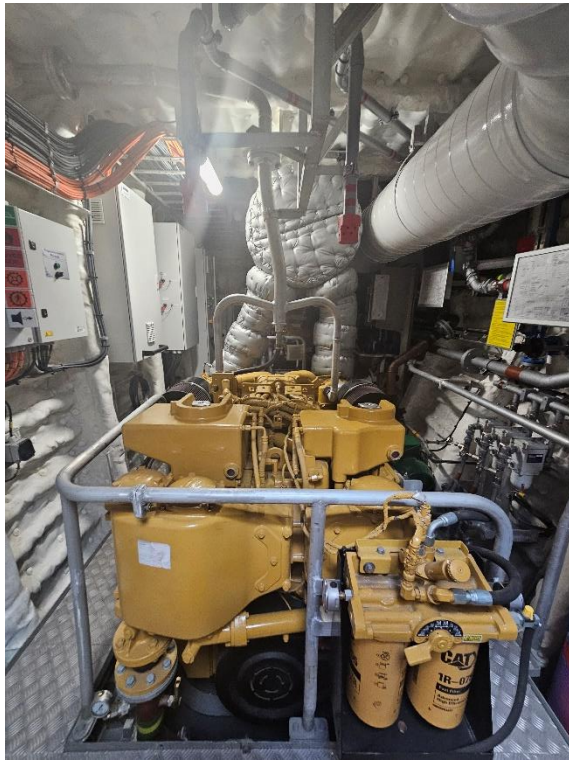


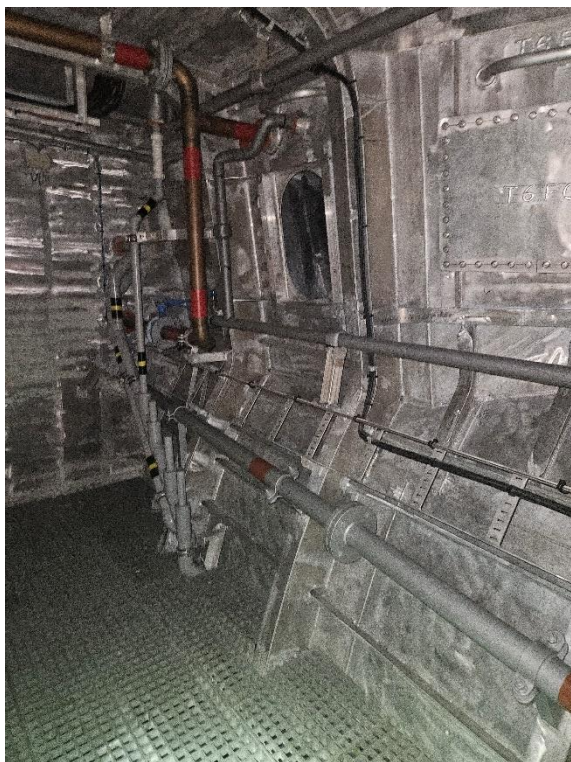












Damen Fast Crew Supplier[®] 2710

TWIN AXE

