

Multipurpose Damen Fast Crew Supplier 2610, completely fitted out for 12 pax transport to and from offshore windfarms. This CTV has been kept in very good condition and is immediately available.

Type	DAMEN Fast Crew Supplier 2610	
Built	2013	
Dimensions	25.75 x 10.40 m	
Draft	2.20 m	
Hull material	Aluminium both hull and superstructure	
Tonnage	GRT 81.58	
Displacement	80 tons (50% consumables) 102 tons fully loaded	
Propulsion	Two fixed pitch propellers	
Main engines	2x Caterpillar, type C32 TTA	
Output	2410 bhp total at 2000 rpm	
Gearbox	Reintjes, type VWVS 440/I (two speed)	
Speed	26 knots sprint 22 knots cruising	
Bowthruster	2x 50 kW	
Generators	2x Caterpillar, type C2.2T	
Output	2x 28 kVA, 50 Hz, 230/400 V	
Fuel oil separator	Separ SWK 2000	
Deck crane	HEILA, type HLM 20-2S, capacity 2.2 tonnes @ 8.5 m	
Deck carrying capacity	15 tonnes	
Deck strength	1.5 ts/m ²	
Clear deck space	90 m ²	
Tank capacities	Fuel oil	22.5 m ³
	Fresh water	2x 2 m ³
	Dirty oil	0.34 m ³
Passenger capacity	Heated and air-conditioned passenger saloon with suspension seats for 12 persons, complete with work tables and UK & Euro 230V socket outlets.	
Accommodation	Galley area with all amenities and heads compartment with shower. Crew sleeping accommodation in 2x single cabins and 2x twin cabins.	
Nav./comm. equipment	Magnetic compass, satellite compass, radar, GPS, autopilot, AIS, echosounder, SSB, DSC, Navtex, VHF	
Class	Bureau Veritas I ✕Hull •MACH Light ship/Fast Utility Vessel Sea Area 3	
Remark	MCA Category I – up to 150 miles from a safe haven Well maintained vessel	

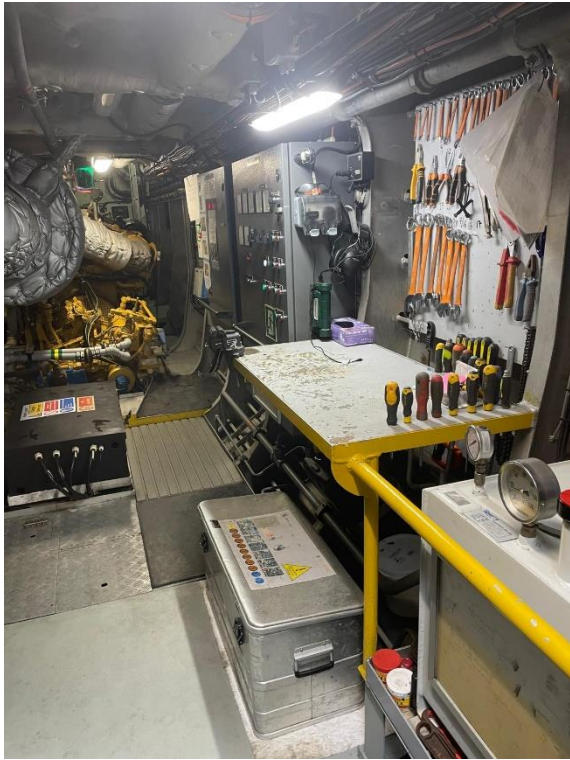


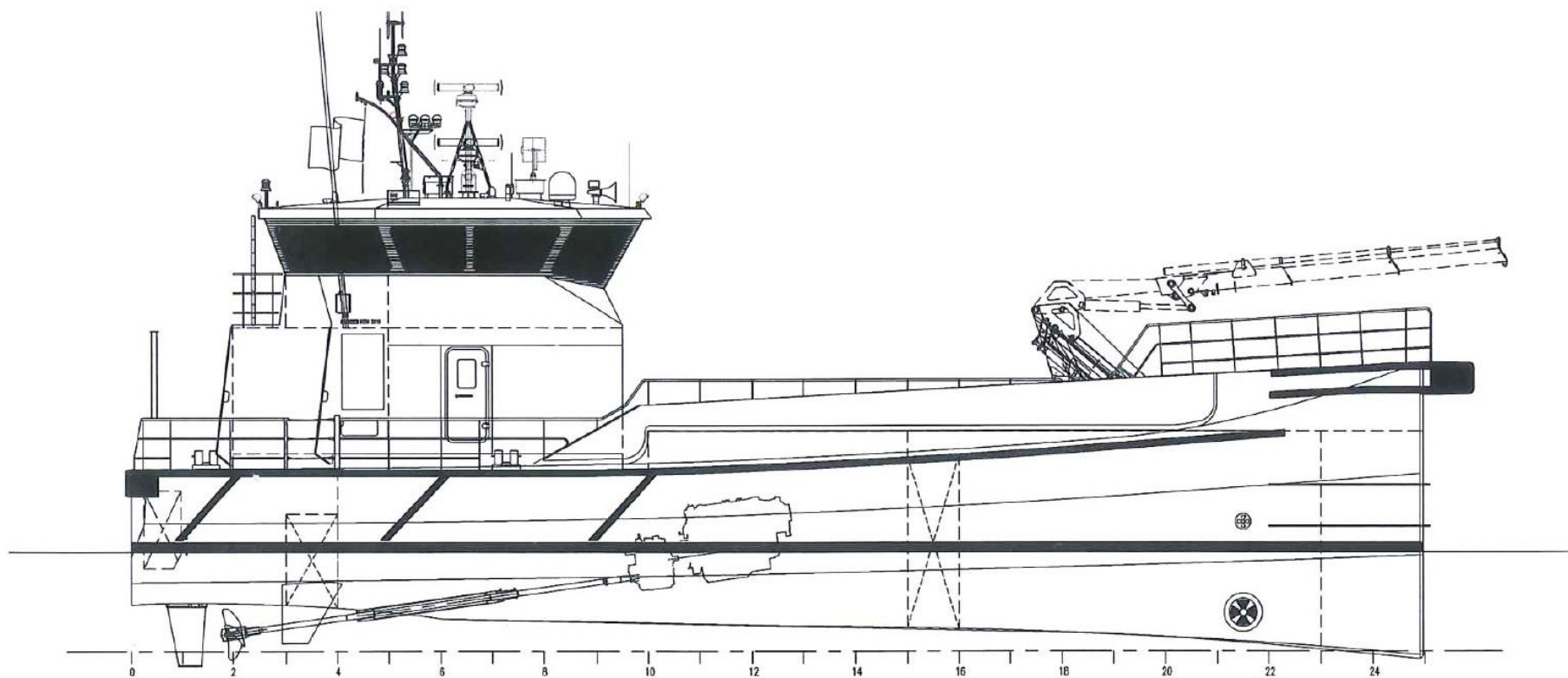




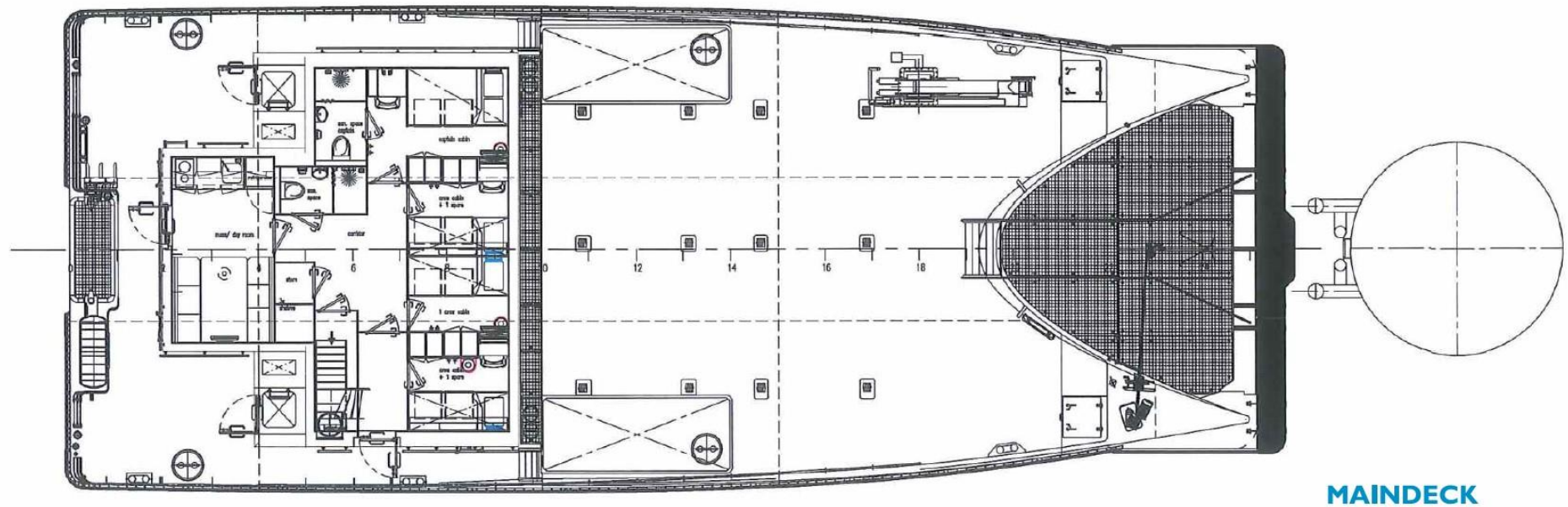


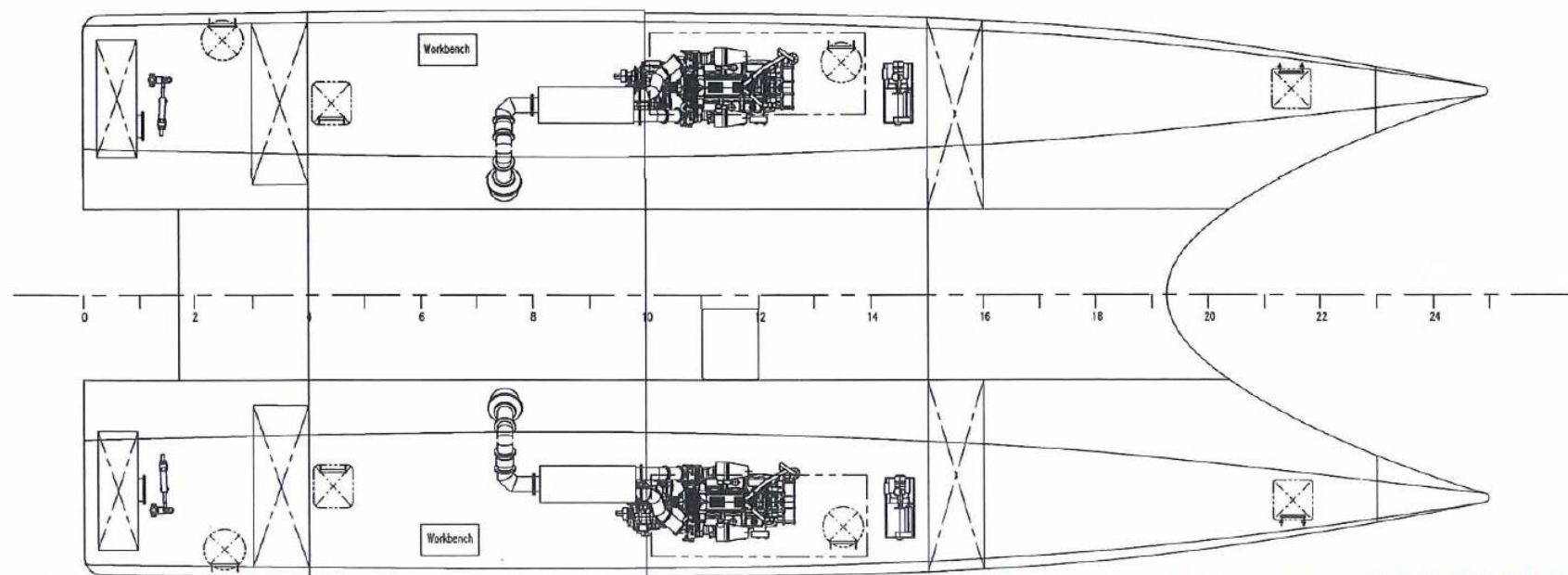


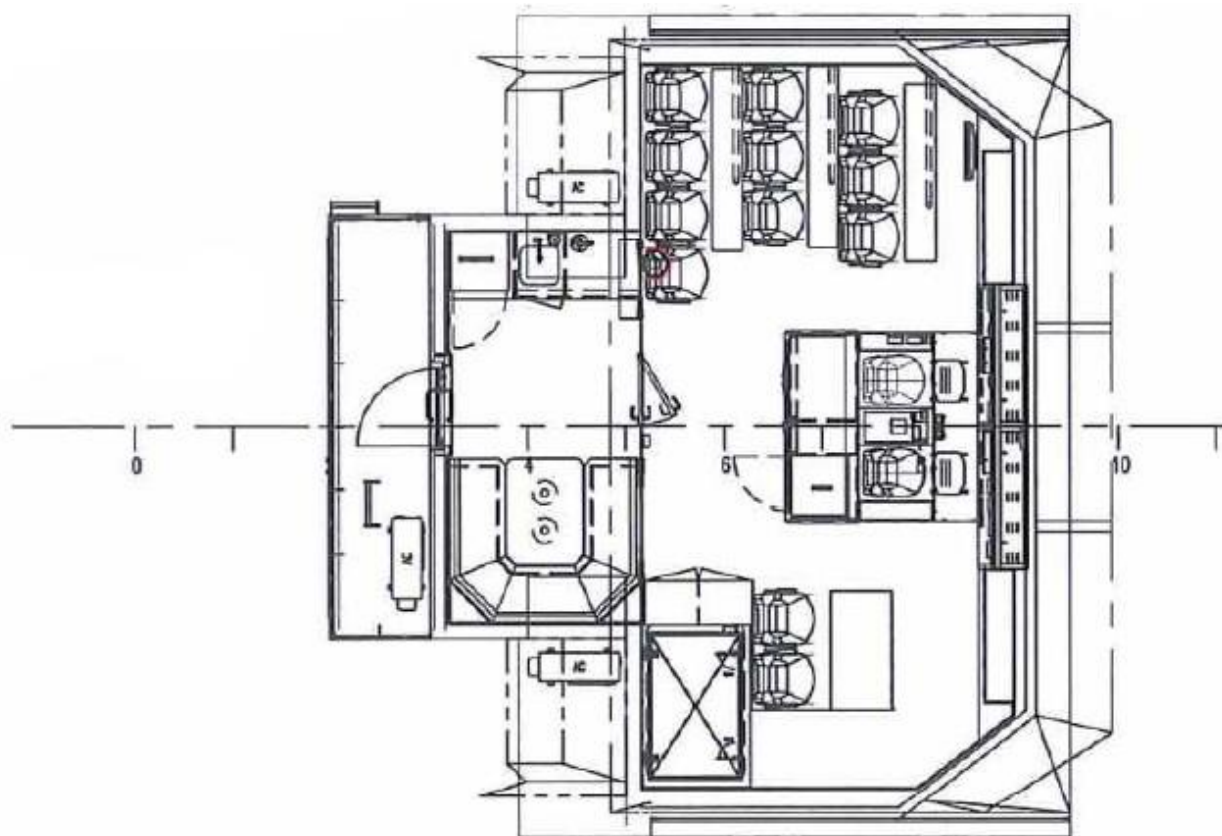




PROFILE



**BELOW MAINDECK**

**BRIDGE-DECK**