

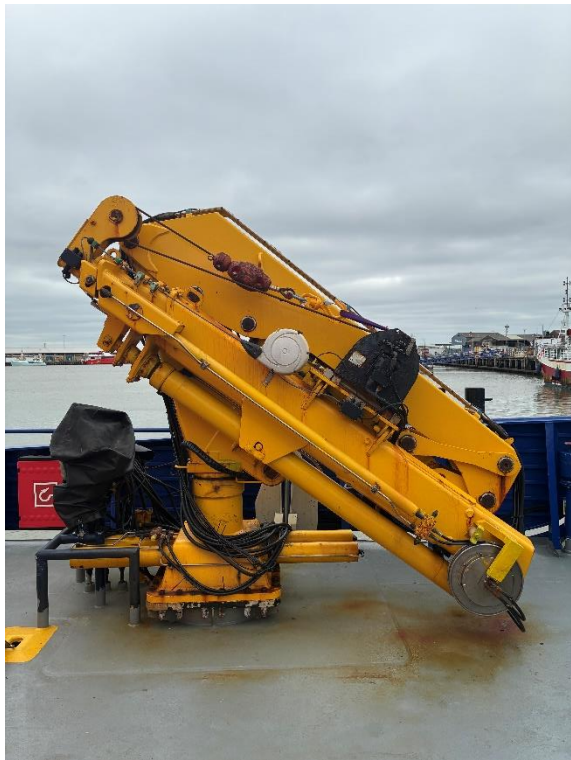
Multipurpose Damen Fast Crew Supplier 2610, completely fitted out for 12 pax transport to and from offshore windfarms. This CTV has been kept in very good condition and is immediately available.

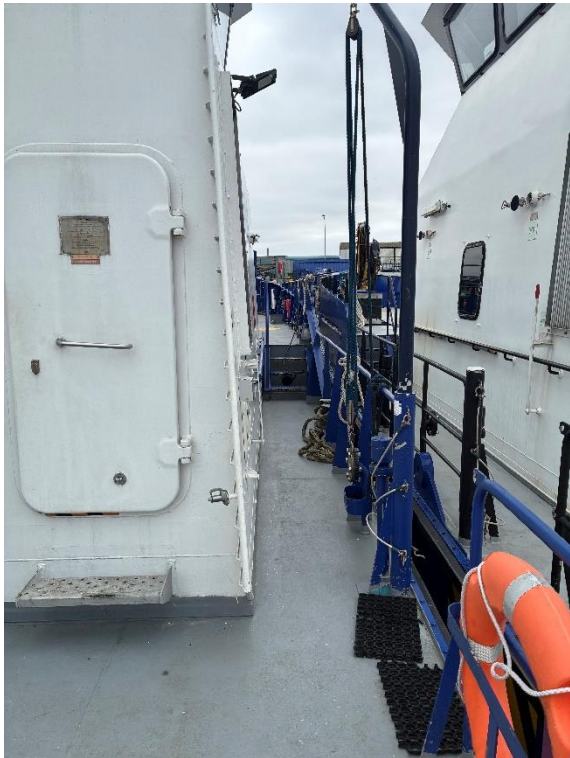
Type	DAMEN Fast Crew Supplier 2610	
Built	2014	
Dimensions	26.20 x 10.40 x 2.90 m	
Draft	1.98 - 2.20 m max.	
Material	Aluminium both hull and superstructure	
Tonnage	GRT/NRT 81.58	
Propulsion	2x Fixed pitch propellers	
Main engines	2x Caterpillar, type C32 TTA/B	
Output	2400 hp total	
Speed	24.5 knots (max)	
Gearbox	2x Reintjes, type ZWVS 440/1 (two speed)	
Generators	2x Caterpillar, type C2.2T	
Output	22.5 kW each	
Forward deck	90 m ²	
Cargo load	15 tonnes	
Deck equipment	Anchoring arrangement in accordance with class HEILA 20-4S deck crane Multiple lashing points	
Tank capacities	Fuel oil	22.000 ltrs
	Fresh water	3.600 ltrs
	Waste water	500 ltrs
Passenger capacity	12 passengers, 4 crew	
Accommodation	4x single berth cabins + 4 spare bunks, messroom, day-room, pantry, toilet and shower facilities.	
Nav./comm. equipment	According to class regulations	
Class	Bureau Veritas I ✕HULL •MACH Light ship / Fast Utility Vessel Sea Area 3	

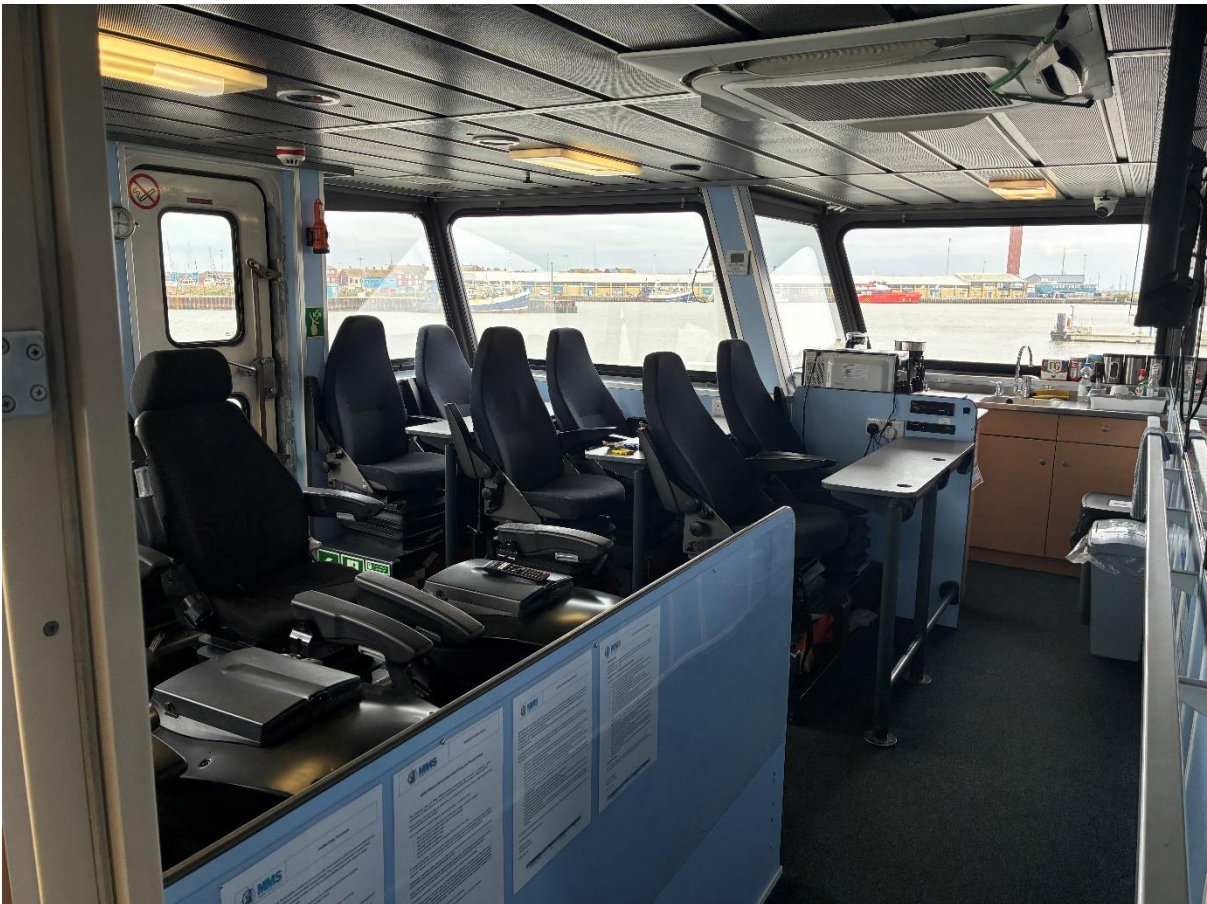


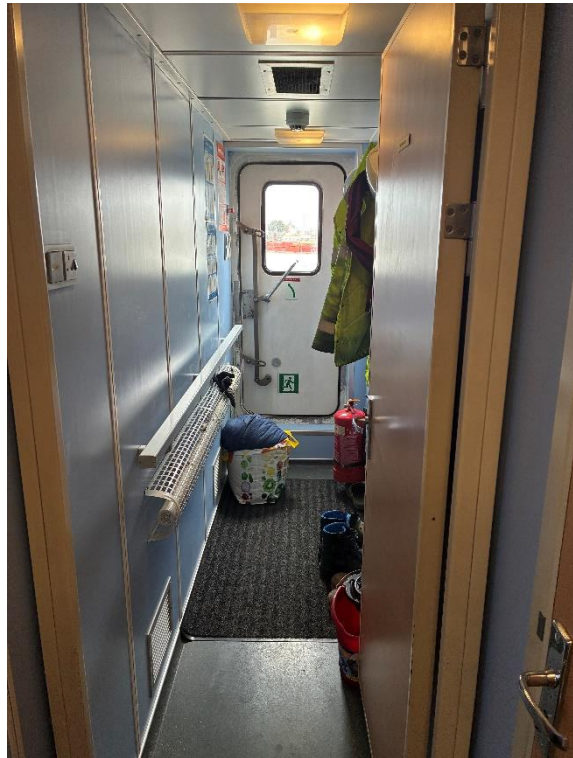
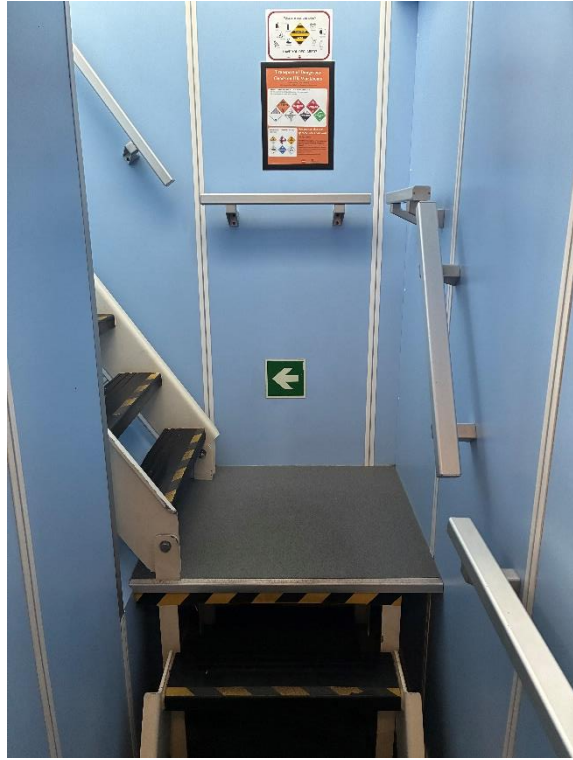
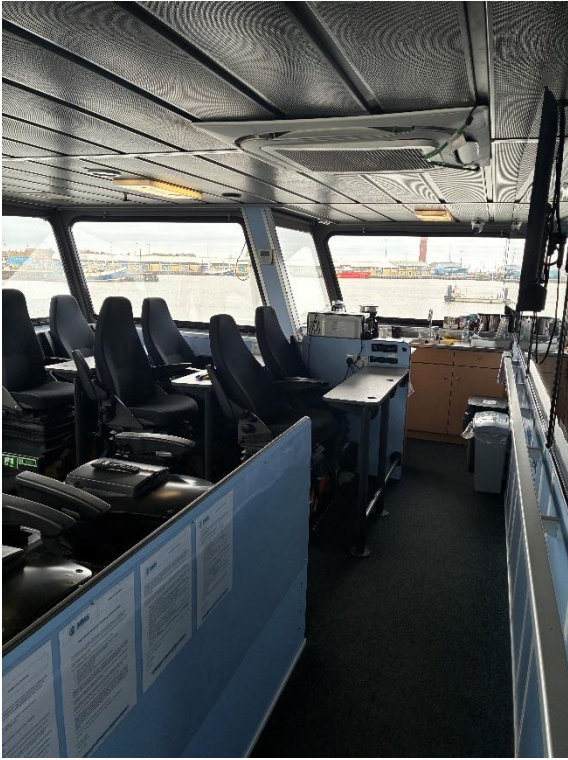


DAMEN CREW TRANSFER VESSEL

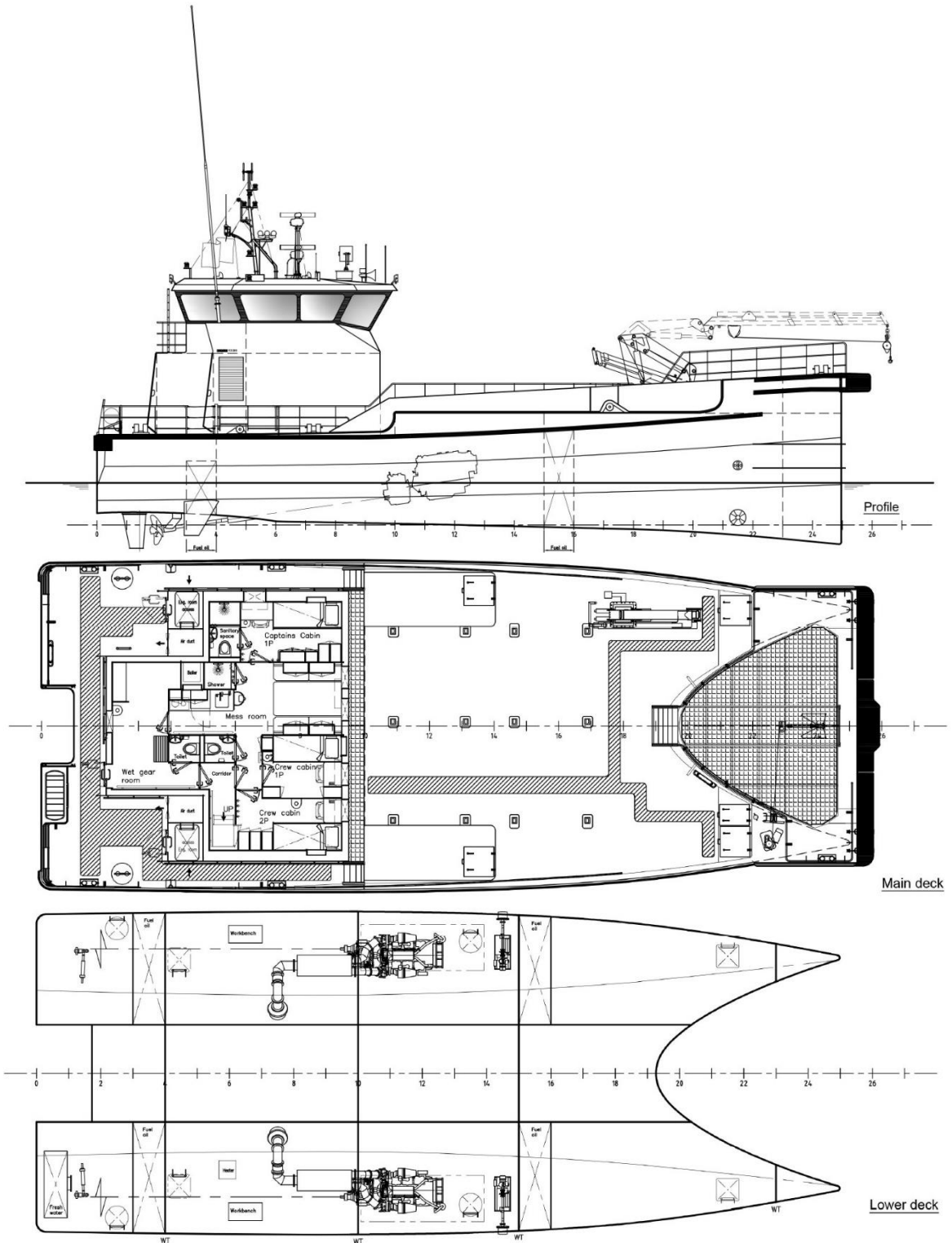








DAMEN CREW TRANSFER VESSEL



DAMEN CREW TRANSFER VESSEL

