

*Steel welded floating drydock, for vessels up to 12.000 t and up to 75 t/m keel load.
Equipped with Control Room, 11kV shore connection, guide winch system.
Dock is presently not operational.*

Type	Floating drydock	
Built	1963, the Netherlands	
DIMENSIONS:		
Length over all	175.27 m	
Beam over all	32.92 m	
Depth to upper deck	13.41 m	
Depth to drydock floor sides / CL	3.21 / 3.71 m	
Max. draught	12.20 m	
Min. freeboard to upper deck	1.00 – 1.20 m	when fully submerged
Min. freeboard to dock floor	0.15 – 0.30 m	
Length over keel blocks	165.25 m	
Internal width at upper deck level	25.80 m	
Internal width at dock floor level	25.80 m	
Max. draught over 1.3 m blocks	7.40 m	
Max. draught above drydock floor	8.70 m	
Number of tanks in pontoon	16 pcs	

DIMENSIONS

(vessel in drydock):

Max. length	170.00 m
Max. width	25.25 m
Max. displacement	12.000 t
Max. draught (on keel blocks)	7.00 m
Max. draught (on drydock floor)	8.30 m
Max. trim	3.00 cm/m

CAPACITIES:

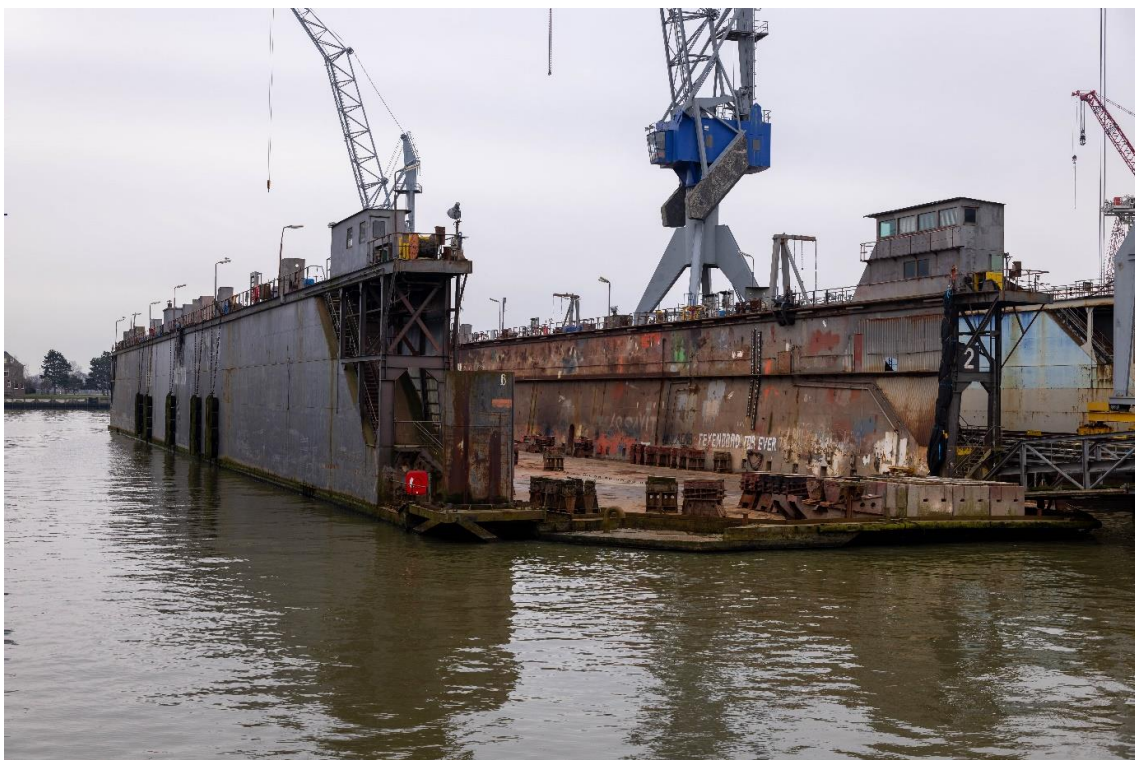
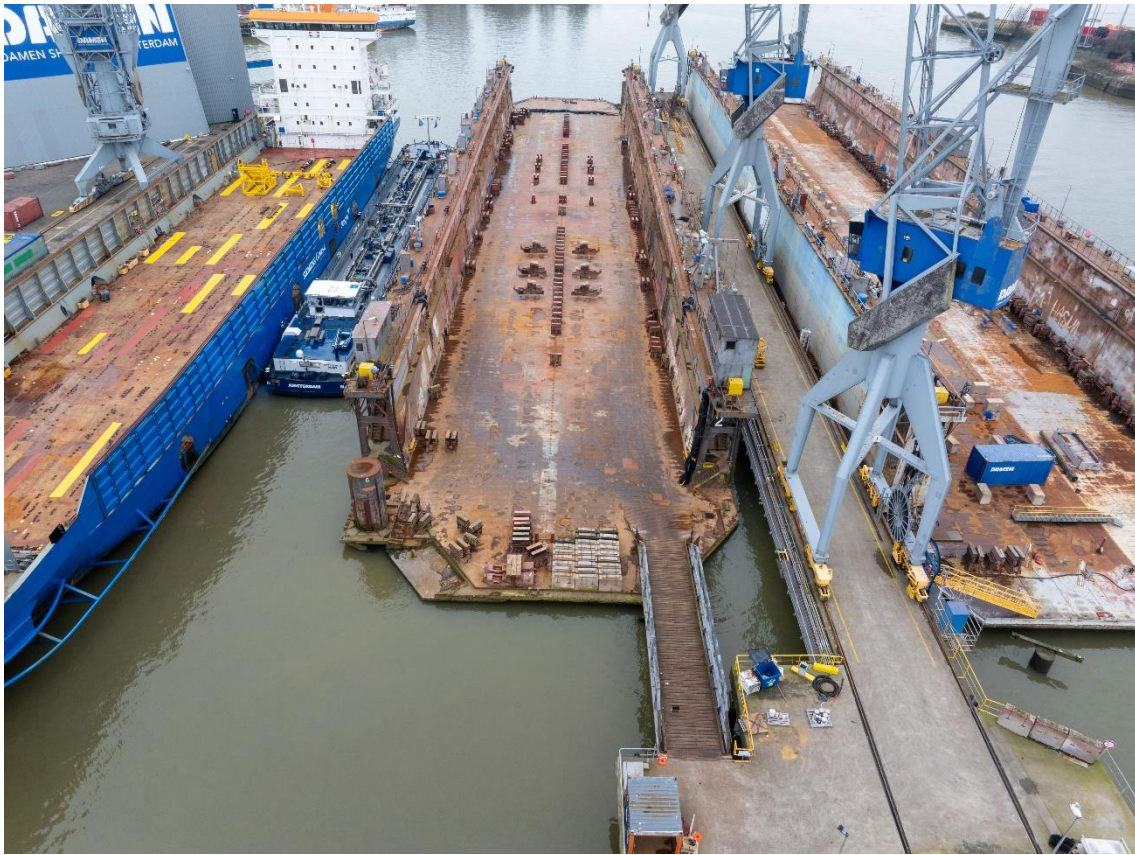
Max. lifting capacity	12.000 t	(0,3m freeboard to dock floor)
Max. load on center line	75 t/m	
Total no of keel blocks	153 pcs approx.	
Max. load dock floor	10 t/m ²	
Lightship weight of drydock	3.392 t	
Minimum drydock own draft	0.65 m	

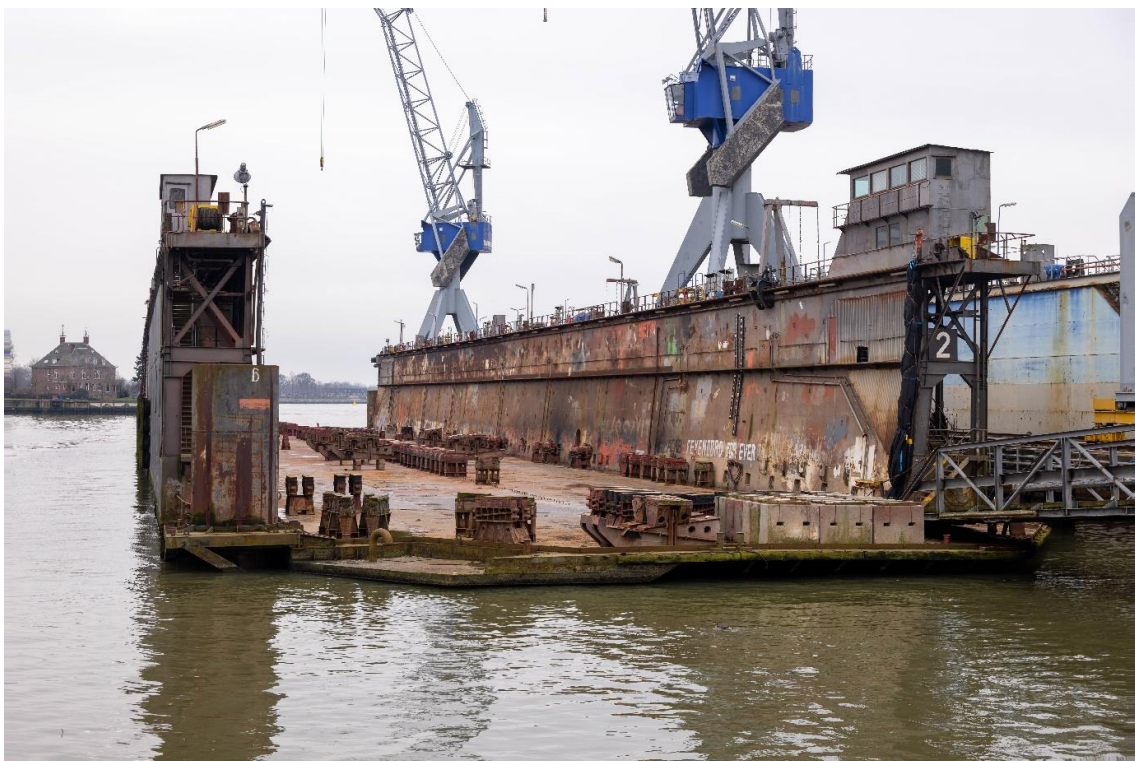
BALLAST SYSTEM:

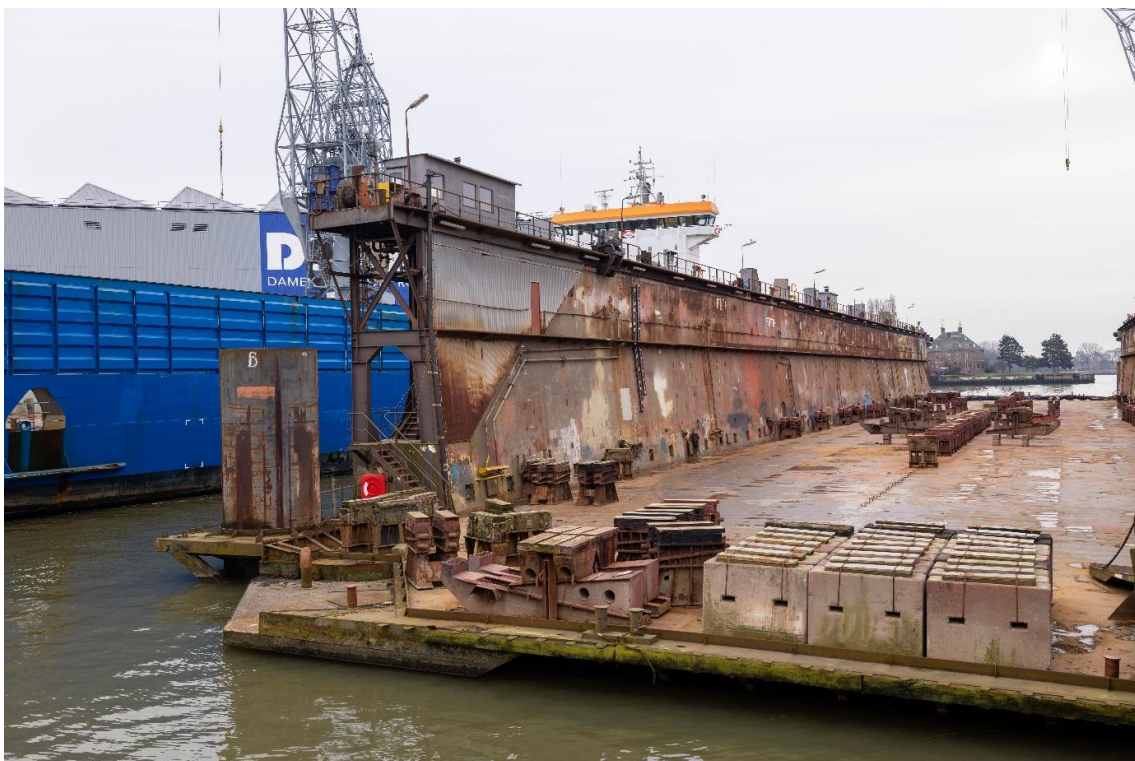
Ballast volume pontoon	± 18.800 m ³
Ballast volume side walls	5.700 m ³
No. of pumps / pumphrooms	4 / 4 pcs

E-POWER SYSTEM:

Voltage	400 V/50Hz
Capacity total	± 310 kVA
Fuel day tank	0.25 m ³
Fuel storage tank	11.00 m ³
FO separator	1 pcs
Layout	Installed in sound proof 20ft canopy, dedicated starting batteries, AVR and power management system.
Remark	Dock is presently NOT in operational condition.



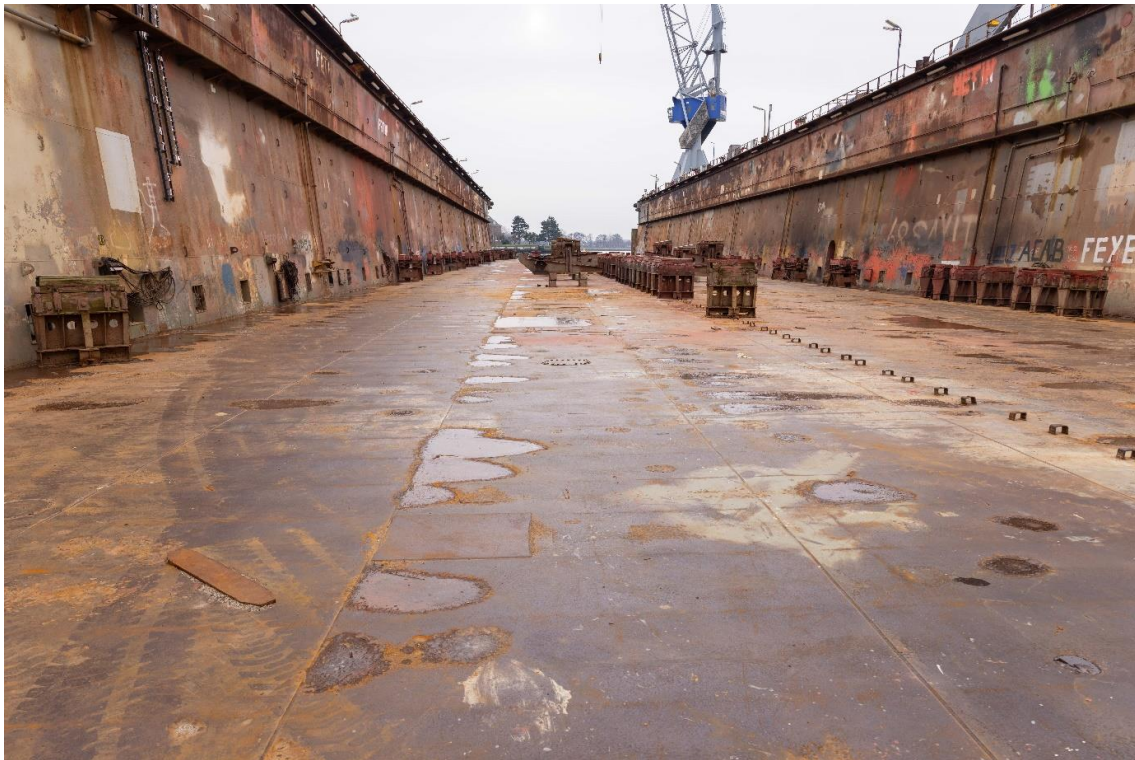


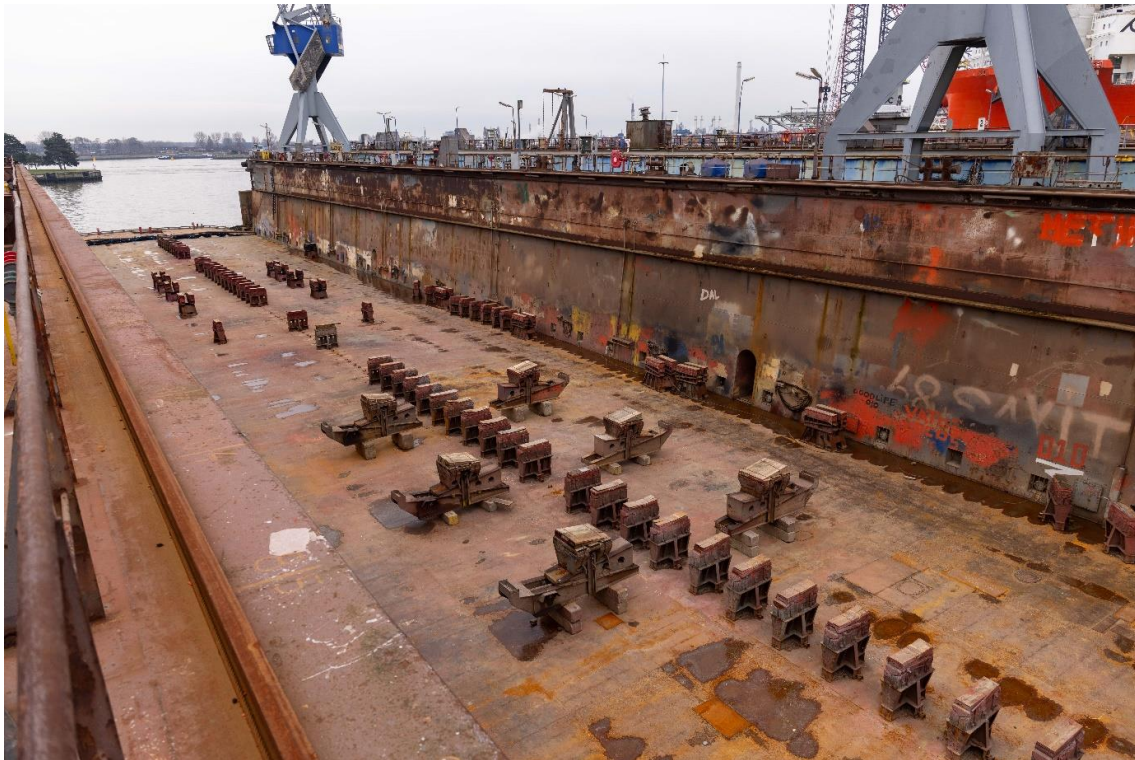




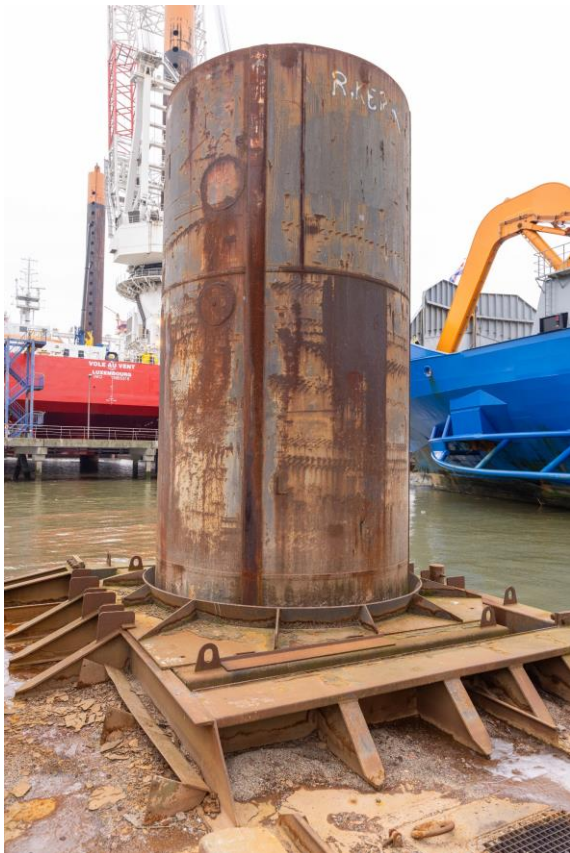
FLOATING DRYDOCK







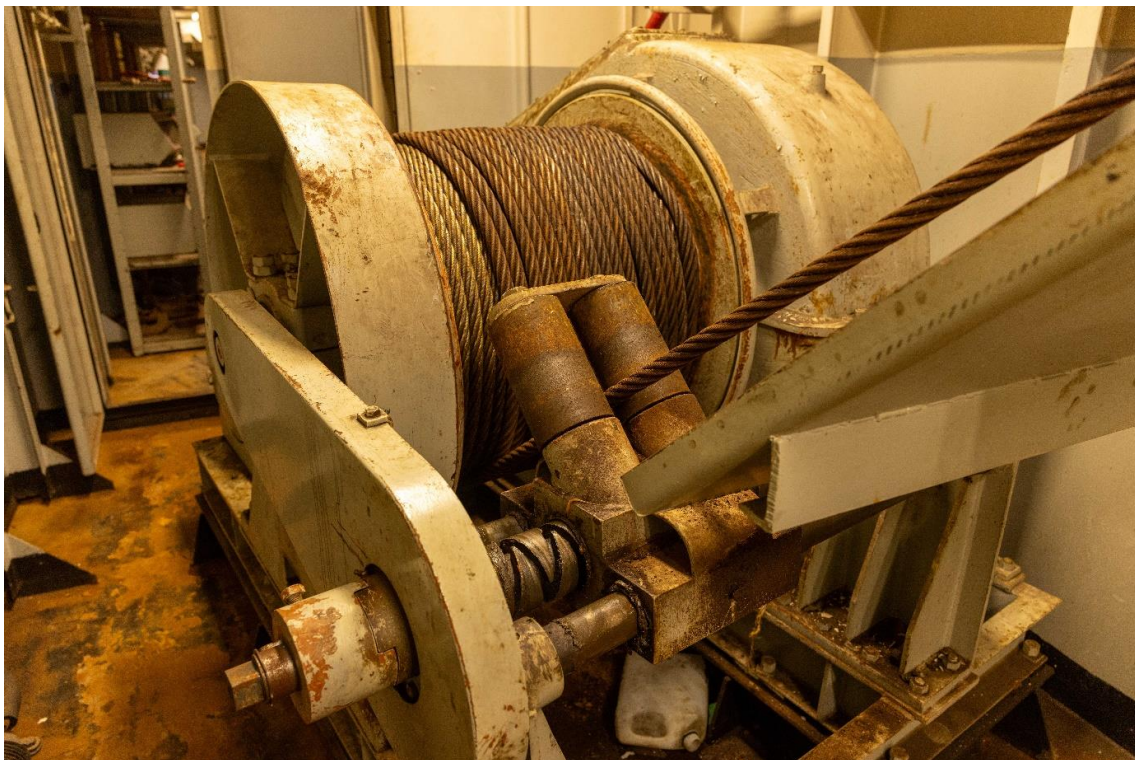


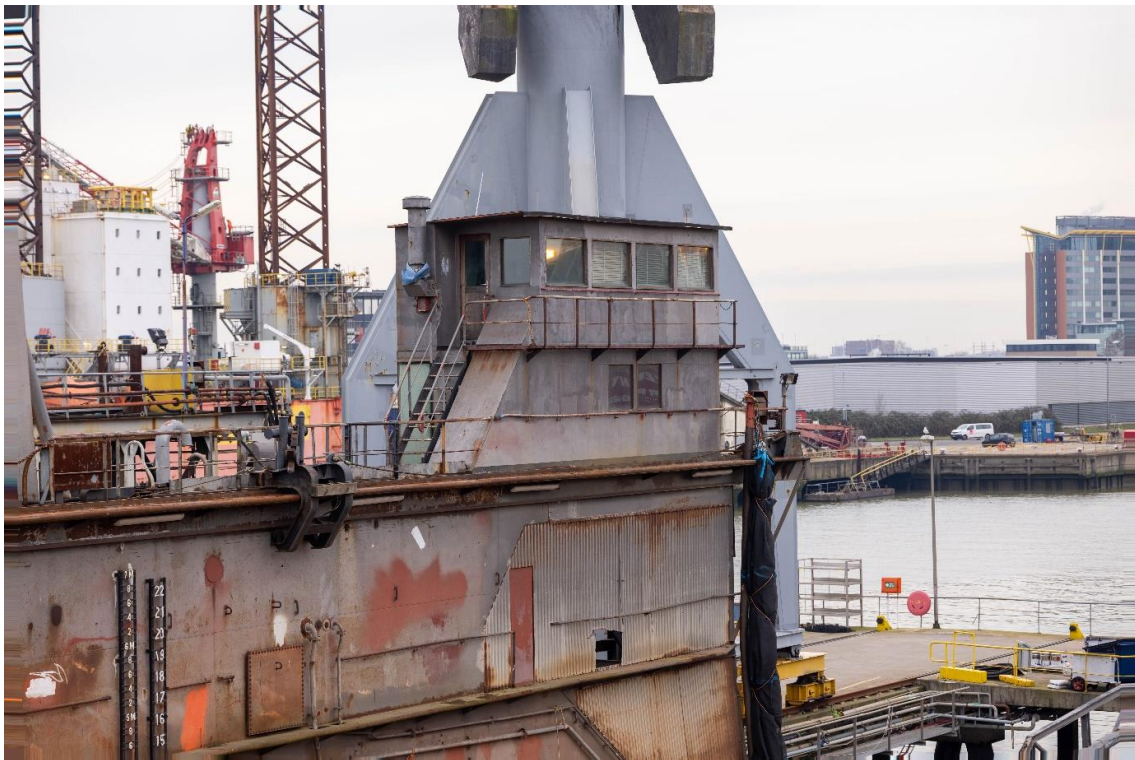


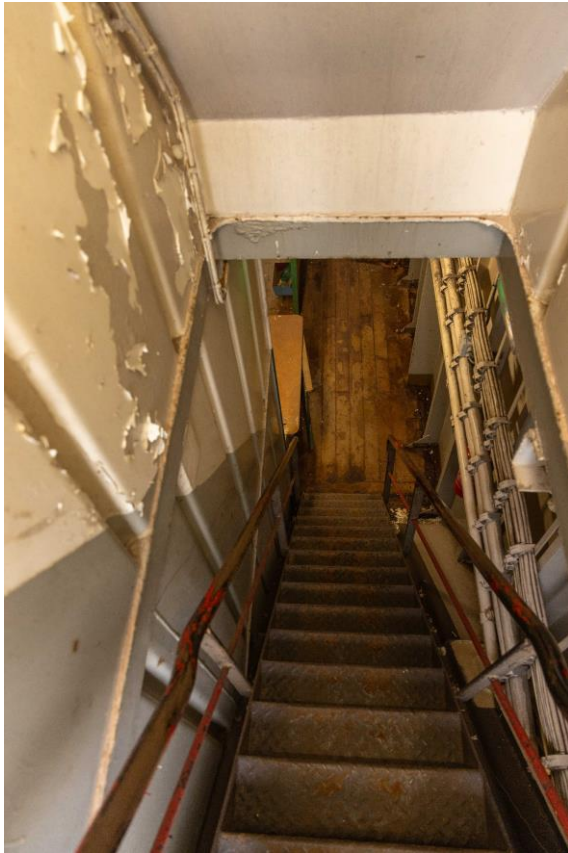
FLOATING DRYDOCK

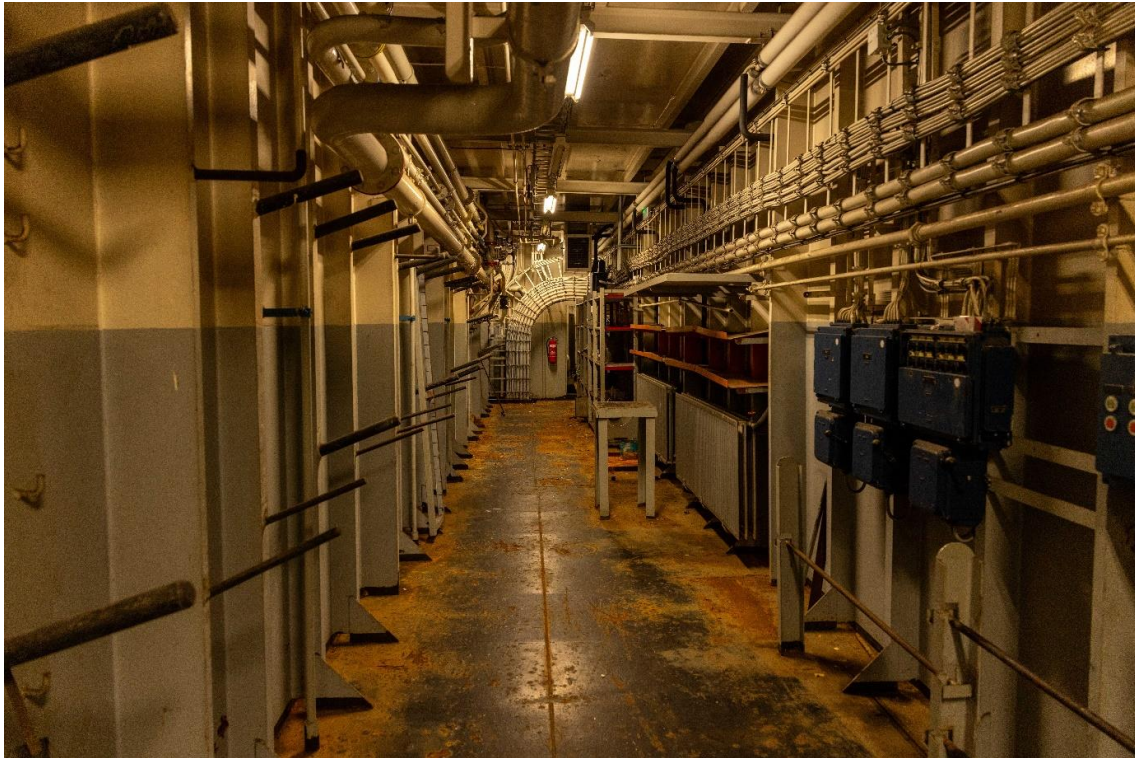


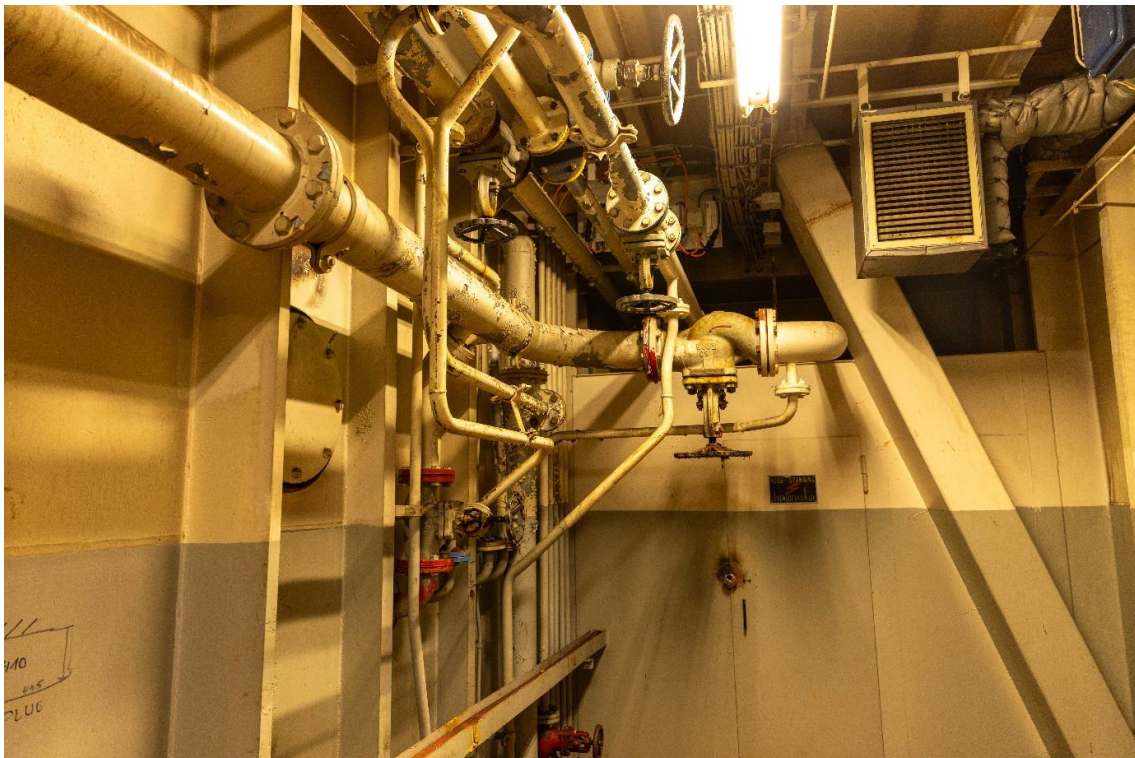


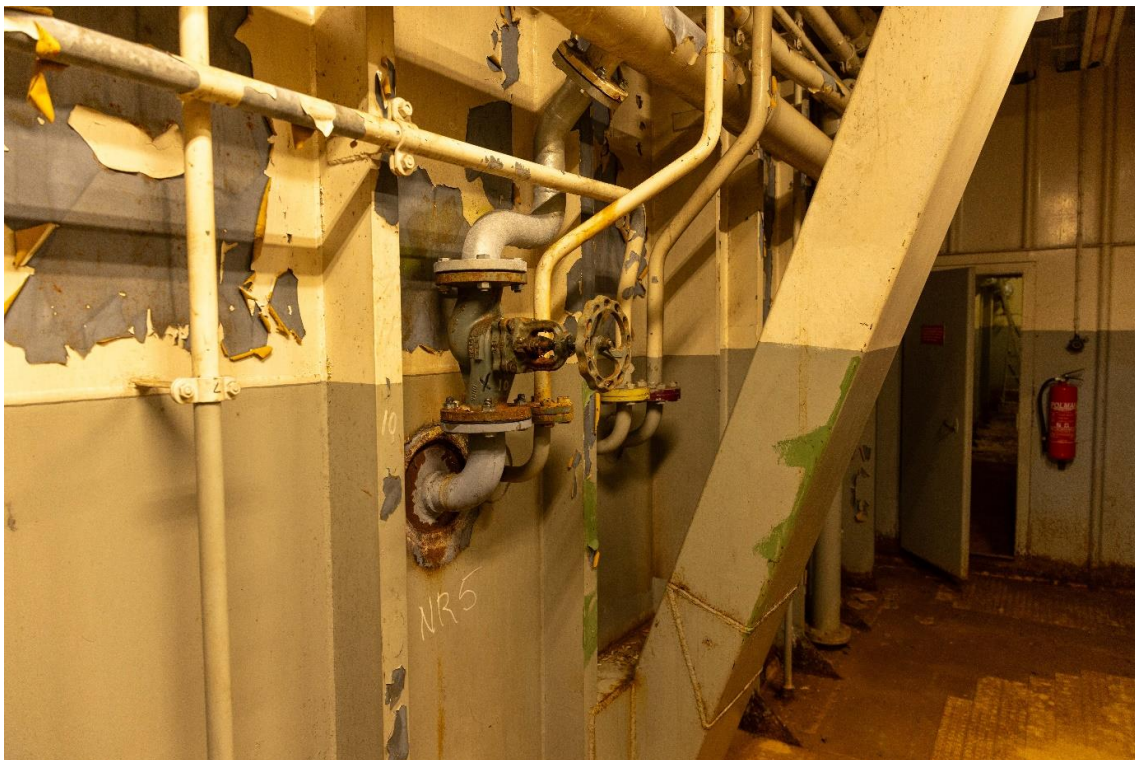


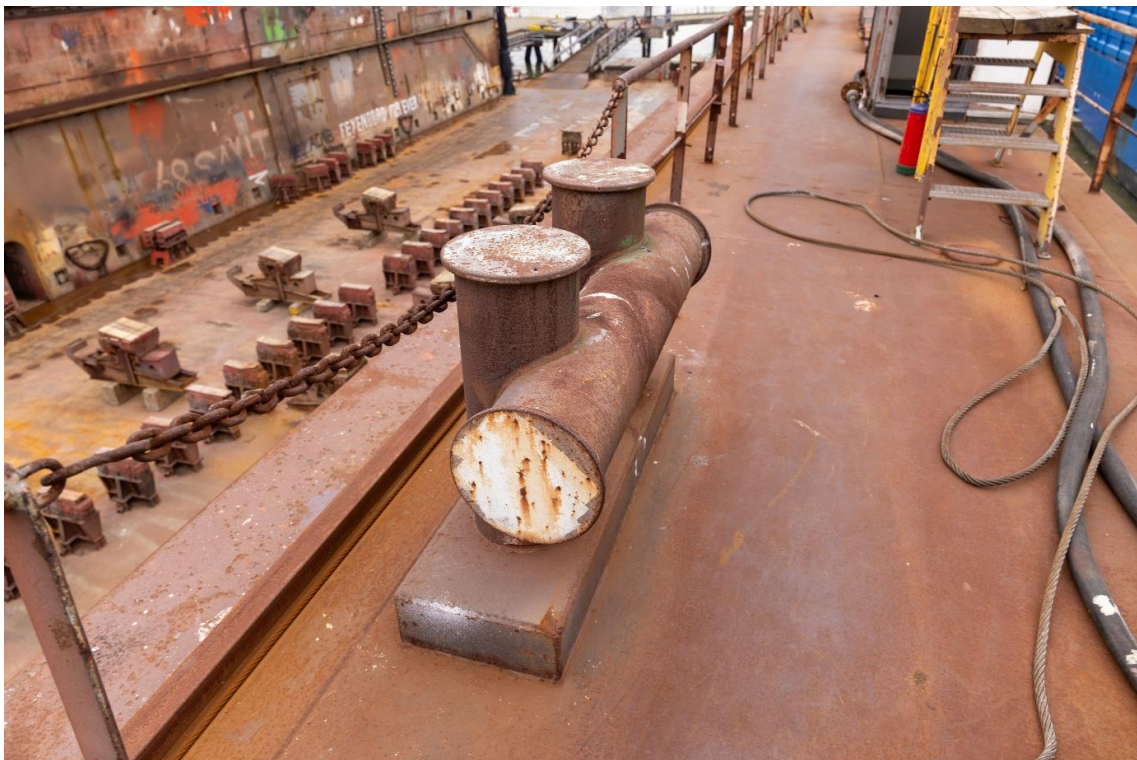


























FLOATING DRYDOCK

