

This monohull crewboat (and sister vessel) are HSC compliant and capable to transfer 200 passengers with a service speed of 22 knots to any offshore destination.

Type	Monohull crewboat (HSC Compliant)
Built	2012, Indonesia
Dimensions	50.00 x 9.30 x 4.13 mtrs
Draft	1.90 mtrs max.
Hull material	Aluminium
Tonnage	GT 525 / NT 158
Propulsion	3x Propellers
Main engines	3x Caterpillar, type 3512 C
Output	7.395 hp total at 2300 rpm
Speed	25 knots trial speed 22 knots service/economical speed
Fuel consumption	1.250 ltrs/hr max
Bowthruster	1x, electro-hydraulic 170 hp
Electric generator	Caterpillar
Output	250 hp, 440 V, 3 Ph, 50 Hz, 0.8 P.F., 4 wires
Aux. engine	Caterpillar C6.6
Output	175 kW
Aux. equipment	2x reefer plugs, 380V/50Hz
Clear deck space	120 m ²
Deck cargo capacity	30 tons (deck strength 1 ton/m ²)
Tank capacities	Fuel oil 51 tons Fresh water 44 tons Lub oil 400 litres Sludge 400 litres
Passenger capacity	200 reclining seats, 6 toilets, 10 crew bunks
Nav./comm. equipment	As per class/SOLAS regulations
Class	ABS & BKI
Remark	Vessel fitted with a fully equipped medical room. Sister vessel also available.

















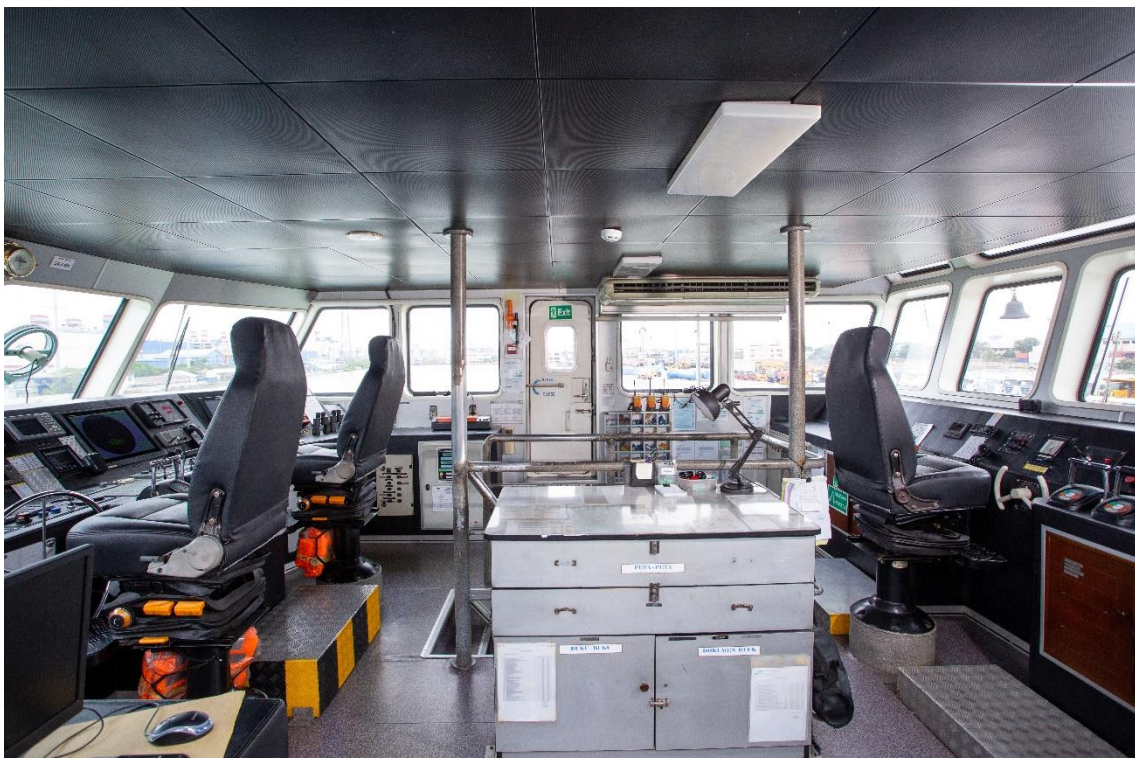




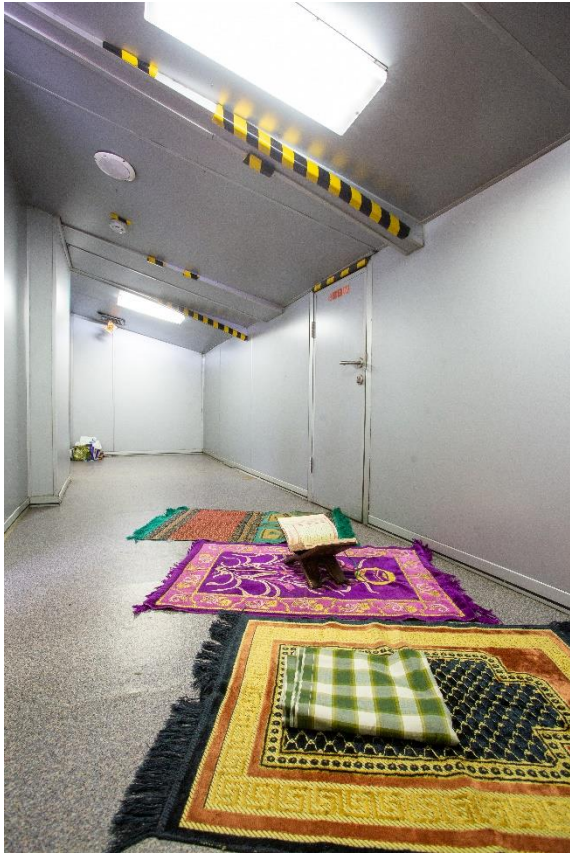




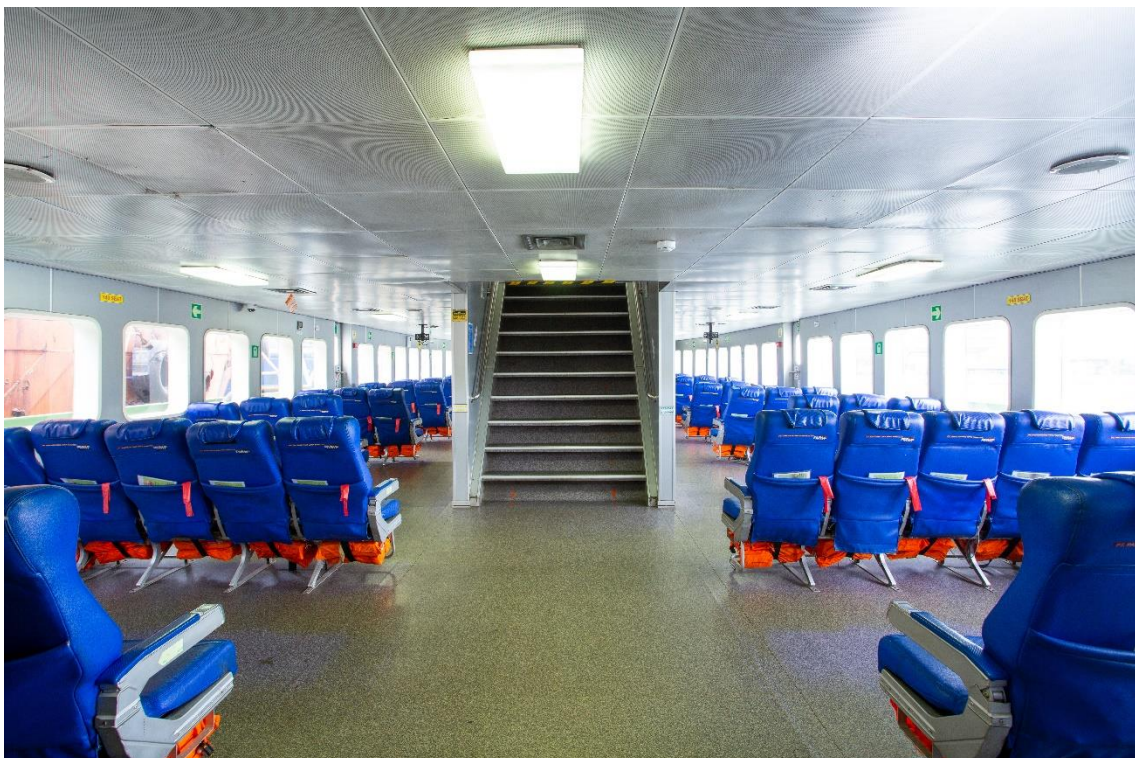


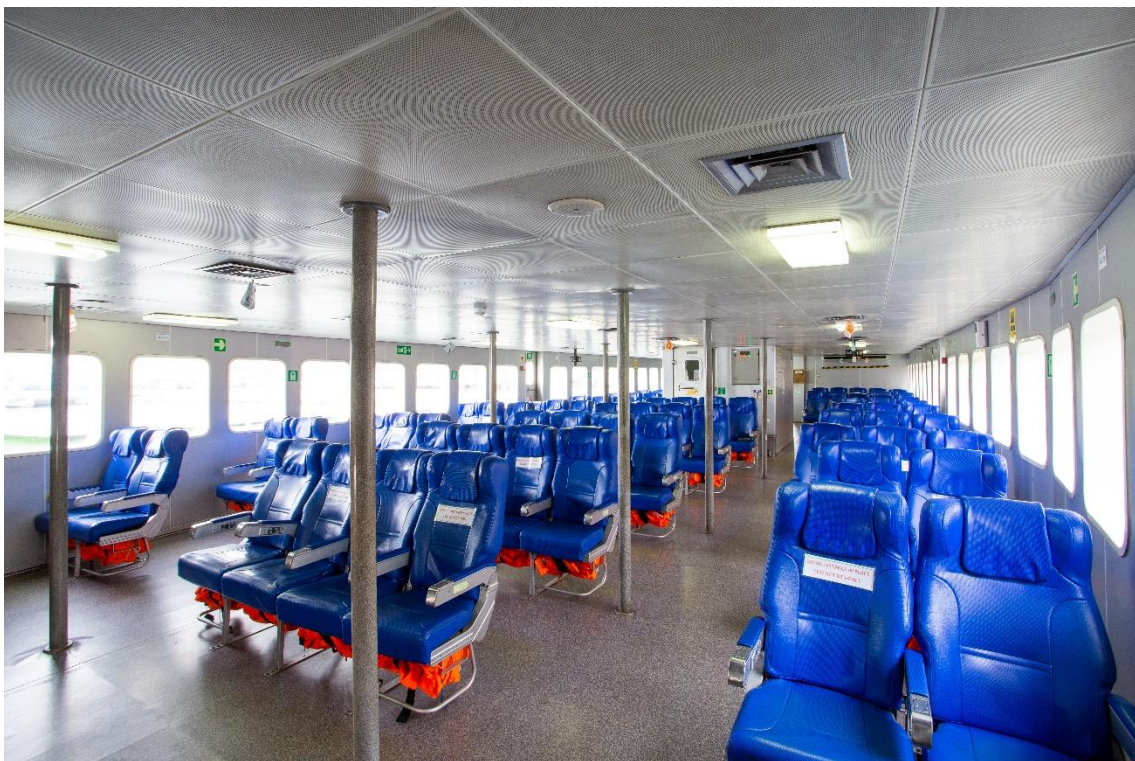


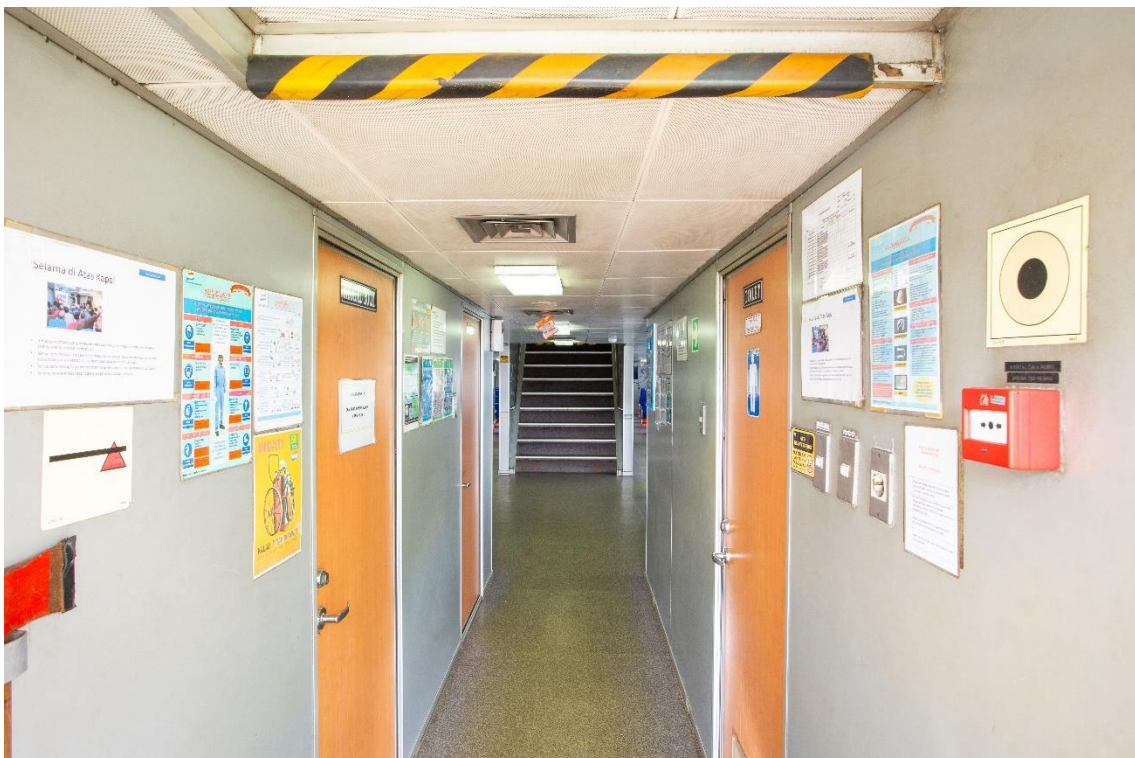






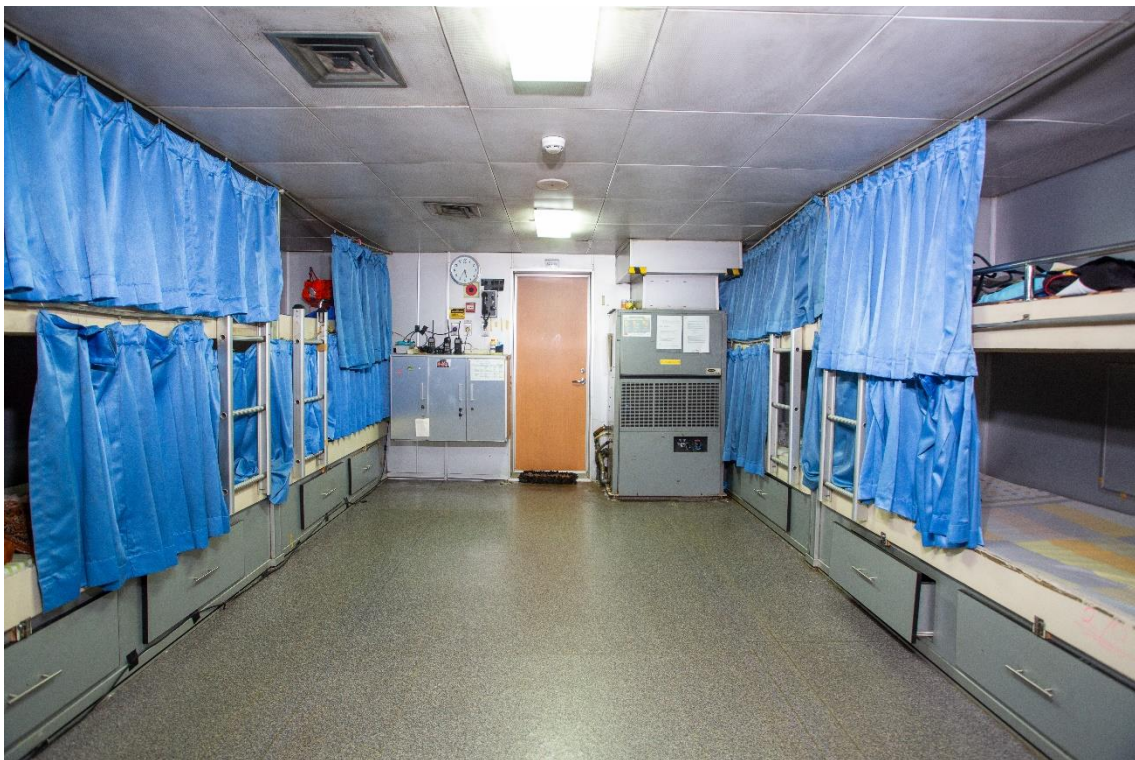


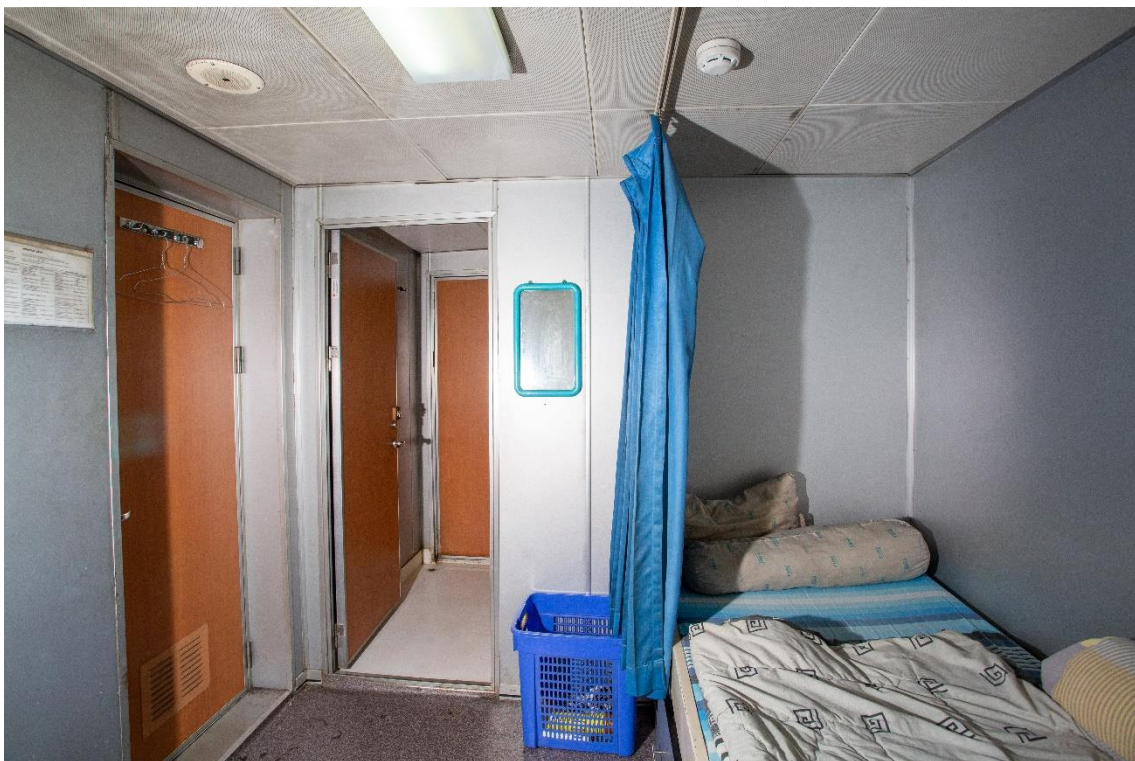












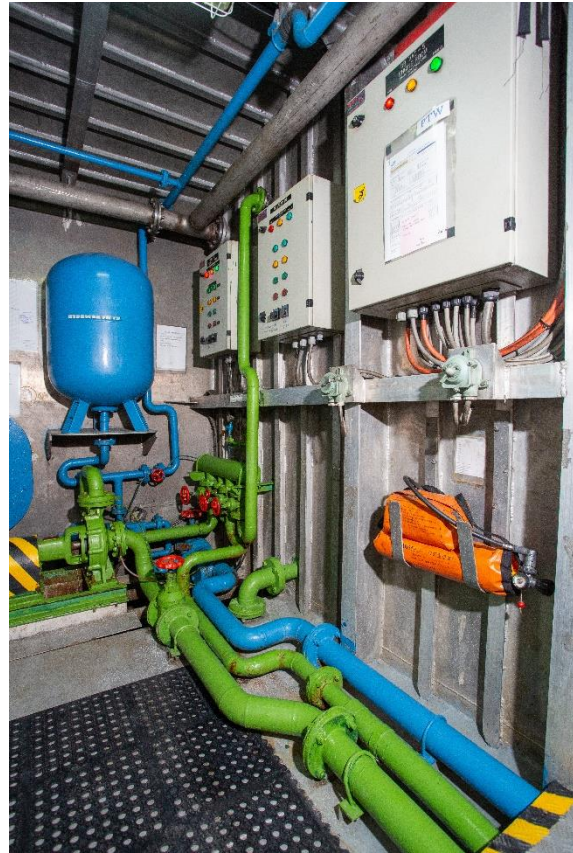
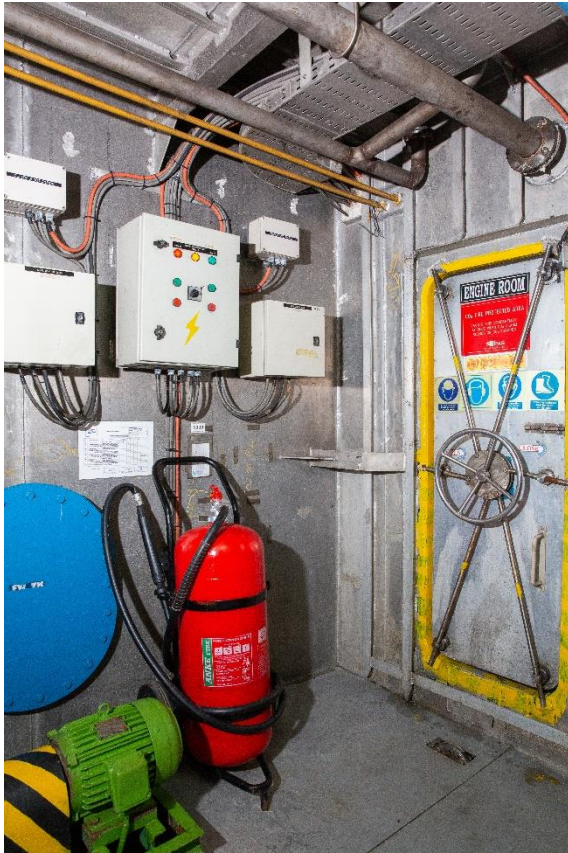








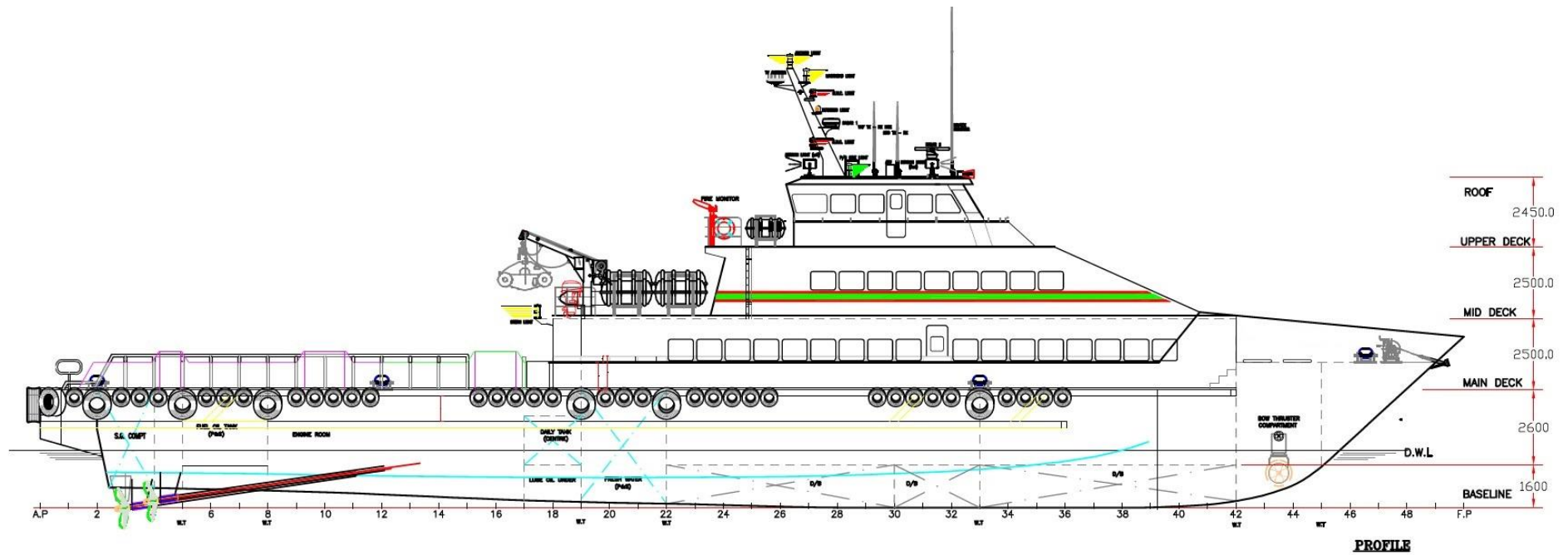


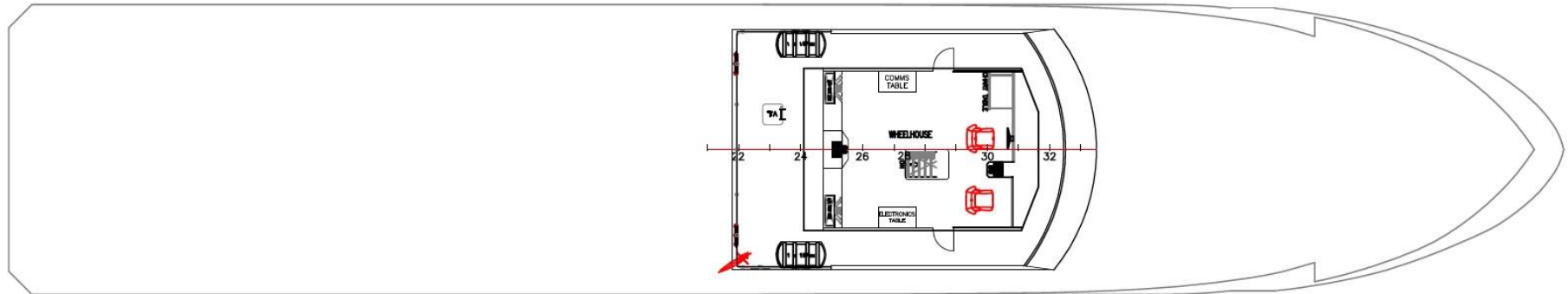




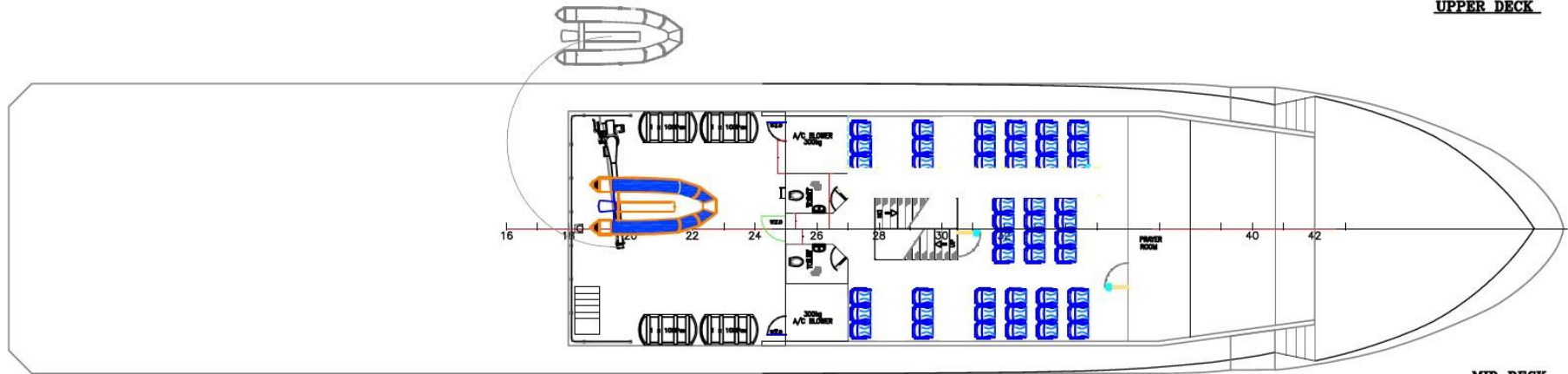






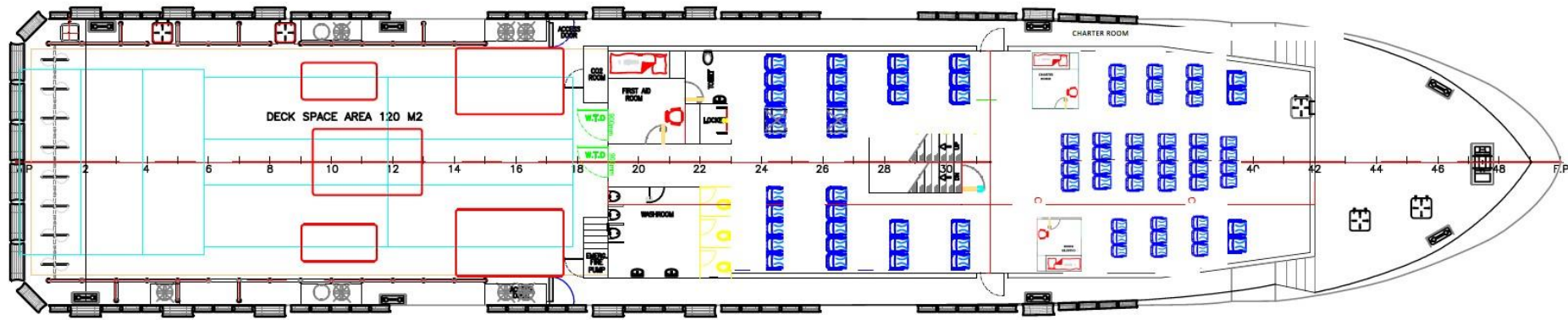


UPPER DECK

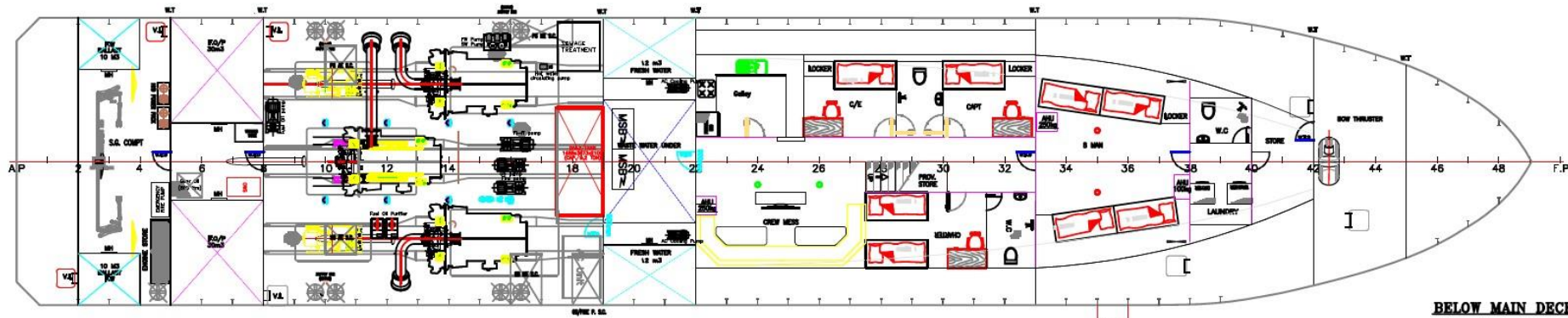


MID DECK

MONOHULL CREWBOAT



MAIN DECK



BELOW MAIN DECK