

DAMEN

FCS 4008 Patrol vessel: DSS Undine

Full specification

FCS 4008

About this vessel type

Damen's FCS range provide safe and comfortable transport based on the improved seakeeping behaviour that comes courtesy of the Axe Bow.

The focus of this FCS 4008 is patrol duties, but thanks to the spacious aft deck it is also capable of carrying deck cargo. It can also handle a range of equipment like cranes, fire-fighting apparatus and rescue craft.

Having served on the seas for decades, the Damen Fast Crew Supply Vessel designs are of proven reliability. The basis for the range is a balance between comfort, speed, operability, efficiency and flexibility.

The FCS creates a fast, reliable connection between port and offshore operations. The Sea Axe hull reduces demands on crew. Propulsion options allow operational requirements to be matched with efficiency.



DAMEN FCS 4008 PATROL VESSEL

Suitable for patrol duties



(photo taken when new)

Built 2017

Dimensions 41.20 x 8.70 x 3.90 m

Draft 3.00 m

Steel hull, aluminium superstructure

Range 2100 nm at maximum speed

Accommodation for 15 crew total
(according to flag regulations)

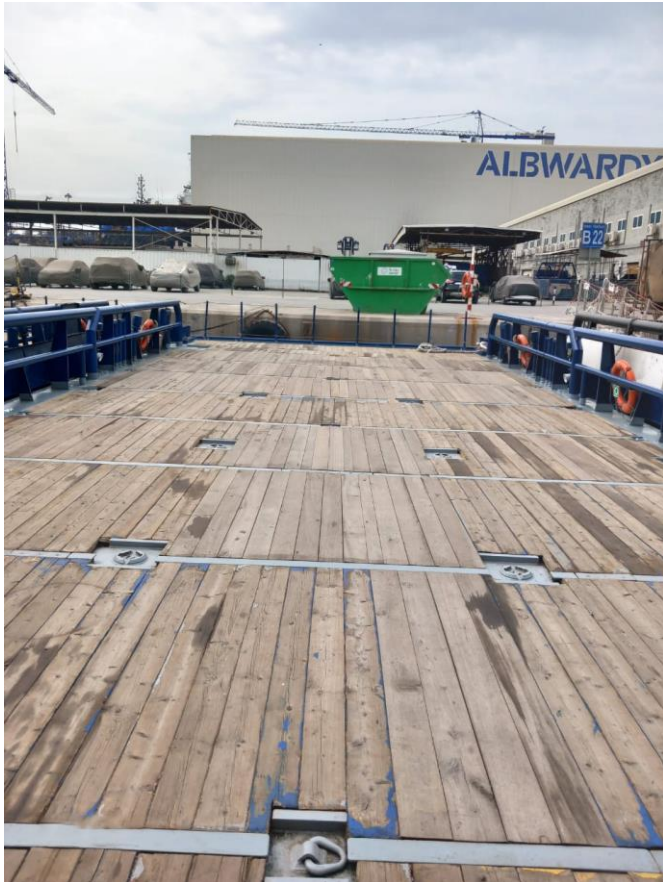
DAMEN FCS 4008 PATROL VESSEL

Bridge deck



DAMEN FCS 4008 PATROL VESSEL

Aft deck



Free deck area 140 m²

Deck strength 2.5 tonnes/m²

DAMEN FCS 4008 PATROL VESSEL

Crane



HEILA HLM 20-S3, fully foldable deck crane.

Capacities:

4660 kgs at 2.79 m

2890 kgs at 4.79 m

1980 kgs at 6.74 m

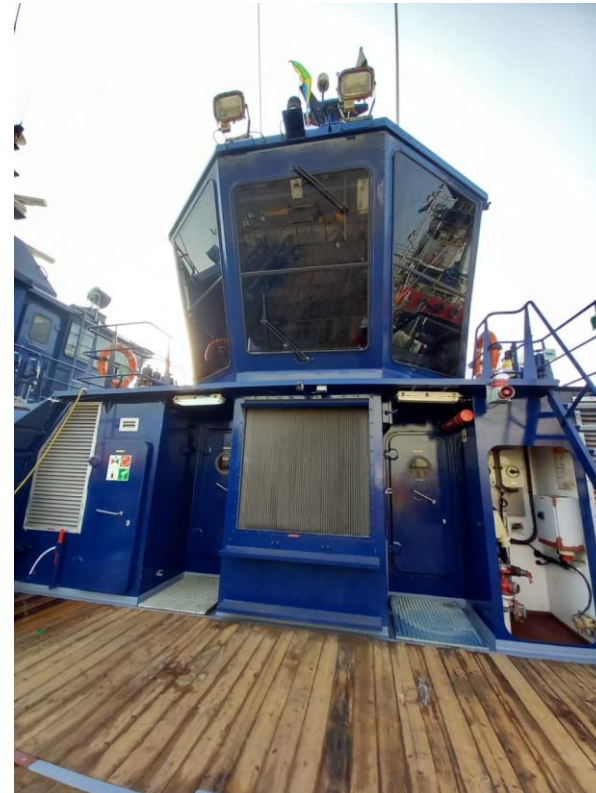
1480 kgs at 8.70 m

1200 kgs at 10.56 m

Completely overhauled mid 2023 including load test.

DAMEN FCS 4008 PATROL VESSEL

Anchor winch and wheelhouse



DAMEN FCS 4008 PATROL VESSEL

Bridge



Navigation and communication according to class regulations.

Bureau Veritas I ✕Hull •MACH Light ship/Fast Patrol Boat Sea Area 4 (Hs unlimited): unrestricted navigation.

GMDSS A2

All windows are provided with sunscreens.

DAMEN FCS 4008 PATROL VESSEL

Heavy duty rubber fenders and tyres



DAMEN FCS 4008 PATROL VESSEL

Accommodation main deck

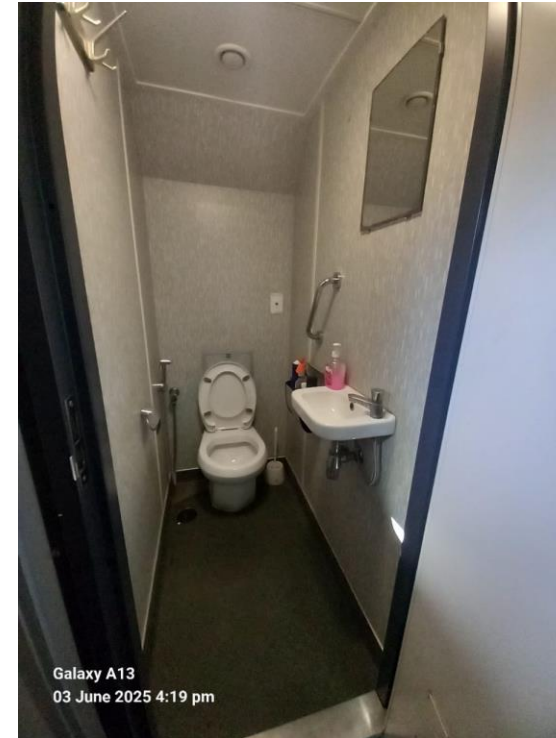


In 2025 the passenger area has been transformed into crew accommodation.

Total cabins on main deck: 3 cabins with 4 berths - 3 cabin with 1 berth

DAMEN FCS 4008 PATROL VESSEL

Accommodation main deck



In 2025 the passenger area has been transformed into crew accommodation.

Multifunctional room - 2 toilets - 2 showers

DAMEN FCS 4008 PATROL VESSEL

Galley below main deck



DAMEN FCS 4008 PATROL VESSEL

Mess-room below main deck



DAMEN FCS 4008 PATROL VESSEL

Crew accommodation below main deck



DAMEN FCS 4008 PATROL VESSEL

Propulsion

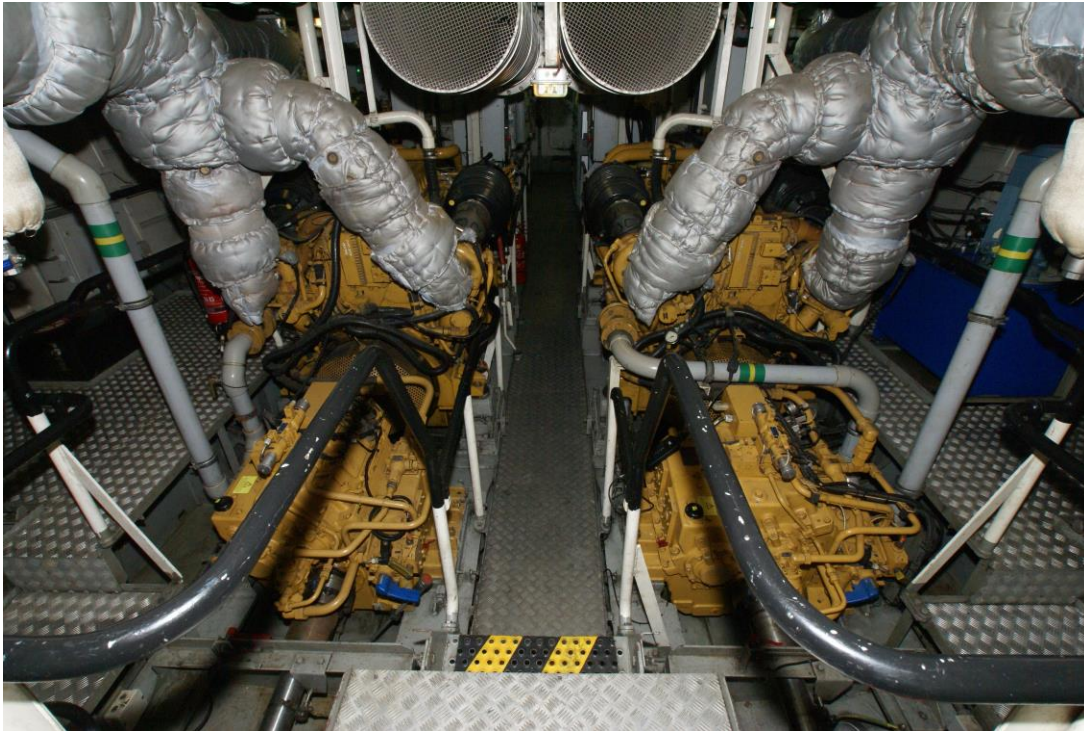


Four fixed pitch propellers.

Bow thruster 120 kW, electrically driven.

DAMEN FCS 4008 PATROL VESSEL

Engine room



4x Caterpillar, type C32 TTA, 5798 hp total
Top-end overhaul mid 2023.

Speed \pm 26 knots

4x Reintjes, type WVS 730/1 L

Engine room ventilation:
2x 15.500 m³/hr each

DAMEN FCS 4008 PATROL VESSEL

Main engines



DAMEN FCS 4008 PATROL VESSEL

Generators



2x Caterpillar C 4.4, each 99.0 ekW – 123.0 kVA

Complete major overhaul mid 2023.

DAMEN FCS 4008 PATROL VESSEL

Tank capacities

Tanks					
Number	Content	Indication on tank	Net volume (m3)	Specific weight (ton/m3)	Net weight (ton)
1	Fore peak below top deck- void	1 VOID	1.99	1	1.987
2	Fore peak - void	2 VOID	4.51	1	4.508
3	Void	3 LC	20.95	1	20.948
5	Sewage tank CL	5 SE	1.89	1	1.894
6	Fresh water tank CL	6 FW	13.38	1	13.377
7	Fuel oil tank SB	7 FO	30.92	0.84	25.970
8	Fuel oil tank PS	8 FO	30.92	0.84	25.970
9	Fuel oil day tank SB	9 FO	2.65	0.84	2.223
10	Fuel oil day tank PS	10 FO	2.65	0.84	2.223
11	Bilge water tank	11 BW	1.02	1	1.023
12	Dirty oil tank	12 DO	1.02	0.9	0.921
13	Void	13 F/D	3.01	1	3.012
14	Void	14 F/D	3.01	1	3.012
15	Fuel oil tank SB	15 FO	25.80	1	25.800
16	Fuel oil tank PS	16 FO	25.80	1	25.800
17	Void	17 VOID	1.86	1	1.860

DAMEN FCS 4008 PATROL VESSEL

Fuel and water separator



DAMEN FCS 4008 PATROL VESSEL

Air-conditioning



Air-conditioning compressor unit installed.

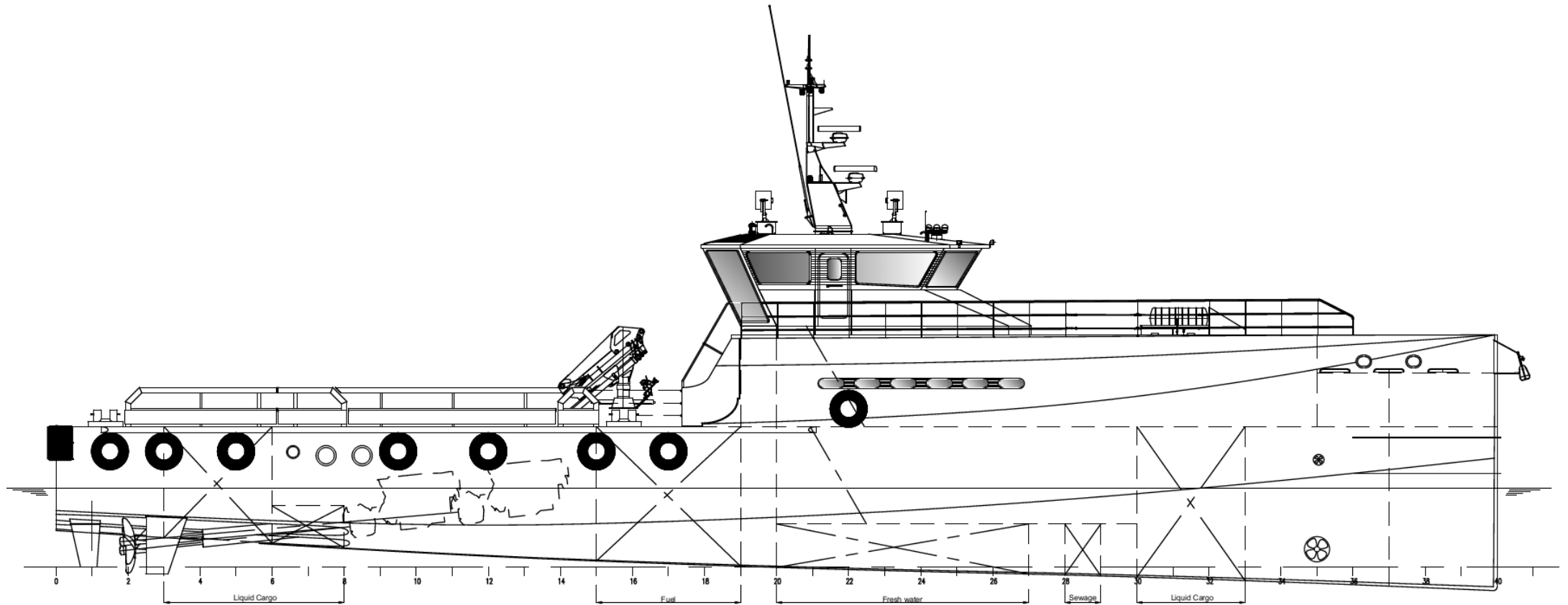
DAMEN FCS 4008 PATROL VESSEL

Electrical switch boards



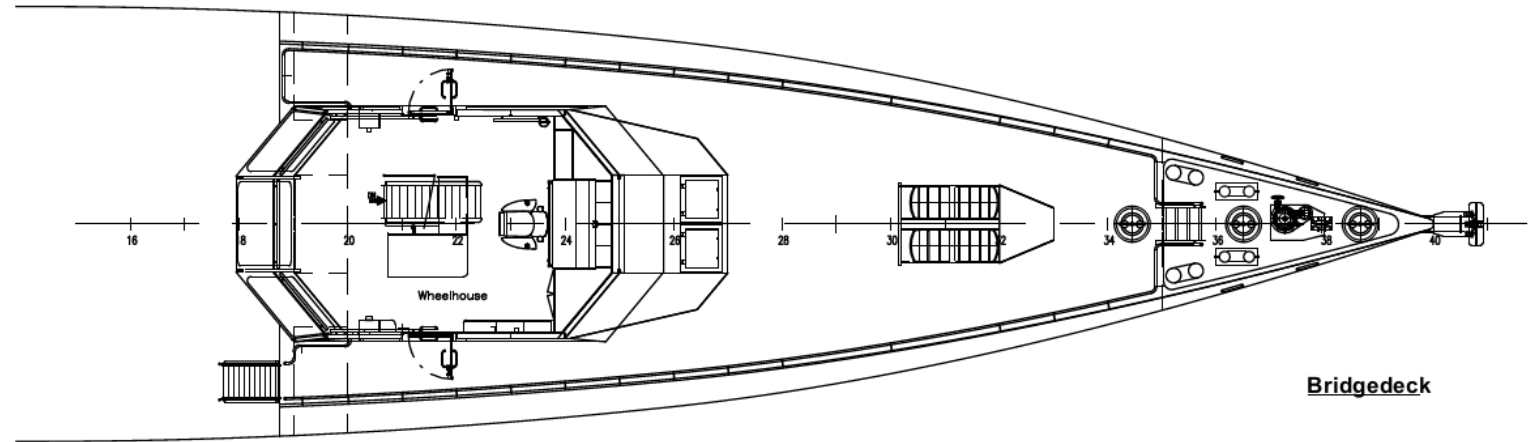
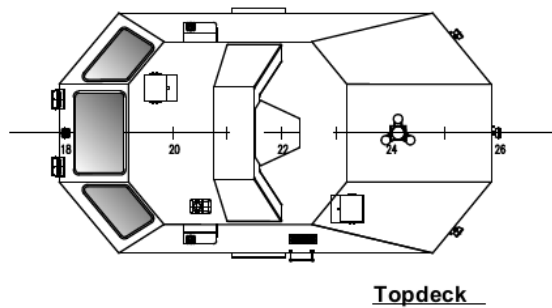
DAMEN FCS 4008 PATROL VESSEL

Profile



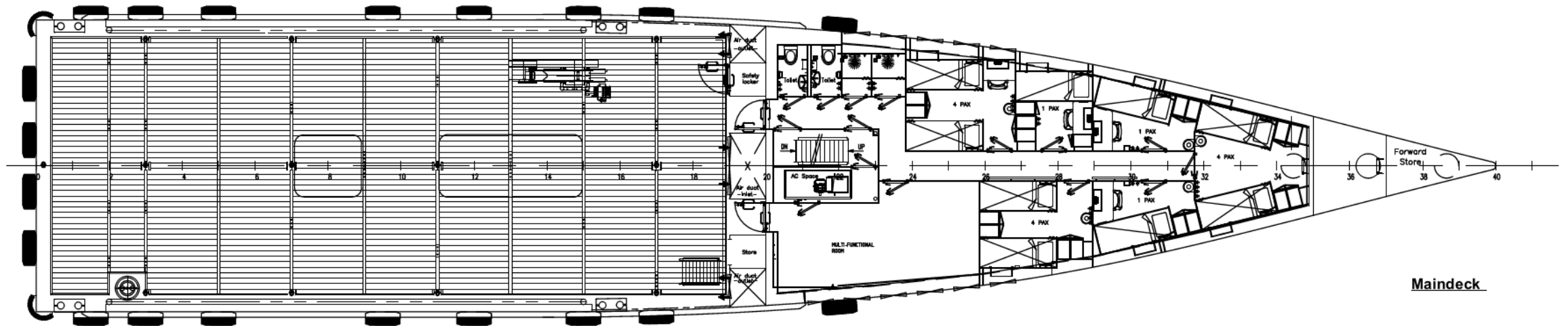
DAMEN FCS 4008 PATROL VESSEL

Bridge deck and top deck



DAMEN FCS 4008 PATROL VESSEL

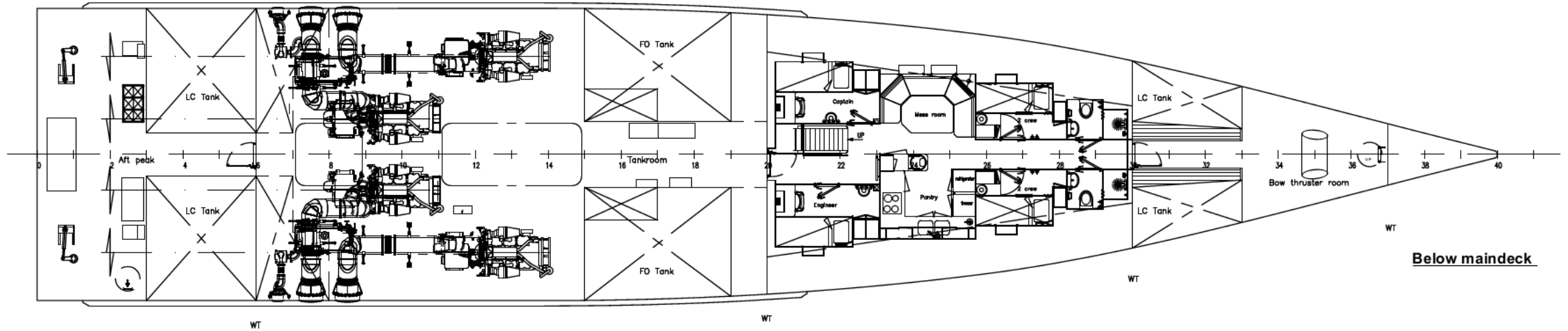
Main deck



Maindeck

DAMEN FCS 4008 PATROL VESSEL

Below main deck



DAMEN FCS 4008 PATROL VESSEL

Special features

»» Linking sea and shore

The FCS creates a fast, reliable connection between port and offshore operations. The Sea Axe hull reduces demands on crew. Propulsion options allow operational requirements to be matched with efficiency.

»» We never compromise on safety

Damen never compromises on safety. Our Fast Crew Suppliers embody the highest safety standards. And although designed for speed and efficiency, they still have excellent seakeeping abilities thanks to our Sea Axe hull design.

»» Excellent visibility

The FCS has excellent visibility from the wheelhouse.

»» Spacious deck, spacious accommodation

Large, flush and uncluttered decks are a major highlight of the FCS. And we have provided an optimised layout, featuring well-located operational compartments and spacious accommodation.



DAMEN TRADING

Our team



Michel Radjiman
Senior Sales Manager



Michiel Dijkhoorn
Sales Manager



Bert Holster
Sales Manager





DAMEN