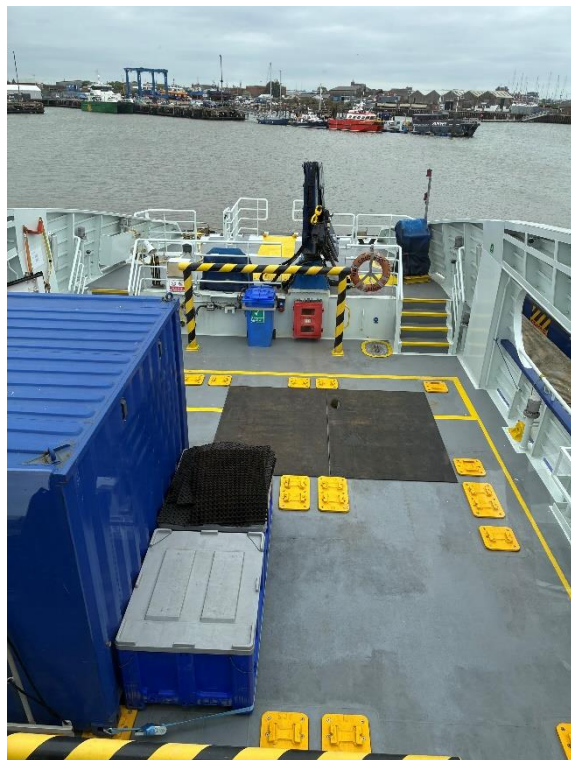
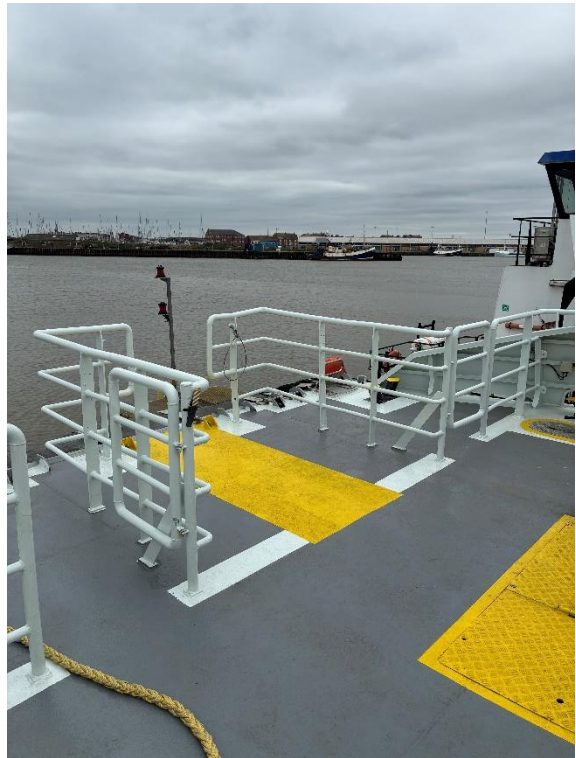
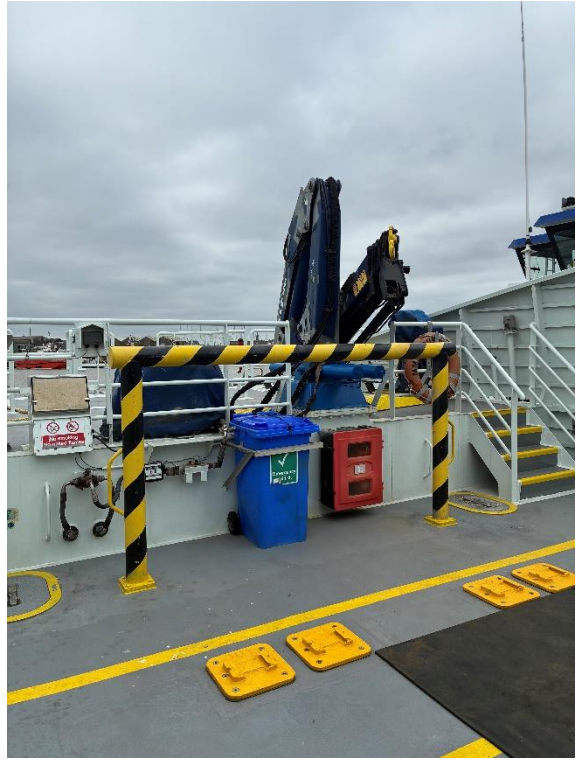


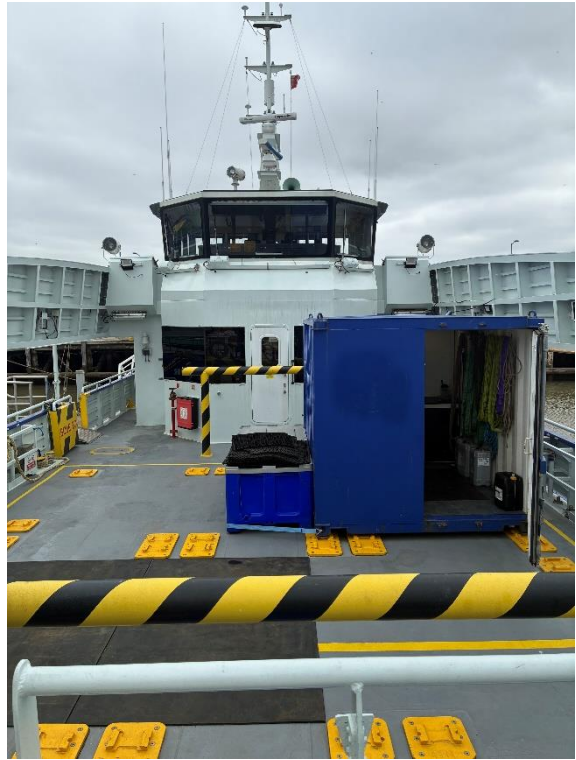
*This multipurpose aluminium catamaran is built to support the offshore renewable energy sector during the initial installation, operation and maintenance phases.*

Type	Multipurpose crew transfer vessel
Built	2015, UK
Dimensions	25.00 / 23.95 x 7.97 x 3.44 m
Loaded draft	1.985 m
Height	Keel to mast 12.50 m
Material	Aluminium both hull and superstructure
Tonnage	GRT/NRT 89.68
Propulsion	2x fixed pitch propellers
Main engines	2x Caterpillar, type C32
Output	2600 hp total
Service speed	23 knots
Bow thrusters	2x 40 hp
Generators	2x Caterpillar 22,5 kW
Forward deck	80 m <sup>2</sup>
Container capacity	4x 10 ft / 2x 20 ft
Cargo load	16 tonnes
Pad loading	3 tonnes/m <sup>2</sup>
Deck equipment	Fuel transfer system 4x 10 ft or 2x 20 ft container mounts Crane cap.: 5.100 kgs at 2.50 m, 1.180 kgs at 10.16 m Multiple lashing points
Tank capacities	Fuel oil 16.200 ltrs Fresh water 800 ltrs Waste 1.000 ltrs
Passenger capacity	12 passengers, 4 crew
Accommodation	2x double berth crew cabin, toilet and shower.
Nav./comm. equipment	According to class regulations.
Class	DNV ✕ 1A1 HSLC Windfarm Service(1) R1
Remark	In starboard hull is a general engineering workshop for carrying out maintenance while offshore.

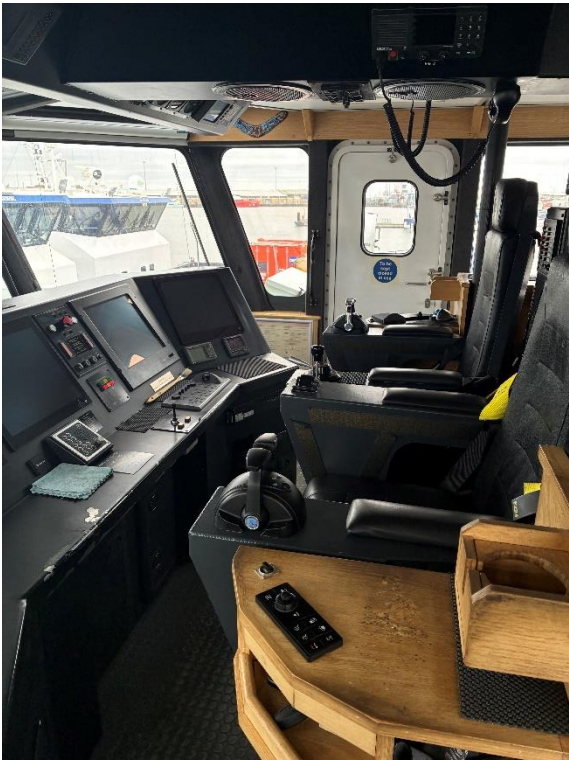
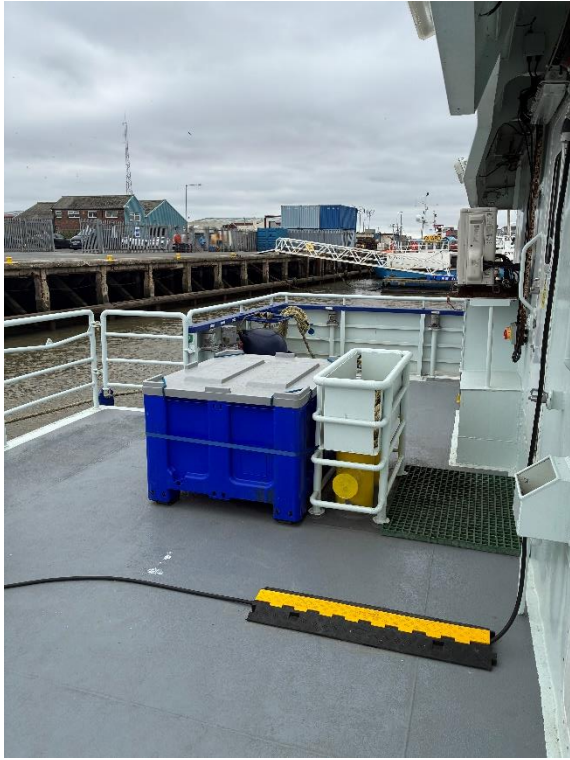




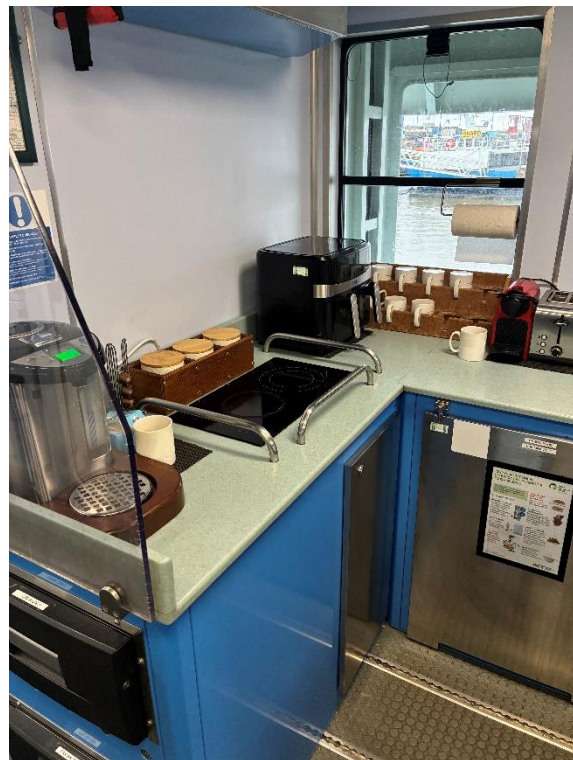


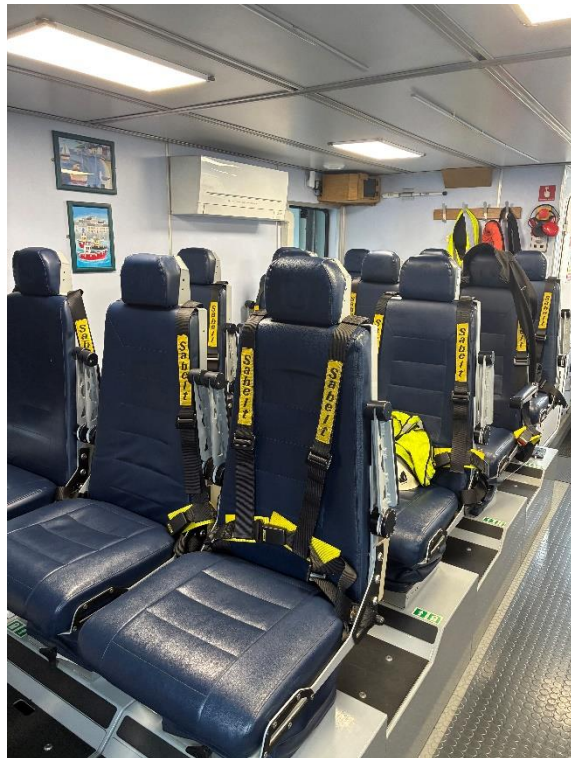
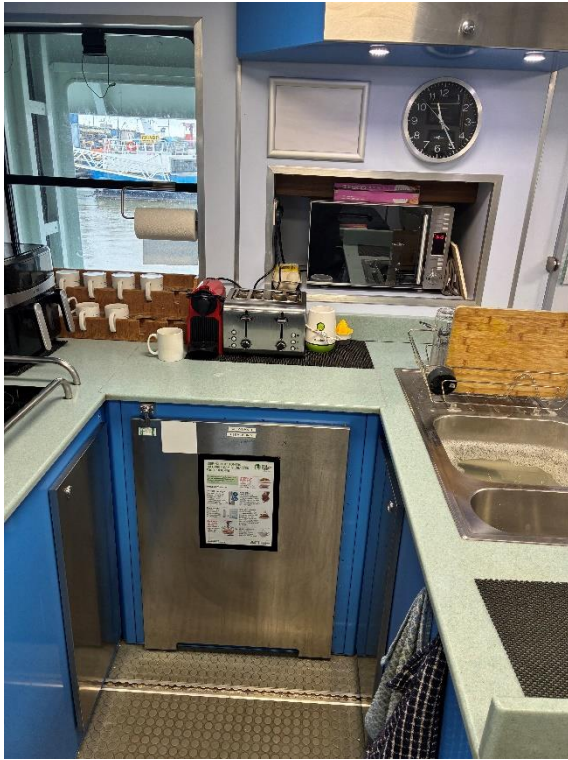


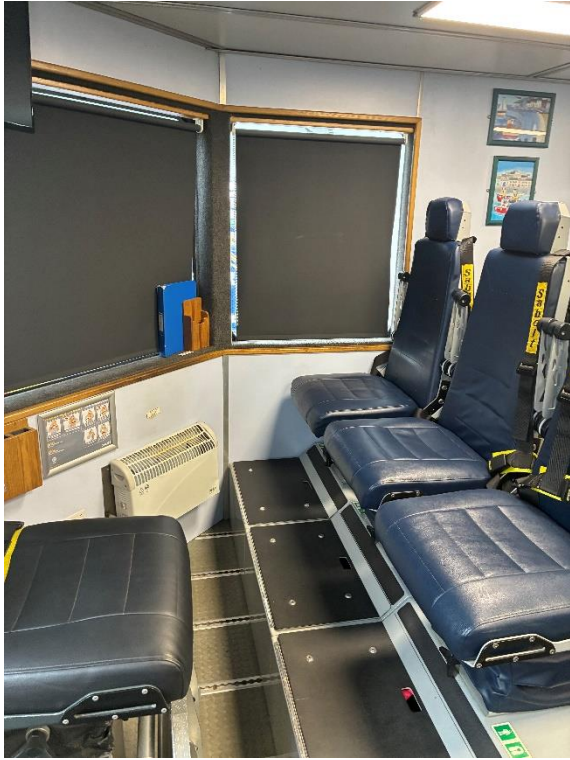
CREW TRANSFER VESSEL

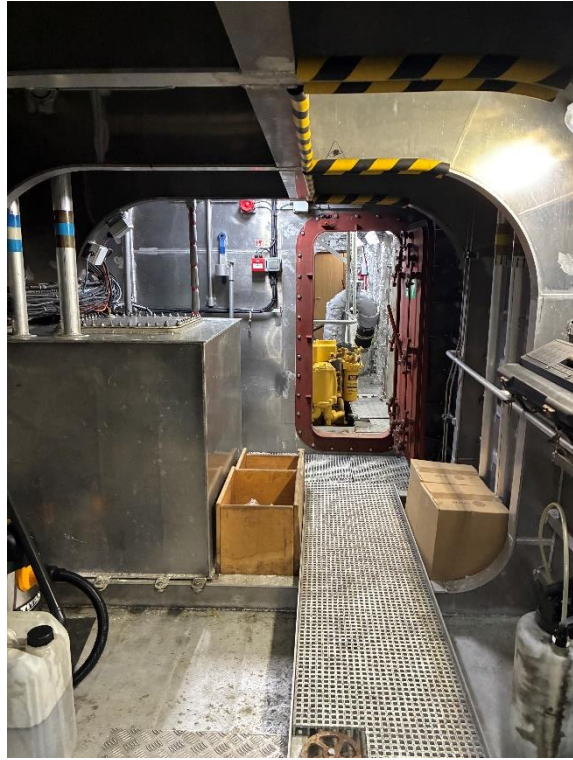




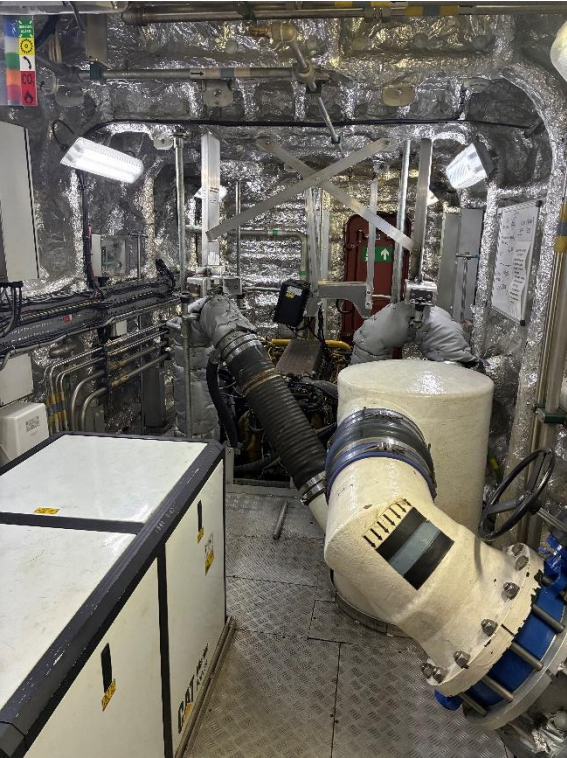




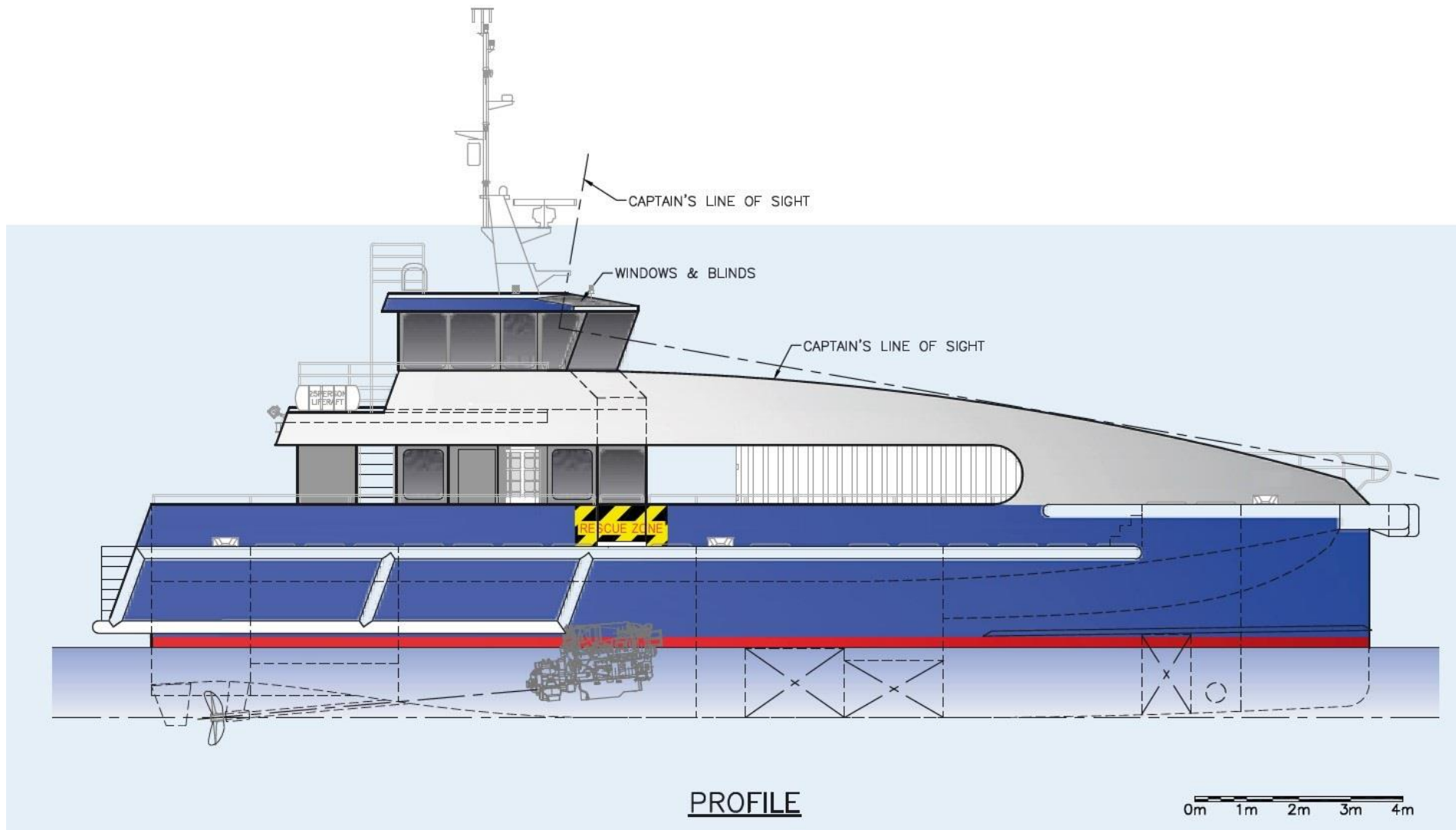


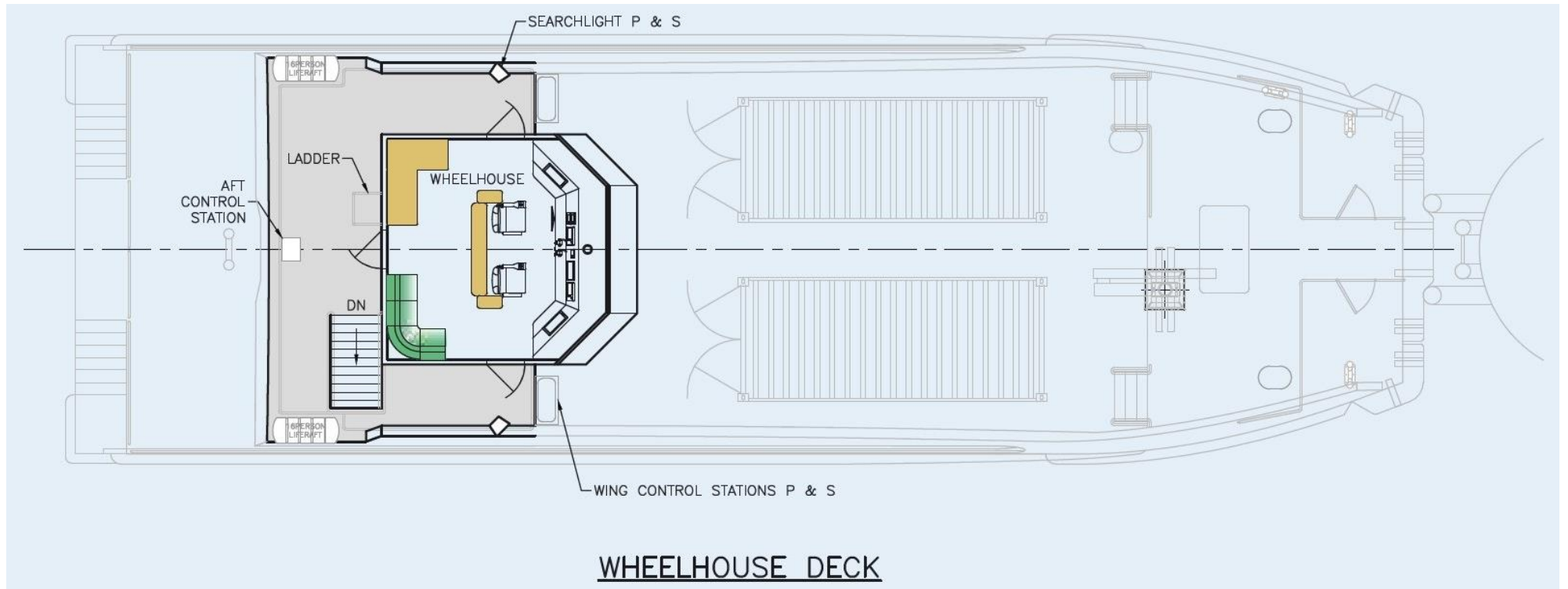


CREW TRANSFER VESSEL

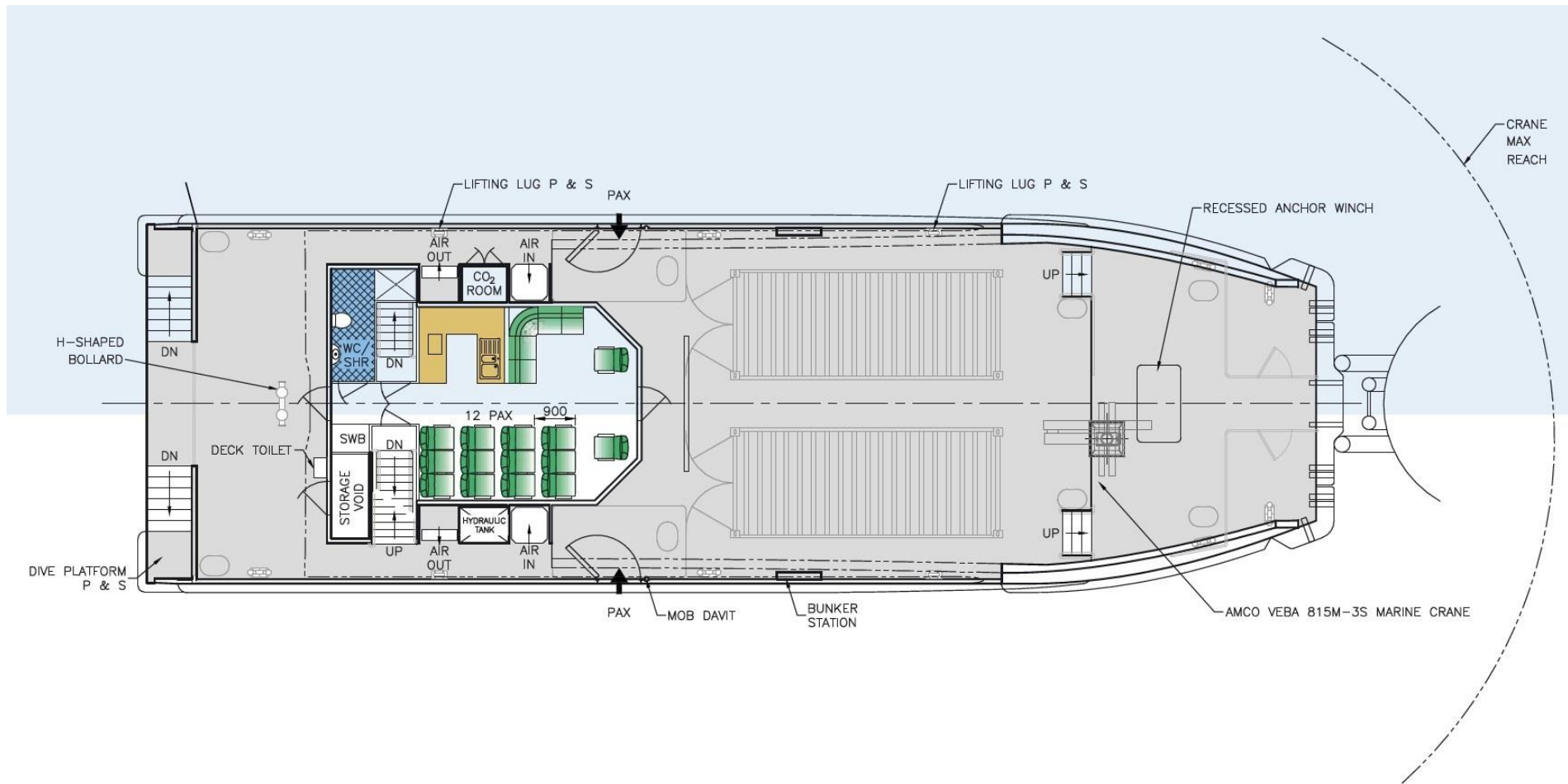


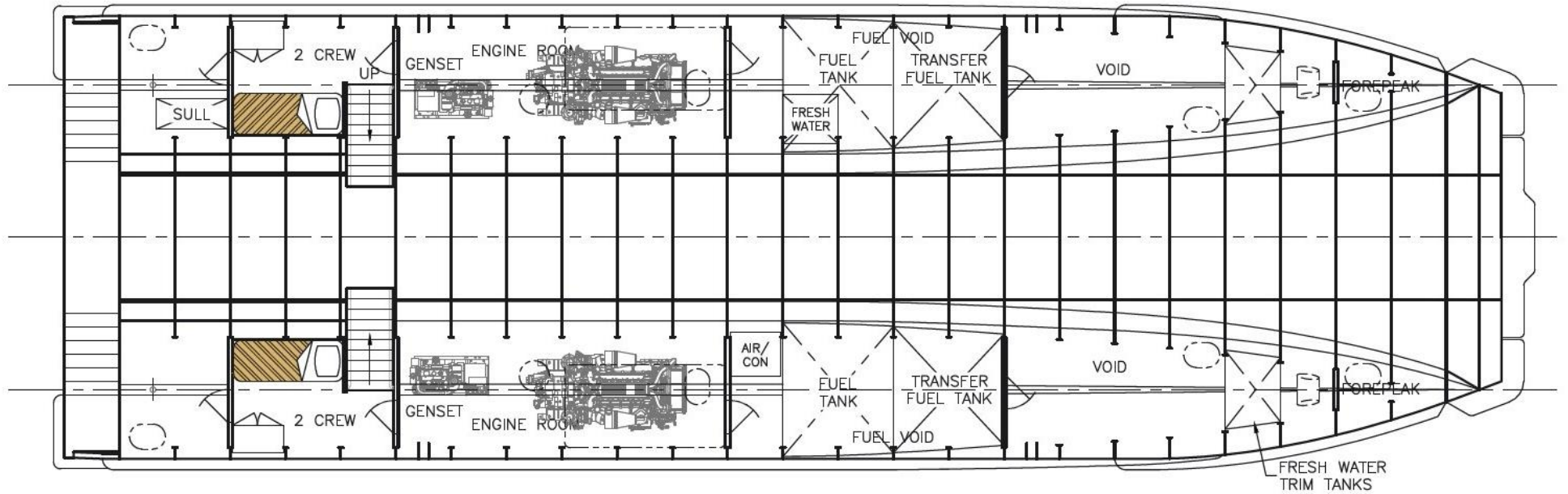






CREW TRANSFER VESSEL





HULL PLAN