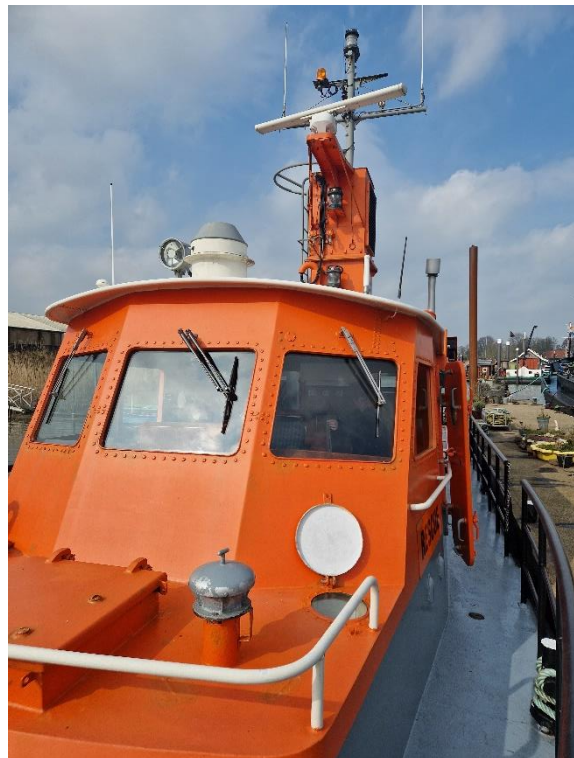


This steel boat is in excellent condition and suitable as patrol, survey and crewboat.

Type	Patrol – survey - crewboat
Built	1979, Germany
Dimensions	18.90 x 4.47 mtrs
Draft	1.20 mtrs
Airdraft	± 9 mtrs
Hull material	Steel
Tonnage	GRT 35.64 / NRT 8.80
Propulsion	Single screw
Main engine	MWM, type V-12
Output	575 hp
Speed	± 12 knots
Gearboxes	Reintjes, type WAV4
Generator	MWM 15 kVA
Fifi monitors	2x 5000 ltrs/min. each
Passenger capacity	6
Fuel capacity	± 3000 ltrs
Equipment	Simrad EQ44 echosounder / depth sounder /Fishfinder Simrad CX44 NavStation Simrad 17" screen Simrad GMDSS Simrad RS82 marifoon Simrad AP50 automatic pilot Sailor RT2048 VHF Simrad rudder indicator Simrad GN33 chart plotter Orlaco camera system AIS Simrad radar Daylight radar Compass Searchlight
Class	No class
Remark	In excellent condition.



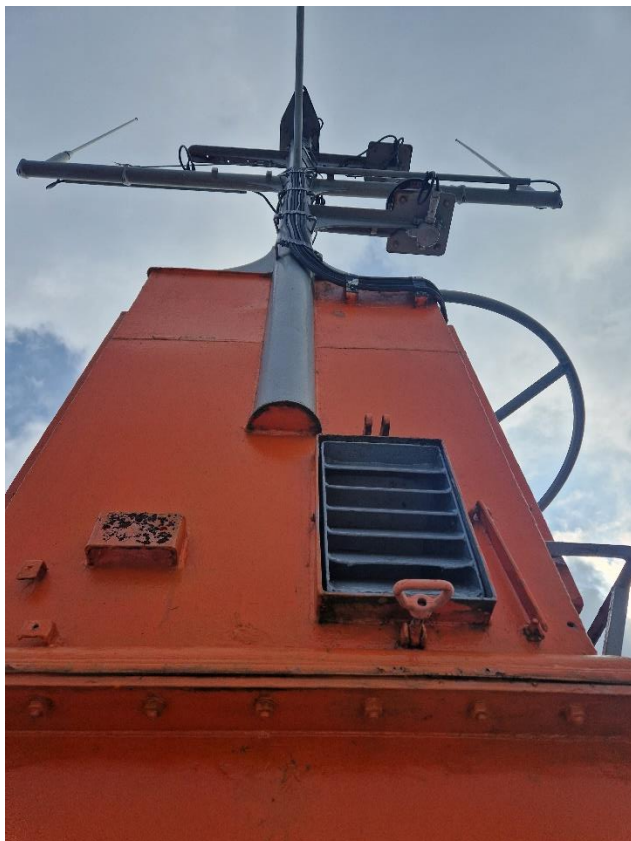










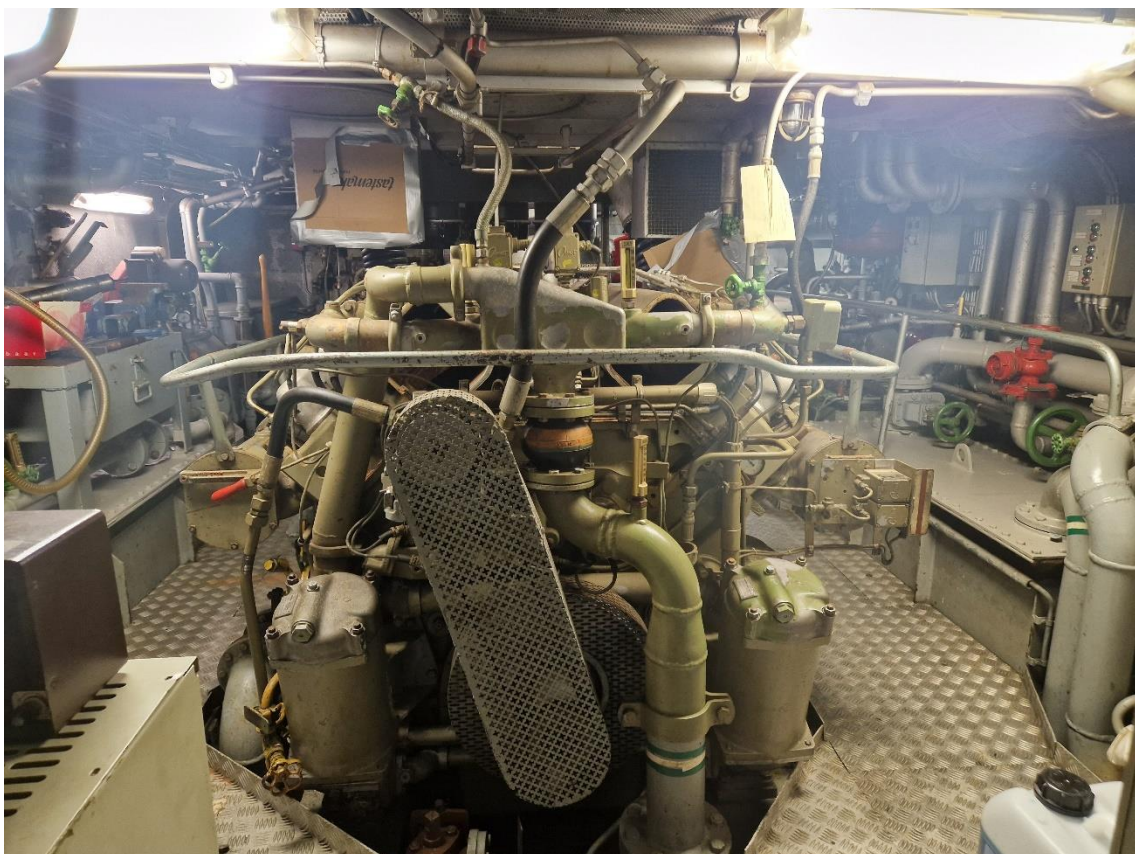


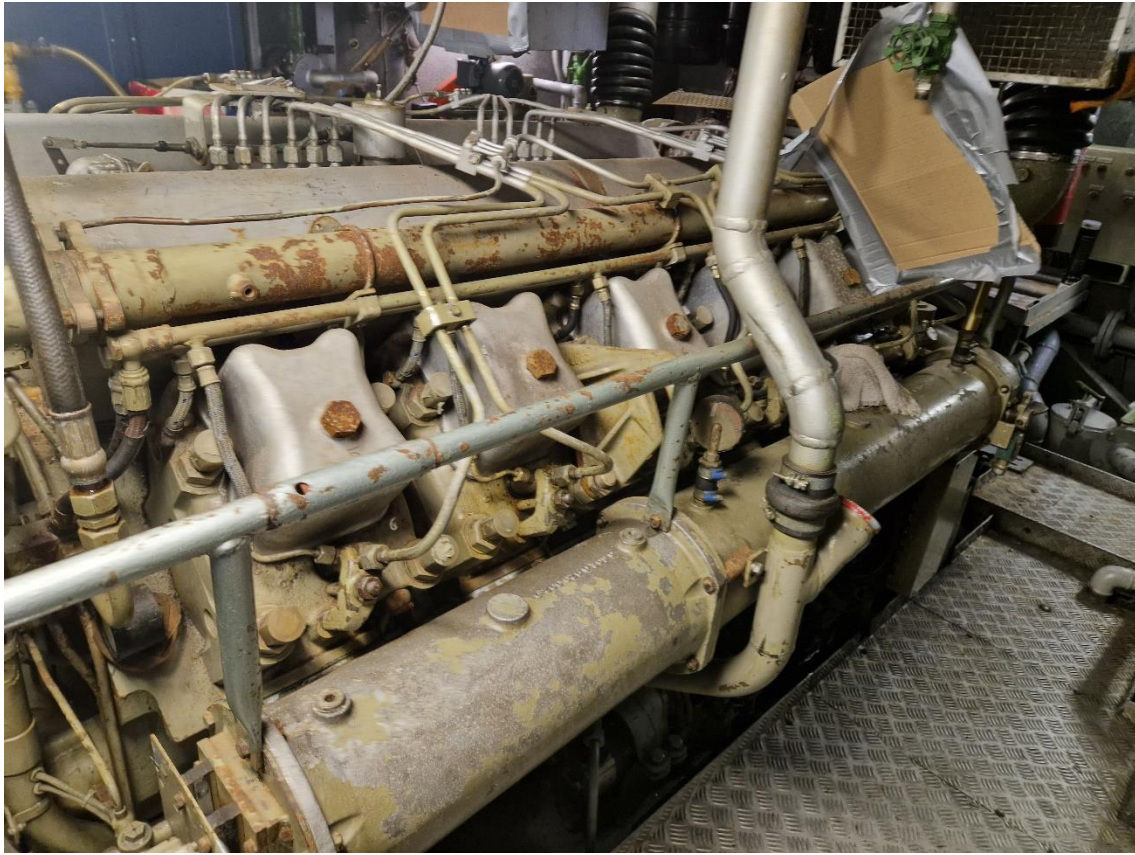




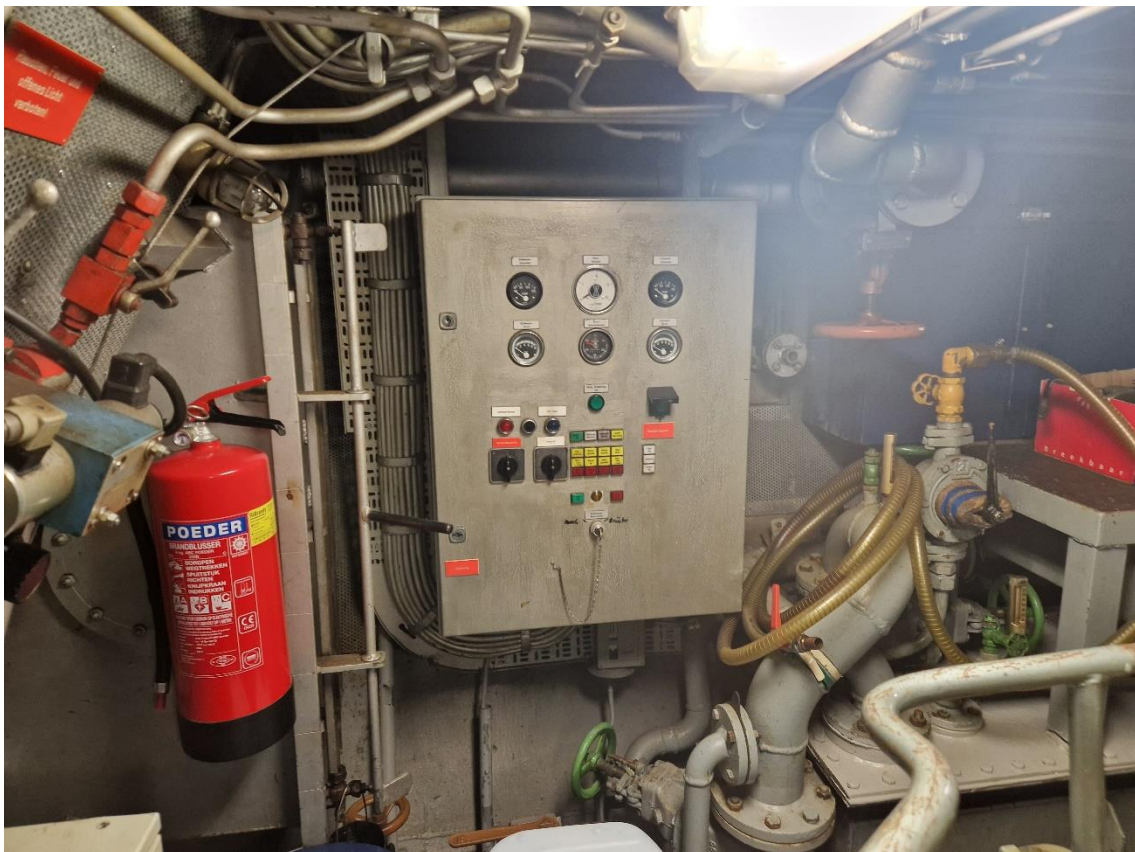


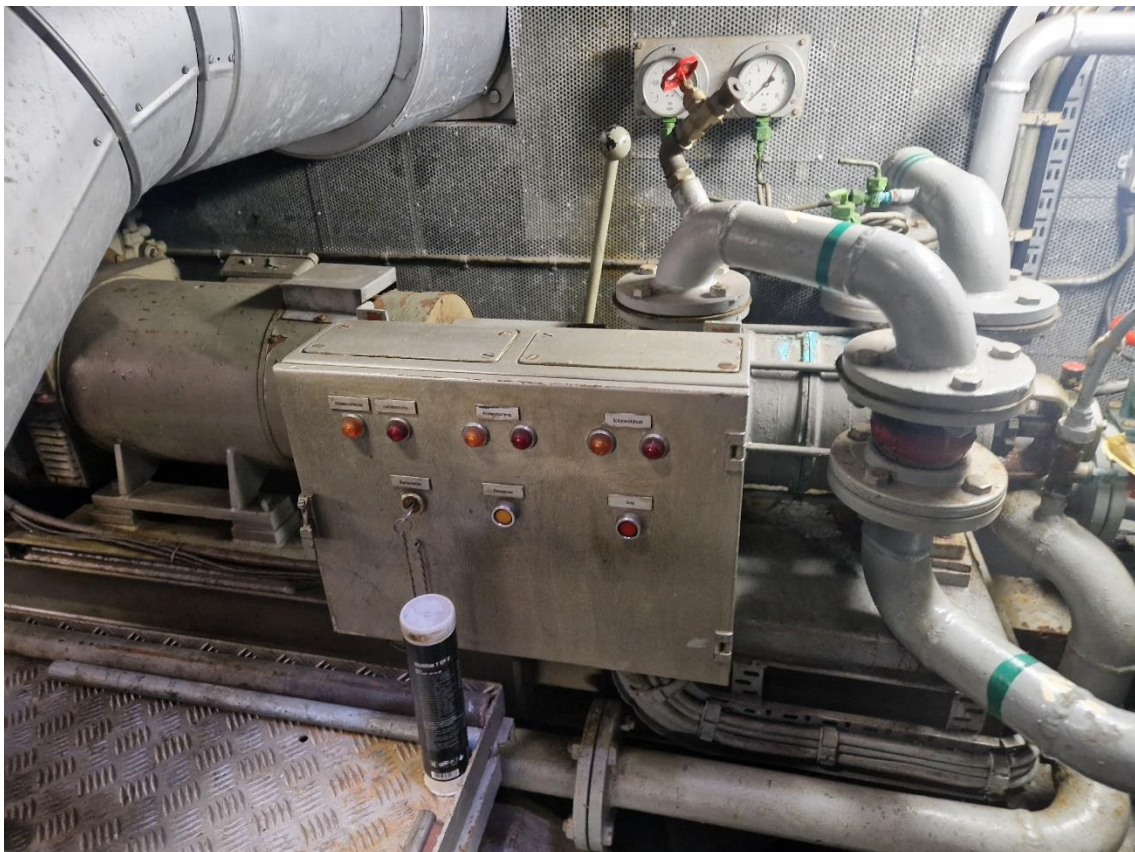
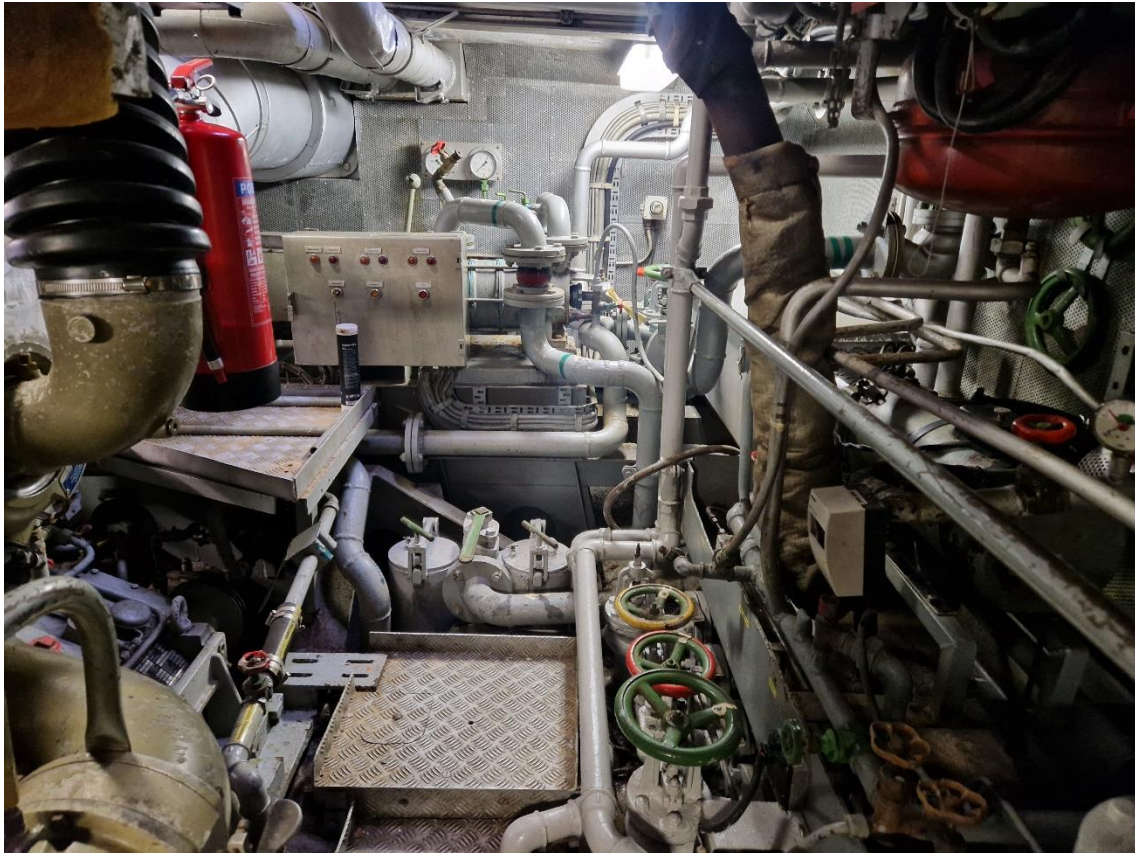


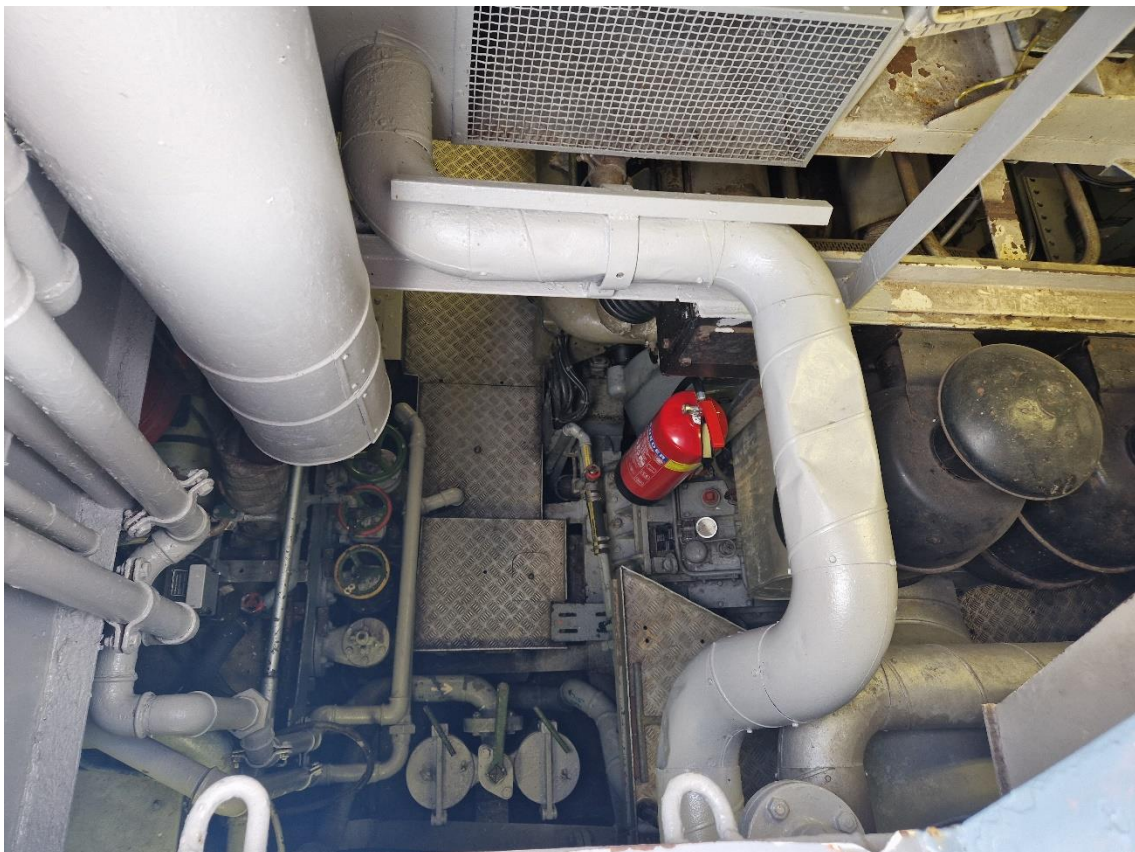




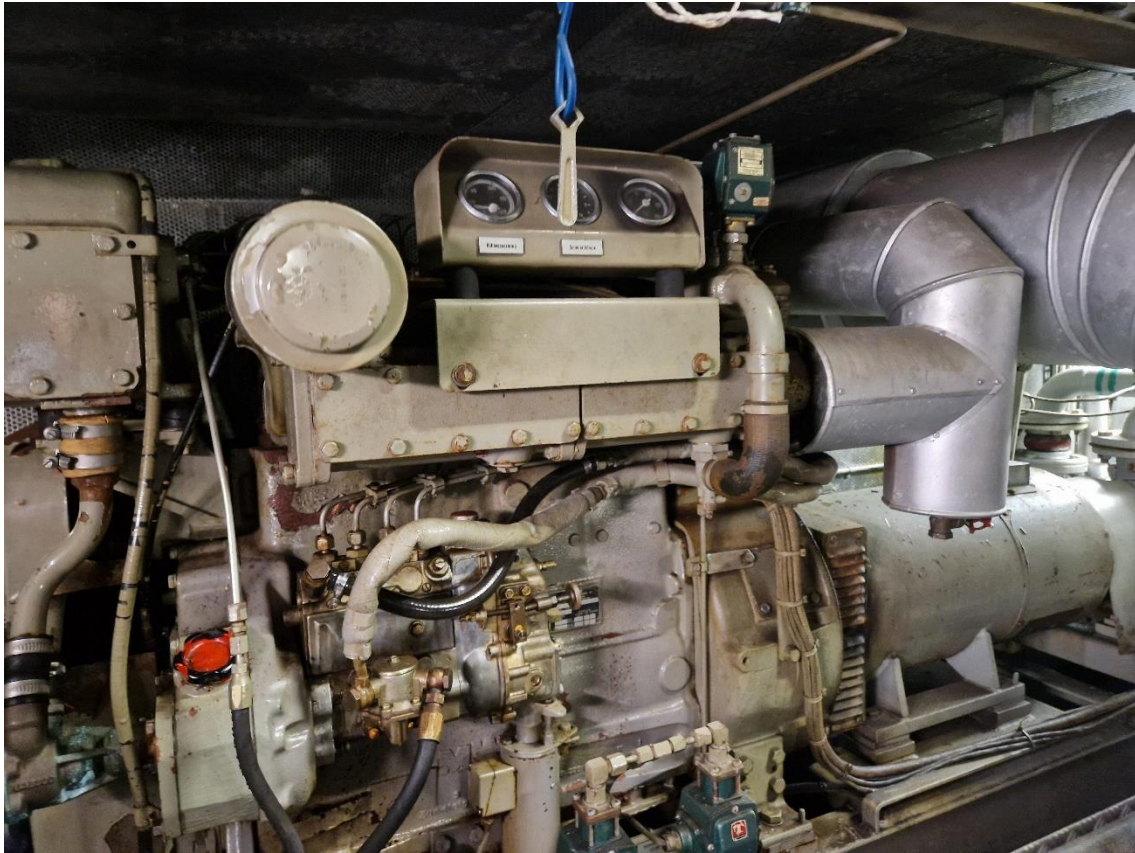


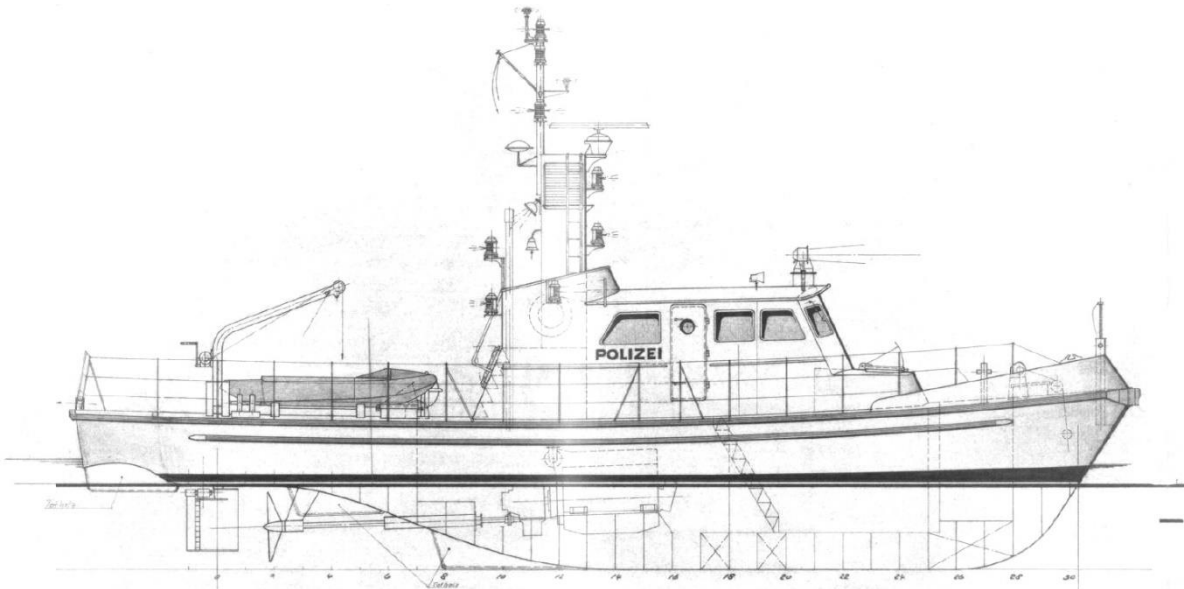












PATROL - SURVEY - CREWBOAT

